



# EJScreen Community Report

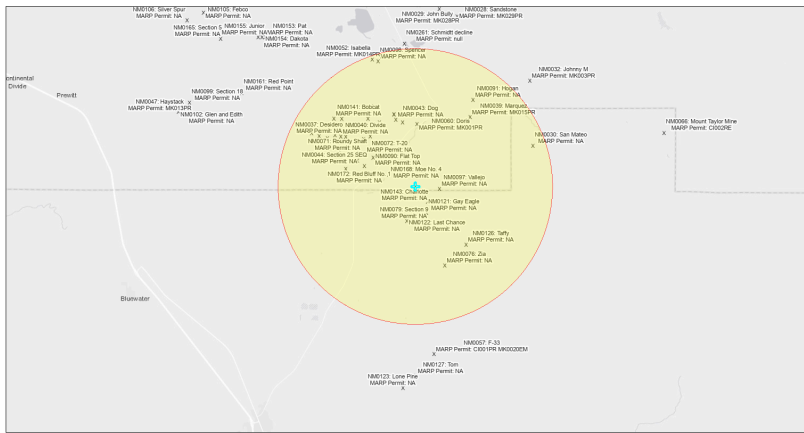
This report provides environmental and socioeconomic information for user-defined areas, and combines that data into environmental justice and supplemental indexes.

## Charlotte NM0143

5 miles Ring Centered at 35.306786,-107.795951

Population: 35

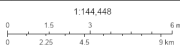
Area in square miles: 78.53



September 24, 2024

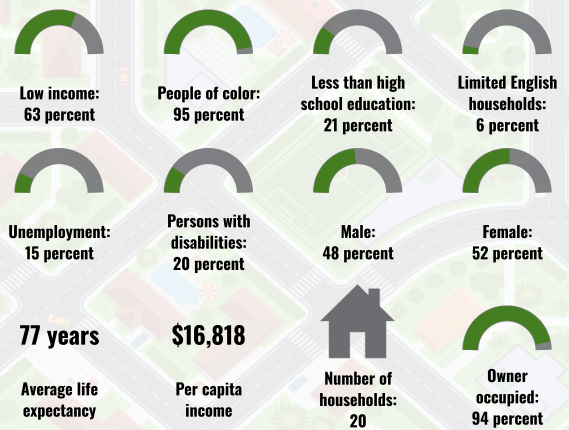
Charlotte NM0143

\* Abandoned Uranium Mines

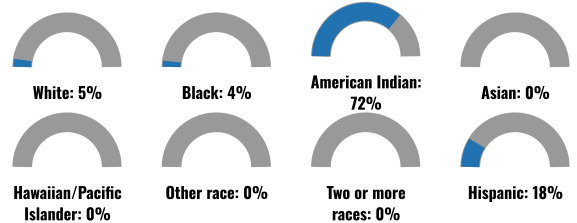


Bureau of Land Management, EPA, HERR, Geomix, USGS, BIA, IHS, New Mexico Energy, Storage and Natural Resources Department, EIS, HERR, IHS

### COMMUNITY INFORMATION



### BREAKDOWN BY RACE



### BREAKDOWN BY AGE



### LIMITED ENGLISH SPEAKING BREAKDOWN



Notes: Numbers may not sum to totals due to rounding. Hispanic population can be of any race. Source: U.S. Census Bureau American Community Survey (ACS) 2018-2022. Life expectancy data comes from the Centers for Disease Control.

### LANGUAGES SPOKEN AT HOME

LANGUAGE	PERCENT
No language data available.	

Report for 5 miles Ring Centered at 35.306786,-107.795951

Report produced September 24, 2024 using EJScreen Version 2.3

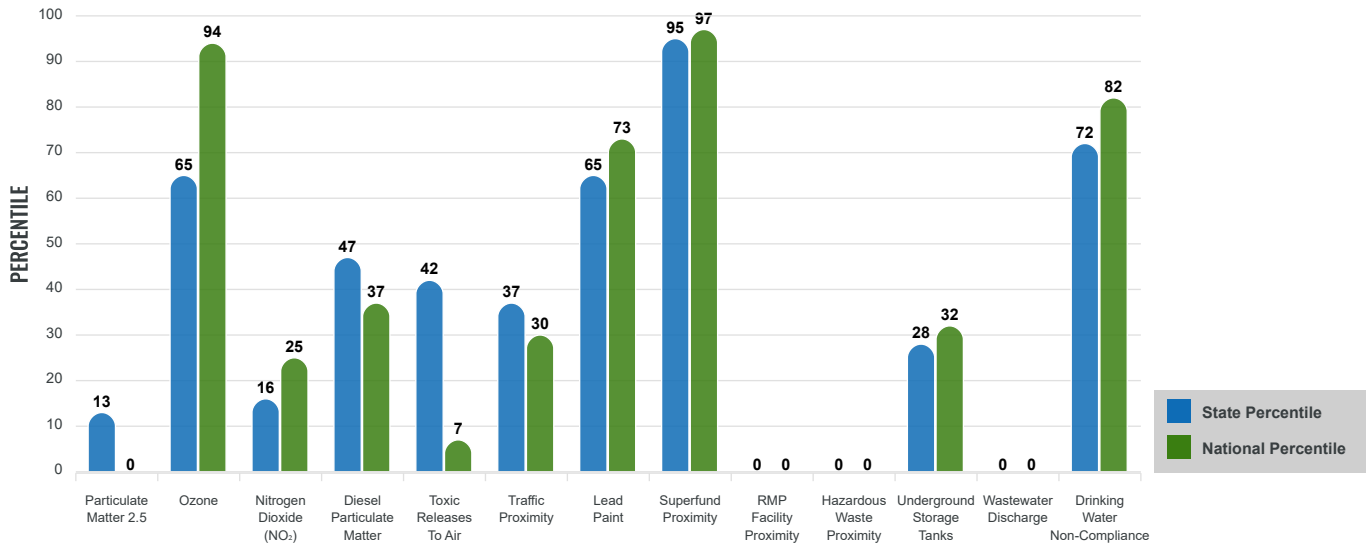
# Environmental Justice & Supplemental Indexes

The environmental justice and supplemental indexes are a combination of environmental and socioeconomic information. There are thirteen EJ indexes and supplemental indexes in EJScreen reflecting the 13 environmental indicators. The indexes for a selected area are compared to those for all other locations in the state or nation. For more information and calculation details on the EJ and supplemental indexes, please visit the [EJScreen website](#).

## EJ INDEXES

The EJ indexes help users screen for potential EJ concerns. To do this, the EJ index combines data on low income and people of color populations with a single environmental indicator.

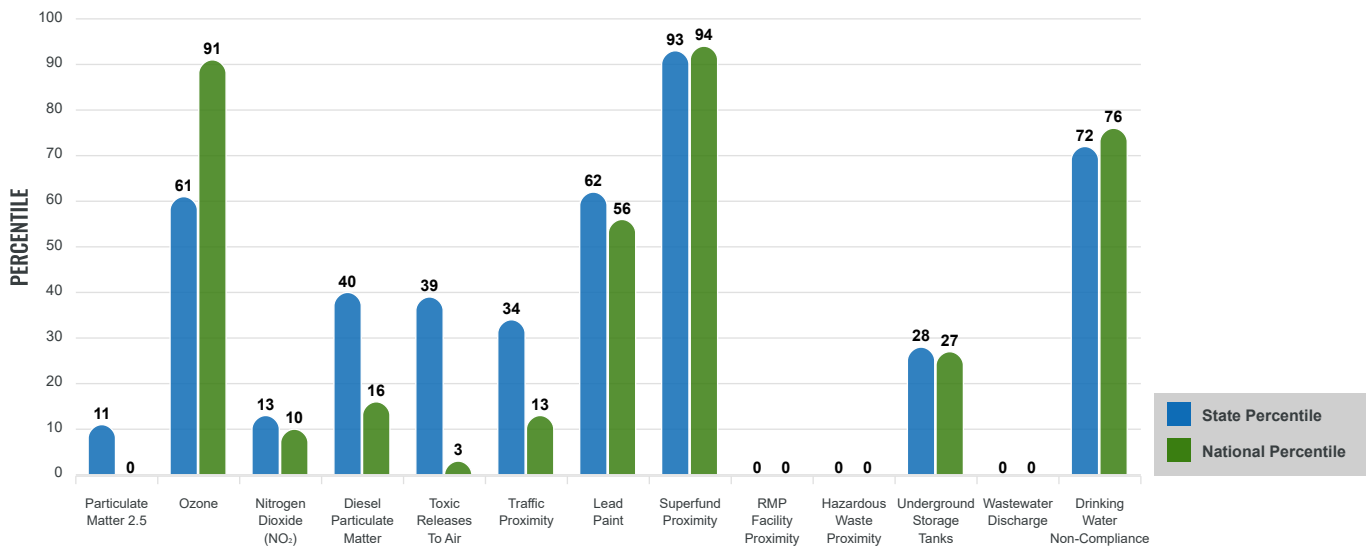
### EJ INDEXES FOR THE SELECTED LOCATION



## SUPPLEMENTAL INDEXES

The supplemental indexes offer a different perspective on community-level vulnerability. They combine data on percent low income, percent persons with disabilities, percent less than high school education, percent limited English speaking, and percent low life expectancy with a single environmental indicator.

### SUPPLEMENTAL INDEXES FOR THE SELECTED LOCATION



Report for 5 miles Ring Centered at 35.306786,-107.795951

Report produced September 24, 2024 using EJScreen Version 2.3

# EJScreen Environmental and Socioeconomic Indicators Data

SELECTED VARIABLES	VALUE	STATE AVERAGE	PERCENTILE IN STATE	USA AVERAGE	PERCENTILE IN USA
<b>ENVIRONMENTAL BURDEN INDICATORS</b>					
Particulate Matter 2.5 (µg/m <sup>3</sup> )	4.66	6.11	6	8.45	0
Ozone (ppb)	64.6	65.3	37	61.8	69
Nitrogen Dioxide (NO <sub>2</sub> ) (ppbv)	2.8	8.1	8	7.8	5
Diesel Particulate Matter (µg/m <sup>3</sup> )	0.0525	0.187	26	0.191	9
Toxic Releases to Air (toxicity-weighted concentration)	0.4	29	40	4,600	3
Traffic Proximity (daily traffic count/distance to road)	28,000	730,000	22	1,700,000	8
Lead Paint (% Pre-1960 Housing)	0.1	0.19	51	0.3	36
Superfund Proximity (site count/km distance)	0.52	0.34	87	0.39	84
RMP Facility Proximity (facility count/km distance)	0	0.2	0	0.57	0
Hazardous Waste Proximity (facility count/km distance)	0	1.2	0	3.5	0
Underground Storage Tanks (count/km <sup>2</sup> )	0.00022	2.8	27	3.6	26
Wastewater Discharge (toxicity-weighted concentration/m distance)	0	990000	0	700000	0
Drinking Water Non-Compliance (points)	10	5.6	87	2.2	92
<b>SOCIOECONOMIC INDICATORS</b>					
Demographic Index USA	2.93	N/A	N/A	1.34	94
Supplemental Demographic Index USA	2.48	N/A	N/A	1.64	88
Demographic Index State	3.32	2.16	89	N/A	N/A
Supplemental Demographic Index State	2.2	1.62	81	N/A	N/A
People of Color	95%	62%	90	40%	92
Low Income	63%	39%	82	30%	90
Unemployment Rate	14%	6%	87	6%	91
Limited English Speaking Households	7%	6%	72	5%	80
Less Than High School Education	21%	14%	76	11%	83
Under Age 5	6%	5%	65	5%	60
Over Age 64	17%	20%	49	18%	54

\*Diesel particulate matter index is from the EPA's Air Toxics Data Update, which is the Agency's ongoing, comprehensive evaluation of air toxics in the United States. This effort aims to prioritize air toxics, emission sources, and locations of interest for further study. It is important to remember that the air toxics data presented here provide broad estimates of health risks over geographic areas of the country, not definitive risks to specific individuals or locations. More information on the Air Toxics Data Update can be found at: <https://www.epa.gov/haps/air-toxics-data-update>.

### Sites reporting to EPA within defined area:

Superfund .....	1
Hazardous Waste, Treatment, Storage, and Disposal Facilities .....	0
Water Dischargers .....	3
Air Pollution .....	0
Brownfields .....	0
Toxic Release Inventory .....	0

### Other community features within defined area:

Schools .....	0
Hospitals .....	0
Places of Worship .....	0

### Other environmental data:

Air Non-attainment .....	No
Impaired Waters .....	Yes

Selected location contains American Indian Reservation Lands* .....	Yes
Selected location contains a "Justice40 (CEJST)" disadvantaged community .....	Yes
Selected location contains an EPA IRA disadvantaged community .....	Yes

Report for 5 miles Ring Centered at 35.306786,-107.795951  
 Report produced September 24, 2024 using EJScreen Version 2.3

## EJScreen Environmental and Socioeconomic Indicators Data

### HEALTH INDICATORS

INDICATOR	VALUE	STATE AVERAGE	STATE PERCENTILE	US AVERAGE	US PERCENTILE
Low Life Expectancy	22%	19%	70	20%	70
Heart Disease	8.5	5.9	93	5.8	92
Asthma	14.1	11.2	94	10.3	98
Cancer	5.4	6.1	35	6.4	29
Persons with Disabilities	19.8%	17.1%	70	13.7%	84

### CLIMATE INDICATORS

INDICATOR	VALUE	STATE AVERAGE	STATE PERCENTILE	US AVERAGE	US PERCENTILE
Flood Risk	17%	9%	85	12%	81
Wildfire Risk	23%	58%	34	14%	83

### CRITICAL SERVICE GAPS

INDICATOR	VALUE	STATE AVERAGE	STATE PERCENTILE	US AVERAGE	US PERCENTILE
Broadband Internet	66%	20%	97	13%	99
Lack of Health Insurance	16%	10%	84	9%	86
Housing Burden	No	N/A	N/A	N/A	N/A
Transportation Access Burden	Yes	N/A	N/A	N/A	N/A
Food Desert	Yes	N/A	N/A	N/A	N/A

Report for 5 miles Ring Centered at 35.306786,-107.795951

Report produced September 24, 2024 using EJScreen Version 2.3

Location: User-specified point center at 35.306786, -107.795951  
 Ring (buffer): 5-miles radius  
 Description: Charlotte NM0143

Summary of ACS Estimates		2018 - 2022
Population		35
Population Density (per sq. mile)		0
People of Color Population		34
% People of Color Population		95%
Households		20
Housing Units		26
Housing Units Built Before 1950		1
Per Capita Income		16,818
Land Area (sq. miles) (Source: SF1)		71.44
% Land Area		100%
Water Area (sq. miles) (Source: SF1)		0.10
% Water Area		0%

	2018 - 2022 ACS Estimates	Percent	MOE (±)
<b>Population by Race</b>			
Total	35	100%	520
Population Reporting One Race	33	92%	879
White	4	13%	377
Black	1	4%	196
American Indian	26	74%	231
Asian	0	0%	13
Pacific Islander	0	0%	13
Some Other Race	0	1%	49
Population Reporting Two or More Races	3	8%	162
Total Hispanic Population	7	18%	449
Total Non-Hispanic Population	29		
White Alone	2	5%	141
Black Alone	1	4%	196
American Indian Alone	26	72%	229
Non-Hispanic Asian Alone	0	0%	13
Pacific Islander Alone	0	0%	13
Other Race Alone	0	0%	13
Two or More Races Alone	0	0%	14
<b>Population by Sex</b>			
Male	17	48%	410
Female	19	52%	244
<b>Population by Age</b>			
Age 0-4	2	6%	60
Age 0-17	9	26%	130
Age 18+	26	74%	419
Age 65+	6	17%	203

**Data Note:** Detail may not sum to totals due to rounding. Hispanic population can be of any race.

N/A means not available. **Source:** U.S. Census Bureau, American Community Survey (ACS) 2018 - 2022

Location: User-specified point center at 35.306786, -107.795951  
 Ring (buffer): 5-miles radius  
 Description: Charlotte NM0143

	2018 - 2022 ACS Estimates	Percent	MOE (±)
<b>Population 25+ by Educational Attainment</b>			
Total	23	100%	353
Less than 9th Grade	2	8%	36
9th - 12th Grade, No Diploma	3	14%	68
High School Graduate	11	48%	270
Some College, No Degree	5	23%	148
Associate Degree	0	2%	47
Bachelor's Degree or more	1	7%	89
<b>Population Age 5+ Years by Ability to Speak English</b>			
Total	33	100%	513
Speak only English	17	50%	390
Non-English at Home <sup>1+2+3+4</sup>	17	50%	232
<sup>1</sup> Speak English "very well"	15	45%	222
<sup>2</sup> Speak English "well"	1	3%	75
<sup>3</sup> Speak English "not well"	0	1%	49
<sup>4</sup> Speak English "not at all"	0	0%	45
<sup>3+4</sup> Speak English "less than well"	1	2%	66
<sup>2+3+4</sup> Speak English "less than very well"	2	5%	100
<b>Limited English Speaking Households*</b>			
Total	1	100%	64
Speak Spanish	0	0%	13
Speak Other Indo-European Languages	0	0%	13
Speak Asian-Pacific Island Languages	0	0%	13
Speak Other Languages	1	100%	60
<b>Households by Household Income</b>			
Household Income Base	20	100%	240
< \$15,000	7	33%	98
\$15,000 - \$25,000	1	6%	18
\$25,000 - \$50,000	6	31%	140
\$50,000 - \$75,000	3	14%	213
\$75,000 +	3	16%	124
<b>Occupied Housing Units by Tenure</b>			
Total	20	100%	240
Owner Occupied	19	94%	163
Renter Occupied	1	6%	204
<b>Employed Population Age 16+ Years</b>			
Total	28	100%	448
In Labor Force	13	46%	398
Civilian Unemployed in Labor Force	2	15%	104
Not In Labor Force	15	54%	269

**Data Note:** Detail may not sum to totals due to rounding. Hispanic population can be of anyrace.

N/A means not available. **Source:** U.S. Census Bureau, American Community Survey (ACS)

\*Households in which no one 14 and over speaks English "very well" or speaks English only.

Location: User-specified point center at 35.306786, -107.795951

Ring (buffer): 5-miles radius

Description: Charlotte NM0143

	2018 - 2022 ACS Estimates	Percent	MOE (±)
<b>Population by Language Spoken at Home*</b>			
Total (persons age 5 and above)	N/A	N/A	N/A
English	N/A	N/A	N/A
Spanish	N/A	N/A	N/A
French, Haitian, or Cajun	N/A	N/A	N/A
German or other West Germanic	N/A	N/A	N/A
Russian, Polish, or Other Slavic	N/A	N/A	N/A
Other Indo-European	N/A	N/A	N/A
Korean	N/A	N/A	N/A
Chinese (including Mandarin, Cantonese)	N/A	N/A	N/A
Vietnamese	N/A	N/A	N/A
Tagalog (including Filipino)	N/A	N/A	N/A
Other Asian and Pacific Island	N/A	N/A	N/A
Arabic	N/A	N/A	N/A
Other and Unspecified	N/A	N/A	N/A
Total Non-English	N/A	N/A	N/A

**Data Note:** Detail may not sum to totals due to rounding. Hispanic population can be of any race.  
 N/A means not available. **Source:** U.S. Census Bureau, American Community Survey (ACS) 2018 - 2022.  
 \*Population by Language Spoken at Home is available at the census tract summary level and up.