

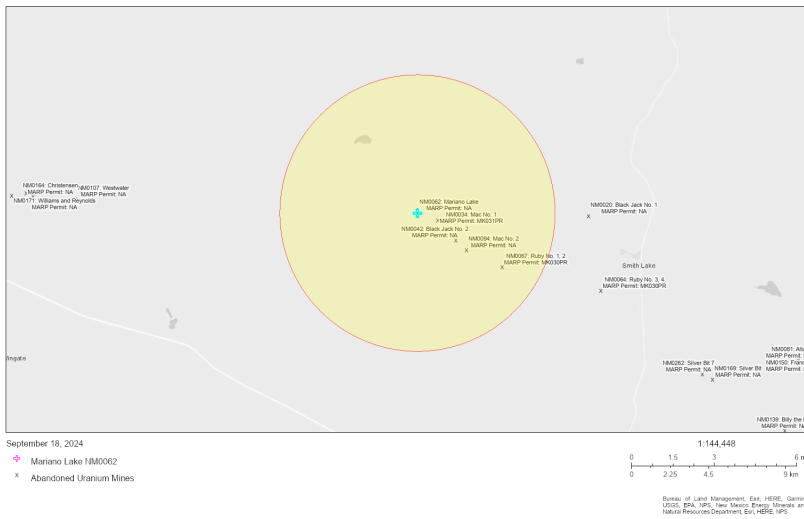


EJScreen Community Report

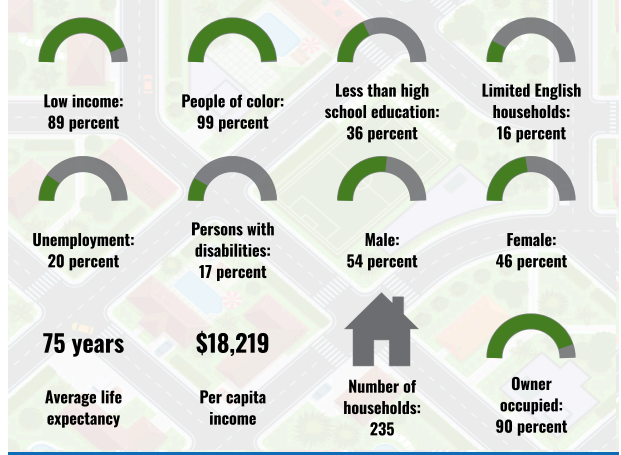
This report provides environmental and socioeconomic information for user-defined areas, and combines that data into environmental justice and supplemental indexes.

Mariano Lake NM0062

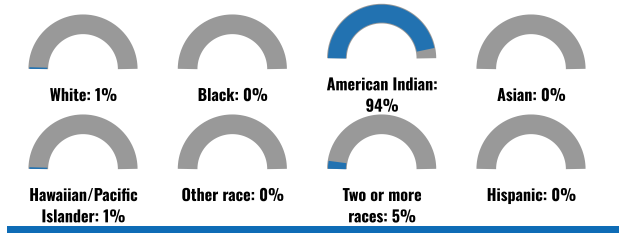
5 miles Ring Centered at 35.547089,-108.278010
 Population: 749
 Area in square miles: 78.53



COMMUNITY INFORMATION



BREAKDOWN BY RACE



BREAKDOWN BY AGE



LIMITED ENGLISH SPEAKING BREAKDOWN



LANGUAGES SPOKEN AT HOME

LANGUAGE	PERCENT
English	40%
Other and Unspecified	60%
Total Non-English	60%

Notes: Numbers may not sum to totals due to rounding. Hispanic population can be of any race. Source: U.S. Census Bureau American Community Survey (ACS) 2018-2022. Life expectancy data comes from the Centers for Disease Control.

Report for 5 miles Ring Centered at 35.547089,-108.278010
 Report produced September 18, 2024 using EJScreen Version 2.3

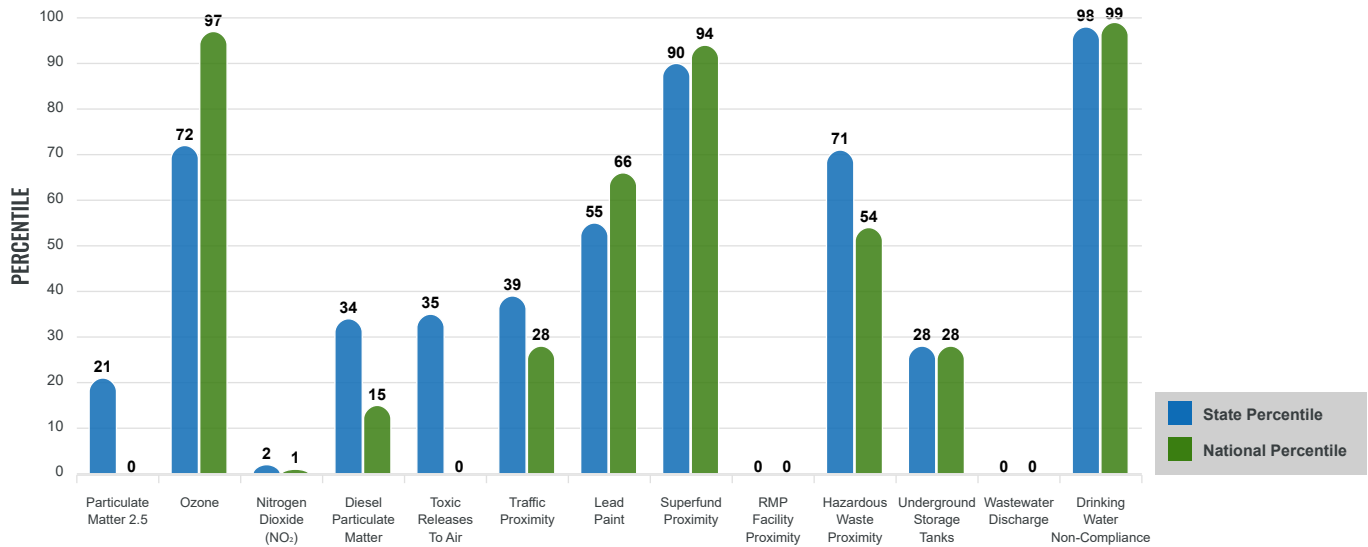
Environmental Justice & Supplemental Indexes

The environmental justice and supplemental indexes are a combination of environmental and socioeconomic information. There are thirteen EJ indexes and supplemental indexes in EJScreen reflecting the 13 environmental indicators. The indexes for a selected area are compared to those for all other locations in the state or nation. For more information and calculation details on the EJ and supplemental indexes, please visit the [EJScreen website](#).

EJ INDEXES

The EJ indexes help users screen for potential EJ concerns. To do this, the EJ index combines data on low income and people of color populations with a single environmental indicator.

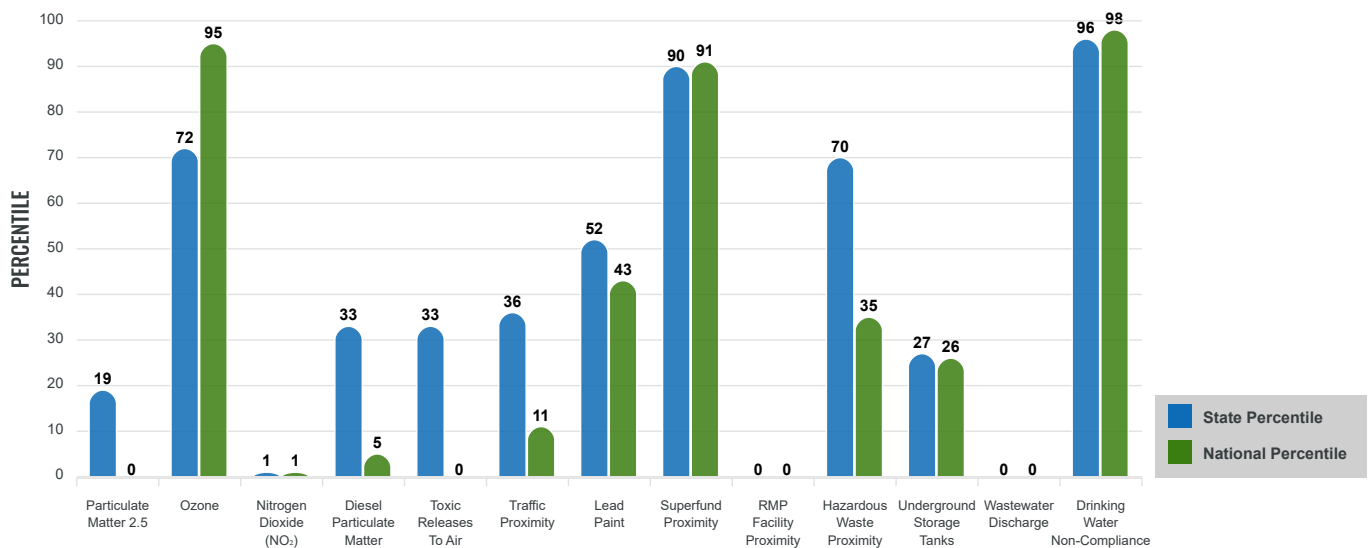
EJ INDEXES FOR THE SELECTED LOCATION



SUPPLEMENTAL INDEXES

The supplemental indexes offer a different perspective on community-level vulnerability. They combine data on percent low income, percent persons with disabilities, percent less than high school education, percent limited English speaking, and percent low life expectancy with a single environmental indicator.

SUPPLEMENTAL INDEXES FOR THE SELECTED LOCATION



Report for 5 miles Ring Centered at 35.547089,-108.278010

Report produced September 18, 2024 using EJScreen Version 2.3

EJScreen Environmental and Socioeconomic Indicators Data

SELECTED VARIABLES	VALUE	STATE AVERAGE	PERCENTILE IN STATE	USA AVERAGE	PERCENTILE IN USA
ENVIRONMENTAL BURDEN INDICATORS					
Particulate Matter 2.5 (µg/m ³)	4.74	6.11	9	8.45	0
Ozone (ppb)	64.1	65.3	35	61.8	67
Nitrogen Dioxide (NO ₂) (ppbv)	0.86	8.1	0	7.8	0
Diesel Particulate Matter (µg/m ³)	0.0322	0.187	15	0.191	3
Toxic Releases to Air (toxicity-weighted concentration)	0	29	15	4,600	0
Traffic Proximity (daily traffic count/distance to road)	18,000	730,000	19	1,700,000	6
Lead Paint (% Pre-1960 Housing)	0.03	0.19	31	0.3	22
Superfund Proximity (site count/km distance)	0.058	0.34	61	0.39	56
RMP Facility Proximity (facility count/km distance)	0	0.2	0	0.57	0
Hazardous Waste Proximity (facility count/km distance)	0.074	1.2	37	3.5	16
Underground Storage Tanks (count/km ²)	0.0005	2.8	28	3.6	26
Wastewater Discharge (toxicity-weighted concentration/m distance)	0	990000	0	700000	0
Drinking Water Non-Compliance (points)	1.9	5.6	81	2.2	84
SOCIOECONOMIC INDICATORS					
Demographic Index USA	3.67	N/A	N/A	1.34	99
Supplemental Demographic Index USA	3.08	N/A	N/A	1.64	96
Demographic Index State	4.04	2.16	99	N/A	N/A
Supplemental Demographic Index State	2.81	1.62	94	N/A	N/A
People of Color	99%	62%	96	40%	96
Low Income	89%	39%	99	30%	99
Unemployment Rate	20%	6%	94	6%	96
Limited English Speaking Households	16%	6%	87	5%	90
Less Than High School Education	36%	14%	92	11%	95
Under Age 5	3%	5%	40	5%	34
Over Age 64	15%	20%	42	18%	47

*Diesel particulate matter index is from the EPA's Air Toxics Data Update, which is the Agency's ongoing, comprehensive evaluation of air toxics in the United States. This effort aims to prioritize air toxics, emission sources, and locations of interest for further study. It is important to remember that the air toxics data presented here provide broad estimates of health risks over geographic areas of the country, not definitive risks to specific individuals or locations. More information on the Air Toxics Data Update can be found at: <https://www.epa.gov/haps/air-toxics-data-update>.

Sites reporting to EPA within defined area:

Superfund	0
Hazardous Waste, Treatment, Storage, and Disposal Facilities	0
Water Dischargers	5
Air Pollution	0
Brownfields	0
Toxic Release Inventory	0

Other community features within defined area:

Schools	1
Hospitals	0
Places of Worship	3

Other environmental data:

Air Non-attainment	No
Impaired Waters	Yes

Selected location contains American Indian Reservation Lands*	Yes
Selected location contains a "Justice40 (CEJST)" disadvantaged community	Yes
Selected location contains an EPA IRA disadvantaged community	Yes

Report for 5 miles Ring Centered at 35.547089,-108.278010
 Report produced September 18, 2024 using EJScreen Version 2.3

EJScreen Environmental and Socioeconomic Indicators Data

HEALTH INDICATORS

INDICATOR	VALUE	STATE AVERAGE	STATE PERCENTILE	US AVERAGE	US PERCENTILE
Low Life Expectancy	23%	19%	83	20%	81
Heart Disease	9.4	5.9	97	5.8	96
Asthma	16.3	11.2	99	10.3	99
Cancer	5.2	6.1	27	6.4	25
Persons with Disabilities	16.6%	17.1%	52	13.7%	72

CLIMATE INDICATORS

INDICATOR	VALUE	STATE AVERAGE	STATE PERCENTILE	US AVERAGE	US PERCENTILE
Flood Risk	0%	9%	0	12%	0
Wildfire Risk	0%	58%	0	14%	0

CRITICAL SERVICE GAPS

INDICATOR	VALUE	STATE AVERAGE	STATE PERCENTILE	US AVERAGE	US PERCENTILE
Broadband Internet	67%	20%	97	13%	99
Lack of Health Insurance	19%	10%	91	9%	91
Housing Burden	No	N/A	N/A	N/A	N/A
Transportation Access Burden	Yes	N/A	N/A	N/A	N/A
Food Desert	Yes	N/A	N/A	N/A	N/A

Report for 5 miles Ring Centered at 35.547089,-108.278010

Report produced September 18, 2024 using EJScreen Version 2.3

Location: User-specified point center at 35.547089, -108.278010
 Ring (buffer): 5-miles radius
 Description: Mariano Lake NM0062

Summary of ACS Estimates		2018 - 2022
Population		749
Population Density (per sq. mile)		10
People of Color Population		743
% People of Color Population		99%
Households		235
Housing Units		317
Housing Units Built Before 1950		6
Per Capita Income		18,219
Land Area (sq. miles) (Source: SF1)		73.89
% Land Area		100%
Water Area (sq. miles) (Source: SF1)		0.05
% Water Area		0%

	2018 - 2022 ACS Estimates	Percent	MOE (±)
Population by Race			
Total	749	100%	313
Population Reporting One Race	711	95%	488
White	6	1%	123
Black	0	0%	13
American Indian	700	94%	313
Asian	0	0%	13
Pacific Islander	5	1%	13
Some Other Race	0	0%	13
Population Reporting Two or More Races	37	5%	49
Total Hispanic Population	1	0%	62
Total Non-Hispanic Population	748		
White Alone	5	1%	123
Black Alone	0	0%	13
American Indian Alone	700	94%	313
Non-Hispanic Asian Alone	0	0%	13
Pacific Islander Alone	5	1%	13
Other Race Alone	0	0%	13
Two or More Races Alone	37	5%	49
Population by Sex			
Male	406	54%	175
Female	343	46%	181
Population by Age			
Age 0-4	23	3%	28
Age 0-17	165	22%	64
Age 18+	583	78%	181
Age 65+	115	15%	55

Data Note: Detail may not sum to totals due to rounding. Hispanic population can be of any race.

N/A means not available. **Source:** U.S. Census Bureau, American Community Survey (ACS) 2018 - 2022

Location: User-specified point center at 35.547089, -108.278010
 Ring (buffer): 5-miles radius
 Description: Mariano Lake NM0062

	2018 - 2022 ACS Estimates	Percent	MOE (±)
Population 25+ by Educational Attainment			
Total	493	100%	190
Less than 9th Grade	57	12%	48
9th - 12th Grade, No Diploma	121	24%	57
High School Graduate	213	43%	90
Some College, No Degree	59	12%	74
Associate Degree	17	3%	23
Bachelor's Degree or more	26	5%	109
Population Age 5+ Years by Ability to Speak English			
Total	725	100%	298
Speak only English	257	35%	138
Non-English at Home ¹⁺²⁺³⁺⁴	468	65%	215
¹ Speak English "very well"	390	54%	215
² Speak English "well"	64	9%	108
³ Speak English "not well"	12	2%	73
⁴ Speak English "not at all"	3	0%	44
³⁺⁴ Speak English "less than well"	14	2%	85
²⁺³⁺⁴ Speak English "less than very well"	78	11%	137
Limited English Speaking Households*			
Total	37	100%	44
Speak Spanish	0	0%	13
Speak Other Indo-European Languages	0	0%	13
Speak Asian-Pacific Island Languages	0	0%	13
Speak Other Languages	37	100%	38
Households by Household Income			
Household Income Base	235	100%	92
< \$15,000	94	40%	41
\$15,000 - \$25,000	47	20%	21
\$25,000 - \$50,000	59	25%	25
\$50,000 - \$75,000	6	3%	36
\$75,000 +	29	12%	106
Occupied Housing Units by Tenure			
Total	235	100%	92
Owner Occupied	212	90%	64
Renter Occupied	23	10%	94
Employed Population Age 16+ Years			
Total	605	100%	229
In Labor Force	214	35%	157
Civilian Unemployed in Labor Force	43	20%	27
Not In Labor Force	391	65%	158

Data Note: Detail may not sum to totals due to rounding. Hispanic population can be of anyrace.

N/A means not available. **Source:** U.S. Census Bureau, American Community Survey (ACS)

*Households in which no one 14 and over speaks English "very well" or speaks English only.

Location: User-specified point center at 35.547089, -108.278010

Ring (buffer): 5-miles radius

Description: Mariano Lake NM0062

	2018 - 2022 ACS Estimates	Percent	MOE (±)
Population by Language Spoken at Home*			
Total (persons age 5 and above)	1,097	100%	267
English	443	40%	189
Spanish	0	0%	13
French, Haitian, or Cajun	0	0%	13
German or other West Germanic	0	0%	13
Russian, Polish, or Other Slavic	0	0%	13
Other Indo-European	0	0%	13
Korean	0	0%	13
Chinese (including Mandarin, Cantonese)	0	0%	13
Vietnamese	0	0%	13
Tagalog (including Filipino)	0	0%	13
Other Asian and Pacific Island	0	0%	13
Arabic	0	0%	13
Other and Unspecified	654	60%	253
Total Non-English	654	60%	327

Data Note: Detail may not sum to totals due to rounding. Hispanic population can be of any race.
N/A means not available. **Source:** U.S. Census Bureau, American Community Survey (ACS) 2018 - 2022.
*Population by Language Spoken at Home is available at the census tract summary level and up.