



**NEW MEXICO ENVIRONMENT DEPARTMENT**  
GROUND WATER QUALITY BUREAU  
PUBLIC INVOLVEMENT PLAN  
(PIP)



**Facility Name:** Valencia County Government – Parks and Rec

**Facility Location:** Rio Communities North  
Tomé Land Grant  
Sections 23, 24, 25, and 26, Township 16N, Range 02E  
Sections 17, 19, 20, and 30, Township 16N, Range 03E

**County:** Valencia

**Responsible Party:** Valencia County Government  
P.O Box 119  
Los Lunas, New Mexico 87031

**Agency:** Ground Water Quality Bureau  
Pollution Prevention Section

**GWQB Action:** Permitting - Renewal  
DP-1569

**Bureau Contact:** Shivanna Moriarty, Water Resource Professional  
(505) 795-3473  
[Shivanna.moriarty@env.nm.gov](mailto:Shivanna.moriarty@env.nm.gov) or  
[pps.general@env.nm.gov](mailto:pps.general@env.nm.gov)

Main bureau telephone number:  
(505) 827-2900

**EFFECTIVE DATE:** January 11, 2019

**REVISION DATE:** May 9, 2025

/s/ Jason Herman for

---

**Justin D. Ball, Chief**  
**Ground Water Quality Bureau**

## Element 1 – Public Involvement Plan (PIP) Overview

The New Mexico Environment Department (NMED or Department), Ground Water Quality Bureau (Bureau) has developed this PIP for the application for a Ground Water Discharge Permit renewal of the Ground Water Discharge Permit for Valencia County Government – Parks and Rec (formerly Valley Improvement Association – Landscape Irrigation). The permit for this facility is referred to as DP-1569.

The purpose of this PIP is to plan for providing public participation opportunities and information that may be needed for the community to participate in the permitting process for this facility. This PIP identifies information about the community and resources needed by the Bureau to incorporate community participation activities into the decision-making process. This PIP is developed in accordance with the Department’s *Public Participation Policy* (Policy 07-13 or Policy), and incorporates the requirements of the Policy, as well as applicable regulatory and statutory public participation requirements.

This PIP implements the “elements” set forth in the Policy. Those elements include:

1. An overview of the Public Involvement Plan for the community affected by the activity
2. Bureau contact names and contact information, specifically for Limited English Proficiency (LEP) language assistance services (e.g., translation, interpreters) or for disability accommodations
3. A summary of the regulatory public participation framework associated with discharge permits
4. A description of community/stakeholder groups based on results of a preliminary environmental justice (EJ) screening
5. Details about planned public outreach activities

In developing this PIP, community participation needs were assessed to ensure appropriate public outreach. This was accomplished by identifying whether there is a combination of environmental and demographic factors that may impact public participation (e.g., low-income community, minority community, LEP individuals, linguistically isolated households). Because the community located near the Valencia County Government – Parks and Rec includes a significant percentage of Spanish speakers, the Bureau will provide appropriate information in both English and Spanish.

Public involvement associated with discharge permits occurs at different stages and in different forms. Public involvement activities required by statute or regulation are mandatory and subject to statutory or regulatory deadlines. Mandatory public involvement activities and associated time requirements relevant to this PIP are noted in the *Table of Mandated Public Involvement Activities* at the end of this PIP.

The Bureau plans to conduct the public involvement activities related to the permitting process outlined in the *Table of Public Involvement Activities* below. The activity timeline and dates are tentative and subject to change.

### Table of Public Involvement Activities

Activity	Date
<b>Application Notice (PN-1)</b> See <i>Table of Mandated Public Involvement Activities</i> at the end of this PIP for details.	March 2025
<b>Placement of a hardcopy of the PIP in the local NMED office:</b> Los Lunas Field Office 475 Courthouse Road SE, Suite B Los Lunas, NM 87031 505-841-5280	May 2025 (anticipated)
<b>Notice of availability of draft permit (PN-2)</b> See <i>Table of Mandated Public Involvement Activities</i> .	Within 60 days of determining the application is technically complete.  Date to be determined.

All notices for upcoming meetings or hearings will include a statement that any person who requires assistance, an interpreter, or an auxiliary aid to participate in the process may contact a specifically identified Department person to request those services. Requested interpretation services during the meeting and accommodations or services for persons with disabilities will be arranged to the extent possible.

This PIP is a “living” document that may be amended for numerous reasons, including the consideration of public comments and feedback.

## Element 2 – Bureau Contact Information

### PIP Specific Contacts

The Bureau contact for this discharge permit is:

Shivanna Moriarty, Water Resource Professional  
 NMED Ground Water Quality Bureau  
 P.O. Box 5469, Santa Fe, NM 87502-5469  
 505-795-3473 / [Shivanna.Moriarty@env.nm.gov](mailto:Shivanna.Moriarty@env.nm.gov) / [pps.general@env.nm.gov](mailto:pps.general@env.nm.gov)

### Non-English Language Speaker Assistance

All public notices will contain a statement that non-English speakers may call the Bureau contact listed above and request language assistance in order to learn more about this permit or the permitting process. Arrangements may be made for document translation or interpretation related to the permitting process as necessary and as resources allow.

## **Individuals with Disabilities Assistance**

All public notices will contain a statement that individuals with disabilities may call the Bureau contact listed above and request assistance needed to participate in activities associated with the permitting process.

The following information will be provided in public notices so that individuals who are deaf, hard of hearing, or have difficulty speaking on the phone can contact the Bureau and ask questions about the activity or proceeding: Telephone conversation assistance is available through Relay New Mexico at no charge for people who are deaf, hard of hearing, or have difficulty speaking on the phone, by calling 1-800-659-1779 (English); 1-800-327-1857 (Spanish); TTY users: 1-800-659-8331.

## **Websites**

Outreach materials and notices will include links to the following website, where the Bureau's public notices, and PIP information are posted:

Ground Water Quality Bureau – <https://www.env.nm.gov/public-notices/>

## **Element 3 – Regulatory Framework for Public Participation Related to the Permitting Process**

The public participation regulatory framework associated with the permitting process is identified in the *Table of Mandated Public Involvement Activities* at the end of this PIP. The Table identifies activities subject to statutory or regulatory deadlines, the associated regulatory requirements, and the associated dates or time periods.

## **Element 4 – Description of Community/Stakeholder Groups Based on the EJSCREEN**

### **EJSCREEN Summary**

To provide for adequate public participation opportunities and meaningful involvement of persons in the permitting process, the affected communities must first be identified, informed about proposed environmental actions affecting the community, and invited to share their comments and concerns. The EJSCREEN tool developed by the U.S. Environmental Protection Agency (EPA) helps identify communities that are low income, have minority populations, and have limited English proficiency that may benefit from a variety of approaches for notification and outreach communication, which is no longer available, therefore, an unofficial copy hosted by the Public Environmental Data Partners is used. This information is used to help plan for the community's involvement in the public process for environmental activities or actions. In addition

to the EJSCREEN results, the Bureau may consider additional information such as the U.S. Census Bureau website or NMED’s EJ Mapping Tool.

The Bureau considers the affected community to be those persons living within a 4-mile radius of the discharge site(s). The results of the EJScreen Multisite Report (attached to this PIP) are summarized in the table below.

**EJSCREEN\* Results for the Affected Community**

Total population	18,703
Percentage People of Color population	72%
Percentage of the population by race	Population reporting one race: White: ..... 28% Black: ..... 2% American Indian: ..... 1% Asian: ..... 0% Hawaiian/Pacific Islander: ..... 0% Some Other Race: ..... 0% Hispanic: ..... 67%
Percentage of Limited English households	6%
Languages by percentage in Limited English-Speaking Breakdown	Spanish: ..... 100% Other Indo-European languages: .....0% Asian-Pacific Island languages: .....0% Other languages: ..... 0%
Percent linguistically isolated population, New Mexico**:	5.1%
Percentage Low Income	40%
Percentage Low Income, USA***	26%

\* An unofficial copy of EJScreen hosted by the Public Environmental Data Partners.

\*\* U.S. Census Bureau. 2020 American Community Survey 5-Year Estimates, Table S1602. Limited English-Speaking Households.

<https://data.census.gov/cedsci/table?q=S1602%3A%20LIMITED%20ENGLISH%20SPEAKING%20HOUSEHOLDS&g=0400000US35&tid=ACSST5Y2020.S1602> (date of access: 5/4/2022).

\*\*\* U.S. Census Bureau. 2020 American Community Survey 5-Year Estimates, from EJAM Report, an unofficial copy of EJScreen hosted by the Public Environmental Data Partners. (date of access: 3/5/2025).

The EJSCREEN results indicate that for the affected community the proportion of the population with limited English proficiency (LEP) is significant, and that the predominant non-English language/languages is/are Spanish. The Bureau has therefore performed a LEP assessment for the community and attaches that assessment to this PIP.

Because the affected community has a significant percentage of persons with difficulties communicating in English, the Bureau will consider the language and communication needs of this community when conducting public outreach and participation activities. To accomplish this the Bureau, to the extent its budget and time limitations allow, will provide the same information in Spanish as in English in public comment notices, public meeting notices, and other announcements (e.g., radio broadcasts, brochures, signs, postcards) and will strive to make public participation efforts as inclusive as possible. See Element 5 for more specifics on the public outreach and participation activities.

## **Element 5 – Detailed Actions and Outreach Activities with the Affected Public**

Public involvement activities required by statute or regulation for this permitting action are listed in the *Table of Mandated Public Involvement Activities* at the end of this document.

### **Public Participation – Outreach Activities**

The Bureau will conduct the following outreach activities during this permitting process:

- Placement of this PIP on the Bureau website and in nearby NMED field office
- Postal mailing and email notices
- Newspaper notices
- Notice posted on NMED website

Newspapers to be utilized in the notification process include:

- Statewide circulation (English): Albuquerque Journal
- Local circulation (English and Spanish): Valencia County News Bulletin – Valencia County

Local, state, and federal government agencies, tribal entities, land grant officials and colonias will be notified about the permitting process. A list of the agencies and officials notified can be provided upon request.

Indian Tribes, Pueblos and Nations will be notified about the permitting action through the contacts maintained by the Indian Affairs Department at the following URLs:

- <https://www.iad.state.nm.us/pueblo-tribes-and-nations/pueblos/>
- <https://www.iad.state.nm.us/pueblo-tribes-and-nations/navajo/>
- <https://www.iad.state.nm.us/pueblo-tribes-and-nations/apaches/>

Because of the proximity of the Tomé land grant, a courtesy email will be sent to the president of the land grant.

Timelines and methods for submitting public comments are specified in the *Table of Mandated Public Involvement Activities*. Final discharge permit documents will be available from the Bureau's contact identified in Element 2 of this PIP.

### **Postal Mailing or E-Mailing of Notices to Persons on the Facility-Specific Mailing List**

The Bureau solicits the names and contact information of interested parties with all public notices. The Bureau maintains those names on a Facility-Specific Mailing List and provides the individuals with information about regulatory activities for the facility. Individuals, organizations, and other interested parties are added to the mailing list as requested. All public notices will contain a statement directing interested individuals to contact the Bureau contact for this permit if they want to be added to the facility specific mailing list.

Other means of outreach such as fliers announcing public comment periods and/or public meetings or hearings may be posted in locations throughout the community (e.g., local businesses, schools, libraries) and on the Department's website, at the Bureau's discretion after consideration of public interest and input.

### **PIP Contingency Plan**

During a public health emergency or other unforeseen event outside the control of the Department, the Department will make every effort to ensure the public remains involved in and informed of the decision making and permit processes. The purpose of this PIP Contingency Plan is in part to address circumstances when public spaces are closed because of potential human exposure risks. The Department will attempt to identify and utilize alternate methods of document delivery to the public and public viewing when conventional methods and locations are unavailable. When it is unsafe to utilize the physical PIP and document repositories, the Department will consider utilizing electronic delivery methods deemed appropriate for the permitting action. While operating under the PIP Contingency Plan, the PN-2 will include a statement specifying that the PIP Contingency Plan is in effect and that, "instead of placing a copy of the PIP for this permitting action in a public location, NMED will make the PIP available to the community by sending the PIP by email or US mail to any community member requesting a copy. An individual may request a copy of the PIP utilizing the Bureau contact information in this public notice. When making such a request, please specify how you would like the document delivered. If you request a copy of a PIP, you will receive a revised PIP should the PIP be updated in the future." During the times of potential human exposure risks and the resultant implementation of this PIP Contingency Plan, public meetings and hearings will only be held when or through means by which the Department can ensure the public's health and safety and this PIP can be fully adhered to.

### **Attachments**

- LEP Assessment
- A copy of the EJSCREEN Multisite Report, and a map showing the area evaluated

## Table of Mandated Public Involvement Activities

Activity	Dates
<p>Application Notice (PN-1): The first notice of the Bureau’s receipt of the permit application – applicant’s obligations at 20.6.2.3108.B and C NMAC – Bureau’s obligations at 20.6.2.3108.E NMAC</p> <ul style="list-style-type: none"> <li>• Posting a flyer in a location conspicuous to the public – Applicant obligation</li> <li>• Newspaper display ads (PN-1 synopsis<sup>1</sup> in English and Spanish)- Applicant obligation</li> <li>• NMED website <a href="https://www.env.nm.gov/public-notices/">https://www.env.nm.gov/public-notices/</a></li> <li>• Notice to government agencies</li> <li>• Notice to interested parties</li> </ul>	<p>Within 30 days of the department deeming the application administratively complete</p>
<p>Permit Notice (PN-2): Notice to the public of the availability of a draft permit for a 30-day review and comment period – the notice will outline the process for requesting a public hearing – obligation at 20.6.2.3108.H through J NMAC</p> <ul style="list-style-type: none"> <li>• NMED website <a href="https://www.env.nm.gov/public-notices/">https://www.env.nm.gov/public-notices/</a></li> <li>• Newspaper legal ads</li> <li>• Notification of interested parties</li> <li>• Notice to government agencies</li> <li>• Notice to Indian Tribes, Pueblos and Nations</li> </ul>	<p>Within 60 days of the department determining the application is technically complete and drafting a permit.</p>
<p>Fact Sheet (for federal facilities, except those with only domestic waste discharges): To include general information regarding the permittee, the facility, the discharge, procedures to be followed in making a final permit determination, the comment period, procedures for a person to request a hearing, contact information to obtain a copy of the draft permit and fact sheet, and a brief summary of the basis of draft permit conditions – obligation at 20.6.2.3108.I NMAC<sup>2</sup></p>	<p>With the PN-2</p>
<p>Public Hearing Notice (if required): Upon the Department’s determination that there is substantial public interest in the permit – obligation at 20.6.2.3108.M NMAC. Notice includes information on how to participate in the hearing, and how to request an interpreter or auxiliary aid if needed.</p> <ul style="list-style-type: none"> <li>• NMED website</li> </ul>	<p>Notice of the hearing shall occur at least 30 days prior to the hearing.</p>

<sup>1</sup> Suitable for display, the abbreviated format of the PN-1 synopsis does not contain all the information provided by a full public notice, e.g., language assistance or non-discrimination information.

<sup>2</sup> NMED considers the cited regulation to more appropriately reference the information in 20.6.2.3108.K instead of distribution methods of 20.6.2.3108.J NMAC.

<p><a href="https://www.env.nm.gov/public-notices/">https://www.env.nm.gov/public-notices/</a></p> <ul style="list-style-type: none"> <li>• Newspapers</li> <li>• Notice to interested parties</li> <li>• Notice to government agencies</li> <li>• Notice to Indian Tribes, Pueblos and Nations</li> </ul>	
<p>Response to Comments (if comments received): Upon the Secretary’s decision regarding issuance of a discharge permit – obligation at 20.6.2.3109.B NMAC. The Response to Comments shall specify which provisions, if any, in the draft permit were changed and the reasons for the change, and shall briefly describe and respond to all significant comments on the draft permit raised during the public comment period or at any hearing. The Secretary shall notify persons who participated in the permitting action by mail or email of the action taken and the reasons for such action and shall include a copy of the Response to Comments.</p>	<p>Response is issued 30 days after the administrative record is complete and all required information is available</p>

**ATTACHMENT**  
**Limited English Proficiency (LEP) Assessment**  
**Facility: Valencia County Government – Parks and Rec, DP-1569**

**Factor 1: The Number and Proportion of LEP Individuals Eligible to be Served or Likely to be Encountered in Community of Concern**

See Public Involvement Plan (PIP), Table of EJSCREEN Results for the Affected Community.

Conclusions:

1. The percentage of limited English households is 6%, which is equal to the statewide average.
2. Spanish is the predominant non-English language spoken by LEP persons.
3. Historical participation: No one has requested to be placed on a facility-specific mailing list. A review of the administrative record for this facility indicates limited public interest/participation overall during the past 10 years. The review found no record of participation by the LEP community.

**Factor 2: Frequency with which LEP Individuals Might Come in Contact with the Program**

Contact with the discharge permitting process primarily occurs when a permit application is under review. The GWQB provides notice to the public and encourages participation. Individuals may participate by requesting information, submitting comments on draft permits, requesting hearings, and taking part in hearings. Some permits generate considerable public interest, but participation is low for most permits. Historical participation in permitting activities for this facility is summarized under Factor 1.

Conclusion:

LEP participation and overall public interest in this facility have been limited historically. Based on this record, the Bureau considers the potential for LEP contact with the permitting process to be “infrequent.”

**Factor 3: Nature and Importance of the Activity or Service Provided by the Program**

The permitting activity is deemed by the GWQB to be "important" to NMED, the impacted community, and the State of New Mexico. The permitting activity is important to NMED because the permit establishes site-specific requirements that must be met to ensure protection of public health and groundwater quality and provides a means to enforce those requirements. The permitting activity is important to the impacted community because poorly operated waste treatment facilities have the potential to pose a public nuisance and adversely affect the quality of life of people living in the vicinity of the facility. The permitting activity is important to the State of New Mexico because establishment of effective permits ensures that discharges will not impact

the State's limited groundwater resources, and that waste disposal is conducted in a consistent manner throughout the State.

Conclusion:

The GWQB considers the permitting activity “important” to NMED, to the state as a whole, and to the impacted community.

**Factor 4: Resources Available to NMED for LEP Services and Associated Costs**

For outreach to LEP communities associated with this permit action, NMED employs an in-house Spanish translator/interpreter and utilizes a phone interpretation service to assist during direct communication between LEP individuals and NMED staff. The costs of newspaper publications of public notice in Spanish and of interpretive services for a public meeting or hearing are being incorporated into the Bureau’s budget, to the extent possible. Fees collected from the permittee in accordance with the schedule at 20.6.2.3114 NMAC are not sufficient to cover these costs.

Conclusion:

The Bureau can accommodate the costs of the LEP services identified in this plan. If additional services are requested, the budgetary implications will be reviewed.

**LEP Services Plan:**

To accommodate the needs of the LEP individuals who may be interested in this permitting process, the Bureau plans to:

1. Translate the Public Notice Two (PN-2) and any subsequent public notices into Spanish and publish in a paper serving the local community.
2. Provide interpretive services at any public meeting or public hearing, if requested.
3. Interact with members of the LEP community using certified interpreters, when needed and feasible.

The Bureau will consider requests from members of the affected community for additional LEP services.

## EJScreen Multisite Report

This report summarizes environmental and socioeconomic information for user-defined areas, and combines that data into environmental justice and supplemental indexes.

## EJAM Report

Site 1 (ejam\_uniq\_id 1)  
with 4 mile buffer  
Population: 18,703

### Environmental and Socioeconomic Indicators Data

SELECTED VARIABLES	VALUE	STATE AVERAGE	PERCENTILE IN STATE	USA AVERAGE	PERCENTILE IN USA
<b>POLLUTION AND SOURCES</b>					
Particulate Matter (PM 2.5 in ug/m3)	6.15	6.11	52	8.45	7
Ozone (ppb)	65.7	65.3	47	61.8	73
Nitrogen Dioxide (NO2)	4.3	8.1	19	7.8	16
Diesel Particulate Matter (ug/m3)	0.105	0.187	47	0.191	30
Toxic Releases to Air	40	29	78	4,600	16
Traffic Proximity and Volume (daily traffic count/distance to road)	37,000	730,000	25	1,700,000	10
Lead Paint Indicator (% pre-1960s housing)	0.07	0.19	43	0.3	31
Superfund Proximity (site count/km distance)	0.00	0.34	0	0.39	0
RMP Proximity (facility count/km distance)	0.06	0.20	53	0.57	28
Hazardous Waste Proximity (facility count/km distance)	0.0	1.2	0	3.5	0
Underground Storage Tanks (UST) indicator	0.1	2.8	39	3.6	35
Wastewater Discharge Indicator (toxicity-weighted concentration/distance)	400	990,000	68	700,000	67
Drinking Water Non-Compliance	9.0	5.58	86	2.2	92
<b>SOCIOECONOMIC INDICATORS</b>					
Demographic Index USA	2.08	2.16	58	1.34	79
Supplemental Demographic Index USA	2.06	1.62	62	1.64	76
% Low Income	40%	39%	52	30%	70
% in limited English-speaking Households	6%	6%	68	5%	78
% Unemployed	8%	6%	68	6%	75
% with Less Than High School Education	20%	14%	73	11%	81
% under Age 5	7%	5%	72	5%	69
% over Age 64	16%	20%	44	18%	50
% People of Color	72%	62%	61	40%	79

### Environmental Justice & Supplemental Indexes

The environmental justice and supplemental indexes are a combination of environmental and socioeconomic information. For each of the environmental indicators in EJScreen, there is an EJ Index and a Supplemental EJ Index. The indexes for a selected area are compared to those for all other locations in the state or nation. For more information and calculation details on the EJ and supplemental indexes, please visit the [EJScreen website](#).

## DP- 1569 Valencia County Government – Parks and Rec

### EJ INDEXES

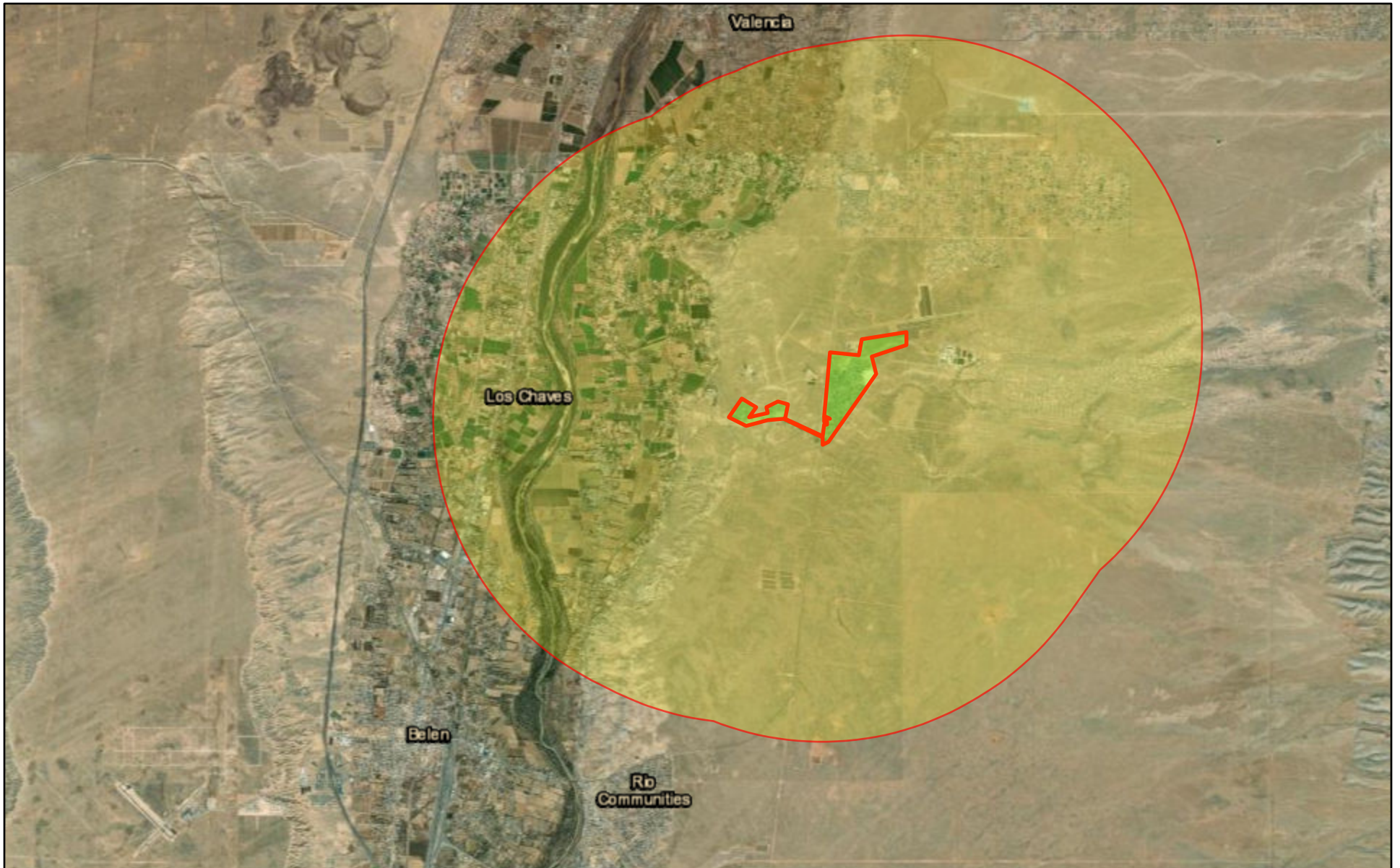
The EJ indexes help users screen for potential EJ concerns. To do this, the EJ index combines data on low income and people of color populations with a single environmental indicator.

SELECTED VARIABLES	PERCENTILE IN STATE	PERCENTILE IN USA
<b>EJ INDEXES</b>		
Particulate Matter EJ Index	64	19
Ozone EJ Index	68	93
Nitrogen Dioxide (NO2) EJ Index	24	43
Diesel Particulate Matter EJ Index	52	55
Toxic Releases to Air EJ Index	79	36
Traffic Proximity and Volume EJ Index	30	24
Lead Paint EJ Index	38	46
Superfund Proximity EJ Index	0	0
RMP Proximity EJ Index	55	41
Hazardous Waste Proximity EJ Index	0	0
Underground Storage Tanks EJ Index	31	42
Wastewater Discharge EJ Index	74	82
Drinking Water Non-Compliance EJ Index	73	83
<b>SUPPLEMENTAL EJ INDEXES</b>		
Particulate Matter Supplemental EJ Index	66	10
Ozone Supplemental EJ Index	72	94
Nitrogen Dioxide (NO2) Supplemental EJ Index	25	31
Diesel Particulate Matter Supplemental EJ Index	55	45
Toxic Releases to Air Supplemental EJ Index	81	23
Traffic Proximity and Volume Supplemental EJ Index	30	12
Lead Paint Supplemental EJ Index	38	32
Superfund Proximity Supplemental EJ Index	0	0
RMP Proximity Supplemental EJ Index	55	31
Hazardous Waste Proximity Supplemental EJ Index	0	0
Underground Storage Tanks Supplemental EJ Index	28	28
Wastewater Discharge Supplemental EJ Index	77	79
Drinking Water Non-Compliance Supplemental EJ Index	72	77

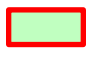
SELECTED VARIABLES	VALUE
<b>BREAKDOWN BY RACE</b>	
% Hispanic or Latino	67%
% Black or African American (non-Hispanic, single race)	2%
% Asian (non-Hispanic, single race)	0%
% American Indian and Alaska Native (non-Hispanic, single race)	1%
% Native Hawaiian and Other Pacific Islander (non-Hispanic, single race)	0%
% Other race (non-Hispanic, single race)	0%
% Two or more races (non-Hispanic)	2%
% White (non-Hispanic, single race)	28%
<b>BREAKDOWN BY GENDER</b>	
% Male	50%
% Female	50%
<b>LIMITED ENGLISH SPEAKING BREAKDOWN</b>	
%Spanish lang (as %of limited English hhlds)	100%
%Other Indo-European lang (as %of limited English hhlds)	0%
%Asian-Pacific Island lang (as %of limited English hhlds)	0%
%Other lang (as %of limited English hhlds)	0%

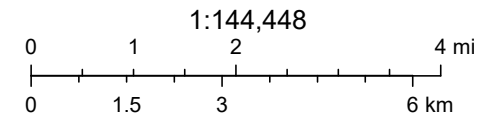
Note: Diesel particulate matter index is from the EPA's Air Toxics Data Update, which is the Agency's ongoing, comprehensive evaluation of air toxics in the United States. This effort aims to prioritize air toxics, emission sources, and locations of interest for further study. It is important to remember that the air toxics data presented here provide broad estimates of health risks over geographic areas of the country, not definitive risks to specific individuals or locations. More information on the Air Toxics Data Update can be found at: <https://www.epa.gov/haps/air-toxics-data-update>

# DP-1569 Valencia County Government-Parks & Rec



4/22/2025

 DP-1569 Reuse Areas



Esri, HERE, Garmin, Earthstar Geographics