

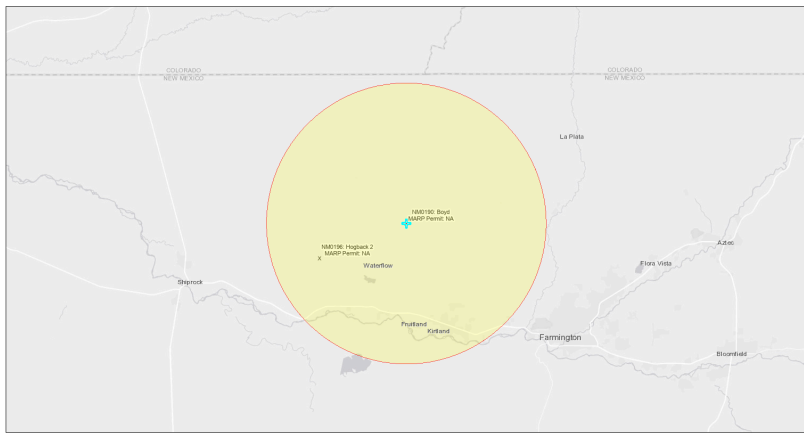


EJScreen Community Report

This report provides environmental and socioeconomic information for user-defined areas, and combines that data into environmental justice and supplemental indexes.

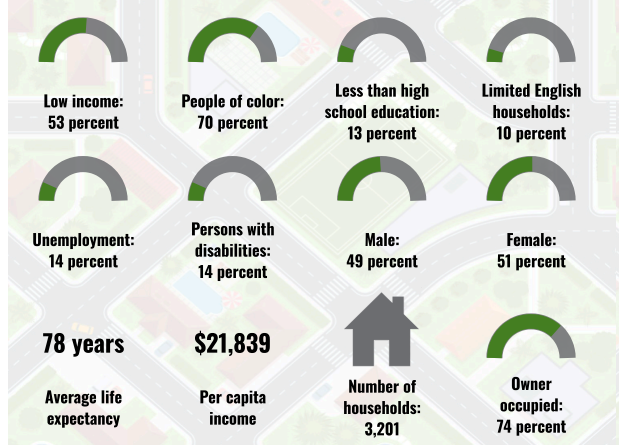
Boyd NM0190

10 miles Ring Centered at 36.845616,-108.404539
 Population: 10,770
 Area in square miles: 314.03

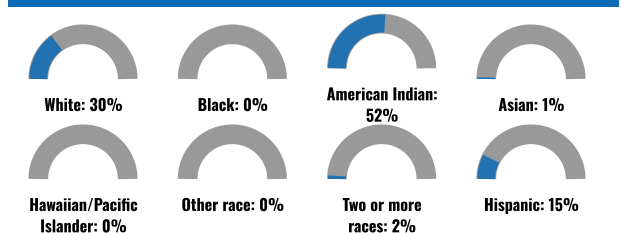


September 24, 2024
 Boyd NM0190
 Abandoned Uranium Mines
 1:288,895
 0 2.75 5.5 11 mi
 0 4.5 9 18 km
San Juan County, NM, Bureau of Land Management, Esri, HERE, Garmin, USGS, EPA, SPC, New Mexico Energy Mines and Natural Resources Department, Esri, HERE, SPC

COMMUNITY INFORMATION



BREAKDOWN BY RACE



BREAKDOWN BY AGE



LIMITED ENGLISH SPEAKING BREAKDOWN



Notes: Numbers may not sum to totals due to rounding. Hispanic population can be of any race. Source: U.S. Census Bureau American Community Survey (ACS) 2018-2022. Life expectancy data comes from the Centers for Disease Control.

LANGUAGES SPOKEN AT HOME

LANGUAGE	PERCENT
English	71%
Spanish	8%
Other Asian and Pacific Island	1%
Other and Unspecified	19%
Total Non-English	29%

Report for 10 miles Ring Centered at 36.845616,-108.404539
 Report produced September 24, 2024 using EJScreen Version 2.3

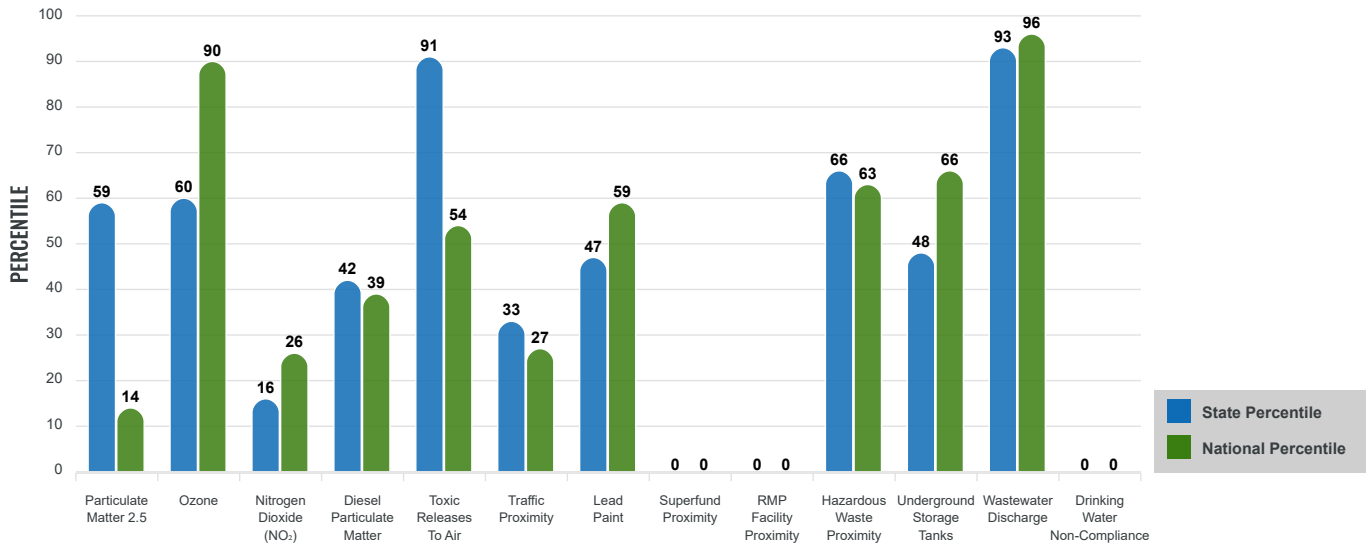
Environmental Justice & Supplemental Indexes

The environmental justice and supplemental indexes are a combination of environmental and socioeconomic information. There are thirteen EJ indexes and supplemental indexes in EJScreen reflecting the 13 environmental indicators. The indexes for a selected area are compared to those for all other locations in the state or nation. For more information and calculation details on the EJ and supplemental indexes, please visit the [EJScreen website](#).

EJ INDEXES

The EJ indexes help users screen for potential EJ concerns. To do this, the EJ index combines data on low income and people of color populations with a single environmental indicator.

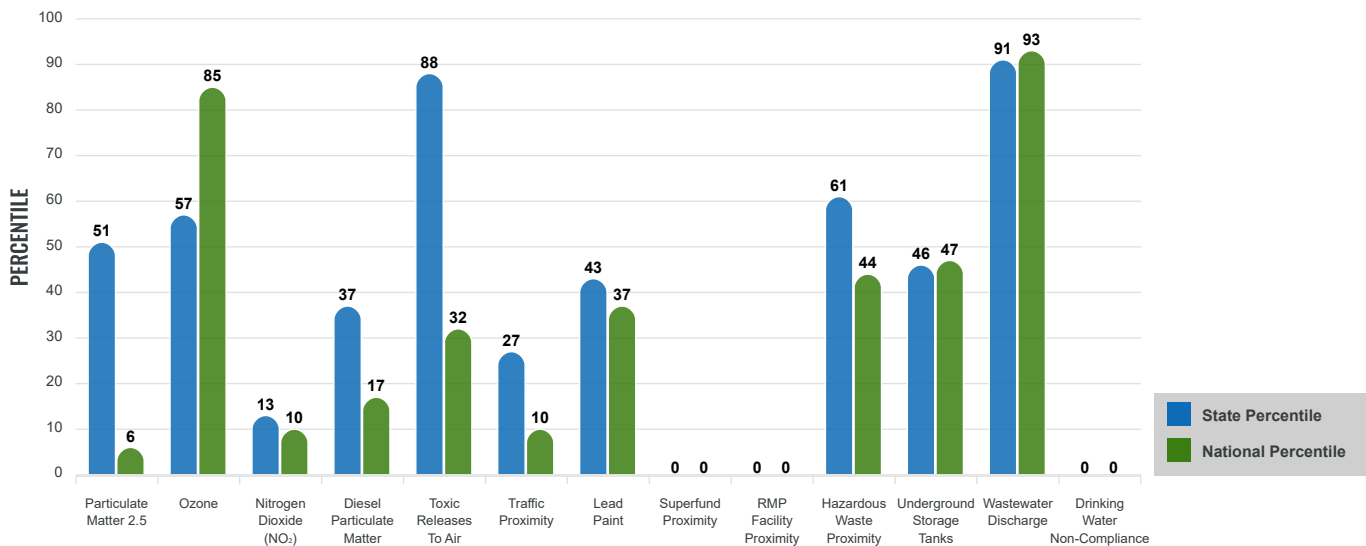
EJ INDEXES FOR THE SELECTED LOCATION



SUPPLEMENTAL INDEXES

The supplemental indexes offer a different perspective on community-level vulnerability. They combine data on percent low income, percent persons with disabilities, percent less than high school education, percent limited English speaking, and percent low life expectancy with a single environmental indicator.

SUPPLEMENTAL INDEXES FOR THE SELECTED LOCATION



Report for 10 miles Ring Centered at 36.845616,-108.404539

Report produced September 24, 2024 using EJScreen Version 2.3

EJScreen Environmental and Socioeconomic Indicators Data

SELECTED VARIABLES	VALUE	STATE AVERAGE	PERCENTILE IN STATE	USA AVERAGE	PERCENTILE IN USA
ENVIRONMENTAL BURDEN INDICATORS					
Particulate Matter 2.5 (µg/m ³)	5.82	6.11	41	8.45	4
Ozone (ppb)	65.3	65.3	42	61.8	72
Nitrogen Dioxide (NO ₂) (ppbv)	3.1	8.1	10	7.8	7
Diesel Particulate Matter (µg/m ³)	0.0613	0.187	30	0.191	12
Toxic Releases to Air (toxicity-weighted concentration)	140	29	97	4,600	27
Traffic Proximity (daily traffic count/distance to road)	33,000	730,000	24	1,700,000	9
Lead Paint (% Pre-1960 Housing)	0.077	0.19	44	0.3	32
Superfund Proximity (site count/km distance)	0	0.34	0	0.39	0
RMP Facility Proximity (facility count/km distance)	0	0.2	0	0.57	0
Hazardous Waste Proximity (facility count/km distance)	0.7	1.2	59	3.5	39
Underground Storage Tanks (count/km ²)	0.54	2.8	47	3.6	45
Wastewater Discharge (toxicity-weighted concentration/m distance)	29000000	990000	98	700000	99
Drinking Water Non-Compliance (points)	0	5.6	0	2.2	0
SOCIOECONOMIC INDICATORS					
Demographic Index USA	2.35	N/A	N/A	1.34	85
Supplemental Demographic Index USA	1.96	N/A	N/A	1.64	72
Demographic Index State	2.62	2.16	66	N/A	N/A
Supplemental Demographic Index State	1.72	1.62	59	N/A	N/A
People of Color	70%	62%	58	40%	77
Low Income	53%	39%	72	30%	84
Unemployment Rate	13%	6%	84	6%	88
Limited English Speaking Households	10%	6%	80	5%	85
Less Than High School Education	13%	14%	58	11%	66
Under Age 5	7%	5%	75	5%	73
Over Age 64	14%	20%	36	18%	40

*Diesel particulate matter index is from the EPA's Air Toxics Data Update, which is the Agency's ongoing, comprehensive evaluation of air toxics in the United States. This effort aims to prioritize air toxics, emission sources, and locations of interest for further study. It is important to remember that the air toxics data presented here provide broad estimates of health risks over geographic areas of the country, not definitive risks to specific individuals or locations. More information on the Air Toxics Data Update can be found at: <https://www.epa.gov/haps/air-toxics-data-update>.

Sites reporting to EPA within defined area:

Superfund	0
Hazardous Waste, Treatment, Storage, and Disposal Facilities	0
Water Dischargers	70
Air Pollution	27
Brownfields	0
Toxic Release Inventory	2

Other community features within defined area:

Schools	6
Hospitals	0
Places of Worship	4

Other environmental data:

Air Non-attainment	No
Impaired Waters	Yes

Selected location contains American Indian Reservation Lands*	Yes
Selected location contains a "Justice40 (CEJST)" disadvantaged community	Yes
Selected location contains an EPA IRA disadvantaged community	Yes

Report for 10 miles Ring Centered at 36.845616,-108.404539
 Report produced September 24, 2024 using EJScreen Version 2.3

EJScreen Environmental and Socioeconomic Indicators Data

HEALTH INDICATORS

INDICATOR	VALUE	STATE AVERAGE	STATE PERCENTILE	US AVERAGE	US PERCENTILE
Low Life Expectancy	19%	19%	49	20%	48
Heart Disease	5.6	5.9	39	5.8	48
Asthma	13.3	11.2	92	10.3	96
Cancer	5.1	6.1	26	6.4	24
Persons with Disabilities	14.1%	17.1%	37	13.7%	58

CLIMATE INDICATORS

INDICATOR	VALUE	STATE AVERAGE	STATE PERCENTILE	US AVERAGE	US PERCENTILE
Flood Risk	15%	9%	82	12%	78
Wildfire Risk	60%	58%	41	14%	86

CRITICAL SERVICE GAPS

INDICATOR	VALUE	STATE AVERAGE	STATE PERCENTILE	US AVERAGE	US PERCENTILE
Broadband Internet	33%	20%	80	13%	93
Lack of Health Insurance	14%	10%	78	9%	81
Housing Burden	No	N/A	N/A	N/A	N/A
Transportation Access Burden	Yes	N/A	N/A	N/A	N/A
Food Desert	Yes	N/A	N/A	N/A	N/A

Report for 10 miles Ring Centered at 36.845616,-108.404539

Report produced September 24, 2024 using EJScreen Version 2.3

Location: User-specified point center at 36.845616, -108.404539
 Ring (buffer): 10-miles radius
 Description: Boyd NM0190

Summary of ACS Estimates		2018 - 2022
Population		10,770
Population Density (per sq. mile)		33
People of Color Population		7,503
% People of Color Population		70%
Households		3,201
Housing Units		3,968
Housing Units Built Before 1950		224
Per Capita Income		21,839
Land Area (sq. miles) (Source: SF1)		324.18
% Land Area		100%
Water Area (sq. miles) (Source: SF1)		1.07
% Water Area		0%

	2018 - 2022 ACS Estimates	Percent	MOE (±)
Population by Race			
Total	10,770	100%	736
Population Reporting One Race	10,281	95%	1,925
White	3,560	33%	699
Black	10	0%	33
American Indian	5,876	55%	738
Asian	64	1%	51
Pacific Islander	0	0%	13
Some Other Race	770	7%	391
Population Reporting Two or More Races	490	5%	156
Total Hispanic Population	1,600	15%	425
Total Non-Hispanic Population	9,170		
White Alone	3,268	30%	699
Black Alone	10	0%	33
American Indian Alone	5,596	52%	738
Non-Hispanic Asian Alone	56	1%	51
Pacific Islander Alone	0	0%	13
Other Race Alone	14	0%	13
Two or More Races Alone	227	2%	113
Population by Sex			
Male	5,277	49%	401
Female	5,493	51%	429
Population by Age			
Age 0-4	793	7%	208
Age 0-17	3,050	28%	339
Age 18+	7,720	72%	336
Age 65+	1,485	14%	155

Data Note: Detail may not sum to totals due to rounding. Hispanic population can be of any race.

N/A means not available. **Source:** U.S. Census Bureau, American Community Survey (ACS) 2018 - 2022

Location: User-specified point center at 36.845616, -108.404539
 Ring (buffer): 10-miles radius
 Description: Boyd NM0190

	2018 - 2022 ACS Estimates	Percent	MOE (±)
Population 25+ by Educational Attainment			
Total	6,547	100%	336
Less than 9th Grade	236	4%	79
9th - 12th Grade, No Diploma	586	9%	101
High School Graduate	1,884	29%	213
Some College, No Degree	2,012	31%	189
Associate Degree	955	15%	165
Bachelor's Degree or more	874	13%	169
Population Age 5+ Years by Ability to Speak English			
Total	9,977	100%	607
Speak only English	6,362	64%	432
Non-English at Home ¹⁺²⁺³⁺⁴	3,616	36%	353
¹ Speak English "very well"	2,217	22%	266
² Speak English "well"	1,194	12%	257
³ Speak English "not well"	183	2%	66
⁴ Speak English "not at all"	22	0%	53
³⁺⁴ Speak English "less than well"	205	2%	79
²⁺³⁺⁴ Speak English "less than very well"	1,399	14%	265
Limited English Speaking Households*			
Total	330	100%	73
Speak Spanish	88	27%	69
Speak Other Indo-European Languages	0	0%	13
Speak Asian-Pacific Island Languages	36	11%	47
Speak Other Languages	206	62%	63
Households by Household Income			
Household Income Base	3,201	100%	166
< \$15,000	321	10%	121
\$15,000 - \$25,000	242	8%	79
\$25,000 - \$50,000	972	30%	161
\$50,000 - \$75,000	669	21%	116
\$75,000 +	996	31%	168
Occupied Housing Units by Tenure			
Total	3,201	100%	166
Owner Occupied	2,382	74%	161
Renter Occupied	818	26%	139
Employed Population Age 16+ Years			
Total	8,172	100%	526
In Labor Force	4,567	56%	358
Civilian Unemployed in Labor Force	627	14%	205
Not In Labor Force	3,605	44%	312

Data Note: Detail may not sum to totals due to rounding. Hispanic population can be of anyrace.

N/A means not available. **Source:** U.S. Census Bureau, American Community Survey (ACS)

*Households in which no one 14 and over speaks English "very well" or speaks English only.

Location: User-specified point center at 36.845616, -108.404539

Ring (buffer): 10-miles radius

Description: Boyd NM0190

	2018 - 2022 ACS Estimates	Percent	MOE (±)
Population by Language Spoken at Home*			
Total (persons age 5 and above)	8,829	100%	657
English	6,295	71%	541
Spanish	718	8%	221
French, Haitian, or Cajun	0	0%	13
German or other West Germanic	0	0%	13
Russian, Polish, or Other Slavic	0	0%	13
Other Indo-European	0	0%	13
Korean	20	0%	35
Chinese (including Mandarin, Cantonese)	0	0%	13
Vietnamese	0	0%	13
Tagalog (including Filipino)	0	0%	13
Other Asian and Pacific Island	75	1%	51
Arabic	0	0%	13
Other and Unspecified	1,721	19%	457
Total Non-English	2,534	29%	804

Data Note: Detail may not sum to totals due to rounding. Hispanic population can be of any race.
N/A means not available. **Source:** U.S. Census Bureau, American Community Survey (ACS) 2018 - 2022.
*Population by Language Spoken at Home is available at the census tract summary level and up.