



EJScreen Community Report

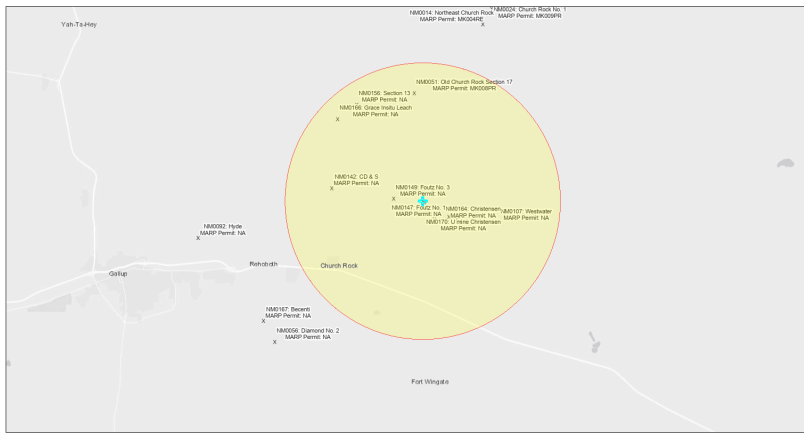
This report provides environmental and socioeconomic information for user-defined areas, and combines that data into environmental justice and supplemental indexes.

Foutz No. 2 NM0148

5 miles Ring Centered at 35.565675,-108.547191

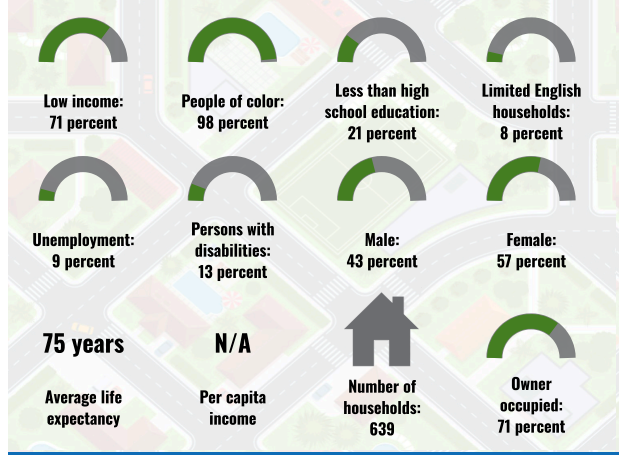
Population: 2,470

Area in square miles: 78.53

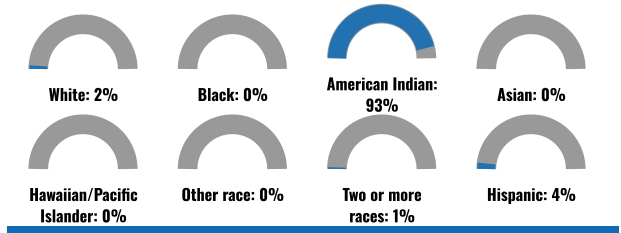


September 24, 2024
 Foutz No. 2 NM0148
 * Abandoned Uranium Mines
 1:144,448
 0 1.5 3 4.5 6 mi
 0 2.25 4.5 9 km
 Bureau of Land Management, EPA, HHS, Census, USGS, BIA, IHS, New Mexico Energy, Storage and Natural Resources Department, EIS, HHS, IHS

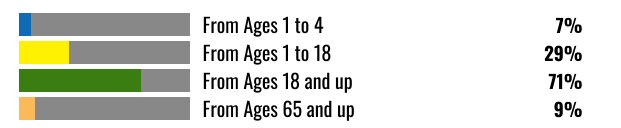
COMMUNITY INFORMATION



BREAKDOWN BY RACE



BREAKDOWN BY AGE



LIMITED ENGLISH SPEAKING BREAKDOWN



LANGUAGES SPOKEN AT HOME

LANGUAGE	PERCENT
English	45%
Other and Unspecified	55%
Total Non-English	55%

Notes: Numbers may not sum to totals due to rounding. Hispanic population can be of any race. Source: U.S. Census Bureau American Community Survey (ACS) 2018-2022. Life expectancy data comes from the Centers for Disease Control.

Report for 5 miles Ring Centered at 35.565675,-108.547191
 Report produced September 24, 2024 using EJScreen Version 2.3

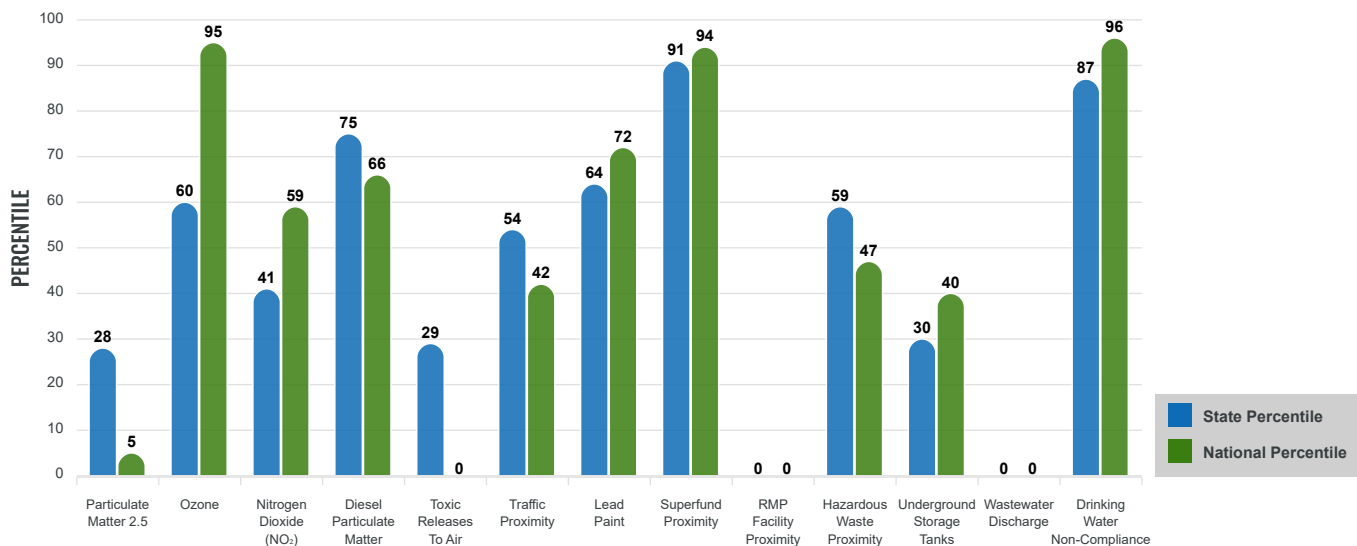
Environmental Justice & Supplemental Indexes

The environmental justice and supplemental indexes are a combination of environmental and socioeconomic information. There are thirteen EJ indexes and supplemental indexes in EJScreen reflecting the 13 environmental indicators. The indexes for a selected area are compared to those for all other locations in the state or nation. For more information and calculation details on the EJ and supplemental indexes, please visit the [EJScreen website](#).

EJ INDEXES

The EJ indexes help users screen for potential EJ concerns. To do this, the EJ index combines data on low income and people of color populations with a single environmental indicator.

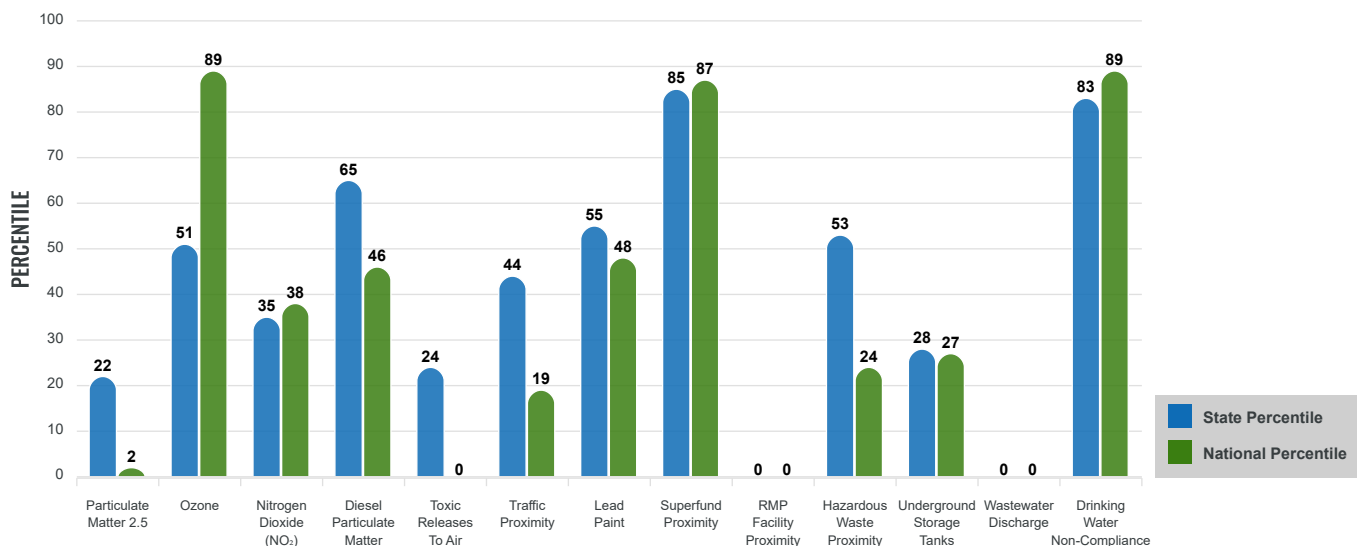
EJ INDEXES FOR THE SELECTED LOCATION



SUPPLEMENTAL INDEXES

The supplemental indexes offer a different perspective on community-level vulnerability. They combine data on percent low income, percent persons with disabilities, percent less than high school education, percent limited English speaking, and percent low life expectancy with a single environmental indicator.

SUPPLEMENTAL INDEXES FOR THE SELECTED LOCATION



Report for 5 miles Ring Centered at 35.565675,-108.547191

Report produced September 24, 2024 using EJScreen Version 2.3

EJScreen Environmental and Socioeconomic Indicators Data

SELECTED VARIABLES	VALUE	STATE AVERAGE	PERCENTILE IN STATE	USA AVERAGE	PERCENTILE IN USA
ENVIRONMENTAL BURDEN INDICATORS					
Particulate Matter 2.5 (µg/m ³)	4.91	6.11	14	8.45	1
Ozone (ppb)	63.7	65.3	31	61.8	66
Nitrogen Dioxide (NO ₂) (ppbv)	4.6	8.1	22	7.8	19
Diesel Particulate Matter (µg/m ³)	0.0928	0.187	43	0.191	25
Toxic Releases to Air (toxicity-weighted concentration)	0	29	14	4,600	0
Traffic Proximity (daily traffic count/distance to road)	49,000	730,000	28	1,700,000	12
Lead Paint (% Pre-1960 Housing)	0.084	0.19	46	0.3	33
Superfund Proximity (site count/km distance)	0.13	0.34	70	0.39	64
RMP Facility Proximity (facility count/km distance)	0	0.2	0	0.57	0
Hazardous Waste Proximity (facility count/km distance)	0.07	1.2	37	3.5	16
Underground Storage Tanks (count/km ²)	0.055	2.8	36	3.6	31
Wastewater Discharge (toxicity-weighted concentration/m distance)	0	990000	0	700000	0
Drinking Water Non-Compliance (points)	0.33	5.6	72	2.2	75
SOCIOECONOMIC INDICATORS					
Demographic Index USA	3.23	N/A	N/A	1.34	97
Supplemental Demographic Index USA	2.4	N/A	N/A	1.64	87
Demographic Index State	3.61	2.16	96	N/A	N/A
Supplemental Demographic Index State	2.16	1.62	79	N/A	N/A
People of Color	98%	62%	94	40%	95
Low Income	71%	39%	90	30%	94
Unemployment Rate	9%	6%	74	6%	80
Limited English Speaking Households	8%	6%	75	5%	82
Less Than High School Education	21%	14%	76	11%	83
Under Age 5	7%	5%	71	5%	68
Over Age 64	9%	20%	18	18%	21

*Diesel particulate matter index is from the EPA's Air Toxics Data Update, which is the Agency's ongoing, comprehensive evaluation of air toxics in the United States. This effort aims to prioritize air toxics, emission sources, and locations of interest for further study. It is important to remember that the air toxics data presented here provide broad estimates of health risks over geographic areas of the country, not definitive risks to specific individuals or locations. More information on the Air Toxics Data Update can be found at: <https://www.epa.gov/haps/air-toxics-data-update>.

Sites reporting to EPA within defined area:

Superfund	0
Hazardous Waste, Treatment, Storage, and Disposal Facilities	0
Water Dischargers	43
Air Pollution	2
Brownfields	0
Toxic Release Inventory	0

Other community features within defined area:

Schools	1
Hospitals	0
Places of Worship	1

Other environmental data:

Air Non-attainment	No
Impaired Waters	Yes

Selected location contains American Indian Reservation Lands*	Yes
Selected location contains a "Justice40 (CEJST)" disadvantaged community	Yes
Selected location contains an EPA IRA disadvantaged community	Yes

*Report for 5 miles Ring Centered at 35.565675,-108.547191
 Report produced September 24, 2024 using EJScreen Version 2.3*

EJScreen Environmental and Socioeconomic Indicators Data

HEALTH INDICATORS

INDICATOR	VALUE	STATE AVERAGE	STATE PERCENTILE	US AVERAGE	US PERCENTILE
Low Life Expectancy	23%	19%	83	20%	81
Heart Disease	9.4	5.9	97	5.8	96
Asthma	16.3	11.2	99	10.3	99
Cancer	5.2	6.1	27	6.4	25
Persons with Disabilities	12.7%	17.1%	26	13.7%	49

CLIMATE INDICATORS

INDICATOR	VALUE	STATE AVERAGE	STATE PERCENTILE	US AVERAGE	US PERCENTILE
Flood Risk	6%	9%	55	12%	50
Wildfire Risk	1%	58%	29	14%	79

CRITICAL SERVICE GAPS

INDICATOR	VALUE	STATE AVERAGE	STATE PERCENTILE	US AVERAGE	US PERCENTILE
Broadband Internet	58%	20%	95	13%	99
Lack of Health Insurance	18%	10%	88	9%	90
Housing Burden	No	N/A	N/A	N/A	N/A
Transportation Access Burden	Yes	N/A	N/A	N/A	N/A
Food Desert	Yes	N/A	N/A	N/A	N/A

Report for 5 miles Ring Centered at 35.565675,-108.547191

Report produced September 24, 2024 using EJScreen Version 2.3

Location: User-specified point center at 35.565675, -108.547191
 Ring (buffer): 5-miles radius
 Description: Foutz No. 2 NM0148

Summary of ACS Estimates		2018 - 2022
Population		2,470
Population Density (per sq. mile)		34
People of Color Population		2,420
% People of Color Population		98%
Households		639
Housing Units		783
Housing Units Built Before 1950		14
Per Capita Income		N/A
Land Area (sq. miles) (Source: SF1)		72.95
% Land Area		100%
Water Area (sq. miles) (Source: SF1)		0.02
% Water Area		0%

	2018 - 2022 ACS Estimates	Percent	MOE (±)
Population by Race			
Total	2,470	100%	284
Population Reporting One Race	2,439	99%	559
White	50	2%	123
Black	6	0%	13
American Indian	2,382	96%	277
Asian	0	0%	13
Pacific Islander	0	0%	13
Some Other Race	0	0%	120
Population Reporting Two or More Races	31	1%	27
Total Hispanic Population	95	4%	163
Total Non-Hispanic Population	2,375		
White Alone	50	2%	123
Black Alone	6	0%	13
American Indian Alone	2,289	93%	261
Non-Hispanic Asian Alone	0	0%	13
Pacific Islander Alone	0	0%	13
Other Race Alone	0	0%	28
Two or More Races Alone	30	1%	27
Population by Sex			
Male	1,067	43%	162
Female	1,403	57%	201
Population by Age			
Age 0-4	166	7%	52
Age 0-17	709	29%	110
Age 18+	1,761	71%	181
Age 65+	223	9%	60

Data Note: Detail may not sum to totals due to rounding. Hispanic population can be of any race.

N/A means not available. **Source:** U.S. Census Bureau, American Community Survey (ACS) 2018 - 2022

Location: User-specified point center at 35.565675, -108.547191

Ring (buffer): 5-miles radius

Description: Foutz No. 2 NM0148

	2018 - 2022 ACS Estimates	Percent	MOE (±)
Population 25+ by Educational Attainment			
Total	1,481	100%	186
Less than 9th Grade	107	7%	40
9th - 12th Grade, No Diploma	208	14%	41
High School Graduate	533	36%	102
Some College, No Degree	357	24%	74
Associate Degree	139	9%	45
Bachelor's Degree or more	136	9%	109
Population Age 5+ Years by Ability to Speak English			
Total	2,304	100%	268
Speak only English	1,079	47%	172
Non-English at Home ¹⁺²⁺³⁺⁴	1,225	53%	215
¹ Speak English "very well"	1,006	44%	215
² Speak English "well"	150	7%	72
³ Speak English "not well"	49	2%	46
⁴ Speak English "not at all"	20	1%	45
³⁺⁴ Speak English "less than well"	69	3%	64
²⁺³⁺⁴ Speak English "less than very well"	219	10%	96
Limited English Speaking Households*			
Total	51	100%	29
Speak Spanish	0	0%	13
Speak Other Indo-European Languages	0	0%	13
Speak Asian-Pacific Island Languages	0	0%	13
Speak Other Languages	51	100%	19
Households by Household Income			
Household Income Base	639	100%	92
< \$15,000	191	30%	70
\$15,000 - \$25,000	74	12%	23
\$25,000 - \$50,000	114	18%	35
\$50,000 - \$75,000	79	12%	38
\$75,000 +	181	28%	106
Occupied Housing Units by Tenure			
Total	639	100%	92
Owner Occupied	452	71%	70
Renter Occupied	187	29%	94
Employed Population Age 16+ Years			
Total	1,827	100%	229
In Labor Force	867	47%	171
Civilian Unemployed in Labor Force	78	9%	44
Not In Labor Force	960	53%	133

Data Note: Detail may not sum to totals due to rounding. Hispanic population can be of anyrace.

N/A means not available. **Source:** U.S. Census Bureau, American Community Survey (ACS)

*Households in which no one 14 and over speaks English "very well" or speaks English only.

Location: User-specified point center at 35.565675, -108.547191

Ring (buffer): 5-miles radius

Description: Foutz No. 2 NM0148

	2018 - 2022 ACS Estimates	Percent	MOE (±)
Population by Language Spoken at Home*			
Total (persons age 5 and above)	1,246	100%	300
English	564	45%	257
Spanish	0	0%	13
French, Haitian, or Cajun	0	0%	13
German or other West Germanic	0	0%	13
Russian, Polish, or Other Slavic	0	0%	13
Other Indo-European	0	0%	13
Korean	0	0%	13
Chinese (including Mandarin, Cantonese)	0	0%	13
Vietnamese	0	0%	13
Tagalog (including Filipino)	0	0%	13
Other Asian and Pacific Island	0	0%	13
Arabic	0	0%	13
Other and Unspecified	682	55%	195
Total Non-English	682	55%	395

Data Note: Detail may not sum to totals due to rounding. Hispanic population can be of any race.
 N/A means not available. **Source:** U.S. Census Bureau, American Community Survey (ACS) 2018 - 2022.
 *Population by Language Spoken at Home is available at the census tract summary level and up.