



# EJScreen Community Report

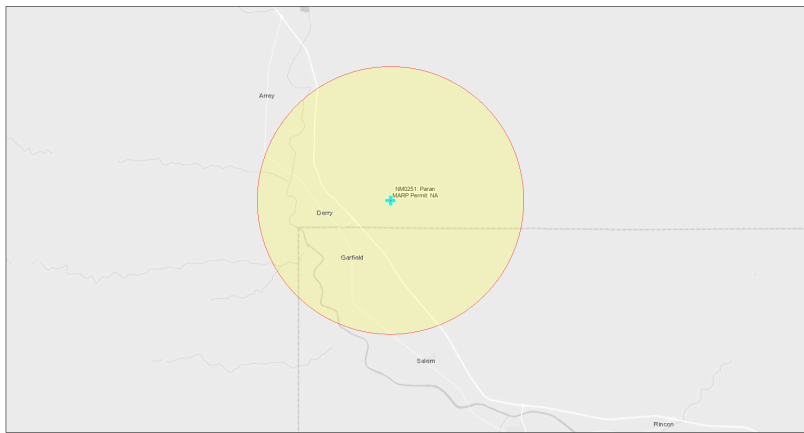
This report provides environmental and socioeconomic information for user-defined areas, and combines that data into environmental justice and supplemental indexes.

## Paran NM0251

5 miles Ring Centered at 32.794475,-107.240010

Population: 431

Area in square miles: 78.53



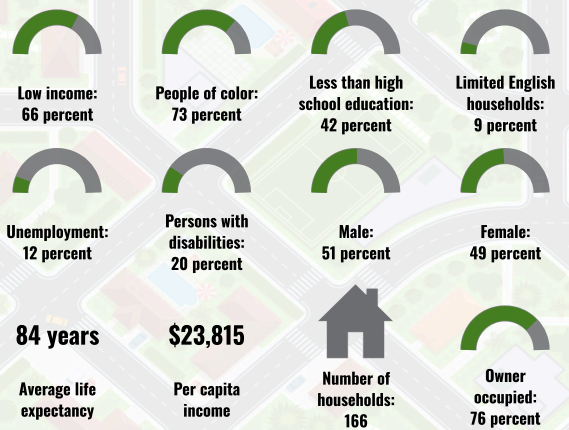
September 25, 2024

Paran NM0251

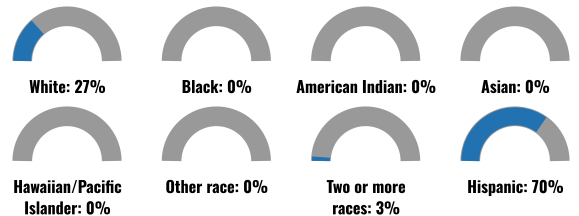
\* Abandoned Uranium Mines

1:144,448  
0 1.5 3 4.5 6 mi  
0 2.25 4.5 9 km  
New Mexico Energy, Minerals and Natural Resources Department, EPA, HERE, IHS, Data and Maps, Bureau of Land Management, EPA, HERE, Garmin, NOAA, EPA, USGS

### COMMUNITY INFORMATION



### BREAKDOWN BY RACE



### BREAKDOWN BY AGE



### LIMITED ENGLISH SPEAKING BREAKDOWN



Notes: Numbers may not sum to totals due to rounding. Hispanic population can be of any race. Source: U.S. Census Bureau, American Community Survey (ACS) 2018-2022. Life expectancy data comes from the Centers for Disease Control.

### LANGUAGES SPOKEN AT HOME

LANGUAGE	PERCENT
No language data available.	

Report for 5 miles Ring Centered at 32.794475,-107.240010

Report produced September 25, 2024 using EJScreen Version 2.3

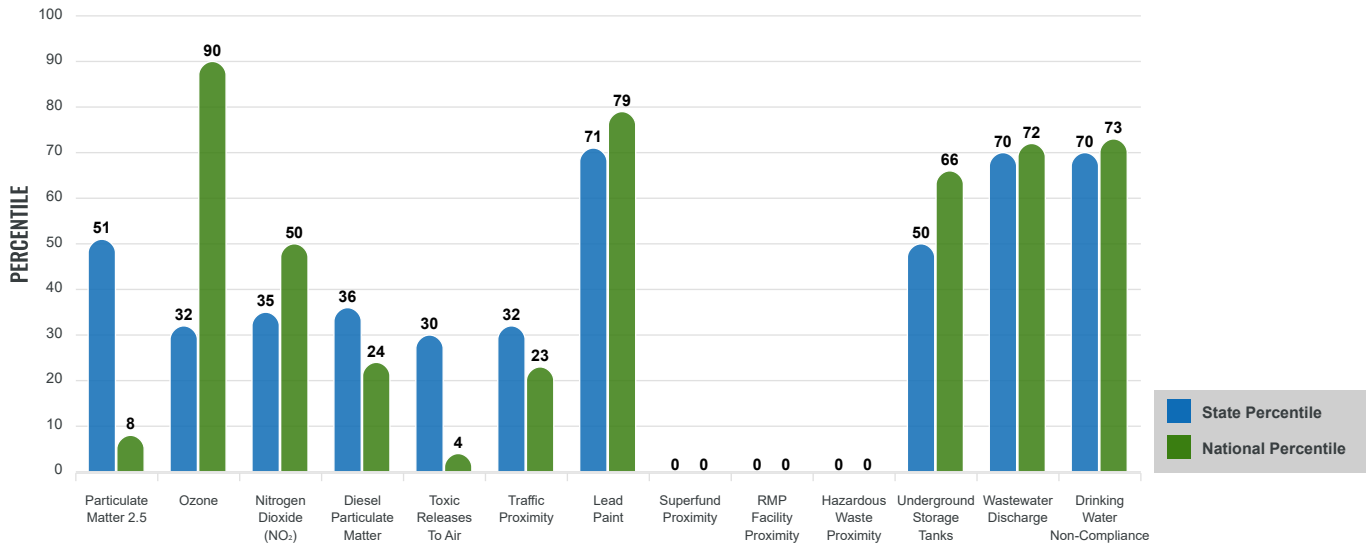
# Environmental Justice & Supplemental Indexes

The environmental justice and supplemental indexes are a combination of environmental and socioeconomic information. There are thirteen EJ indexes and supplemental indexes in EJScreen reflecting the 13 environmental indicators. The indexes for a selected area are compared to those for all other locations in the state or nation. For more information and calculation details on the EJ and supplemental indexes, please visit the [EJScreen website](#).

## EJ INDEXES

The EJ indexes help users screen for potential EJ concerns. To do this, the EJ index combines data on low income and people of color populations with a single environmental indicator.

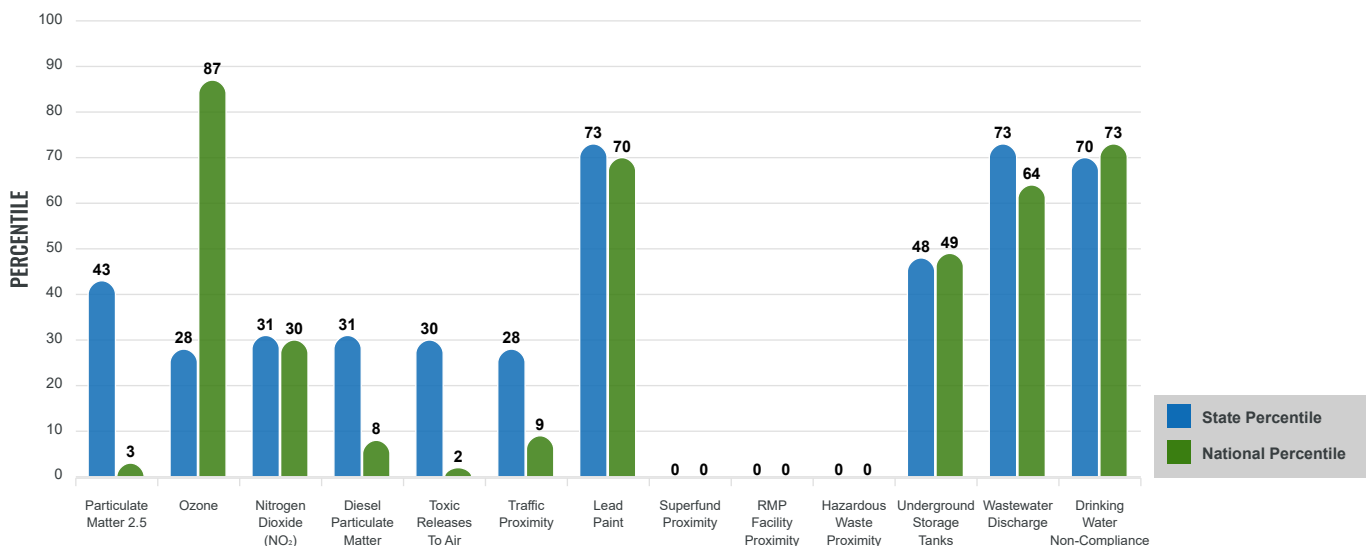
### EJ INDEXES FOR THE SELECTED LOCATION



## SUPPLEMENTAL INDEXES

The supplemental indexes offer a different perspective on community-level vulnerability. They combine data on percent low income, percent persons with disabilities, percent less than high school education, percent limited English speaking, and percent low life expectancy with a single environmental indicator.

### SUPPLEMENTAL INDEXES FOR THE SELECTED LOCATION



Report for 5 miles Ring Centered at 32.794475,-107.240010

Report produced September 25, 2024 using EJScreen Version 2.3

# EJScreen Environmental and Socioeconomic Indicators Data

SELECTED VARIABLES	VALUE	STATE AVERAGE	PERCENTILE IN STATE	USA AVERAGE	PERCENTILE IN USA
<b>ENVIRONMENTAL BURDEN INDICATORS</b>					
Particulate Matter 2.5 (µg/m <sup>3</sup> )	5.34	6.11	30	8.45	2
Ozone (ppb)	62.9	65.3	18	61.8	62
Nitrogen Dioxide (NO <sub>2</sub> ) (ppbv)	4.2	8.1	19	7.8	15
Diesel Particulate Matter (µg/m <sup>3</sup> )	0.0408	0.187	21	0.191	5
Toxic Releases to Air (toxicity-weighted concentration)	0.061	29	29	4,600	2
Traffic Proximity (daily traffic count/distance to road)	18,000	730,000	19	1,700,000	6
Lead Paint (% Pre-1960 Housing)	0.21	0.19	65	0.3	49
Superfund Proximity (site count/km distance)	0	0.34	0	0.39	0
RMP Facility Proximity (facility count/km distance)	0	0.2	0	0.57	0
Hazardous Waste Proximity (facility count/km distance)	0	1.2	0	3.5	0
Underground Storage Tanks (count/km <sup>2</sup> )	0.013	2.8	32	3.6	28
Wastewater Discharge (toxicity-weighted concentration/m distance)	320	990000	65	700000	65
Drinking Water Non-Compliance (points)	0.28	5.6	72	2.2	75
<b>SOCIOECONOMIC INDICATORS</b>					
Demographic Index USA	2.72	N/A	N/A	1.34	91
Supplemental Demographic Index USA	2.4	N/A	N/A	1.64	87
Demographic Index State	2.99	2.16	80	N/A	N/A
Supplemental Demographic Index State	2.04	1.62	74	N/A	N/A
People of Color	73%	62%	62	40%	79
Low Income	66%	39%	86	30%	92
Unemployment Rate	10%	6%	77	6%	82
Limited English Speaking Households	8%	6%	73	5%	81
Less Than High School Education	42%	14%	96	11%	97
Under Age 5	2%	5%	27	5%	21
Over Age 64	27%	20%	79	18%	84

\*Diesel particulate matter index is from the EPA's Air Toxics Data Update, which is the Agency's ongoing, comprehensive evaluation of air toxics in the United States. This effort aims to prioritize air toxics, emission sources, and locations of interest for further study. It is important to remember that the air toxics data presented here provide broad estimates of health risks over geographic areas of the country, not definitive risks to specific individuals or locations. More information on the Air Toxics Data Update can be found at: <https://www.epa.gov/haps/air-toxics-data-update>.

**Sites reporting to EPA within defined area:**

Superfund .....	0
Hazardous Waste, Treatment, Storage, and Disposal Facilities .....	0
Water Dischargers .....	5
Air Pollution .....	0
Brownfields .....	0
Toxic Release Inventory .....	0

**Other community features within defined area:**

Schools .....	1
Hospitals .....	0
Places of Worship .....	1

**Other environmental data:**

Air Non-attainment .....	No
Impaired Waters .....	Yes

Selected location contains American Indian Reservation Lands* .....	No
Selected location contains a "Justice40 (CEJST)" disadvantaged community .....	Yes
Selected location contains an EPA IRA disadvantaged community .....	Yes

Report for 5 miles Ring Centered at 32.794475,-107.240010  
 Report produced September 25, 2024 using EJScreen Version 2.3

## EJScreen Environmental and Socioeconomic Indicators Data

### HEALTH INDICATORS

INDICATOR	VALUE	STATE AVERAGE	STATE PERCENTILE	US AVERAGE	US PERCENTILE
Low Life Expectancy	11%	19%	1	20%	1
Heart Disease	8.3	5.9	93	5.8	91
Asthma	11.6	11.2	76	10.3	84
Cancer	6.2	6.1	55	6.4	44
Persons with Disabilities	20.1%	17.1%	71	13.7%	85

### CLIMATE INDICATORS

INDICATOR	VALUE	STATE AVERAGE	STATE PERCENTILE	US AVERAGE	US PERCENTILE
Flood Risk	8%	9%	63	12%	59
Wildfire Risk	27%	58%	34	14%	83

### CRITICAL SERVICE GAPS

INDICATOR	VALUE	STATE AVERAGE	STATE PERCENTILE	US AVERAGE	US PERCENTILE
Broadband Internet	38%	20%	86	13%	95
Lack of Health Insurance	7%	10%	42	9%	52
Housing Burden	No	N/A	N/A	N/A	N/A
Transportation Access Burden	Yes	N/A	N/A	N/A	N/A
Food Desert	Yes	N/A	N/A	N/A	N/A

Report for 5 miles Ring Centered at 32.794475,-107.240010

Report produced September 25, 2024 using EJScreen Version 2.3

Location: User-specified point center at 32.794475, -107.240010  
 Ring (buffer): 5-miles radius  
 Description: Paran NM0251

Summary of ACS Estimates		2018 - 2022
Population		431
Population Density (per sq. mile)		8
People of Color Population		317
% People of Color Population		73%
Households		166
Housing Units		231
Housing Units Built Before 1950		33
Per Capita Income		23,815
Land Area (sq. miles) (Source: SF1)		53.59
% Land Area		99%
Water Area (sq. miles) (Source: SF1)		0.74
% Water Area		1%

	2018 - 2022 ACS Estimates	Percent	MOE (±)
<b>Population by Race</b>			
Total	431	100%	612
Population Reporting One Race	405	94%	986
White	143	33%	310
Black	0	0%	13
American Indian	0	0%	13
Asian	0	0%	13
Pacific Islander	0	0%	13
Some Other Race	262	61%	624
Population Reporting Two or More Races	26	6%	173
Total Hispanic Population	303	70%	617
Total Non-Hispanic Population	128		
White Alone	115	27%	307
Black Alone	0	0%	13
American Indian Alone	0	0%	13
Non-Hispanic Asian Alone	0	0%	13
Pacific Islander Alone	0	0%	13
Other Race Alone	0	0%	13
Two or More Races Alone	13	3%	173
<b>Population by Sex</b>			
Male	219	51%	320
Female	212	49%	359
<b>Population by Age</b>			
Age 0-4	7	2%	84
Age 0-17	91	21%	205
Age 18+	340	79%	301
Age 65+	118	27%	235

**Data Note:** Detail may not sum to totals due to rounding. Hispanic population can be of any race.

N/A means not available. **Source:** U.S. Census Bureau, American Community Survey (ACS) 2018 - 2022

Location: User-specified point center at 32.794475, -107.240010  
 Ring (buffer): 5-miles radius  
 Description: Paran NM0251

	2018 - 2022 ACS Estimates	Percent	MOE (±)
<b>Population 25+ by Educational Attainment</b>			
Total	305	100%	335
Less than 9th Grade	91	30%	182
9th - 12th Grade, No Diploma	37	12%	119
High School Graduate	110	36%	156
Some College, No Degree	35	12%	145
Associate Degree	7	2%	75
Bachelor's Degree or more	25	8%	167
<b>Population Age 5+ Years by Ability to Speak English</b>			
Total	424	100%	596
Speak only English	131	31%	267
Non-English at Home <sup>1+2+3+4</sup>	294	69%	469
<sup>1</sup> Speak English "very well"	192	45%	349
<sup>2</sup> Speak English "well"	11	2%	79
<sup>3</sup> Speak English "not well"	13	3%	75
<sup>4</sup> Speak English "not at all"	79	19%	199
<sup>3+4</sup> Speak English "less than well"	91	22%	212
<sup>2+3+4</sup> Speak English "less than very well"	102	24%	226
<b>Limited English Speaking Households*</b>			
Total	15	100%	54
Speak Spanish	14	97%	49
Speak Other Indo-European Languages	0	3%	13
Speak Asian-Pacific Island Languages	0	0%	13
Speak Other Languages	0	0%	13
<b>Households by Household Income</b>			
Household Income Base	166	100%	189
< \$15,000	25	15%	123
\$15,000 - \$25,000	52	31%	138
\$25,000 - \$50,000	40	24%	109
\$50,000 - \$75,000	40	24%	96
\$75,000 +	9	5%	103
<b>Occupied Housing Units by Tenure</b>			
Total	166	100%	189
Owner Occupied	125	76%	167
Renter Occupied	40	24%	113
<b>Employed Population Age 16+ Years</b>			
Total	342	100%	419
In Labor Force	178	52%	316
Civilian Unemployed in Labor Force	22	12%	96
Not In Labor Force	165	48%	319

**Data Note:** Detail may not sum to totals due to rounding. Hispanic population can be of anyrace.

N/A means not available. **Source:** U.S. Census Bureau, American Community Survey (ACS)

\*Households in which no one 14 and over speaks English "very well" or speaks English only.

Location: User-specified point center at 32.794475, -107.240010  
 Ring (buffer): 5-miles radius  
 Description: Paran NM0251

	2018 - 2022 ACS Estimates	Percent	MOE (±)
<b>Population by Language Spoken at Home*</b>			
Total (persons age 5 and above)	N/A	N/A	N/A
English	N/A	N/A	N/A
Spanish	N/A	N/A	N/A
French, Haitian, or Cajun	N/A	N/A	N/A
German or other West Germanic	N/A	N/A	N/A
Russian, Polish, or Other Slavic	N/A	N/A	N/A
Other Indo-European	N/A	N/A	N/A
Korean	N/A	N/A	N/A
Chinese (including Mandarin, Cantonese)	N/A	N/A	N/A
Vietnamese	N/A	N/A	N/A
Tagalog (including Filipino)	N/A	N/A	N/A
Other Asian and Pacific Island	N/A	N/A	N/A
Arabic	N/A	N/A	N/A
Other and Unspecified	N/A	N/A	N/A
Total Non-English	N/A	N/A	N/A

**Data Note:** Detail may not sum to totals due to rounding. Hispanic population can be of any race.  
 N/A means not available. **Source:** U.S. Census Bureau, American Community Survey (ACS) 2018 - 2022.  
 \*Population by Language Spoken at Home is available at the census tract summary level and up.