

ABANDONED OR INACTIVE URANIUM
MINES IN NEW MEXICO

A report of investigation carried out
between August 1979 and May 1980 under
contract with the New Mexico Energy and
Minerals Department.

by

Orin J. Anderson

New Mexico Bureau of Mines and
Mineral Resources
Open-File Report 148

INTRODUCTION

During the course of this investigation approximately 200 uranium mine sites were visited. Although these sites are distributed throughout 20 counties the majority are in McKinley, San Juan, and Valencia Counties, along the western and southern margin of the San Juan Basin. Other counties with an appreciable number of sites are Grant, Rio Arriba, Sandoval, Sierra, and Socorro.

Field work commenced in August, 1979 and extended although not continuously, into May, 1980. Information obtained during the on-site visits included location, type and size of mine, condition of mine, host formation, dimensions of remaining structures, proximity to residences or villages, water quality data, and radiation levels, although a gamma ray scintillometer was not obtained for the project until October 20, 1979. An effort was made to contact landowners whenever and wherever possible, however, no systematic attempt was made to determine land and mineral ownership during this phase of the investigation.

Mine operation data has been included where available. This consists of information on ore grades, production history mineralogy, and mine operator. Old publications of the U.S. AEC and the State Mine Inspectors office were helpful in this area.

The mine reports are arranged alphabetically by county with each county having its own index. A NM- or AZ-mine identification number is given with each mine name in the index. It is an AML numbering system devised by Don Baker, Jr. The first part of this

identification number is based on a U.S. Soil Conservation Service numbering system of 15' quadrangles beginning with 1 in the northwest corner of the state to 24 in the northeast corner, then returning to the western border to start a new tier. The second part refers to a 7½' quad within the 15' quad; these are numbered counterclockwise from 1 in the NE quadrant to 4 in the SE. The last part of the number refers to a particular mine within the 7½' quad. An AZ- prefix indicates the 15' quadrangle is an Arizona quad that overlaps the New Mexico state boundary.

Acknowledgments - The writer wishes to thank the following people for their valuable assistance in the field: Lars (Skip) Skotte, Richard Chamberlin, JoAnne Osburn, Mary Ann Anderson, and Cheryl Kyllonen.

A special thanks is extended to Mr. William Chenoweth of the U.S. Department of Energy, both for his time in the field as well as the claim maps and A.E.C. mine production records he provided. Mr. John Blagbrough provided helpful information about the Chuska district. The editorial assistance of Wyatt Brewster and Lars (Skip) Skotte is gratefully acknowledged.

The help and cooperation of the Navajo Tribe Office in Window Rock, Arizona permitted a statewide investigation to be completed; a note of thanks goes to Mr. R. Zaman and Mr. William Armstrong of that office.

SANDOVAL COUNTY

Quad: Holy Ghost Spring 7½'

1. NM-129-2-1 Page 1
Collins (Warm Springs) (Goodner-Collins leases)

Quad: La Gotera 7½'

1. NM-152-3-1 Page 5
Dory (Dorie) Prospect
2. NM-152-3-2 Page 7
Betty (Betty Claims)

Quad: La Ventana 7½'

1. NM-105-3-1 Page 12
Butler Brothers
2. NM-105-3-2 Page 16/17
Rambler #2 Prospect

Quad: Regina 7½'

1. NM-81-2-1 . *found under Rio Arriba County; Quad: Regina
Whiteflow.. (Corral #3)
2. NM-81-2-2 Page 19/20
Sla-Tex Open Pit (Corral #3 Claim)

Date Visited 10/17/79

Mine name(s) Sla-Tex Open Pit (Corral #3 Claim)* County Sandoval

Section NE $\frac{1}{4}$ NE $\frac{1}{4}$ 25 Twنش. 23 N R. 1 W

Quadrangle Sheet Regina

Mining district Vegitas Cluster-Gallina

Elevation 8,180'

Nearest City and/or dwelling Gallina Plaza is 4 miles to the northeast.

To reach the workings, go west on New Mexico 96 from Gallina High School $1\frac{1}{2}$ miles. Then proceed south on a dirt road through Gallina Plaza and along the Rio Gallina for $2\frac{3}{4}$ miles to the intersection of Corral Canyon. Go west along Corral Canyon for 2 miles. The open pit is on the north side of the road.

The Sla-Tex consists of one open pit (photo a), trending east-west. It is 260' long, 60' wide on the west end, widening to 100' on the east end. It reaches a maximum depth of 40' on the north side of the pit. A dump lies due south of the pit (photo b), running the entire length of the pit, and spilling down onto the road below. An ore chute is on the east end of the dump (photo b). An ore stock pile is located on the southernmost edge of the pit (photo c), and according to Chenoweth (A.E.C., P.R.R.), the pile contains 125 tons, averaging .03% U_3O_8 . Scintillometer readings on the pile were 200 cps.

The pit exposes a sequence of gray, medium grained, micaceous sandstone of the Cutler Formation. The mineralization is associated with a light green/gray carbonaceous zone with abundant clay galls, and secondary calcium carbonate cement.

Twenty tons of ore was shipped in 1956, and assayed .03% U_3O_8 , .06% V_2O_5 , and 17.23% $CaCO_3$ (Chenoweth, A.E.C., P.R.R.).

* The Sla-Tex and Whiteflow deposits are both located in the Corral #3 claim (see attached map). The Sla-Tex is located in Sandoval County, and the Whiteflow in Rio Arriba.

- References:
- (1) Chenoweth, W. L., 1956, U.S. AEC Preliminary Reconnaissance Report on Sla-Tex Open Pit, file no. ED: R-610.
 - (2) Chenoweth, W. L., 1974, Uranium Occurrences of the Nacimiento-Jemez Region, Sandoval and Rio Arriba Counties, New Mexico, U.S. AEC, TM-194.
 - (3) Hilpert, L., 1969, Uranium Resources of NW New Mexico, U.S.G.S. Prof. Paper 603.



Photo (a) Looking west along the strike of the Sla-Tex pit.

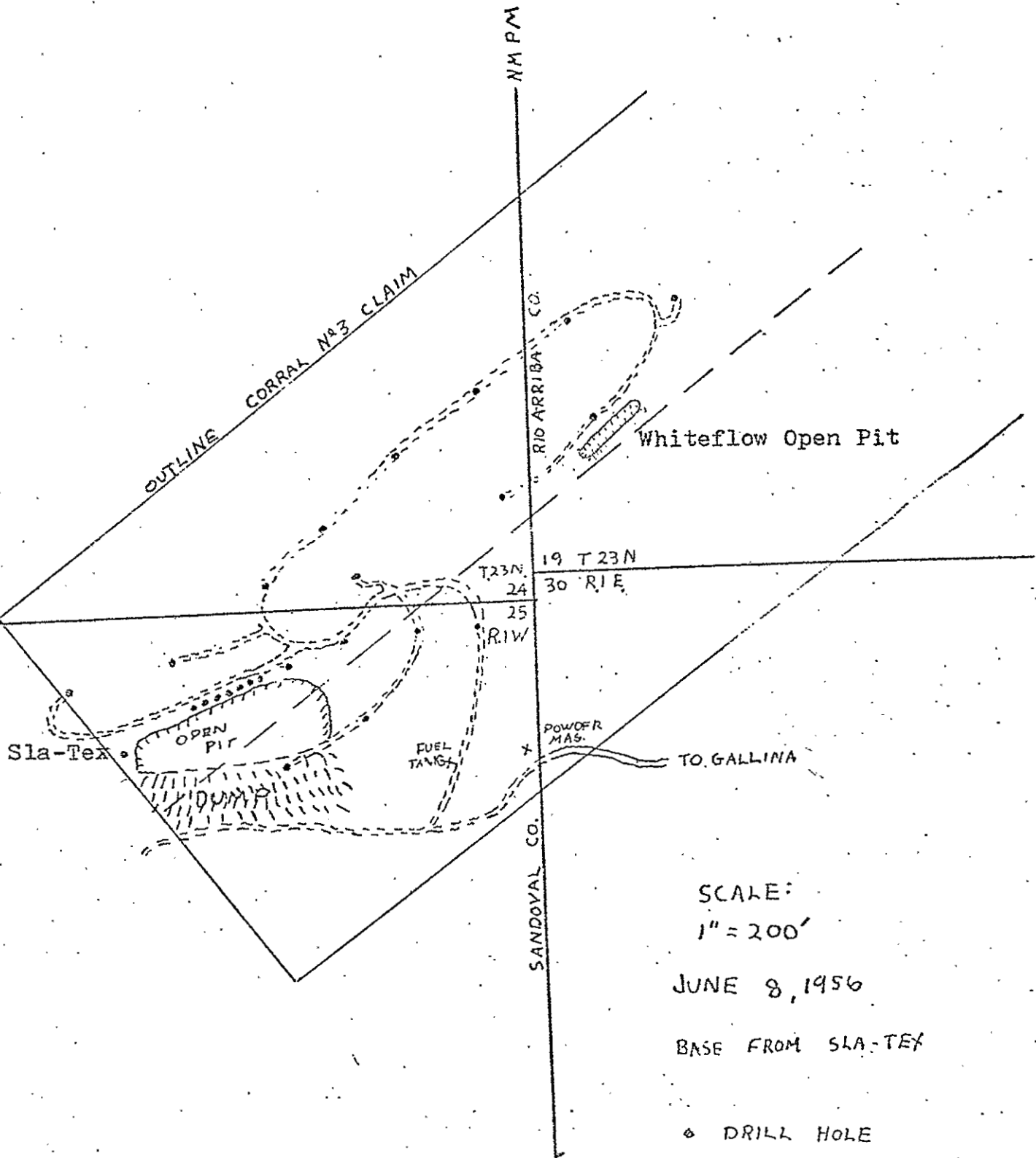


Photo (b) Looking NW at Sla-Tex dump. Note ore slot or chute on the right side of the dump.



Photo (c) Looking east at Sla-Tex pit. Note ore stock pile on right edge of photo.

Sla-Tex and Whiteflow open pits on the Corral #3 Claim



SCALE:
1" = 200'

JUNE 8, 1956

BASE FROM SLA-TEX

EL:R 613