



December 19, 2019

Ms. Susan von Gonten, Project Manager
New Mexico Environment Department
Petroleum Storage Tank Bureau
2905 Rodeo Park Drive
Santa Fe, New Mexico 87505

**RE: First Monthly NAPL Recovery Report,
Fairview Station Site, Española, New Mexico
Facility #28779 RID #4657 WPID #4096-1**

Dear Ms. von Gonten:

Souder, Miller & Associates (SMA) is pleased to submit the first monthly NAPL recovery report. This report is submitted in accordance with the workplan dated August 16, 2019 and approved by NMED PSTB on September 30, 2019.

On November 11, 2019, SMA performed the first monthly NAPL recovery. Seventeen monitoring wells were gauged for depth to NAPL and depth to water. Of these seventeen wells, ten monitoring wells contained NAPL with apparent thicknesses ranging from 1.06 to 5.22 feet. Two monitoring wells (MW-30 and MW-31) had poor NAPL/water signals possibly due to emulsified NAPL in the water. The NAPL thickness measurements in these wells may be inaccurate.

After depth to NAPL/water measurements were recorded, NAPL was removed from the wells using an electric NAPL recovery pump and/or hand bailing. The depths to NAPL/water were measured after NAPL was recovered to an approximate minimum thickness. The amounts of NAPL recovered from the monitoring wells ranged from 1.0 to 4.7 gallons per well. The total amount of NAPL recovered from the ten monitoring wells was 24.1 gallons. To date, approximately 300 gallons of NAPL have been removed from the site.

Figure 1 depicts the apparent NAPL thicknesses and NAPL contours during the November 2019 event. Table 1 presents the initial depth to NAPL and water measurements. Table 2 depicts the NAPL thicknesses before and after recovery with the NAPL amounts recovered.

Ms. Susan von Gonten
December 20, 2019

If you have any questions, please do not hesitate to call me at 505-473-9211 or e-mail me at alan.eschenbacher@soudermiller.com.

Sincerely,
SOUDER, MILLER & ASSOCIATES



Alan Eschenbacher, P.G.
Senior Geoscientist

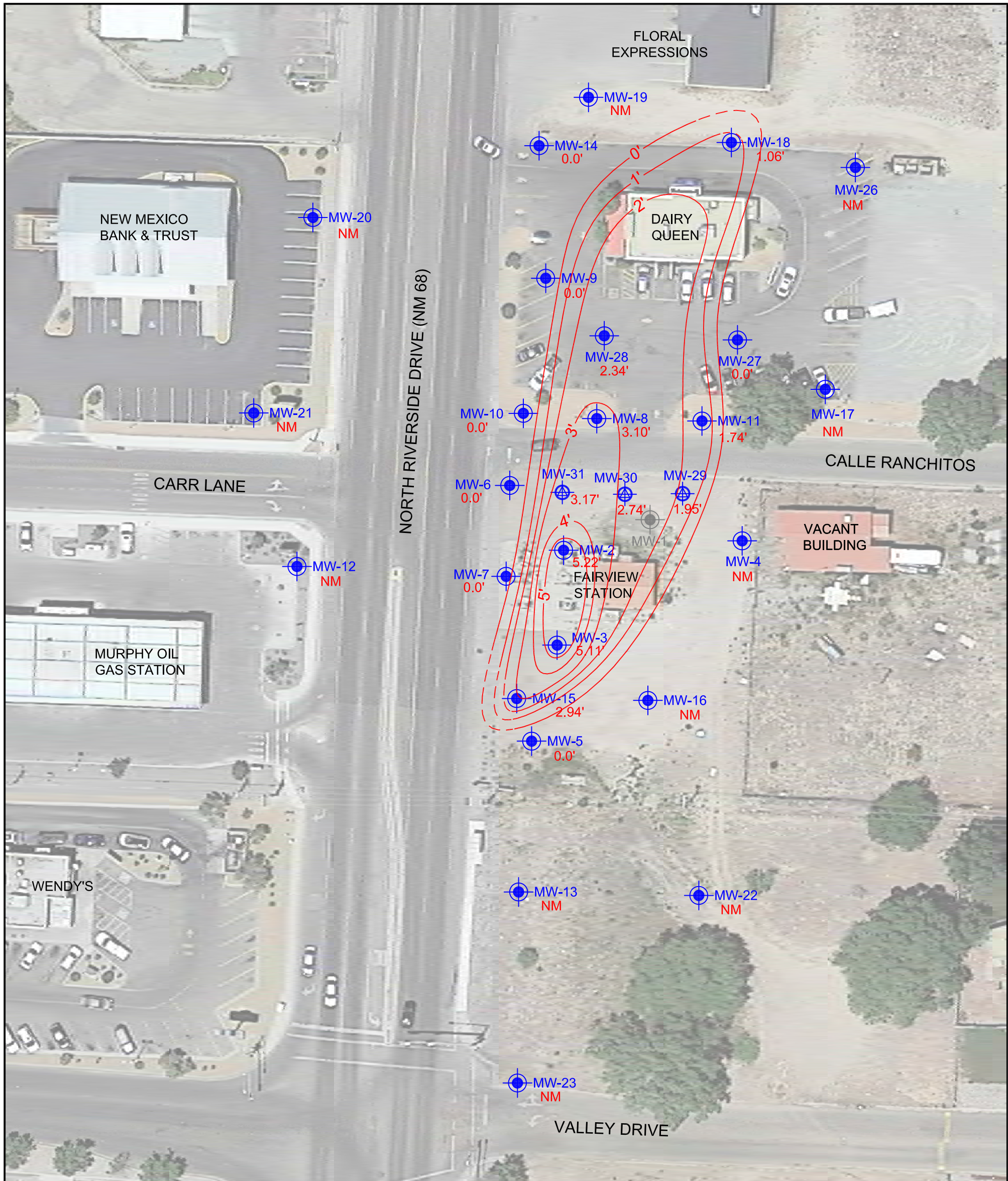
enclosures

Figure 1 – Non-Aqueous Phase Liquid Map – November 11, 2019

Table 1 – Summary of Fluid Gauging Data

Table 2 – Summary of NAPL Recovery

Field Notes



LEGEND

- MW-7 2" MONITORING WELL
- MW-30 4" MONITORING WELL
- 2.89' NAPL APPARENT THICKNESS IN FEET
- 3' NAPL APPARENT THICKNESS CONTOUR IN FEET
- NM NOT MEASURED



SOUDER, MILLER & ASSOCIATES
 2904 Rodeo Park Drive East, Bldg 100
 Santa Fe, NM 87505
 Phone (505) 473-9211 Toll-Free (800) 460-5366 Fax (505) 471-6675
 www.soudermiller.com
 Serving the Southwest & Rocky Mountains
 Albuquerque, Carlsbad, Farmington, Hobbs, Las Cruces, Roswell, Santa Fe, NM
 Cortez, Grand Junction, CO - Safford, AZ - Moab, UT - El Paso, TX

NON-AQUEOUS PHASE LIQUID MAP - NOVEMBER 11, 2019
FAIRVIEW STATION
ESPAÑOLA, NEW MEXICO

Designed AJE	Drawn AJE	Checked SAM
Date: November, 2019		
Scale: Horiz: 1" = 50'		
Vert: N/A		
Project No:		
Sheet: Figure 1		

THIS DRAWING IS INCOMPLETE AND NOT TO BE USED FOR CONSTRUCTION UNLESS IT IS STAMPED, SIGNED AND DATED

**TABLE 1. SUMMARY OF FLUID GAUGING DATA
FAIRVIEW STATION, ESPANOLA, NEW MEXICO**

Monitoring Well	Date	Casing Elevation	Depth to NAPL (feet)	NAPL Thickness (feet)	Depth to Water (feet)	Groundwater Elevation (feet)
MW-1	02/27/13	5621.88	14.06	0.34	14.40	5607.74
	06/03/13		13.92	0.28	14.20	5607.89
	06/27/13		14.43	0.37	14.80	5607.36
	07/10/13		14.21	0.24	14.45	5607.61
	10/29/13		13.36	1.89	15.25	5608.05
	11/12/13		15.37	0.46	15.83	5606.40
	11/26/13		13.82	1.08	14.90	5607.79
	10/03/14		14.81	0.04	14.85	5607.06
	12/10/14		15.51	3.20	18.71	5605.57
	01/09/15		14.20	3.49	17.69	5606.81
	01/19/16		13.84	3.93	17.77	5607.06
	07/14/16		14.45	4.70	19.15	5606.26
	07/22/16		15.61	2.45	18.06	5605.66
	11/03/16		14.83	2.40	17.23	5606.45
	07/06/17		15.22	4.07	19.29	5605.64
			03/15/19		Well not found - possibly destroyed	
MW-2	02/27/13	5622.248	13.11	5.45	18.56	5607.78
	06/03/13		13.42	3.97	17.39	5607.84
	06/27/13		13.98	4.22	18.20	5607.21
	07/10/13		13.67	3.83	17.50	5607.62
	10/29/13		12.66	6.02	18.68	5608.08
	11/12/13		14.34	5.06	19.40	5606.64
	11/26/13		12.95	5.61	18.56	5607.90
	10/03/14		14.97	0.08	15.05	5607.26
	12/10/14		15.77	2.87	18.64	5605.76
	01/09/15		14.99	3.74	18.73	5606.32
	01/19/16		14.45	3.60	18.05	5606.90
	07/14/16		15.23	3.88	19.11	5606.05
	07/22/16		14.91	3.57	18.48	5606.45
	11/03/16		15.23	2.52	17.75	5606.39
	07/06/17		16.21	2.85	19.06	5605.33
			03/15/19		15.83	3.46
	03/19/19		14.55	4.60	19.15	5606.55
	11/11/19		13.61	5.22	18.83	5607.33

**TABLE 1. SUMMARY OF FLUID GAUGING DATA
FAIRVIEW STATION, ESPANOLA, NEW MEXICO**

Monitoring Well	Date	Casing Elevation	Depth to NAPL (feet)	NAPL Thickness (feet)	Depth to Water (feet)	Groundwater Elevation (feet)
MW-3	02/27/13	5622.241	13.80	2.89	16.69	5607.72
	06/03/13		13.46	4.11	17.57	5607.75
	06/27/13		13.88	4.45	18.33	5607.25
	07/10/13		13.70	3.98	17.68	5607.55
	10/29/13		12.50	6.96	19.46	5608.00
	11/12/13		13.19	7.43	20.62	5607.19
	11/26/13		13.02	6.00	19.02	5607.72
	10/03/14		13.96	2.95	16.91	5607.54
	12/10/14		14.75	7.51	22.26	5605.61
	01/09/15		13.72	6.90	20.62	5606.80
	01/19/16		12.69	5.91	18.60	5608.07
	07/14/16		14.23	7.95	22.18	5606.02
	07/22/16		14.60	6.48	21.08	5606.02
	11/03/16		16.29	0.49	16.78	5605.83
	07/06/17		15.70	3.23	18.93	5605.73
	03/15/19		15.70	5.03	20.73	5605.28
03/19/19	15.55	5.18	20.73	5605.40		
11/11/19	13.54	5.11	18.65	5607.42		
MW-4	10/29/13	5622.812	-	-	14.13	5608.68
	11/12/13		-	-	15.12	5607.69
	11/26/13		-	-	15.20	5607.61
	10/03/14		-	-	16.21	5606.60
	01/09/15		-	-	15.88	5606.93
	01/19/16		-	-	14.33	5608.48
	07/14/16		-	-	14.89	5607.92
	07/22/16		-	-	15.10	5607.71
	11/03/16		-	-	16.25	5606.56
	12/21/16		-	-	15.50	5607.31
	07/06/17		-	-	17.34	5605.47
	03/15/19		-	-	15.75	5607.06
MW-5	10/29/13	5621.609	-	-	13.77	5607.84
	11/12/13		-	-	13.93	5607.68
	11/26/13		-	-	14.07	5607.54
	10/03/14		-	-	14.48	5607.13
	01/09/15		-	-	14.40	5607.21
	01/19/16		-	-	13.62	5607.99
	07/14/16		-	-	14.17	5607.44
	07/22/16		-	-	14.87	5606.74
	11/03/16		-	-	14.86	5606.75
	12/21/16		-	-	14.93	5606.68
	07/06/17		-	-	16.38	5605.23
	03/15/19		-	-	15.12	5606.49
	11/11/19		-	-	14.10	5607.51

**TABLE 1. SUMMARY OF FLUID GAUGING DATA
FAIRVIEW STATION, ESPANOLA, NEW MEXICO**

Monitoring Well	Date	Casing Elevation	Depth to NAPL (feet)	NAPL Thickness (feet)	Depth to Water (feet)	Groundwater Elevation (feet)
MW-6	10/29/13	5622.01	-	-	13.97	5608.04
	11/12/13		14.39	0.01	14.40	5607.61
	11/26/13		14.31	0.02	14.33	5607.68
	10/03/14		15.60	0.05	15.65	5606.36
	12/10/14		16.20	0.34	16.54	5605.47
	01/09/15		15.58	0.04	15.62	5606.39
	01/19/16		14.99	0.04	15.03	5606.98
	07/14/16		14.34	0.03	14.37	5607.64
	07/22/16		-	-	16.33	5605.68
	11/03/16		15.67	0.01	15.68	5606.34
	07/06/17		-	-	16.59	5605.42
	03/15/19		-	-	15.53	5606.48
	11/11/19		-	-	14.49	5607.52
MW-7	10/29/13	5622.09	-	-	14.17	5607.92
	11/12/13		-	-	14.62	5607.47
	11/26/13		-	-	14.50	5607.59
	10/03/14		-	-	15.84	5606.25
	01/09/15		-	-	15.25	5606.84
	01/19/16		-	-	14.00	5608.09
	07/14/16		-	-	14.52	5607.57
	07/22/16		-	-	16.09	5606.00
	11/03/16		-	-	15.77	5606.32
	12/21/16		-	-	15.13	5606.96
	07/06/17		-	-	17.03	5605.06
	03/15/19		-	-	15.78	5606.31
	11/11/19		-	-	14.81	5607.28
MW-8	10/29/13	5623.10	13.80	3.55	17.35	5608.42
	11/12/13		14.49	6.54	21.03	5606.98
	11/26/13		14.05	4.25	18.30	5607.99
	10/03/14		14.95	2.57	17.52	5607.51
	12/10/14		15.27	6.51	21.78	5606.21
	01/09/15		15.00	6.45	21.45	5606.49
	01/19/16		14.34	4.44	18.78	5607.65
	07/14/16		15.15	6.31	21.46	5606.38
	07/22/16		15.98	6.72	22.70	5605.44
	11/03/16		15.33	5.21	20.54	5606.47
	07/06/17		16.79	4.52	21.31	5605.18
	03/15/19		16.29	3.98	20.27	5605.82
	03/19/19		16.30	4.45	20.75	5605.69
11/11/19	14.95	3.10	18.05	5607.38		

**TABLE 1. SUMMARY OF FLUID GAUGING DATA
FAIRVIEW STATION, ESPANOLA, NEW MEXICO**

Monitoring Well	Date	Casing Elevation	Depth to NAPL (feet)	NAPL Thickness (feet)	Depth to Water (feet)	Groundwater Elevation (feet)
MW-9	10/03/14	5623.105	-	-	16.69	5606.42
	12/10/14		-	-	17.15	5605.96
	01/09/15		-	-	16.46	5606.65
	01/19/16		14.65	0.63	15.28	5608.30
	07/14/16		15.13	0.63	15.76	5607.82
	07/22/16		16.92	0.52	17.44	5606.06
	11/03/16		16.09	0.01	16.10	5607.01
	07/06/17		17.78	0.33	18.11	5605.24
	03/15/19		17.23	0.13	17.36	5605.84
	11/11/19		-	-	15.65	5607.46
MW-10	10/03/14	5623.073	-	-	16.78	5606.29
	01/09/15		-	-	16.28	5606.79
	01/19/16		Sheen	-	14.89	5608.18
	07/14/16		15.37	0.01	15.38	5607.69
	07/22/16		-	-	17.22	5605.85
	11/03/16		16.23	0.01	16.24	5606.84
	07/06/17		17.93	0.01	17.94	5605.14
	03/15/19		-	-	17.34	5605.73
	05/09/19		-	-	16.73	5606.34
	11/11/19		-	-	15.72	5607.35
MW-11	10/03/14	5623.36	15.55	0.16	15.71	5607.77
	12/10/14		16.52	3.63	20.15	5605.94
	01/09/15		15.89	3.36	19.25	5606.63
	01/19/16		15.47	3.66	19.13	5606.98
	07/14/16		16.01	3.09	19.10	5606.58
	07/22/16		17.20	1.50	18.70	5605.79
	11/03/16		16.85	1.21	18.06	5606.21
	07/06/17		17.47	2.35	19.82	5605.31
	03/15/19		17.15	1.93	19.08	5605.73
	03/19/19		17.11	1.77	18.88	5605.81
11/11/19	15.35	1.74	17.09	5607.58		
MW-12	10/03/14	5622.05	-	-	15.52	5606.53
	12/09/14		-	-	15.94	5606.11
	01/09/15		-	-	15.21	5606.84
	01/19/16		-	-	NM	NM
	07/14/16		-	-	NM	NM
	07/22/16		-	-	NM	NM
	11/03/16		-	-	NM	NM
	12/21/16		-	-	NM	NM
	07/06/17		-	-	NM	NM
	03/15/19		-	-	NM	NM

**TABLE 1. SUMMARY OF FLUID GAUGING DATA
FAIRVIEW STATION, ESPANOLA, NEW MEXICO**

Monitoring Well	Date	Casing Elevation	Depth to NAPL (feet)	NAPL Thickness (feet)	Depth to Water (feet)	Groundwater Elevation (feet)
MW-13	10/03/14	5621.52	-	-	14.81	5606.71
	01/09/15		-	-	14.76	5606.76
	01/19/16		-	-	NM	NM
	07/14/16		-	-	14.24	5607.28
	07/22/16		-	-	14.46	5607.06
	11/03/16		-	-	14.57	5606.95
	12/21/16		-	-	14.87	5606.65
	07/06/17		-	-	16.61	5604.91
	03/15/19		-	-	15.13	5606.39
MW-14	10/03/14	5622.97	15.76	0.29	16.05	5607.13
	12/10/14		16.38	2.19	18.57	5606.04
	01/09/15		15.96	0.49	16.45	5606.88
	01/19/16		14.40	0.79	15.19	5608.37
	07/14/16		15.23	0.47	15.70	5607.62
	07/22/16		16.68	0.38	17.06	5606.19
	11/03/16		15.90	0.10	16.00	5607.04
	07/06/17		17.46	0.67	18.13	5605.34
	03/15/19		16.68	0.96	17.64	5606.05
	11/11/19		-	-	15.45	5607.52
MW-15	07/14/16	5622.104	14.35	1.59	15.94	5607.36
	07/22/16		15.11	3.44	18.55	5606.13
	11/03/16		15.64	0.01	15.65	5606.46
	07/06/17		16.10	1.21	17.31	5605.70
	03/15/19		15.49	5.14	20.63	5605.33
	03/19/19		15.88	1.61	17.49	5605.82
	11/11/19		13.50	2.94	16.44	5607.87
MW-16	07/14/16	5622.15	-	-	14.54	5607.61
	07/22/16		-	-	15.36	5606.79
	11/03/16		-	-	15.35	5606.80
	12/21/16		-	-	15.17	5606.98
	07/06/17		-	-	16.98	5605.17
	03/15/19		-	-	15.40	5606.75

**TABLE 1. SUMMARY OF FLUID GAUGING DATA
FAIRVIEW STATION, ESPANOLA, NEW MEXICO**

Monitoring Well	Date	Casing Elevation	Depth to NAPL (feet)	NAPL Thickness (feet)	Depth to Water (feet)	Groundwater Elevation (feet)
MW-17	07/14/16	5623.46	-	-	15.20	5608.26
	07/22/16		-	-	16.58	5606.88
	11/03/16		-	-	16.37	5607.09
	12/21/16		-	-	15.84	5607.62
	07/06/17		-	-	17.69	5605.77
	03/15/19		-	-	16.04	5607.42
	05/09/19		-	-	16.38	5607.08
MW-18	07/14/16	5623.49	-	-	15.36	5608.13
	07/22/16		16.58	0.01	16.59	5606.90
	11/03/16		16.10	0.01	16.11	5607.38
	07/06/17		18.05	0.19	18.24	5605.39
	03/15/19		16.50	2.70	19.20	5606.31
	11/11/19		15.46	1.06	16.52	5607.76
MW-19	07/14/16	5623.58	-	-	15.80	5607.78
	07/22/16		-	-	16.84	5606.74
	11/03/16		-	-	15.94	5607.64
	12/21/16		-	-	16.17	5607.41
	07/06/17		-	-	17.92	5605.66
	03/15/19		-	-	16.34	5607.24
	05/09/19		-	-	15.07	5608.51
MW-20	07/14/16	5623.18	-	-	15.29	5607.89
	07/22/16		-	-	15.31	5607.87
	11/03/16		-	-	15.00	5608.18
	12/21/16		-	-	15.56	5607.62
	07/06/17		-	-	16.38	5606.80
	03/15/19		-	-	16.67	5606.51

**TABLE 1. SUMMARY OF FLUID GAUGING DATA
FAIRVIEW STATION, ESPANOLA, NEW MEXICO**

Monitoring Well	Date	Casing Elevation	Depth to NAPL (feet)	NAPL Thickness (feet)	Depth to Water (feet)	Groundwater Elevation (feet)
MW-21	<i>07/14/16</i>	5622.16	-	-	<i>15.47</i>	<i>5606.69</i>
	<i>07/22/16</i>		-	-	<i>15.36</i>	<i>5606.80</i>
	<i>11/03/16</i>		-	-	<i>15.59</i>	<i>5606.57</i>
	<i>12/21/16</i>		-	-	<i>15.68</i>	<i>5606.48</i>
	<i>07/06/17</i>		-	-	<i>16.88</i>	<i>5605.28</i>
	<i>03/15/19</i>		-	-	15.66	5606.50
MW-22	03/15/19	5622.00	-	-	15.46	5606.54
MW-23	03/15/19	5622.19	-	-	15.93	5606.26
MW-24	03/15/19		Installation pending access			
MW-25	03/15/19		Installation pending access			
MW-26	03/15/19	5623.98	-	-	16.42	5607.56
MW-27	03/15/19	5622.82	-	-	16.39	5606.43
	05/09/19		-	-	15.07	5607.75
	11/11/19		-	-	15.12	5607.70
MW-28	03/15/19	5622.75	15.43	3.91	19.34	5606.34
	11/11/19		14.62	2.34	16.96	5607.55
MW-29	03/22/19	5622.37	15.15	0.09	15.24	5607.20
	05/09/19		15.30	1.71	17.01	5606.64
	11/11/19		14.40	1.95	16.35	5607.48
MW-30	03/22/19	5621.87	13.73	4.88	18.61	5606.92
	11/11/19		13.26	2.74	16.00	5607.93
MW-31	03/22/19	5621.95	-	-	15.27	5606.68
	05/09/19		15.53	3.24	18.77	5605.61
	11/11/19		13.63	3.17	16.80	5607.53

NOTES:

Data collected before 2018 (in italics) collected by previous consultants.

RED = Indicates measurement taken after skimmer or sock removed; measurement not representative

NAPL = Nonaquious phase liquid

NA = Not applicable

NM = Not measured

**TABLE 2. SUMMARY OF NAPL RECOVERY
FAIRVIEW STATION, ESPANOLA, NEW MEXICO**

Monitor Well	Date Recovered	NAPL Thickness Prior to Bailing ¹	NAPL Thickness After Bailing ¹	Total NAPL Recovered ²	Comments
MW-1	02/01/13	NM	NM	0.00	
	02/04/13	NM	NM	0.00	
	02/27/13	0.34	NM	0.00	
	06/03/13	0.28	NM	0.50	
	06/27/13	0.37	NM	0.10	
	07/10/13	0.24	NM	0.00	
	10/29/13	1.89	NM	1.50	
	11/12/13	0.46	NM	0.30	
	11/26/13	1.08	NM	0.30	
	10/03/14	0.04	NM	0.00	
	12/10/14	3.20	NM	NM	
	01/09/15	3.49	NM	NM	
	01/19/16	3.93	1.21	4.50	
	07/14/16	4.70	0.01	3.25	set skimmer
	07/22/16	2.45	1.55	3.25	skimmer 1/2 full
	07/28/16	4.55	0.16	3.00	skimmer 1/2 full
	08/04/16	4.87	0.94	5.00	skimmer 1/2 full
	08/11/16	4.75	0.80	4.00	skimmer 1/2 full
	08/18/16	4.80	0.75	3.50	skimmer 1/2 full
	08/31/16	4.48	0.05	3.00	skimmer 1/2 full
09/15/16	3.68	0.01	1.50	skimmer 1/2 full	
09/22/16	0.83	0.11	0.75	skimmer 1/2 full	
10/06/16	2.34	0.01	1.25	skimmer 1/2 full	
10/21/16	1.12	0.27	0.75	skimmer 1/2 full	
11/03/16	2.40	0.10	1.50	skimmer 1/2 full	
07/06/17	4.07	2.31	7.50	skimmer 3/4 full; ~3 inches water	
03/15/19	Well not found - presumed destroyed				
MW-2	02/01/13	NM	NM	4.50	
	02/04/13	NM	NM	5.00	
	02/27/13	5.45	NM	0.00	
	06/03/13	3.97	NM	4.50	
	06/27/13	4.22	NM	3.00	
	07/10/13	3.83	NM	2.50	
	10/29/13	6.02	NM	3.50	
	11/12/13	5.06	NM	2.80	
	11/26/13	5.61	NM	3.00	
	10/03/14	0.08	NM	0.00	
	12/10/14	2.87	NM	NM	
	01/09/15	3.74	NM	NM	
	01/19/16	3.60	0.85	3.75	
	07/14/16	3.88	0.01	2.75	set skimmer
	07/22/16	3.57	0.06	2.50	skimmer full
	07/28/16	3.59	0.18	2.25	skimmer full
	08/04/16	3.00	0.36	3.00	skimmer full
	08/11/16	3.41	0.27	3.00	skimmer full
	08/18/16	3.07	0.38	3.00	skimmer full
	08/31/16	5.36	0.26	2.50	skimmer full
	09/15/16	5.30	0.24	3.00	skimmer full
	09/22/16	3.88	0.26	2.25	skimmer full
10/06/16	4.30	0.20	2.50	skimmer full	
10/21/16	2.94	0.01	2.25	skimmer 1/2 full	
11/03/16	2.52	0.15	2.00	skimmer full	
07/06/17	2.85	0.35	2.00	skimmer full; 1/4 NAPL, 3/4 water, soaked filter in NAPL	
03/15/19	3.46	0.88	5.25	skimmer full; 1/5 NAPL, 4/5 water	
03/19/19	4.60	0.70	5.5	skimmer full	
11/11/19	5.22	0.77	3.1	skimmer nearly full, poor interface	

**TABLE 2. SUMMARY OF NAPL RECOVERY
FAIRVIEW STATION, ESPANOLA, NEW MEXICO**

Monitor Well	Date Recovered	NAPL Thickness Prior to Bailing ¹	NAPL Thickness After Bailing ¹	Total NAPL Recovered ²	Comments
MW-3	02/01/13	NM	NM	0.50	
	02/04/13	NM	NM	2.00	
	02/27/13	2.89	NM	0.00	
	06/03/13	4.11	NM	4.50	
	06/27/13	4.45	NM	3.50	
	07/10/13	3.98	NM	3.00	
	10/29/13	6.96	NM	7.00	
	11/12/13	7.43	NM	5.00	
	11/26/13	6.00	NM	4.30	
	10/03/14	2.95	NM	0.00	
	12/10/14	7.51	NM	NM	
	01/09/15	6.90	NM	NM	
	01/19/16	5.91	1.10	5.00	
	07/14/16	7.95	0.01	5.50	set skimmer
	07/22/16	6.48	0.15	5.50	skimmer full of water only
	07/28/16	6.41	0.17	3.00	skimmer full of water only; soaked filter in NAPL
	08/04/16	3.57	0.47	3.00	skimmer full of water only; replaced skimmer with skimmer from MW-11
	08/11/16	3.10	0.28	3.00	skimmer full
	08/18/16	2.78	0.20	2.50	skimmer full
	08/31/16	3.12	0.13	2.25	skimmer full
	09/15/16	3.82	0.24	2.50	skimmer full
	09/22/16	1.81	0.07	1.25	skimmer full
	10/06/16	1.49	0.11	1.00	skimmer full
	10/21/16	0.70	0.01	0.50	skimmer 1/3 full
	11/03/16	0.49	0.10	0.25	skimmer 1/2 full
07/06/17	3.23	0.01	1.50	skimmer full	
03/15/19	5.03	0.08	2.75	skimmer full	
03/19/19	5.18	0.17	2.0	skimmer full	
11/11/19	5.11	0.34	2.2	skimmer full, bailed	
MW-6	10/29/13	-	-	0.00	
	11/12/13	0.01	NM	0.00	
	11/26/13	0.02	NM	0.00	
	10/03/14	0.05	NM	0.00	
	12/10/14	0.34	NM	0.00	
	01/09/15	0.04	NM	0.00	
	01/19/16	0.04	0.00	negligible	
	07/14/16	0.03	0.00	negligible	set new sock
	07/22/16	0.00	-	0.01	2 inches of staining; set new sock
	07/28/16	0.00	-	0.00	no staining; reset same sock
	08/04/16	0.00	-	0.08	16 inches of staining; set new sock
	08/11/16	0.00	-	0.08	16 inches of staining; set new sock
	08/18/16	0.01	-	0.08	16 inches of staining; set new sock
	08/31/16	0.01	-	0.07	14 inches of staining; set new sock
	09/15/16	0.00	-	0.06	11 inches of staining; set new sock
	09/22/16	0.01	-	0.00	no staining; reset same sock
	10/06/16	0.01	-	0.04	8 inches of staining; set new sock
	10/21/16	0.00	-	0.01	1 inch of staining; set new sock
11/03/16	0.01	-	0.06	12 inchs of staining; set new sock	
07/06/17	-	-	0.1	20 inchs of staining; set new sock	
03/15/19	0.00	-	0.0	removed sock	

**TABLE 2. SUMMARY OF NAPL RECOVERY
FAIRVIEW STATION, ESPANOLA, NEW MEXICO**

Monitor Well	Date Recovered	NAPL Thickness Prior to Bailing ¹	NAPL Thickness After Bailing ¹	Total NAPL Recovered ²	Comments
MW-8	10/29/13	3.55	NM	2.50	
	11/12/13	6.54	NM	3.00	
	11/26/13	4.25	NM	3.50	
	10/03/14	2.57	NM	0.00	
	12/10/14	6.51	NM	NM	
	01/09/15	6.45	NM	NM	
	01/19/16	4.44	0.55	3.25	
	07/14/16	6.31	0.01	3.00	set skimmer
	07/22/16	6.72	0.10	3.00	skimmer 3/4 full
	07/28/16	6.88	0.13	1.75	skimmer full
	08/04/16	3.72	0.17	3.00	skimmer full
	08/11/16	6.05	0.06	3.00	skimmer full
	08/18/16	6.41	0.04	3.00	skimmer full
	08/31/16	3.86	0.30	2.50	skimmer 1/3 full of NAPL, 2/3 full water; soaked filter in NAPL
	09/15/16	4.36	0.15	2.50	skimmer 1/2 full of NAPL, 1/2 full water; removed skimmer
	09/22/16	5.91	0.05	2.25	
	10/06/16	6.57	0.20	2.25	
	10/21/16	6.09	0.05	2.00	
	11/03/16	5.21	0.07	2.00	
	07/06/17	4.52	0.24	1.00	
03/15/19	3.98	0.08	1.75		
03/19/19	4.45	0.35	1.5		
11/11/19	3.10	0.01	2.0		
MW-9	10/03/14	-	-	0.00	
	12/10/14	-	-	0.00	
	01/09/15	-	-	0.00	
	01/19/16	0.63	0.01	negligible	
	07/14/16	0.63	0.01	0.25	set new sock
	07/22/16	0.52	0.11	0.31	1 foot of staining; set new sock
	07/28/16	0.01	-	0.12	2 feet of staining; set new sock
	08/04/16	0.01	-	0.08	16 inches of staining; set new sock
	08/11/16	0.00	-	0.00	no staining; reset same sock
	08/18/16	0.00	-	0.07	13 inches of staining; set new sock
	08/31/16	0.01	-	0.06	11 inches of staining; set new sock
	09/15/16	0.00	-	0.00	no staining; reset same sock
	09/22/16	0.00	-	0.00	no staining; reset same sock
	10/06/16	0.00	-	0.03	6 inches of staining; set new sock
	10/21/16	0.01	-	0.01	2 inches of staining; set new sock
	11/03/16	0.01	-	0.05	9 inches of staining; set new sock
	07/06/17	0.33	0.01	0.09	17 inches of staining; set new sock
	03/15/19	0.13	0.01	negligible	removed sock
11/11/19	0.00	-	0.0		

**TABLE 2. SUMMARY OF NAPL RECOVERY
FAIRVIEW STATION, ESPANOLA, NEW MEXICO**

Monitor Well	Date Recovered	NAPL Thickness Prior to Bailing ¹	NAPL Thickness After Bailing ¹	Total NAPL Recovered ²	Comments
MW-10	10/03/14	-	-	0.00	
	12/09/14	Lost Data		0.00	
	01/09/15	-	-	0.00	
	01/19/16	Sheen		0.00	
	07/14/16	0.01	-	0.00	set new sock
	07/22/16	0.00	-	0.07	14 inches of staining; set new sock
	07/28/16	0.00	-	0.06	1 foot of staining; set new sock
	08/04/16	0.00	-	0.00	no staining; reset same sock
	08/11/16	0.00	-	0.06	1 foot of staining; set new sock
	08/18/16	0.00	-	0.06	11 inches of staining; set new sock
	08/31/16	0.00	-	0.06	11 inches of staining; set new sock
	09/15/16	0.00	-	0.02	4.5 inches of staining; set new sock
	09/22/16	0.00	-	0.00	no staining; reset same sock
	10/06/16	0.00	-	0.03	5 inches of staining; set new sock
	10/21/16	0.00	-	0.00	no staining; reset same sock
	11/03/16	0.01	-	0.03	6 inches of staining; set new sock
	07/06/17	0.01	-	0.07	13 inches of staining; set new sock
03/15/19	0.00	-	0.0	removed sock	
11/11/19	0.00	-	0.0		
MW-11	10/03/14	0.16	NM	0.00	
	12/10/14	3.63	NM	NM	
	01/09/15	3.36	NM	NM	
	01/19/16	3.66	0.62	2.75	
	07/14/16	3.09	0.01	2.00	set skimmer
	07/22/16	1.50	0.16	1.25	skimmer full
	07/28/16	0.25	0.01	0.10	skimmer 1/2 full
	08/04/16	0.18	0.01	0.25	skimmer 1/2 full; removed skimmer; installed sock
	08/11/16	0.26	0.01	0.06	1 foot of staining; set new sock
	08/18/16	0.36	0.01	0.08	15 inches of staining; set new sock
	08/31/16	0.20	0.01	0.09	18 inches of staining; set new sock
	09/15/16	0.52	0.01	0.06	11 inches of staining; set new sock
	09/22/16	0.85	0.05	0.29	7 inches of staining; set new sock
	10/06/16	1.88	0.09	0.79	8 inches of staining; set new sock
	10/21/16	1.74	0.05	0.77	3 inches of staining; set new sock
	11/03/16	1.21	0.01	0.29	7 inches of staining; set new sock
	07/06/17	2.35	1.43	5.02	3.5 inches of staining; set new sock
03/15/19	1.93	0.50	2.0	sock removed	
03/19/19	1.77	0.40	1.5		
11/11/19	1.74	0.27	1.2		

**TABLE 2. SUMMARY OF NAPL RECOVERY
FAIRVIEW STATION, ESPANOLA, NEW MEXICO**

Monitor Well	Date Recovered	NAPL Thickness Prior to Bailing ¹	NAPL Thickness After Bailing ¹	Total NAPL Recovered ²	Comments
MW-14	10/03/14	0.29	NM	0.00	
	12/10/14	2.19	NM	NM	
	01/09/15	0.49	NM	NM	
	01/19/16	0.79	0.01	0.25	
	07/14/16	0.47	0.01	0.10	set new sock
	07/22/16	0.38	0.19	0.33	16 inches of staining; set new sock
	07/28/16	0.12	0.01	0.10	19 inches of staining; set new sock
	08/04/16	0.01	-	0.01	2 inches of staining; set new sock
	08/11/16	0.00	-	0.02	3 inches of staining; set new sock
	08/18/16	0.01	-	0.07	14 inches of staining; set new sock
	08/31/16	0.00	-	0.06	11 inches of staining; set new sock
	09/15/16	0.01	-	0.02	4 inches of staining; set new sock
	09/22/16	0.01	-	0.02	4 inches of staining; set new sock
	10/06/16	0.05	0.00	0.03	6 inches of staining; set new sock
	10/21/16	0.12	0.01	0.01	2 inches of staining; set new sock
	11/03/16	0.10	0.01	0.07	13 inches of staining; set new sock
	07/06/17	0.67	0.01	0.05	10 inches of staining; set new sock
03/15/19	0.96	0.1	0.5	sock removed	
11/11/19	0.00	-	0.0		
MW-15	07/14/16	1.59	0.01	1.50	
	07/22/16	3.44	0.87	2.50	
	07/28/16	0.73	0.01	0.25	set new sock
	08/04/16	0.60	0.03	0.93	3 feet of staining; set new sock
	08/11/16	0.32	0.04	0.00	no staining; reset same sock
	08/18/16	1.05	0.01	0.15	30 inches of staining; set new sock
	08/31/16	0.06	0.00	0.15	29 inches of staining; set new sock
	09/15/16	0.13	0.01	0.10	19 inches of staining; set new sock
	09/22/16	0.08	0.01	0.08	16 inches of staining; set new sock
	10/06/16	0.20	0.01	0.08	16 inches of staining; set new sock
	10/21/16	0.27	0.01	0.04	8.5 inches of staining; set new sock
	11/03/16	0.01	-	0.03	5 inches of staining; set new sock
	07/06/17	1.21	-	0.54	7 inches of staining; set new sock
	03/15/19	5.14	0.21	4.25	removed sock
03/19/19	1.61	0.24	0.75		
11/11/19	2.94	0.03	1.0	Bailed	

**TABLE 2. SUMMARY OF NAPL RECOVERY
FAIRVIEW STATION, ESPANOLA, NEW MEXICO**

Monitor Well	Date Recovered	NAPL Thickness Prior to Bailing ¹	NAPL Thickness After Bailing ¹	Total NAPL Recovered ²	Comments
MW-18	07/22/16	0.01	-	0.00	set new sock
	07/28/16	0.00	-	0.08	15 inches of staining; set new sock
	08/04/16	0.00	-	0.00	no staining; reset same sock
	08/11/16	0.00	-	0.09	18 inches of staining; set new sock
	08/18/16	0.00	-	0.11	21 inches of staining; set new sock
	08/31/16	0.00	-	0.09	18 inches of staining; set new sock
	09/15/16	0.00	-	0.09	17 inches of staining; set new sock
	09/22/16	0.00	-	0.00	no staining; reset same sock
	10/06/16	0.01	-	0.03	6 inches of staining; set new sock
	10/21/16	0.00	-	0.02	3 inches of staining; set new sock
	11/03/16	0.01	-	0.09	18 inches of staining; set new sock
	07/06/17	0.19	0.01	0.04	8 inches of staining; set new sock
	03/15/19	2.70	0.02	0.75	removed sock
11/11/19	1.06	0.11	1.3		
MW-28	03/15/19	3.91	0.5	2.5	
	11/11/19	2.34	0.0	2.0	
MW-29	03/22/19	0.09		0.0	
	11/11/19	1.95	0.42	2.9	
MW-30	03/22/19	4.88		0.00	
	11/11/19	2.74	2.04	3.75	Poor interface signal
MW-31	11/11/19	3.17	1.61	4.7	Poor interface signal
November 2019				24.10	
Recovered				300.07	

NOTES:

NAPL - Non Aqueous Phase Liquid

¹ Measured in feet.

² Measured in gallons.

Absorbent sock capacity = 0.005 gallons per inch

All NAPL recovered is placed in a drum located at the Fairview Station Site in Espanola, NM.

Fairview Station State Lead

Job # 3426622

Date: 11/11/19 Time On-site: 9:00-14:00 AJE+CRP

Weather conditions: Cold, windy

Equipment Used: INTERFACE PROBE, NAPL PUMP, BAIGERS

NAPL Measurement and Recovery Data							
MW ID	Initial Measurements		Gallons Recovered		Final Measurements		Remarks
	DTP	DTW	Skimmer	Bail/Pump	DTP	DTW	
MW-2	13.61	18.83	0.20	2.9	16.24	17.01	Poor interface signal after rem.
MW-3	13.54	18.65	0.25	1.9	15.69	16.03	
MW-5	—	14.10					
MW-6	—	14.49					
MW-7	—	14.81					
MW-8	14.95	18.05	—	2.0	15.57	15.58	
MW-9	—	15.65					
MW-10	—	15.72					
MW-11	15.35	17.09	—	1.2	15.91	16.18	
MW-14	—	15.45					
MW-15	13.50	16.44	—	1.0	14.92	14.95	
MW-18	15.46	16.52	—	1.3	15.89	16.00	
MW-27	—	15.12					
MW-28	14.62	16.96	—	2.0	NONE	15.38	
MW-29	14.40	16.35	—	2.9	14.90	15.32	
MW-30	13.26	16.00	—	3.75	13.96	16.00	POOR INTERFACE SIGNAL
MW-31	13.63	16.80		4.70	14.35	15.68	POOR INTERFACE SIGNAL

Notes: MW-30 + MW-31 - POOR INTERFACE SIGNAL BTWN NAPL + WATER - LIKELY EMULSIFIED NAPL IN WATER COLUMN