

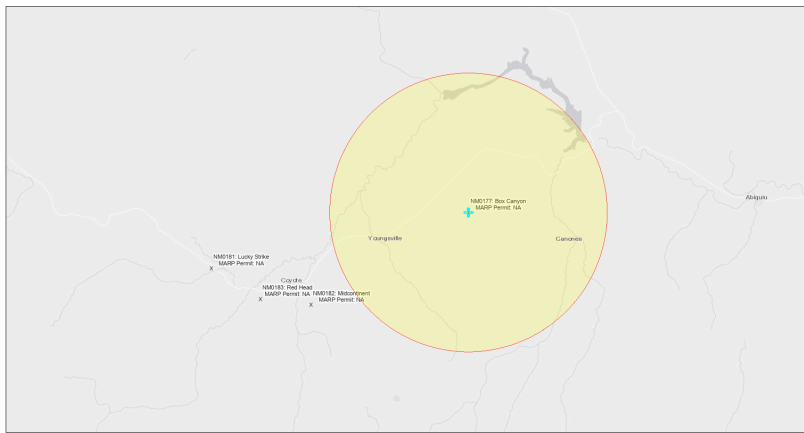


EJScreen Community Report

This report provides environmental and socioeconomic information for user-defined areas, and combines that data into environmental justice and supplemental indexes.

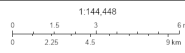
Box Canyon NM0177

5 miles Ring Centered at 36.201256,-106.506510
Population: 266
Area in square miles: 78.53



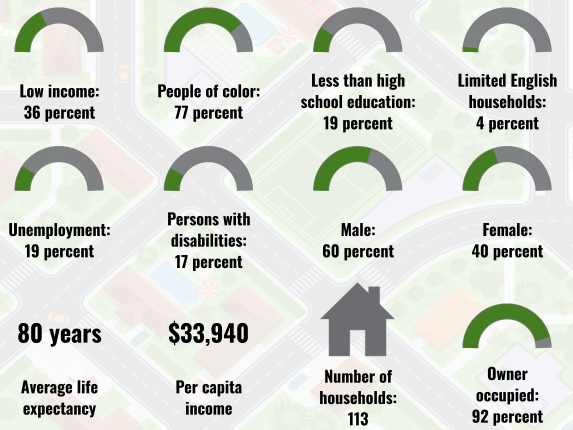
September 24, 2024

Box Canyon NM0177
Abandoned Uranium Mines

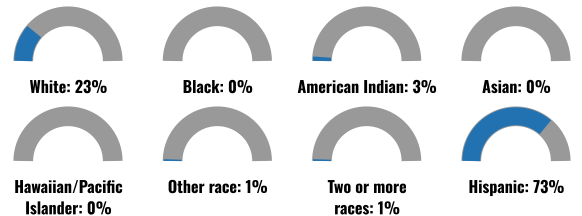


1:144,448
New Mexico Energy, Minerals and Natural Resources Department Bureau of Land Management, State Parks & Historic Sites, HERE, Garmin, USGS, EPA, NPS, Esri, HERE, DeLorme

COMMUNITY INFORMATION



BREAKDOWN BY RACE



BREAKDOWN BY AGE



LIMITED ENGLISH SPEAKING BREAKDOWN



LANGUAGES SPOKEN AT HOME

LANGUAGE	PERCENT
No language data available.	

Notes: Numbers may not sum to totals due to rounding. Hispanic population can be of any race. Source: U.S. Census Bureau, American Community Survey (ACS) 2018-2022. Life expectancy data comes from the Centers for Disease Control.

Report for 5 miles Ring Centered at 36.201256,-106.506510
Report produced September 24, 2024 using EJScreen Version 2.3

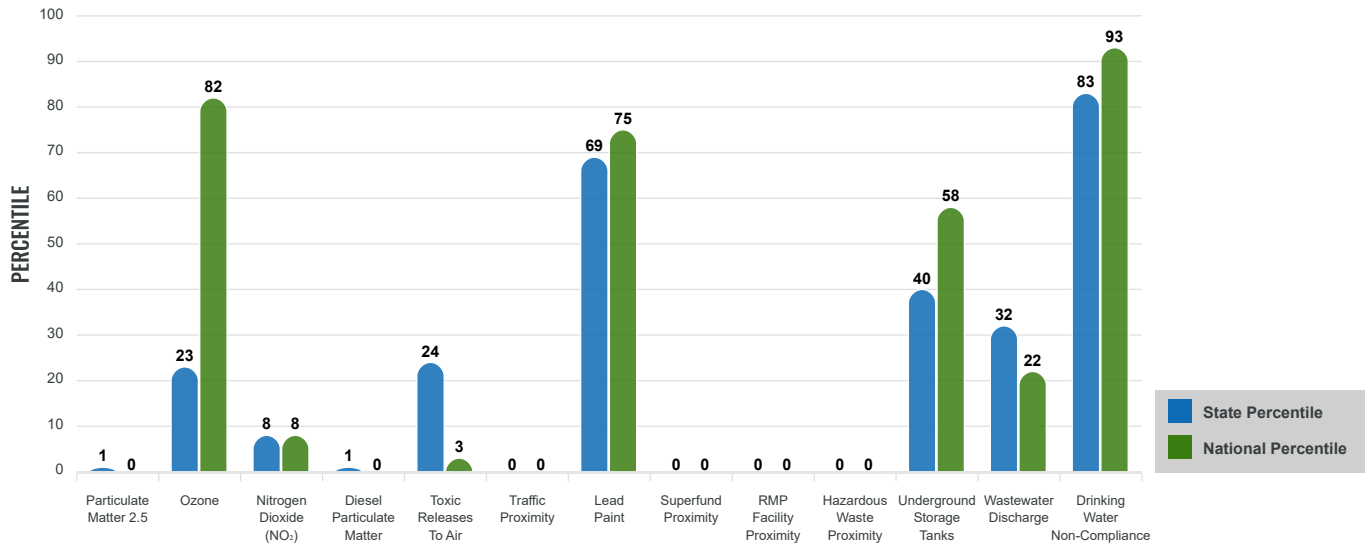
Environmental Justice & Supplemental Indexes

The environmental justice and supplemental indexes are a combination of environmental and socioeconomic information. There are thirteen EJ indexes and supplemental indexes in EJScreen reflecting the 13 environmental indicators. The indexes for a selected area are compared to those for all other locations in the state or nation. For more information and calculation details on the EJ and supplemental indexes, please visit the [EJScreen website](#).

EJ INDEXES

The EJ indexes help users screen for potential EJ concerns. To do this, the EJ index combines data on low income and people of color populations with a single environmental indicator.

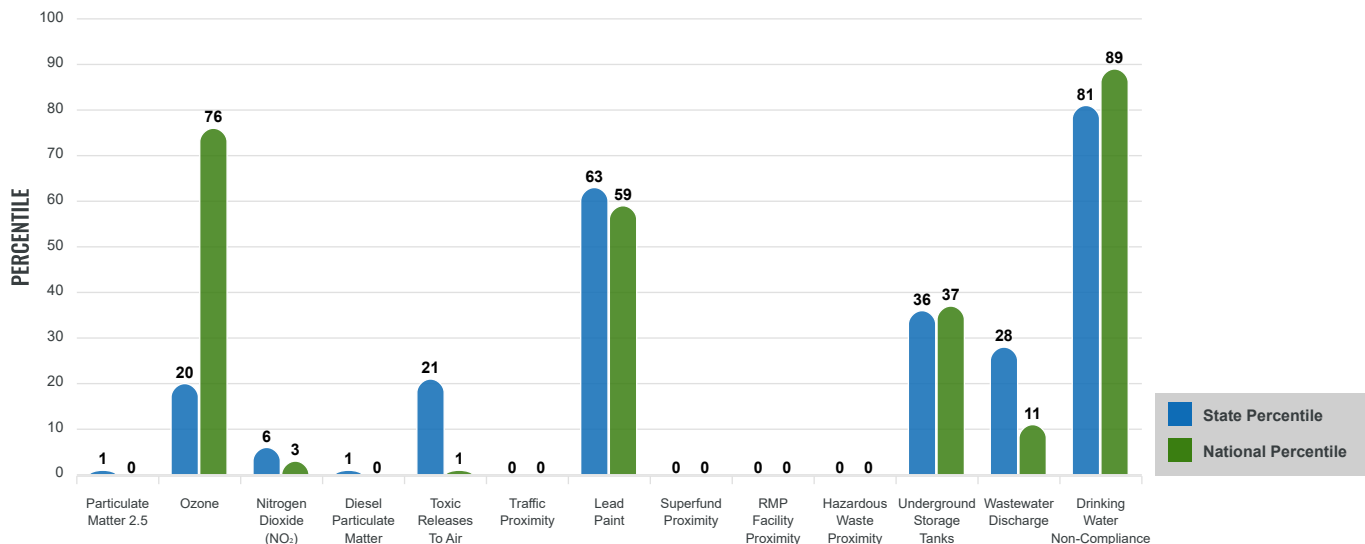
EJ INDEXES FOR THE SELECTED LOCATION



SUPPLEMENTAL INDEXES

The supplemental indexes offer a different perspective on community-level vulnerability. They combine data on percent low income, percent persons with disabilities, percent less than high school education, percent limited English speaking, and percent low life expectancy with a single environmental indicator.

SUPPLEMENTAL INDEXES FOR THE SELECTED LOCATION



Report for 5 miles Ring Centered at 36.201256,-106.506510

Report produced September 24, 2024 using EJScreen Version 2.3

EJScreen Environmental and Socioeconomic Indicators Data

SELECTED VARIABLES	VALUE	STATE AVERAGE	PERCENTILE IN STATE	USA AVERAGE	PERCENTILE IN USA
ENVIRONMENTAL BURDEN INDICATORS					
Particulate Matter 2.5 (µg/m ³)	4.37	6.11	0	8.45	0
Ozone (ppb)	62.9	65.3	18	61.8	62
Nitrogen Dioxide (NO ₂) (ppbv)	2.3	8.1	5	7.8	2
Diesel Particulate Matter (µg/m ³)	0.00851	0.187	0	0.191	0
Toxic Releases to Air (toxicity-weighted concentration)	0.003	29	16	4,600	1
Traffic Proximity (daily traffic count/distance to road)	0	730,000	0	1,700,000	0
Lead Paint (% Pre-1960 Housing)	0.21	0.19	66	0.3	49
Superfund Proximity (site count/km distance)	0	0.34	0	0.39	0
RMP Facility Proximity (facility count/km distance)	0	0.2	0	0.57	0
Hazardous Waste Proximity (facility count/km distance)	0	1.2	0	3.5	0
Underground Storage Tanks (count/km ²)	0.0029	2.8	28	3.6	27
Wastewater Discharge (toxicity-weighted concentration/m distance)	0.0001	990000	24	700000	8
Drinking Water Non-Compliance (points)	1.4	5.6	81	2.2	83
SOCIOECONOMIC INDICATORS					
Demographic Index USA	2.07	N/A	N/A	1.34	79
Supplemental Demographic Index USA	1.82	N/A	N/A	1.64	65
Demographic Index State	2.4	2.16	59	N/A	N/A
Supplemental Demographic Index State	1.54	1.62	48	N/A	N/A
People of Color	77%	62%	69	40%	81
Low Income	36%	39%	45	30%	65
Unemployment Rate	20%	6%	93	6%	95
Limited English Speaking Households	4%	6%	63	5%	74
Less Than High School Education	19%	14%	72	11%	80
Under Age 5	1%	5%	19	5%	13
Over Age 64	34%	20%	87	18%	91

*Diesel particulate matter index is from the EPA's Air Toxics Data Update, which is the Agency's ongoing, comprehensive evaluation of air toxics in the United States. This effort aims to prioritize air toxics, emission sources, and locations of interest for further study. It is important to remember that the air toxics data presented here provide broad estimates of health risks over geographic areas of the country, not definitive risks to specific individuals or locations. More information on the Air Toxics Data Update can be found at: <https://www.epa.gov/haps/air-toxics-data-update>.

Sites reporting to EPA within defined area:

Superfund	0
Hazardous Waste, Treatment, Storage, and Disposal Facilities	0
Water Dischargers	2
Air Pollution	0
Brownfields	0
Toxic Release Inventory	0

Other community features within defined area:

Schools	0
Hospitals	0
Places of Worship	1

Other environmental data:

Air Non-attainment	No
Impaired Waters	Yes

Selected location contains American Indian Reservation Lands*	No
Selected location contains a "Justice40 (CEJST)" disadvantaged community	Yes
Selected location contains an EPA IRA disadvantaged community	Yes

Report for 5 miles Ring Centered at 36.201256,-106.506510
 Report produced September 24, 2024 using EJScreen Version 2.3

EJScreen Environmental and Socioeconomic Indicators Data

HEALTH INDICATORS

INDICATOR	VALUE	STATE AVERAGE	STATE PERCENTILE	US AVERAGE	US PERCENTILE
Low Life Expectancy	18%	19%	30	20%	35
Heart Disease	6.8	5.9	75	5.8	73
Asthma	9.8	11.2	8	10.3	39
Cancer	6.4	6.1	59	6.4	47
Persons with Disabilities	17.1%	17.1%	55	13.7%	74

CLIMATE INDICATORS

INDICATOR	VALUE	STATE AVERAGE	STATE PERCENTILE	US AVERAGE	US PERCENTILE
Flood Risk	15%	9%	83	12%	79
Wildfire Risk	72%	58%	44	14%	88

CRITICAL SERVICE GAPS

INDICATOR	VALUE	STATE AVERAGE	STATE PERCENTILE	US AVERAGE	US PERCENTILE
Broadband Internet	53%	20%	93	13%	98
Lack of Health Insurance	9%	10%	56	9%	63
Housing Burden	No	N/A	N/A	N/A	N/A
Transportation Access Burden	Yes	N/A	N/A	N/A	N/A
Food Desert	No	N/A	N/A	N/A	N/A

Report for 5 miles Ring Centered at 36.201256,-106.506510

Report produced September 24, 2024 using EJScreen Version 2.3

Location: User-specified point center at 36.201256, -106.506510
 Ring (buffer): 5-miles radius
 Description: Box Canyon NM0177

Summary of ACS Estimates		2018 - 2022
Population		266
Population Density (per sq. mile)		4
People of Color Population		206
% People of Color Population		77%
Households		113
Housing Units		190
Housing Units Built Before 1950		25
Per Capita Income		33,940
Land Area (sq. miles) (Source: SF1)		74.16
% Land Area		100%
Water Area (sq. miles) (Source: SF1)		0.16
% Water Area		0%

	2018 - 2022 ACS Estimates	Percent	MOE (±)
Population by Race			
Total	266	100%	380
Population Reporting One Race	206	77%	575
White	88	33%	202
Black	0	0%	13
American Indian	8	3%	90
Asian	0	0%	13
Pacific Islander	0	0%	13
Some Other Race	110	41%	244
Population Reporting Two or More Races	61	23%	191
Total Hispanic Population	194	73%	367
Total Non-Hispanic Population	72		
White Alone	60	23%	160
Black Alone	0	0%	13
American Indian Alone	8	3%	90
Non-Hispanic Asian Alone	0	0%	13
Pacific Islander Alone	0	0%	13
Other Race Alone	2	1%	41
Two or More Races Alone	2	1%	28
Population by Sex			
Male	158	60%	242
Female	108	40%	187
Population by Age			
Age 0-4	1	1%	35
Age 0-17	17	7%	84
Age 18+	249	93%	233
Age 65+	89	34%	142

Data Note: Detail may not sum to totals due to rounding. Hispanic population can be of any race.

N/A means not available. **Source:** U.S. Census Bureau, American Community Survey (ACS) 2018 - 2022

Location: User-specified point center at 36.201256, -106.506510
 Ring (buffer): 5-miles radius
 Description: Box Canyon NM0177

	2018 - 2022 ACS Estimates	Percent	MOE (±)
Population 25+ by Educational Attainment			
Total	235	100%	352
Less than 9th Grade	14	6%	86
9th - 12th Grade, No Diploma	30	13%	75
High School Graduate	104	44%	160
Some College, No Degree	37	16%	81
Associate Degree	7	3%	37
Bachelor's Degree or more	43	18%	137
Population Age 5+ Years by Ability to Speak English			
Total	265	100%	380
Speak only English	83	31%	163
Non-English at Home ¹⁺²⁺³⁺⁴	182	69%	285
¹ Speak English "very well"	173	65%	282
² Speak English "well"	7	3%	52
³ Speak English "not well"	0	0%	45
⁴ Speak English "not at all"	1	0%	47
³⁺⁴ Speak English "less than well"	1	0%	65
²⁺³⁺⁴ Speak English "less than very well"	8	3%	82
Limited English Speaking Households*			
Total	4	100%	38
Speak Spanish	4	100%	31
Speak Other Indo-European Languages	0	0%	13
Speak Asian-Pacific Island Languages	0	0%	13
Speak Other Languages	0	0%	13
Households by Household Income			
Household Income Base	113	100%	149
< \$15,000	8	7%	33
\$15,000 - \$25,000	10	9%	47
\$25,000 - \$50,000	26	23%	96
\$50,000 - \$75,000	25	22%	75
\$75,000 +	44	39%	108
Occupied Housing Units by Tenure			
Total	113	100%	149
Owner Occupied	104	92%	155
Renter Occupied	9	8%	28
Employed Population Age 16+ Years			
Total	251	100%	369
In Labor Force	132	53%	237
Civilian Unemployed in Labor Force	25	19%	102
Not In Labor Force	119	47%	191

Data Note: Detail may not sum to totals due to rounding. Hispanic population can be of anyrace.

N/A means not available. **Source:** U.S. Census Bureau, American Community Survey (ACS)

*Households in which no one 14 and over speaks English "very well" or speaks English only.

Location: User-specified point center at 36.201256, -106.506510

Ring (buffer): 5-miles radius

Description: Box Canyon NM0177

	2018 - 2022 ACS Estimates	Percent	MOE (±)
Population by Language Spoken at Home*			
Total (persons age 5 and above)	N/A	N/A	N/A
English	N/A	N/A	N/A
Spanish	N/A	N/A	N/A
French, Haitian, or Cajun	N/A	N/A	N/A
German or other West Germanic	N/A	N/A	N/A
Russian, Polish, or Other Slavic	N/A	N/A	N/A
Other Indo-European	N/A	N/A	N/A
Korean	N/A	N/A	N/A
Chinese (including Mandarin, Cantonese)	N/A	N/A	N/A
Vietnamese	N/A	N/A	N/A
Tagalog (including Filipino)	N/A	N/A	N/A
Other Asian and Pacific Island	N/A	N/A	N/A
Arabic	N/A	N/A	N/A
Other and Unspecified	N/A	N/A	N/A
Total Non-English	N/A	N/A	N/A

Data Note: Detail may not sum to totals due to rounding. Hispanic population can be of any race.
 N/A means not available. **Source:** U.S. Census Bureau, American Community Survey (ACS) 2018 - 2022.
 *Population by Language Spoken at Home is available at the census tract summary level and up.