



# EJScreen Community Report

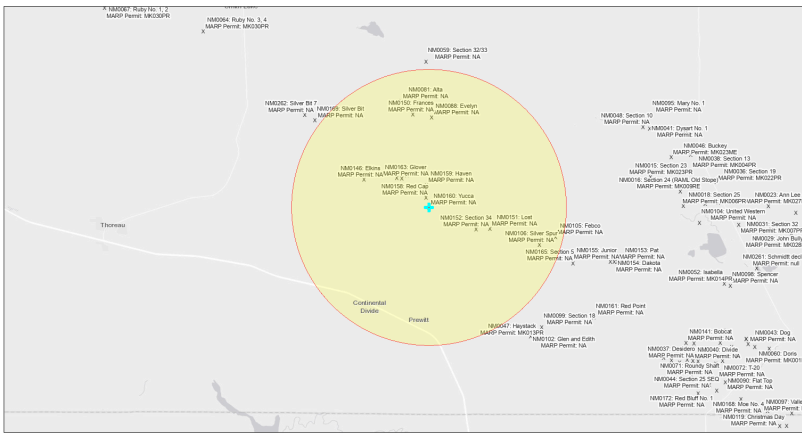
This report provides environmental and socioeconomic information for user-defined areas, and combines that data into environmental justice and supplemental indexes.

## Yucca NM0160

5 miles Ring Centered at 35.413784,-108.014260

Population: 741

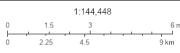
Area in square miles: 78.53



September 24, 2024

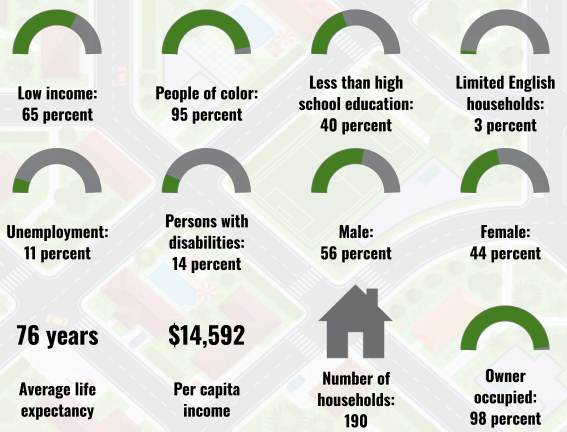
Yucca NM0160

\* Abandoned Uranium Mines

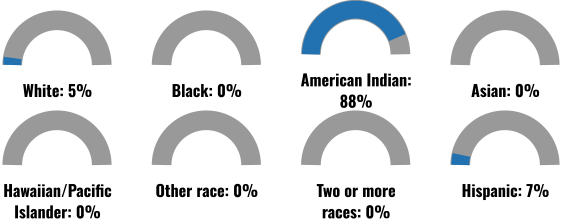


Bureau of Land Management, EPA, HERS, Genco, USGS, BPA, USF, New Mexico Energy, Minerals and Natural Resources Department, ENR, HERS, USFS

### COMMUNITY INFORMATION



### BREAKDOWN BY RACE



### BREAKDOWN BY AGE



### LIMITED ENGLISH SPEAKING BREAKDOWN



Notes: Numbers may not sum to totals due to rounding. Hispanic population can be of any race. Source: U.S. Census Bureau American Community Survey (ACS) 2018-2022. Life expectancy data comes from the Centers for Disease Control.

### LANGUAGES SPOKEN AT HOME

LANGUAGE	PERCENT
English	31%
Other and Unspecified	69%
Total Non-English	69%

Report for 5 miles Ring Centered at 35.413784,-108.014260

Report produced September 24, 2024 using EJScreen Version 2.3

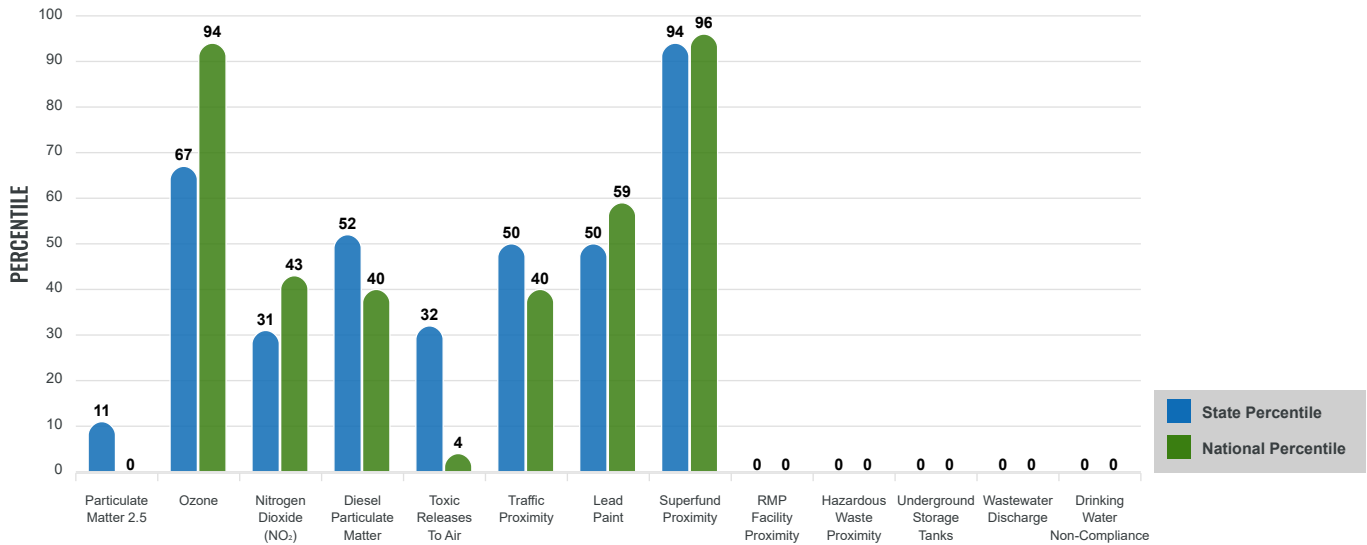
# Environmental Justice & Supplemental Indexes

The environmental justice and supplemental indexes are a combination of environmental and socioeconomic information. There are thirteen EJ indexes and supplemental indexes in EJScreen reflecting the 13 environmental indicators. The indexes for a selected area are compared to those for all other locations in the state or nation. For more information and calculation details on the EJ and supplemental indexes, please visit the [EJScreen website](#).

## EJ INDEXES

The EJ indexes help users screen for potential EJ concerns. To do this, the EJ index combines data on low income and people of color populations with a single environmental indicator.

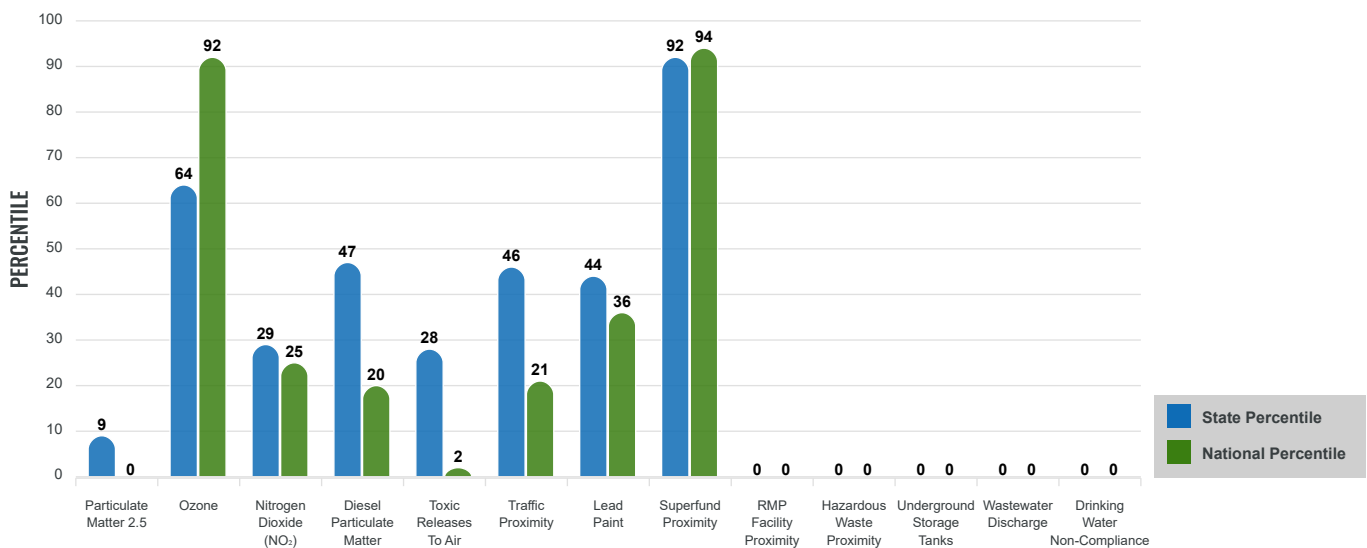
### EJ INDEXES FOR THE SELECTED LOCATION



## SUPPLEMENTAL INDEXES

The supplemental indexes offer a different perspective on community-level vulnerability. They combine data on percent low income, percent persons with disabilities, percent less than high school education, percent limited English speaking, and percent low life expectancy with a single environmental indicator.

### SUPPLEMENTAL INDEXES FOR THE SELECTED LOCATION



Report for 5 miles Ring Centered at 35.413784,-108.014260

Report produced September 24, 2024 using EJScreen Version 2.3

# EJScreen Environmental and Socioeconomic Indicators Data

SELECTED VARIABLES	VALUE	STATE AVERAGE	PERCENTILE IN STATE	USA AVERAGE	PERCENTILE IN USA
<b>ENVIRONMENTAL BURDEN INDICATORS</b>					
Particulate Matter 2.5 (µg/m <sup>3</sup> )	4.6	6.11	4	8.45	0
Ozone (ppb)	64.6	65.3	37	61.8	69
Nitrogen Dioxide (NO <sub>2</sub> ) (ppbv)	3.8	8.1	15	7.8	12
Diesel Particulate Matter (µg/m <sup>3</sup> )	0.0585	0.187	29	0.191	11
Toxic Releases to Air (toxicity-weighted concentration)	0.001	29	16	4,600	1
Traffic Proximity (daily traffic count/distance to road)	49,000	730,000	28	1,700,000	12
Lead Paint (% Pre-1960 Housing)	0.025	0.19	29	0.3	20
Superfund Proximity (site count/km distance)	0.38	0.34	80	0.39	80
RMP Facility Proximity (facility count/km distance)	0	0.2	0	0.57	0
Hazardous Waste Proximity (facility count/km distance)	0	1.2	0	3.5	0
Underground Storage Tanks (count/km <sup>2</sup> )	0	2.8	0	3.6	0
Wastewater Discharge (toxicity-weighted concentration/m distance)	0	990000	0	700000	0
Drinking Water Non-Compliance (points)	0	5.6	0	2.2	0
<b>SOCIOECONOMIC INDICATORS</b>					
Demographic Index USA	3.04	N/A	N/A	1.34	95
Supplemental Demographic Index USA	2.58	N/A	N/A	1.64	90
Demographic Index State	3.42	2.16	92	N/A	N/A
Supplemental Demographic Index State	2.29	1.62	83	N/A	N/A
People of Color	95%	62%	90	40%	92
Low Income	65%	39%	85	30%	92
Unemployment Rate	11%	6%	78	6%	84
Limited English Speaking Households	2%	6%	51	5%	65
Less Than High School Education	40%	14%	95	11%	96
Under Age 5	4%	5%	53	5%	46
Over Age 64	12%	20%	29	18%	35

\*Diesel particulate matter index is from the EPA's Air Toxics Data Update, which is the Agency's ongoing, comprehensive evaluation of air toxics in the United States. This effort aims to prioritize air toxics, emission sources, and locations of interest for further study. It is important to remember that the air toxics data presented here provide broad estimates of health risks over geographic areas of the country, not definitive risks to specific individuals or locations. More information on the Air Toxics Data Update can be found at: <https://www.epa.gov/haps/air-toxics-data-update>.

**Sites reporting to EPA within defined area:**

Superfund .....	1
Hazardous Waste, Treatment, Storage, and Disposal Facilities .....	0
Water Dischargers .....	9
Air Pollution .....	2
Brownfields .....	2
Toxic Release Inventory .....	2

**Other community features within defined area:**

Schools .....	1
Hospitals .....	0
Places of Worship .....	1

**Other environmental data:**

Air Non-attainment .....	No
Impaired Waters .....	No

Selected location contains American Indian Reservation Lands* .....	Yes
Selected location contains a "Justice40 (CEJST)" disadvantaged community .....	Yes
Selected location contains an EPA IRA disadvantaged community .....	Yes

*Report for 5 miles Ring Centered at 35.413784,-108.014260  
Report produced September 24, 2024 using EJScreen Version 2.3*

## EJScreen Environmental and Socioeconomic Indicators Data

### HEALTH INDICATORS

INDICATOR	VALUE	STATE AVERAGE	STATE PERCENTILE	US AVERAGE	US PERCENTILE
Low Life Expectancy	23%	19%	79	20%	78
Heart Disease	9.2	5.9	96	5.8	96
Asthma	15.8	11.2	99	10.3	99
Cancer	5.2	6.1	27	6.4	25
Persons with Disabilities	14.3%	17.1%	39	13.7%	59

### CLIMATE INDICATORS

INDICATOR	VALUE	STATE AVERAGE	STATE PERCENTILE	US AVERAGE	US PERCENTILE
Flood Risk	9%	9%	66	12%	63
Wildfire Risk	67%	58%	43	14%	87

### CRITICAL SERVICE GAPS

INDICATOR	VALUE	STATE AVERAGE	STATE PERCENTILE	US AVERAGE	US PERCENTILE
Broadband Internet	66%	20%	97	13%	99
Lack of Health Insurance	15%	10%	83	9%	85
Housing Burden	No	N/A	N/A	N/A	N/A
Transportation Access Burden	Yes	N/A	N/A	N/A	N/A
Food Desert	Yes	N/A	N/A	N/A	N/A

Report for 5 miles Ring Centered at 35.413784,-108.014260

Report produced September 24, 2024 using EJScreen Version 2.3

Location: User-specified point center at 35.413784, -108.014260  
 Ring (buffer): 5-miles radius  
 Description: Yucca NM0160

Summary of ACS Estimates		2018 - 2022
Population		741
Population Density (per sq. mile)		11
People of Color Population		704
% People of Color Population		95%
Households		190
Housing Units		235
Housing Units Built Before 1950		2
Per Capita Income		14,592
Land Area (sq. miles) (Source: SF1)		70.50
% Land Area		100%
Water Area (sq. miles) (Source: SF1)		0.16
% Water Area		0%

	2018 - 2022 ACS Estimates	Percent	MOE (±)
<b>Population by Race</b>			
Total	741	100%	427
Population Reporting One Race	727	98%	632
White	76	10%	153
Black	0	0%	13
American Indian	651	88%	427
Asian	0	0%	13
Pacific Islander	0	0%	13
Some Other Race	0	0%	13
Population Reporting Two or More Races	14	2%	49
Total Hispanic Population	55	7%	132
Total Non-Hispanic Population	687		
White Alone	38	5%	90
Black Alone	0	0%	13
American Indian Alone	649	88%	428
Non-Hispanic Asian Alone	0	0%	13
Pacific Islander Alone	0	0%	13
Other Race Alone	0	0%	13
Two or More Races Alone	0	0%	13
<b>Population by Sex</b>			
Male	418	56%	368
Female	323	44%	149
<b>Population by Age</b>			
Age 0-4	32	4%	69
Age 0-17	250	34%	232
Age 18+	491	66%	249
Age 65+	92	12%	93

**Data Note:** Detail may not sum to totals due to rounding. Hispanic population can be of any race.

N/A means not available. **Source:** U.S. Census Bureau, American Community Survey (ACS) 2018 - 2022

Location: User-specified point center at 35.413784, -108.014260  
 Ring (buffer): 5-miles radius  
 Description: Yucca NM0160

	2018 - 2022 ACS Estimates	Percent	MOE (±)
<b>Population 25+ by Educational Attainment</b>			
Total	447	100%	225
Less than 9th Grade	63	14%	111
9th - 12th Grade, No Diploma	117	26%	148
High School Graduate	140	31%	132
Some College, No Degree	87	19%	123
Associate Degree	5	1%	16
Bachelor's Degree or more	35	8%	68
<b>Population Age 5+ Years by Ability to Speak English</b>			
Total	709	100%	388
Speak only English	365	52%	374
Non-English at Home <sup>1+2+3+4</sup>	344	48%	236
<sup>1</sup> Speak English "very well"	324	46%	237
<sup>2</sup> Speak English "well"	12	2%	108
<sup>3</sup> Speak English "not well"	7	1%	73
<sup>4</sup> Speak English "not at all"	1	0%	43
<sup>3+4</sup> Speak English "less than well"	9	1%	85
<sup>2+3+4</sup> Speak English "less than very well"	20	3%	137
<b>Limited English Speaking Households*</b>			
Total	5	100%	44
Speak Spanish	0	0%	13
Speak Other Indo-European Languages	0	0%	13
Speak Asian-Pacific Island Languages	0	0%	13
Speak Other Languages	5	100%	38
<b>Households by Household Income</b>			
Household Income Base	190	100%	96
< \$15,000	56	30%	88
\$15,000 - \$25,000	23	12%	64
\$25,000 - \$50,000	40	21%	63
\$50,000 - \$75,000	19	10%	41
\$75,000 +	52	28%	108
<b>Occupied Housing Units by Tenure</b>			
Total	190	100%	96
Owner Occupied	187	98%	97
Renter Occupied	3	2%	12
<b>Employed Population Age 16+ Years</b>			
Total	526	100%	237
In Labor Force	262	50%	212
Civilian Unemployed in Labor Force	28	11%	55
Not In Labor Force	264	50%	163

**Data Note:** Detail may not sum to totals due to rounding. Hispanic population can be of anyrace.

N/A means not available. **Source:** U.S. Census Bureau, American Community Survey (ACS)

\*Households in which no one 14 and over speaks English "very well" or speaks English only.

Location: User-specified point center at 35.413784, -108.014260

Ring (buffer): 5-miles radius

Description: Yucca NM0160

	2018 - 2022 ACS Estimates	Percent	MOE (±)
<b>Population by Language Spoken at Home*</b>			
Total (persons age 5 and above)	669	100%	328
English	204	31%	133
Spanish	0	0%	13
French, Haitian, or Cajun	0	0%	13
German or other West Germanic	0	0%	13
Russian, Polish, or Other Slavic	0	0%	13
Other Indo-European	0	0%	13
Korean	0	0%	13
Chinese (including Mandarin, Cantonese)	0	0%	13
Vietnamese	0	0%	13
Tagalog (including Filipino)	0	0%	13
Other Asian and Pacific Island	0	0%	13
Arabic	0	0%	13
Other and Unspecified	465	69%	266
Total Non-English	465	69%	354

**Data Note:** Detail may not sum to totals due to rounding. Hispanic population can be of any race.  
N/A means not available. **Source:** U.S. Census Bureau, American Community Survey (ACS) 2018 - 2022.  
\*Population by Language Spoken at Home is available at the census tract summary level and up.