

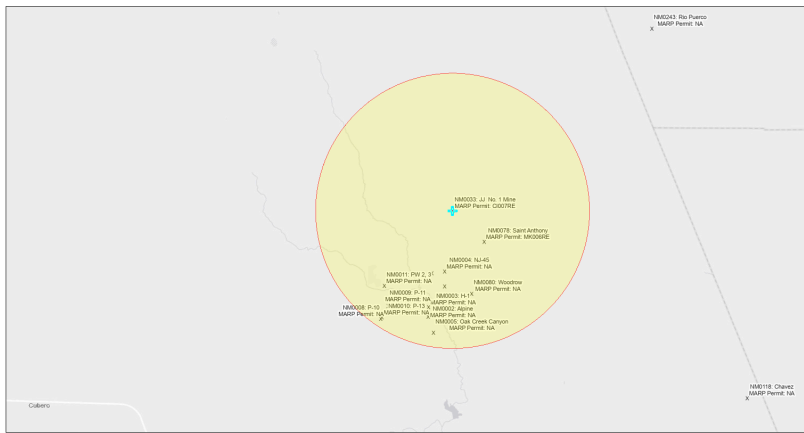


# EJScreen Community Report

This report provides environmental and socioeconomic information for user-defined areas, and combines that data into environmental justice and supplemental indexes.

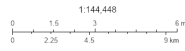
## JJ No. 1 Mine NM0033

5 miles Ring Centered at 35.175464,-107.326561  
Population: 952  
Area in square miles: 78.53



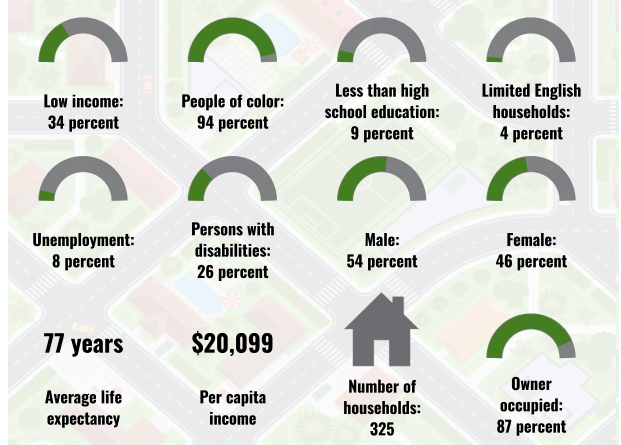
September 17, 2024

JJ No. 1 Mine NM0033  
\* Abandoned Uranium Mines

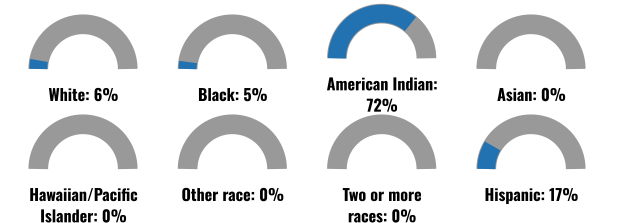


Bureau of Land Management, EPA, HHS, Census, USGS, EPA, USF, New Mexico Energy, Storage and Natural Resources Department, EPA, HHS, USF

### COMMUNITY INFORMATION



### BREAKDOWN BY RACE



### BREAKDOWN BY AGE



### LIMITED ENGLISH SPEAKING BREAKDOWN



### LANGUAGES SPOKEN AT HOME

LANGUAGE	PERCENT
No language data available.	

Notes: Numbers may not sum to totals due to rounding. Hispanic population can be of any race. Source: U.S. Census Bureau, American Community Survey (ACS) 2018-2022. Life expectancy data comes from the Centers for Disease Control.

Report for 5 miles Ring Centered at 35.175464,-107.326561  
Report produced September 17, 2024 using EJScreen Version 2.3

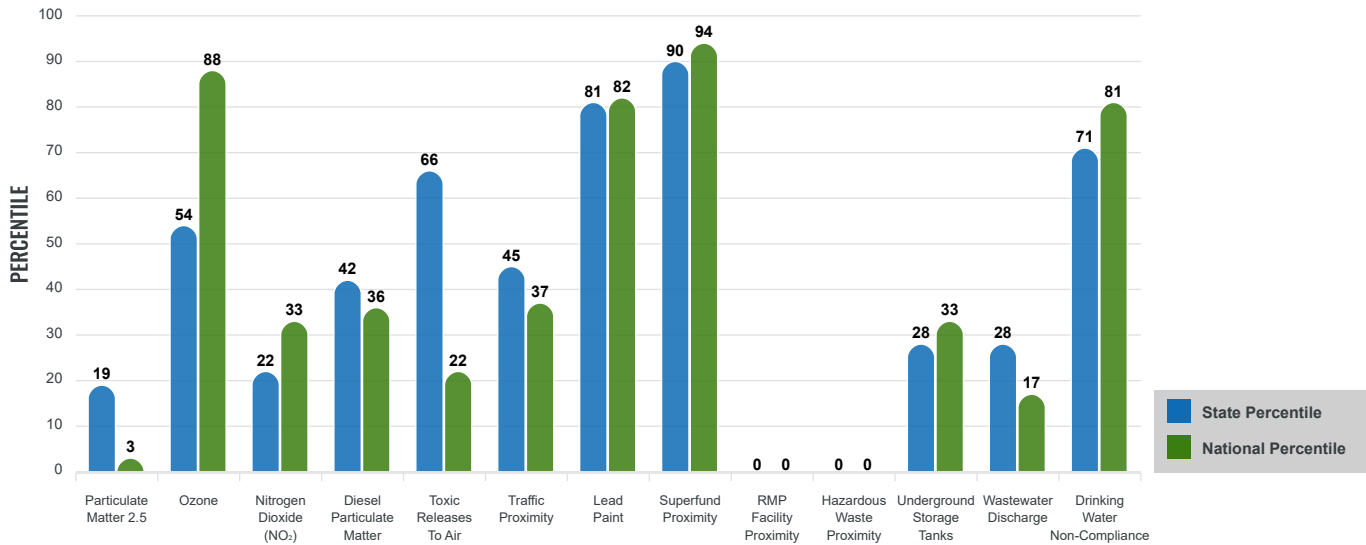
# Environmental Justice & Supplemental Indexes

The environmental justice and supplemental indexes are a combination of environmental and socioeconomic information. There are thirteen EJ indexes and supplemental indexes in EJScreen reflecting the 13 environmental indicators. The indexes for a selected area are compared to those for all other locations in the state or nation. For more information and calculation details on the EJ and supplemental indexes, please visit the [EJScreen website](#).

## EJ INDEXES

The EJ indexes help users screen for potential EJ concerns. To do this, the EJ index combines data on low income and people of color populations with a single environmental indicator.

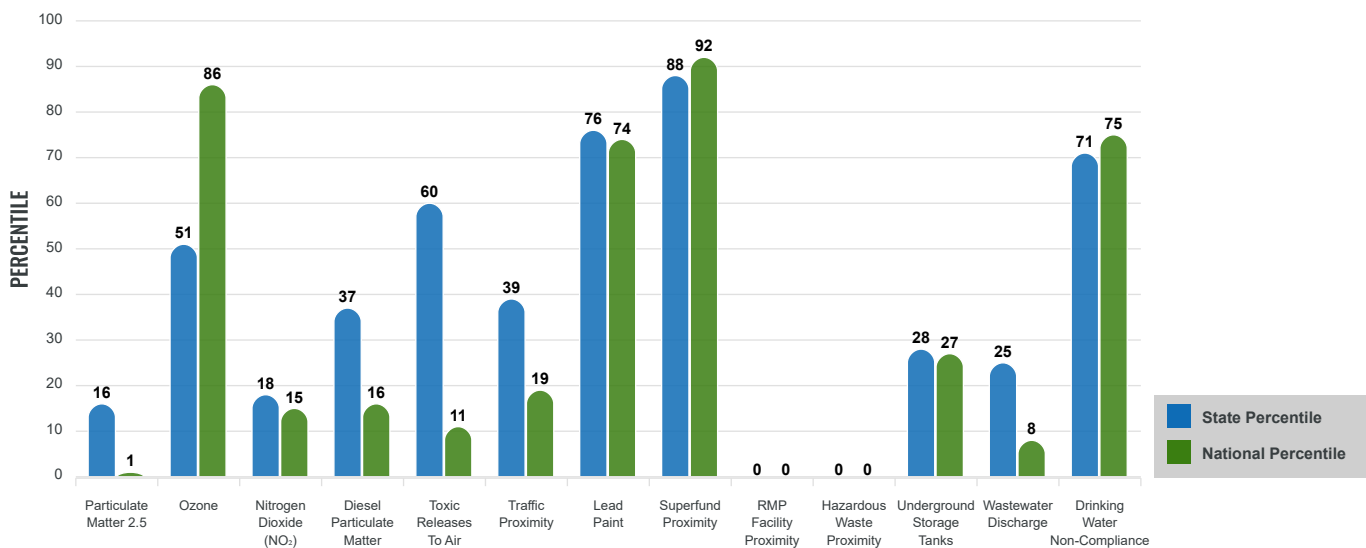
### EJ INDEXES FOR THE SELECTED LOCATION



## SUPPLEMENTAL INDEXES

The supplemental indexes offer a different perspective on community-level vulnerability. They combine data on percent low income, percent persons with disabilities, percent less than high school education, percent limited English speaking, and percent low life expectancy with a single environmental indicator.

### SUPPLEMENTAL INDEXES FOR THE SELECTED LOCATION



Report for 5 miles Ring Centered at 35.175464,-107.326561

Report produced September 17, 2024 using EJScreen Version 2.3

# EJScreen Environmental and Socioeconomic Indicators Data

SELECTED VARIABLES	VALUE	STATE AVERAGE	PERCENTILE IN STATE	USA AVERAGE	PERCENTILE IN USA
<b>ENVIRONMENTAL BURDEN INDICATORS</b>					
Particulate Matter 2.5 (µg/m <sup>3</sup> )	4.88	6.11	12	8.45	1
Ozone (ppb)	64.8	65.3	38	61.8	70
Nitrogen Dioxide (NO <sub>2</sub> ) (ppbv)	3.4	8.1	13	7.8	9
Diesel Particulate Matter (µg/m <sup>3</sup> )	0.0575	0.187	29	0.191	11
Toxic Releases to Air (toxicity-weighted concentration)	7.3	29	49	4,600	8
Traffic Proximity (daily traffic count/distance to road)	62,000	730,000	31	1,700,000	13
Lead Paint (% Pre-1960 Housing)	0.29	0.19	73	0.3	57
Superfund Proximity (site count/km distance)	2.3	0.34	97	0.39	96
RMP Facility Proximity (facility count/km distance)	0	0.2	0	0.57	0
Hazardous Waste Proximity (facility count/km distance)	0	1.2	0	3.5	0
Underground Storage Tanks (count/km <sup>2</sup> )	0.00024	2.8	27	3.6	26
Wastewater Discharge (toxicity-weighted concentration/m distance)	0.00013	990000	24	700000	8
Drinking Water Non-Compliance (points)	11	5.6	87	2.2	96
<b>SOCIOECONOMIC INDICATORS</b>					
Demographic Index USA	2.29	N/A	N/A	1.34	84
Supplemental Demographic Index USA	2.07	N/A	N/A	1.64	76
Demographic Index State	2.69	2.16	69	N/A	N/A
Supplemental Demographic Index State	1.78	1.62	62	N/A	N/A
People of Color	94%	62%	89	40%	91
Low Income	34%	39%	43	30%	62
Unemployment Rate	8%	6%	71	6%	77
Limited English Speaking Households	3%	6%	58	5%	70
Less Than High School Education	9%	14%	45	11%	54
Under Age 5	2%	5%	31	5%	25
Over Age 64	19%	20%	57	18%	63

\*Diesel particulate matter index is from the EPA's Air Toxics Data Update, which is the Agency's ongoing, comprehensive evaluation of air toxics in the United States. This effort aims to prioritize air toxics, emission sources, and locations of interest for further study. It is important to remember that the air toxics data presented here provide broad estimates of health risks over geographic areas of the country, not definitive risks to specific individuals or locations. More information on the Air Toxics Data Update can be found at: <https://www.epa.gov/haps/air-toxics-data-update>.

**Sites reporting to EPA within defined area:**

Superfund .....	1
Hazardous Waste, Treatment, Storage, and Disposal Facilities .....	0
Water Dischargers .....	9
Air Pollution .....	0
Brownfields .....	0
Toxic Release Inventory .....	0

**Other community features within defined area:**

Schools .....	1
Hospitals .....	0
Places of Worship .....	0

**Other environmental data:**

Air Non-attainment .....	No
Impaired Waters .....	Yes

Selected location contains American Indian Reservation Lands* .....	Yes
Selected location contains a "Justice40 (CEJST)" disadvantaged community .....	Yes
Selected location contains an EPA IRA disadvantaged community .....	Yes

Report for 5 miles Ring Centered at 35.175464,-107.326561  
 Report produced September 17, 2024 using EJScreen Version 2.3

## EJScreen Environmental and Socioeconomic Indicators Data

### HEALTH INDICATORS

INDICATOR	VALUE	STATE AVERAGE	STATE PERCENTILE	US AVERAGE	US PERCENTILE
Low Life Expectancy	21%	19%	70	20%	69
Heart Disease	7.9	5.9	90	5.8	87
Asthma	12.8	11.2	90	10.3	94
Cancer	6.3	6.1	59	6.4	47
Persons with Disabilities	25.7%	17.1%	90	13.7%	95

### CLIMATE INDICATORS

INDICATOR	VALUE	STATE AVERAGE	STATE PERCENTILE	US AVERAGE	US PERCENTILE
Flood Risk	11%	9%	71	12%	68
Wildfire Risk	62%	58%	41	14%	87

### CRITICAL SERVICE GAPS

INDICATOR	VALUE	STATE AVERAGE	STATE PERCENTILE	US AVERAGE	US PERCENTILE
Broadband Internet	65%	20%	97	13%	99
Lack of Health Insurance	13%	10%	75	9%	79
Housing Burden	No	N/A	N/A	N/A	N/A
Transportation Access Burden	Yes	N/A	N/A	N/A	N/A
Food Desert	No	N/A	N/A	N/A	N/A

Report for 5 miles Ring Centered at 35.175464,-107.326561

Report produced September 17, 2024 using EJScreen Version 2.3

Location: User-specified point center at 35.175464, -107.326561  
 Ring (buffer): 5-miles radius  
 Description: JJ No. 1 Mine NM0033

Summary of ACS Estimates		2018 - 2022
Population		952
Population Density (per sq. mile)		10
People of Color Population		894
% People of Color Population		94%
Households		325
Housing Units		398
Housing Units Built Before 1950		101
Per Capita Income		20,099
Land Area (sq. miles) (Source: SF1)		93.82
% Land Area		100%
Water Area (sq. miles) (Source: SF1)		0.08
% Water Area		0%

	2018 - 2022 ACS Estimates	Percent	MOE (±)
<b>Population by Race</b>			
Total	952	100%	639
Population Reporting One Race	916	96%	1,284
White	138	14%	377
Black	43	5%	196
American Indian	722	76%	636
Asian	0	0%	13
Pacific Islander	0	0%	13
Some Other Race	13	1%	49
Population Reporting Two or More Races	37	4%	162
Total Hispanic Population	160	17%	449
Total Non-Hispanic Population	792		
White Alone	58	6%	141
Black Alone	43	5%	196
American Indian Alone	689	72%	627
Non-Hispanic Asian Alone	0	0%	13
Pacific Islander Alone	0	0%	13
Other Race Alone	0	0%	13
Two or More Races Alone	2	0%	77
<b>Population by Sex</b>			
Male	511	54%	410
Female	441	46%	342
<b>Population by Age</b>			
Age 0-4	20	2%	72
Age 0-17	178	19%	186
Age 18+	774	81%	419
Age 65+	184	19%	203

**Data Note:** Detail may not sum to totals due to rounding. Hispanic population can be of any race.

N/A means not available. **Source:** U.S. Census Bureau, American Community Survey (ACS) 2018 - 2022

Location: User-specified point center at 35.175464, -107.326561  
 Ring (buffer): 5-miles radius  
 Description: JJ No. 1 Mine NM0033

	2018 - 2022 ACS Estimates	Percent	MOE (±)
<b>Population 25+ by Educational Attainment</b>			
Total	675	100%	401
Less than 9th Grade	23	3%	63
9th - 12th Grade, No Diploma	37	5%	107
High School Graduate	342	51%	270
Some College, No Degree	175	26%	186
Associate Degree	78	12%	105
Bachelor's Degree or more	20	3%	89
<b>Population Age 5+ Years by Ability to Speak English</b>			
Total	932	100%	627
Speak only English	425	46%	409
Non-English at Home <sup>1+2+3+4</sup>	507	54%	392
<sup>1</sup> Speak English "very well"	469	50%	381
<sup>2</sup> Speak English "well"	28	3%	81
<sup>3</sup> Speak English "not well"	10	1%	51
<sup>4</sup> Speak English "not at all"	0	0%	45
<sup>3+4</sup> Speak English "less than well"	10	1%	68
<sup>2+3+4</sup> Speak English "less than very well"	37	4%	106
<b>Limited English Speaking Households*</b>			
Total	13	100%	64
Speak Spanish	0	0%	13
Speak Other Indo-European Languages	0	0%	13
Speak Asian-Pacific Island Languages	0	0%	13
Speak Other Languages	13	100%	60
<b>Households by Household Income</b>			
Household Income Base	325	100%	240
< \$15,000	70	21%	98
\$15,000 - \$25,000	5	2%	70
\$25,000 - \$50,000	93	29%	140
\$50,000 - \$75,000	59	18%	213
\$75,000 +	98	30%	124
<b>Occupied Housing Units by Tenure</b>			
Total	325	100%	240
Owner Occupied	282	87%	163
Renter Occupied	43	13%	204
<b>Employed Population Age 16+ Years</b>			
Total	786	100%	488
In Labor Force	353	45%	398
Civilian Unemployed in Labor Force	29	8%	104
Not In Labor Force	433	55%	295

**Data Note:** Detail may not sum to totals due to rounding. Hispanic population can be of anyrace.

N/A means not available. **Source:** U.S. Census Bureau, American Community Survey (ACS)

\*Households in which no one 14 and over speaks English "very well" or speaks English only.

Location: User-specified point center at 35.175464, -107.326561

Ring (buffer): 5-miles radius

Description: JJ No. 1 Mine NM0033

	2018 - 2022 ACS Estimates	Percent	MOE (±)
<b>Population by Language Spoken at Home*</b>			
Total (persons age 5 and above)	N/A	N/A	N/A
English	N/A	N/A	N/A
Spanish	N/A	N/A	N/A
French, Haitian, or Cajun	N/A	N/A	N/A
German or other West Germanic	N/A	N/A	N/A
Russian, Polish, or Other Slavic	N/A	N/A	N/A
Other Indo-European	N/A	N/A	N/A
Korean	N/A	N/A	N/A
Chinese (including Mandarin, Cantonese)	N/A	N/A	N/A
Vietnamese	N/A	N/A	N/A
Tagalog (including Filipino)	N/A	N/A	N/A
Other Asian and Pacific Island	N/A	N/A	N/A
Arabic	N/A	N/A	N/A
Other and Unspecified	N/A	N/A	N/A
Total Non-English	N/A	N/A	N/A

**Data Note:** Detail may not sum to totals due to rounding. Hispanic population can be of any race.  
 N/A means not available. **Source:** U.S. Census Bureau, American Community Survey (ACS) 2018 - 2022.  
 \*Population by Language Spoken at Home is available at the census tract summary level and up.