



EJScreen Community Report

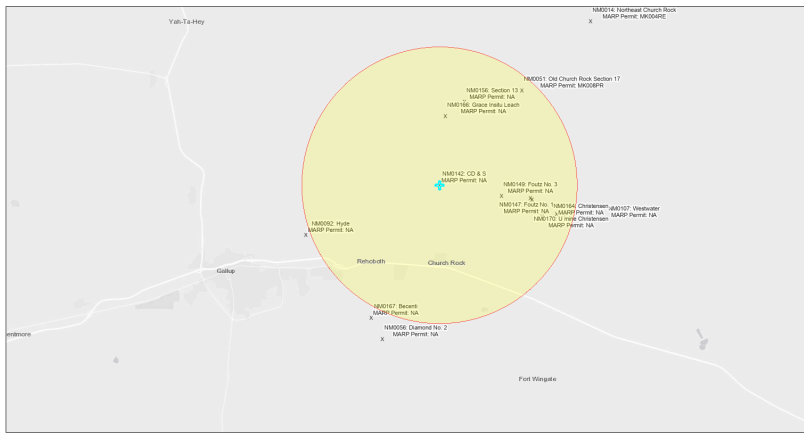
This report provides environmental and socioeconomic information for user-defined areas, and combines that data into environmental justice and supplemental indexes.

CD & S NM0142

5 miles Ring Centered at 35.572488,-108.605862

Population: 3,545

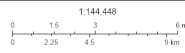
Area in square miles: 78.53



September 24, 2024

CD & S NM0142

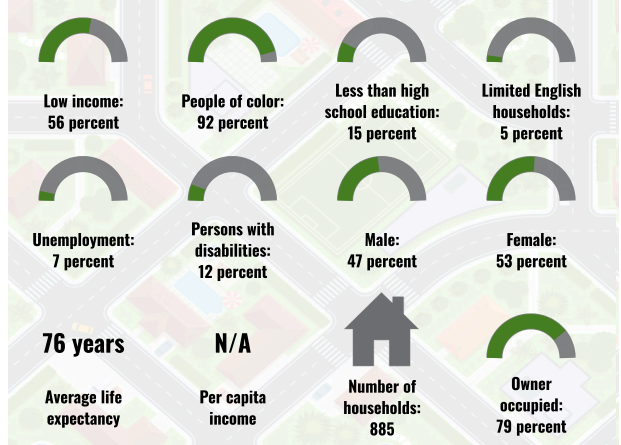
X Abandoned Uranium Mines



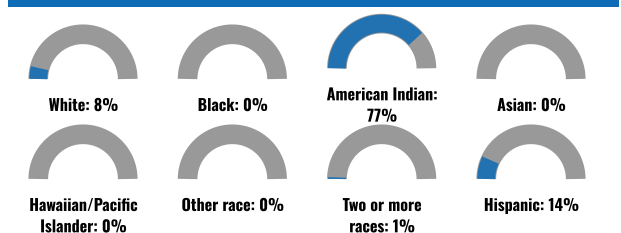
1:144,448

Bureau of Land Management, EPA, HHS, Census, USGS, BIA, IHS, New Mexico Energy, Storage and Natural Resources Department, EPA, HHS, IHS

COMMUNITY INFORMATION



BREAKDOWN BY RACE



BREAKDOWN BY AGE



LIMITED ENGLISH SPEAKING BREAKDOWN



LANGUAGES SPOKEN AT HOME

LANGUAGE	PERCENT
English	57%
Spanish	5%
Other and Unspecified	38%
Total Non-English	43%

Notes: Numbers may not sum to totals due to rounding. Hispanic population can be of any race. Source: U.S. Census Bureau American Community Survey (ACS) 2018-2022. Life expectancy data comes from the Centers for Disease Control.

Report for 5 miles Ring Centered at 35.572488,-108.605862

Report produced September 24, 2024 using EJScreen Version 2.3

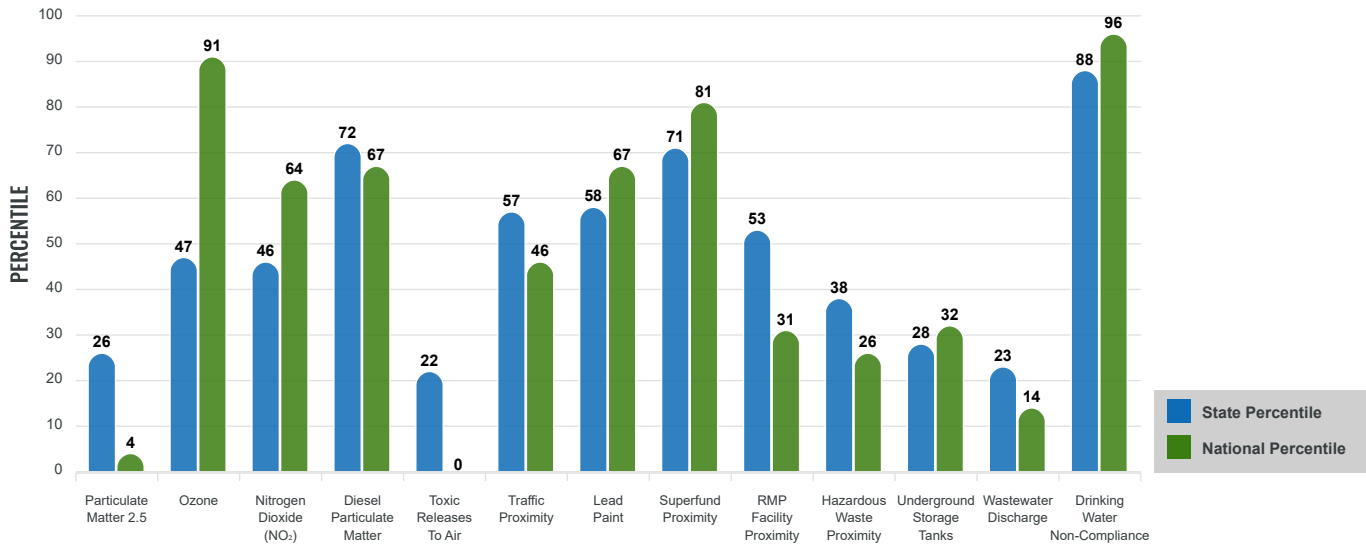
Environmental Justice & Supplemental Indexes

The environmental justice and supplemental indexes are a combination of environmental and socioeconomic information. There are thirteen EJ indexes and supplemental indexes in EJScreen reflecting the 13 environmental indicators. The indexes for a selected area are compared to those for all other locations in the state or nation. For more information and calculation details on the EJ and supplemental indexes, please visit the [EJScreen website](#).

EJ INDEXES

The EJ indexes help users screen for potential EJ concerns. To do this, the EJ index combines data on low income and people of color populations with a single environmental indicator.

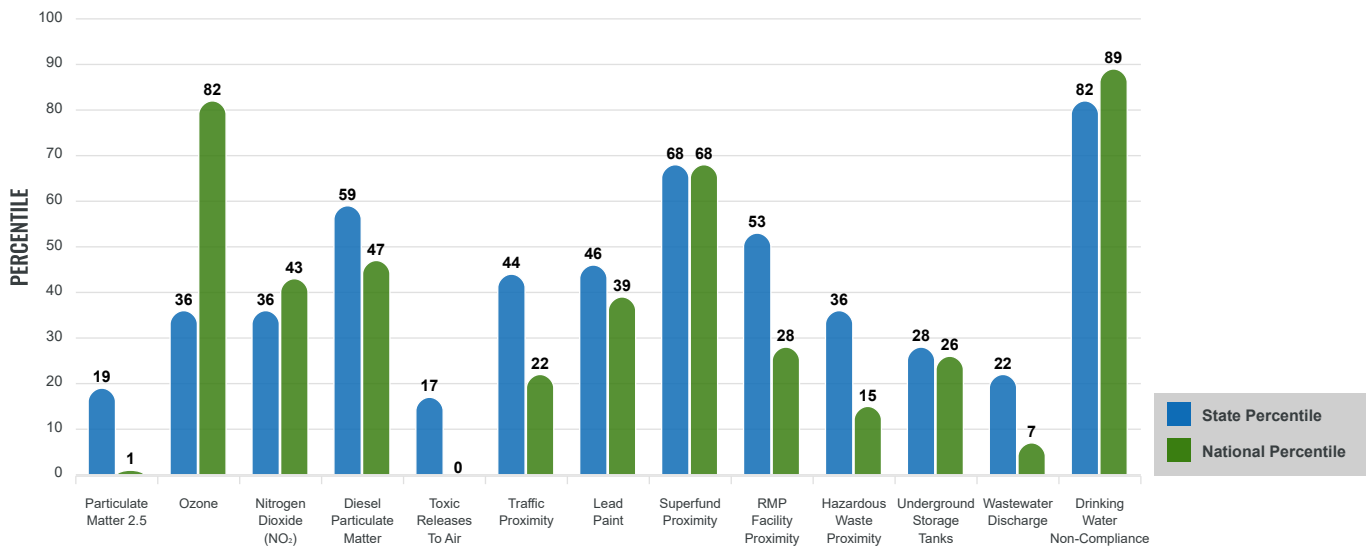
EJ INDEXES FOR THE SELECTED LOCATION



SUPPLEMENTAL INDEXES

The supplemental indexes offer a different perspective on community-level vulnerability. They combine data on percent low income, percent persons with disabilities, percent less than high school education, percent limited English speaking, and percent low life expectancy with a single environmental indicator.

SUPPLEMENTAL INDEXES FOR THE SELECTED LOCATION



Report for 5 miles Ring Centered at 35.572488,-108.605862

Report produced September 24, 2024 using EJScreen Version 2.3

EJScreen Environmental and Socioeconomic Indicators Data

SELECTED VARIABLES	VALUE	STATE AVERAGE	PERCENTILE IN STATE	USA AVERAGE	PERCENTILE IN USA
ENVIRONMENTAL BURDEN INDICATORS					
Particulate Matter 2.5 (µg/m ³)	4.95	6.11	15	8.45	1
Ozone (ppb)	63.5	65.3	30	61.8	65
Nitrogen Dioxide (NO ₂) (ppbv)	5.9	8.1	28	7.8	32
Diesel Particulate Matter (µg/m ³)	0.115	0.187	51	0.191	34
Toxic Releases to Air (toxicity-weighted concentration)	0	29	13	4,600	0
Traffic Proximity (daily traffic count/distance to road)	100,000	730,000	38	1,700,000	17
Lead Paint (% Pre-1960 Housing)	0.079	0.19	44	0.3	32
Superfund Proximity (site count/km distance)	0.075	0.34	62	0.39	56
RMP Facility Proximity (facility count/km distance)	0.012	0.2	53	0.57	28
Hazardous Waste Proximity (facility count/km distance)	0.022	1.2	35	3.5	15
Underground Storage Tanks (count/km ²)	0.011	2.8	31	3.6	27
Wastewater Discharge (toxicity-weighted concentration/m distance)	0.11	990000	38	700000	15
Drinking Water Non-Compliance (points)	0.62	5.6	73	2.2	76
SOCIOECONOMIC INDICATORS					
Demographic Index USA	2.77	N/A	N/A	1.34	92
Supplemental Demographic Index USA	2	N/A	N/A	1.64	73
Demographic Index State	3.14	2.16	85	N/A	N/A
Supplemental Demographic Index State	1.76	1.62	61	N/A	N/A
People of Color	92%	62%	86	40%	90
Low Income	56%	39%	75	30%	86
Unemployment Rate	7%	6%	63	6%	69
Limited English Speaking Households	5%	6%	64	5%	75
Less Than High School Education	15%	14%	64	11%	72
Under Age 5	6%	5%	67	5%	62
Over Age 64	10%	20%	20	18%	24

*Diesel particulate matter index is from the EPA's Air Toxics Data Update, which is the Agency's ongoing, comprehensive evaluation of air toxics in the United States. This effort aims to prioritize air toxics, emission sources, and locations of interest for further study. It is important to remember that the air toxics data presented here provide broad estimates of health risks over geographic areas of the country, not definitive risks to specific individuals or locations. More information on the Air Toxics Data Update can be found at: <https://www.epa.gov/haps/air-toxics-data-update>.

Sites reporting to EPA within defined area:

Superfund	0
Hazardous Waste, Treatment, Storage, and Disposal Facilities	0
Water Dischargers	59
Air Pollution	6
Brownfields	0
Toxic Release Inventory	0

Other community features within defined area:

Schools	1
Hospitals	0
Places of Worship	2

Other environmental data:

Air Non-attainment	No
Impaired Waters	Yes

Selected location contains American Indian Reservation Lands*	Yes
Selected location contains a "Justice40 (CEJST)" disadvantaged community	Yes
Selected location contains an EPA IRA disadvantaged community	Yes

*Report for 5 miles Ring Centered at 35.572488,-108.605862
Report produced September 24, 2024 using EJScreen Version 2.3*

EJScreen Environmental and Socioeconomic Indicators Data

HEALTH INDICATORS

INDICATOR	VALUE	STATE AVERAGE	STATE PERCENTILE	US AVERAGE	US PERCENTILE
Low Life Expectancy	22%	19%	74	20%	73
Heart Disease	8.2	5.9	92	5.8	90
Asthma	15.1	11.2	95	10.3	99
Cancer	5.2	6.1	26	6.4	24
Persons with Disabilities	11.5%	17.1%	20	13.7%	41

CLIMATE INDICATORS

INDICATOR	VALUE	STATE AVERAGE	STATE PERCENTILE	US AVERAGE	US PERCENTILE
Flood Risk	9%	9%	65	12%	62
Wildfire Risk	0%	58%	28	14%	78

CRITICAL SERVICE GAPS

INDICATOR	VALUE	STATE AVERAGE	STATE PERCENTILE	US AVERAGE	US PERCENTILE
Broadband Internet	44%	20%	90	13%	97
Lack of Health Insurance	20%	10%	91	9%	92
Housing Burden	No	N/A	N/A	N/A	N/A
Transportation Access Burden	Yes	N/A	N/A	N/A	N/A
Food Desert	Yes	N/A	N/A	N/A	N/A

Report for 5 miles Ring Centered at 35.572488,-108.605862

Report produced September 24, 2024 using EJScreen Version 2.3

Location: User-specified point center at 35.572488, -108.605862
 Ring (buffer): 5-miles radius
 Description: CD & S NM0142

Summary of ACS Estimates		2018 - 2022
Population		3,545
Population Density (per sq. mile)		43
People of Color Population		3,268
% People of Color Population		92%
Households		885
Housing Units		1,061
Housing Units Built Before 1950		56
Per Capita Income		N/A
Land Area (sq. miles) (Source: SF1)		82.32
% Land Area		100%
Water Area (sq. miles) (Source: SF1)		0.03
% Water Area		0%

	2018 - 2022 ACS Estimates	Percent	MOE (±)
Population by Race			
Total	3,545	100%	522
Population Reporting One Race	3,423	97%	906
White	455	13%	264
Black	14	0%	19
American Indian	2,807	79%	468
Asian	0	0%	13
Pacific Islander	0	0%	13
Some Other Race	147	4%	129
Population Reporting Two or More Races	122	3%	276
Total Hispanic Population	480	14%	248
Total Non-Hispanic Population	3,064		
White Alone	277	8%	198
Black Alone	14	0%	19
American Indian Alone	2,714	77%	468
Non-Hispanic Asian Alone	0	0%	13
Pacific Islander Alone	0	0%	13
Other Race Alone	11	0%	28
Two or More Races Alone	48	1%	200
Population by Sex			
Male	1,666	47%	389
Female	1,878	53%	279
Population by Age			
Age 0-4	213	6%	66
Age 0-17	1,043	29%	234
Age 18+	2,502	71%	283
Age 65+	343	10%	88

Data Note: Detail may not sum to totals due to rounding. Hispanic population can be of any race.

N/A means not available. **Source:** U.S. Census Bureau, American Community Survey (ACS) 2018 - 2022

Location: User-specified point center at 35.572488, -108.605862

Ring (buffer): 5-miles radius

Description: CD & S NM0142

	2018 - 2022 ACS Estimates	Percent	MOE (±)
Population 25+ by Educational Attainment			
Total	2,188	100%	334
Less than 9th Grade	90	4%	55
9th - 12th Grade, No Diploma	236	11%	52
High School Graduate	726	33%	159
Some College, No Degree	529	24%	130
Associate Degree	253	12%	110
Bachelor's Degree or more	354	16%	157
Population Age 5+ Years by Ability to Speak English			
Total	3,331	100%	489
Speak only English	1,798	54%	383
Non-English at Home ¹⁺²⁺³⁺⁴	1,533	46%	231
¹ Speak English "very well"	1,276	38%	218
² Speak English "well"	170	5%	72
³ Speak English "not well"	61	2%	58
⁴ Speak English "not at all"	27	1%	52
³⁺⁴ Speak English "less than well"	87	3%	74
²⁺³⁺⁴ Speak English "less than very well"	257	8%	96
Limited English Speaking Households*			
Total	44	100%	37
Speak Spanish	0	0%	29
Speak Other Indo-European Languages	0	0%	13
Speak Asian-Pacific Island Languages	0	0%	13
Speak Other Languages	44	100%	19
Households by Household Income			
Household Income Base	885	100%	120
< \$15,000	176	20%	108
\$15,000 - \$25,000	85	10%	53
\$25,000 - \$50,000	153	17%	49
\$50,000 - \$75,000	120	14%	55
\$75,000 +	351	40%	125
Occupied Housing Units by Tenure			
Total	885	100%	120
Owner Occupied	696	79%	105
Renter Occupied	189	21%	95
Employed Population Age 16+ Years			
Total	2,597	100%	358
In Labor Force	1,333	51%	279
Civilian Unemployed in Labor Force	89	7%	85
Not In Labor Force	1,264	49%	222

Data Note: Detail may not sum to totals due to rounding. Hispanic population can be of anyrace.

N/A means not available. **Source:** U.S. Census Bureau, American Community Survey (ACS)

*Households in which no one 14 and over speaks English "very well" or speaks English only.

Location: User-specified point center at 35.572488, -108.605862

Ring (buffer): 5-miles radius

Description: CD & S NM0142

	2018 - 2022 ACS Estimates	Percent	MOE (±)
Population by Language Spoken at Home*			
Total (persons age 5 and above)	4,052	100%	489
English	2,321	57%	389
Spanish	187	5%	139
French, Haitian, or Cajun	3	0%	13
German or other West Germanic	5	0%	13
Russian, Polish, or Other Slavic	11	0%	18
Other Indo-European	0	0%	13
Korean	0	0%	13
Chinese (including Mandarin, Cantonese)	0	0%	13
Vietnamese	0	0%	13
Tagalog (including Filipino)	0	0%	13
Other Asian and Pacific Island	0	0%	13
Arabic	0	0%	13
Other and Unspecified	1,525	38%	226
Total Non-English	1,731	43%	625

Data Note: Detail may not sum to totals due to rounding. Hispanic population can be of any race.
N/A means not available. **Source:** U.S. Census Bureau, American Community Survey (ACS) 2018 - 2022.
*Population by Language Spoken at Home is available at the census tract summary level and up.