

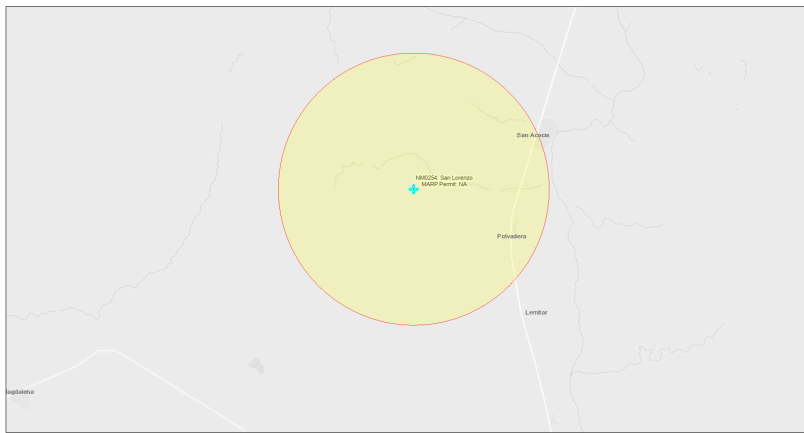


EJScreen Community Report

This report provides environmental and socioeconomic information for user-defined areas, and combines that data into environmental justice and supplemental indexes.

San Lorenzo NM0254

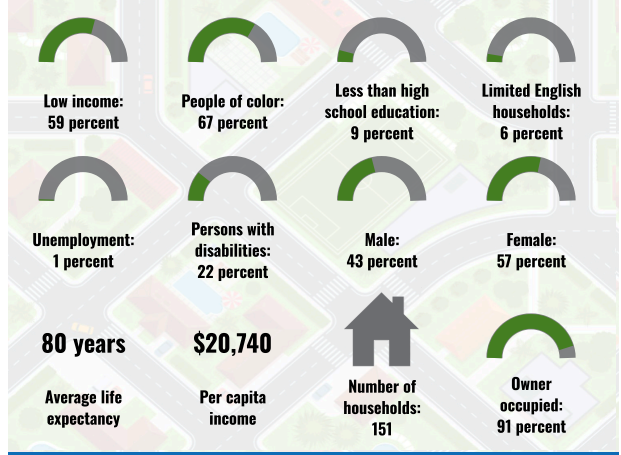
5 miles Ring Centered at 34.225085,-106.987566
 Population: 491
 Area in square miles: 78.53



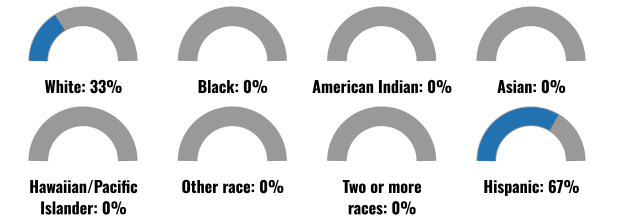
September 25, 2024
 * San Lorenzo NM0254
 * Abandoned Uranium Mines

1:144,448
 Bureau of Land Management, Esri, HERE, Garmin, IGN, IBM, IPS, Intel, Mapbox, Microsoft, Swirex, and National Resources Department, Esri, HERE, IPS

COMMUNITY INFORMATION



BREAKDOWN BY RACE



BREAKDOWN BY AGE



LIMITED ENGLISH SPEAKING BREAKDOWN



LANGUAGES SPOKEN AT HOME

LANGUAGE	PERCENT
No language data available.	

Notes: Numbers may not sum to totals due to rounding. Hispanic population can be of any race. Source: U.S. Census Bureau, American Community Survey (ACS) 2018-2022. Life expectancy data comes from the Centers for Disease Control.

Report for 5 miles Ring Centered at 34.225085,-106.987566
 Report produced September 25, 2024 using EJScreen Version 2.3

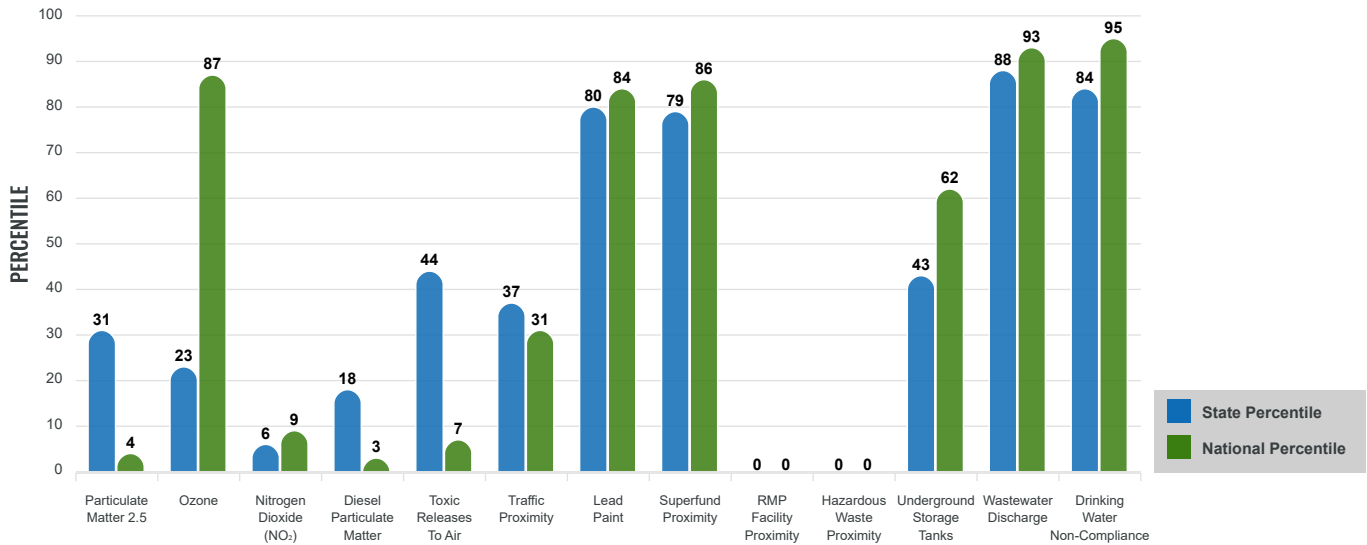
Environmental Justice & Supplemental Indexes

The environmental justice and supplemental indexes are a combination of environmental and socioeconomic information. There are thirteen EJ indexes and supplemental indexes in EJScreen reflecting the 13 environmental indicators. The indexes for a selected area are compared to those for all other locations in the state or nation. For more information and calculation details on the EJ and supplemental indexes, please visit the [EJScreen website](#).

EJ INDEXES

The EJ indexes help users screen for potential EJ concerns. To do this, the EJ index combines data on low income and people of color populations with a single environmental indicator.

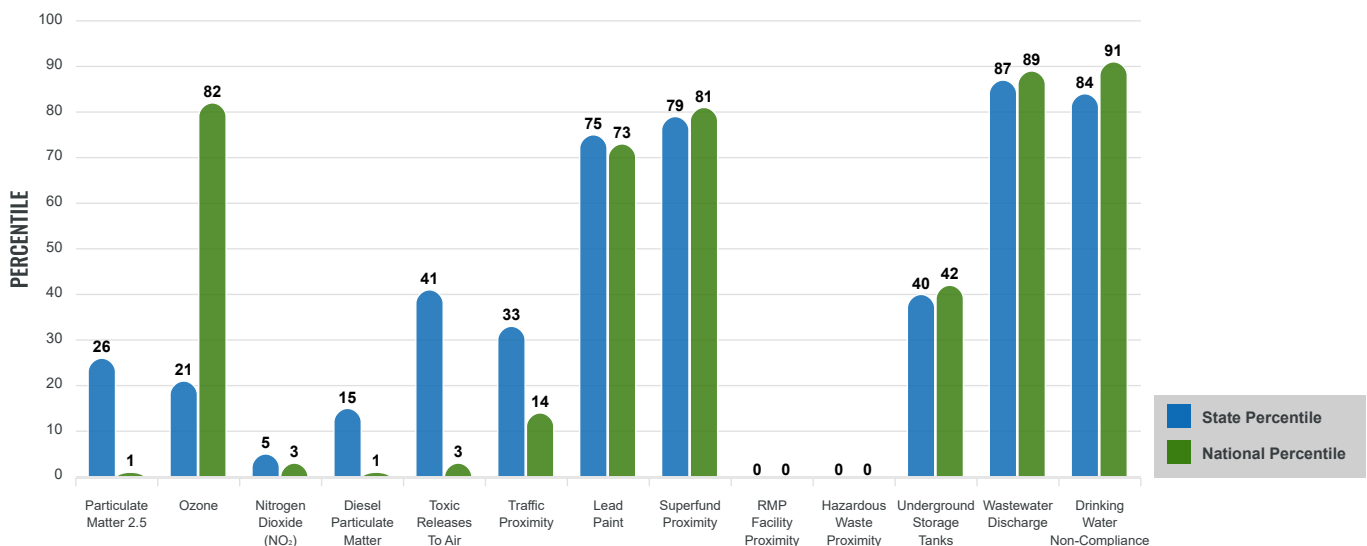
EJ INDEXES FOR THE SELECTED LOCATION



SUPPLEMENTAL INDEXES

The supplemental indexes offer a different perspective on community-level vulnerability. They combine data on percent low income, percent persons with disabilities, percent less than high school education, percent limited English speaking, and percent low life expectancy with a single environmental indicator.

SUPPLEMENTAL INDEXES FOR THE SELECTED LOCATION



Report for 5 miles Ring Centered at 34.225085,-106.987566

Report produced September 25, 2024 using EJScreen Version 2.3

EJScreen Environmental and Socioeconomic Indicators Data

SELECTED VARIABLES	VALUE	STATE AVERAGE	PERCENTILE IN STATE	USA AVERAGE	PERCENTILE IN USA
ENVIRONMENTAL BURDEN INDICATORS					
Particulate Matter 2.5 (µg/m ³)	4.99	6.11	16	8.45	1
Ozone (ppb)	62.8	65.3	16	61.8	61
Nitrogen Dioxide (NO ₂) (ppbv)	2.2	8.1	4	7.8	2
Diesel Particulate Matter (µg/m ³)	0.0222	0.187	10	0.191	1
Toxic Releases to Air (toxicity-weighted concentration)	0.086	29	31	4,600	2
Traffic Proximity (daily traffic count/distance to road)	33,000	730,000	24	1,700,000	9
Lead Paint (% Pre-1960 Housing)	0.28	0.19	72	0.3	56
Superfund Proximity (site count/km distance)	0.092	0.34	63	0.39	57
RMP Facility Proximity (facility count/km distance)	0	0.2	0	0.57	0
Hazardous Waste Proximity (facility count/km distance)	0	1.2	0	3.5	0
Underground Storage Tanks (count/km ²)	0.00064	2.8	28	3.6	26
Wastewater Discharge (toxicity-weighted concentration/m distance)	2300	990000	81	700000	80
Drinking Water Non-Compliance (points)	0.97	5.6	75	2.2	77
SOCIOECONOMIC INDICATORS					
Demographic Index USA	2.46	N/A	N/A	1.34	87
Supplemental Demographic Index USA	2.13	N/A	N/A	1.64	78
Demographic Index State	2.71	2.16	70	N/A	N/A
Supplemental Demographic Index State	1.84	1.62	65	N/A	N/A
People of Color	67%	62%	55	40%	76
Low Income	59%	39%	78	30%	88
Unemployment Rate	1%	6%	30	6%	29
Limited English Speaking Households	6%	6%	67	5%	77
Less Than High School Education	9%	14%	45	11%	55
Under Age 5	8%	5%	76	5%	74
Over Age 64	22%	20%	66	18%	73

*Diesel particulate matter index is from the EPA's Air Toxics Data Update, which is the Agency's ongoing, comprehensive evaluation of air toxics in the United States. This effort aims to prioritize air toxics, emission sources, and locations of interest for further study. It is important to remember that the air toxics data presented here provide broad estimates of health risks over geographic areas of the country, not definitive risks to specific individuals or locations. More information on the Air Toxics Data Update can be found at: <https://www.epa.gov/haps/air-toxics-data-update>.

Sites reporting to EPA within defined area:

Superfund	0
Hazardous Waste, Treatment, Storage, and Disposal Facilities	0
Water Dischargers	5
Air Pollution	0
Brownfields	0
Toxic Release Inventory	0

Other community features within defined area:

Schools	0
Hospitals	0
Places of Worship	1

Other environmental data:

Air Non-attainment	No
Impaired Waters	No

Selected location contains American Indian Reservation Lands*	No
Selected location contains a "Justice40 (CEJST)" disadvantaged community	Yes
Selected location contains an EPA IRA disadvantaged community	Yes

Report for 5 miles Ring Centered at 34.225085,-106.987566
 Report produced September 25, 2024 using EJScreen Version 2.3

EJScreen Environmental and Socioeconomic Indicators Data

HEALTH INDICATORS

INDICATOR	VALUE	STATE AVERAGE	STATE PERCENTILE	US AVERAGE	US PERCENTILE
Low Life Expectancy	19%	19%	42	20%	44
Heart Disease	7.3	5.9	84	5.8	81
Asthma	10.7	11.2	41	10.3	64
Cancer	6.7	6.1	71	6.4	55
Persons with Disabilities	22%	17.1%	79	13.7%	90

CLIMATE INDICATORS

INDICATOR	VALUE	STATE AVERAGE	STATE PERCENTILE	US AVERAGE	US PERCENTILE
Flood Risk	19%	9%	87	12%	84
Wildfire Risk	76%	58%	45	14%	88

CRITICAL SERVICE GAPS

INDICATOR	VALUE	STATE AVERAGE	STATE PERCENTILE	US AVERAGE	US PERCENTILE
Broadband Internet	41%	20%	88	13%	96
Lack of Health Insurance	9%	10%	54	9%	62
Housing Burden	No	N/A	N/A	N/A	N/A
Transportation Access Burden	Yes	N/A	N/A	N/A	N/A
Food Desert	Yes	N/A	N/A	N/A	N/A

Report for 5 miles Ring Centered at 34.225085,-106.987566

Report produced September 25, 2024 using EJScreen Version 2.3

Location: User-specified point center at 34.225085, -106.987566
 Ring (buffer): 5-miles radius
 Description: San Lorenzo NM0254

Summary of ACS Estimates		2018 - 2022
Population		491
Population Density (per sq. mile)		6
People of Color Population		329
% People of Color Population		67%
Households		151
Housing Units		266
Housing Units Built Before 1950		50
Per Capita Income		20,740
Land Area (sq. miles) (Source: SF1)		80.33
% Land Area		100%
Water Area (sq. miles) (Source: SF1)		0.00
% Water Area		0%

	2018 - 2022 ACS Estimates	Percent	MOE (±)
Population by Race			
Total	491	100%	630
Population Reporting One Race	398	81%	735
White	385	78%	600
Black	0	0%	13
American Indian	0	0%	13
Asian	1	0%	13
Pacific Islander	0	0%	13
Some Other Race	12	2%	83
Population Reporting Two or More Races	93	19%	358
Total Hispanic Population	328	67%	563
Total Non-Hispanic Population	163		
White Alone	162	33%	266
Black Alone	0	0%	13
American Indian Alone	0	0%	13
Non-Hispanic Asian Alone	1	0%	13
Pacific Islander Alone	0	0%	13
Other Race Alone	0	0%	13
Two or More Races Alone	0	0%	13
Population by Sex			
Male	210	43%	375
Female	281	57%	347
Population by Age			
Age 0-4	37	8%	104
Age 0-17	149	30%	240
Age 18+	342	70%	424
Age 65+	110	22%	147

Data Note: Detail may not sum to totals due to rounding. Hispanic population can be of any race.

N/A means not available. **Source:** U.S. Census Bureau, American Community Survey (ACS) 2018 - 2022

Location: User-specified point center at 34.225085, -106.987566

Ring (buffer): 5-miles radius

Description: San Lorenzo NM0254

	2018 - 2022 ACS Estimates	Percent	MOE (±)
Population 25+ by Educational Attainment			
Total	339	100%	424
Less than 9th Grade	8	2%	44
9th - 12th Grade, No Diploma	23	7%	115
High School Graduate	237	70%	362
Some College, No Degree	21	6%	78
Associate Degree	4	1%	23
Bachelor's Degree or more	47	14%	116
Population Age 5+ Years by Ability to Speak English			
Total	454	100%	584
Speak only English	279	61%	348
Non-English at Home ¹⁺²⁺³⁺⁴	175	39%	393
¹ Speak English "very well"	136	30%	325
² Speak English "well"	30	7%	224
³ Speak English "not well"	3	1%	50
⁴ Speak English "not at all"	7	1%	56
³⁺⁴ Speak English "less than well"	10	2%	72
²⁺³⁺⁴ Speak English "less than very well"	39	9%	236
Limited English Speaking Households*			
Total	9	100%	43
Speak Spanish	9	100%	37
Speak Other Indo-European Languages	0	0%	13
Speak Asian-Pacific Island Languages	0	0%	13
Speak Other Languages	0	0%	13
Households by Household Income			
Household Income Base	151	100%	171
< \$15,000	27	18%	89
\$15,000 - \$25,000	26	17%	88
\$25,000 - \$50,000	36	24%	102
\$50,000 - \$75,000	18	12%	56
\$75,000 +	44	29%	112
Occupied Housing Units by Tenure			
Total	151	100%	171
Owner Occupied	138	91%	170
Renter Occupied	13	9%	55
Employed Population Age 16+ Years			
Total	349	100%	452
In Labor Force	122	35%	198
Civilian Unemployed in Labor Force	2	1%	16
Not In Labor Force	227	65%	437

Data Note: Detail may not sum to totals due to rounding. Hispanic population can be of anyrace.

N/A means not available. **Source:** U.S. Census Bureau, American Community Survey (ACS)

*Households in which no one 14 and over speaks English "very well" or speaks English only.

Location: User-specified point center at 34.225085, -106.987566

Ring (buffer): 5-miles radius

Description: San Lorenzo NM0254

	2018 - 2022 ACS Estimates	Percent	MOE (±)
Population by Language Spoken at Home*			
Total (persons age 5 and above)	N/A	N/A	N/A
English	N/A	N/A	N/A
Spanish	N/A	N/A	N/A
French, Haitian, or Cajun	N/A	N/A	N/A
German or other West Germanic	N/A	N/A	N/A
Russian, Polish, or Other Slavic	N/A	N/A	N/A
Other Indo-European	N/A	N/A	N/A
Korean	N/A	N/A	N/A
Chinese (including Mandarin, Cantonese)	N/A	N/A	N/A
Vietnamese	N/A	N/A	N/A
Tagalog (including Filipino)	N/A	N/A	N/A
Other Asian and Pacific Island	N/A	N/A	N/A
Arabic	N/A	N/A	N/A
Other and Unspecified	N/A	N/A	N/A
Total Non-English	N/A	N/A	N/A

Data Note: Detail may not sum to totals due to rounding. Hispanic population can be of any race.
 N/A means not available. **Source:** U.S. Census Bureau, American Community Survey (ACS) 2018 - 2022.
 *Population by Language Spoken at Home is available at the census tract summary level and up.