



NEW MEXICO ENVIRONMENT DEPARTMENT
GROUND WATER QUALITY BUREAU
PUBLIC INVOLVEMENT PLAN
(PIP)



Facility Name: Albuquerque Bernalillo County Water Utility Authority
(ABCWUA) Large Scale Recharge Project

Facility Location: 6000 Alexander Blvd. NE,
Albuquerque, NM
Section 34, Township 11 North, Range 3 East

County: Bernalillo County

Responsible Party: Albuquerque Bernalillo County Water Utility Authority
Danielle Shuryn, Compliance Division Manager
P.O. Box 568
Albuquerque, NM 87103

Agency: Ground Water Quality Bureau
Pollution Prevention Section

GWQB Action: Permitting – Renew and Modification
DP-1887

Bureau Contact: Jennifer Fullam, Reuse Team Leader
(505) 670-2496
Jennifer.fullam@env.nm.gov or pps.general@env.nm.gov

Main bureau telephone number:
(505) 827-2900

EFFECTIVE DATE: July 22, 2019

REVISION DATE: November 25, 2024

/s/ Jason Herman for

Justin D. Ball, Chief
Ground Water Quality Bureau

Element 1 – Public Involvement Plan (PIP) Overview

The New Mexico Environment Department (NMED or Department), Ground Water Quality Bureau (Bureau) has developed this PIP for the application for renewal and modification of the Ground Water Discharge Permit for the Albuquerque Bernalillo County Water Utility Authority (ABCWUA) Large-Scale Recharge Project. The permit for this facility is referred to as DP-1887.

The purpose of this PIP is to plan for providing public participation opportunities and information that may be needed for the community to participate in the permitting process for this facility. This PIP identifies information about the community and resources needed by the Bureau to incorporate community participation activities into the decision-making process. This PIP is developed in accordance with the Department's *Public Participation Policy* (Policy 07-13 or Policy), and incorporates the requirements of the Policy, as well as applicable regulatory and statutory public participation requirements.

This PIP implements the “elements” set forth in the Policy. Those elements include:

1. An overview of the Public Involvement Plan for the community affected by the activity
2. Bureau contact names and contact information, specifically for Limited English Proficiency (LEP) language assistance services (e.g., translation, interpreters) or for disability accommodations
3. A summary of the regulatory public participation framework associated with discharge permits
4. A description of community/stakeholder groups based on results of a preliminary environmental justice (EJ) screening
5. Details about planned public outreach activities

In developing this PIP, community participation needs were assessed to ensure appropriate public outreach. This was accomplished by identifying whether there is a combination of environmental and demographic factors that may impact public participation (e.g., low-income community, minority community, LEP individuals, linguistically isolated households).

Public involvement associated with discharge permits occurs at different stages and in different forms. Public involvement activities required by statute or regulation are mandatory and subject to statutory or regulatory deadlines. Mandatory public involvement activities and associated time requirements relevant to this PIP are noted in the *Table of Mandated Public Involvement Activities* at the end of this PIP.

The Bureau plans to conduct the public involvement activities related to the permitting process outlined in the *Table of Public Involvement Activities* below. The activity timeline and dates are tentative and subject to change.

Table of Public Involvement Activities

Activity	Date
Application Notice (PN-1) See <i>Table of Mandated Public Involvement Activities</i> at the end of this PIP for details.	July 2024
Placement of a hardcopy of the PIP in the local NMED office: District I 121 Tijeras Ave NE, Suite 1000 Albuquerque, NM 87102 (505) 222-9500	December 2024
Notice of availability of draft permit (PN-2) See <i>Table of Mandated Public Involvement Activities</i> .	Within 60 days of determining the application is technically complete. Date to be determined.

All notices for upcoming meetings or hearings will include a statement that any person who requires assistance, an interpreter, or an auxiliary aid to participate in the process may contact a specifically identified Department person to request those services. Requested interpretation services during the meeting and accommodations or services for persons with disabilities will be arranged to the extent possible.

This PIP is a “living” document that may be amended for numerous reasons, including the consideration of public comments and feedback.

Element 2 – Bureau Contact Information

PIP Specific Contacts

The Bureau contact for this discharge permit is:

[Jennifer Fullam, Reuse Team Leader](#)
 NMED Ground Water Quality Bureau
 P.O. Box 5469, Santa Fe, NM 87502-5469
[\(505\) 670-2496](tel:5056702496) / Jennifer.fullam@env.nm.gov / pps.general@env.nm.gov

Non-English Language Speaker Assistance

All public notices will contain a statement that non-English speakers may call the Bureau contact listed above and request language assistance in order to learn more about this permit or the permitting process. Arrangements may be made for document translation or interpretation related to the permitting process as necessary and as resources allow.

Individuals with Disabilities Assistance

All public notices will contain a statement that individuals with disabilities may call the Bureau contact listed above and request assistance needed to participate in activities associated with the permitting process.

The following information will be provided in public notices so that individuals who are deaf, hard of hearing, or have difficulty speaking on the phone can contact the Bureau and ask questions about the activity or proceeding: Telephone conversation assistance is available through Relay New Mexico at no charge for people who are deaf, hard of hearing, or have difficulty speaking on the phone, by calling 1-800-659-1779 (English); 1-800-327-1857 (Spanish); TTY users: 1-800-659-8331.

Websites

Outreach materials and notices will include links to the following website, where the Bureau's public notices and PIP information are posted:

Ground Water Quality Bureau – <https://www.env.nm.gov/public-notices/>

Element 3 – Regulatory Framework for Public Participation Related to the Permitting Process

The public participation regulatory framework associated with the permitting process is identified in the *Table of Mandated Public Involvement Activities* at the end of this PIP. The Table identifies activities subject to statutory or regulatory deadlines, the associated regulatory requirements, and the associated dates or time periods.

Element 4 – Description of Community/Stakeholder Groups Based on the EJSCREEN

EJSCREEN Summary

To provide for adequate public participation opportunities and meaningful involvement of persons in the permitting process, the affected communities must first be identified, informed about proposed environmental actions affecting the community, and invited to share their comments and concerns. The EJSCREEN tool developed by the U.S. Environmental Protection Agency (EPA) helps identify communities that are low income, have minority populations, and have limited English proficiency that may benefit from a variety of approaches for notification and outreach communication. This information is used to help plan for the community's involvement in the public process for environmental activities or actions. In addition to the EJSCREEN results, the Bureau may consider additional information such as the U.S. Census Bureau website or NMED's EJ Mapping Tool.

The Bureau considers the affected community to be those persons living within a 4-mile radius of the discharge site. The results of the EJSCREEN Community Report (attached to this PIP) are summarized in the table below.

EJSCREEN Results for the Affected Community

Total population	171,229
Total number of households	76,439
Percentage People of Color population	58%
Percentage of the population by race	Population reporting one race: White: 42% Black: 2% American Indian: 4% Asian: 4% Hawaiian/Pacific Islander: 0% Some Other Race: 0% Hispanic: 43%
Percentage of Total Non-English Languages Spoken at Home	22%
Percentage of Limited English households	3%
Languages by percentage in Limited English-Speaking Breakdown	Spanish:74% Other Indo-European languages:.....6% Asian-Pacific Island languages:16% Other languages:4%
Percent linguistically isolated population, New Mexico*:	5.1%
Per capita income	\$41,333
Per capita income, USA**	\$35,384

* U.S. Census Bureau. 2020 American Community Survey 5-Year Estimates, Table S1602. Limited English-Speaking Households.

<https://data.census.gov/cedsci/table?q=S1602%3A%20LIMITED%20ENGLISH%20SPEAKING%20HOUSEHOLDS&g=0400000US35&tid=ACST5Y2020.S1602> (date of access: 5/4/2022).

** U.S. Census Bureau. 2020 American Community Survey 5-Year Estimates, Table B19301. Per Capita Income in the Past 12 Months (In 2020 Inflation-Adjusted Dollars).

<https://data.census.gov/cedsci/table?q=per%20capita%20income&tid=ACSDT5Y2020.B19301>. (Date of access: 5/4/2022).

Based on the EJSCREEN results regarding language proficiencies, the Bureau plans to conduct public outreach in accordance with the *Table of Mandated Public Involvement Activities* at the end of this PIP.

Element 5 – Detailed Actions and Outreach Activities with the Affected Public

Public involvement activities required by statute or regulation for this permitting action are listed in the *Table of Mandated Public Involvement Activities* at the end of this document.

Public Participation – Outreach Activities

The Bureau will conduct the following outreach activities during this permitting process:

- Placement of this PIP on the Bureau website and in nearby NMED field office
- Postal mailing and email notices
- Newspaper notices
- Notice posted on NMED website

Newspapers to be utilized in the notification process include:

- Statewide circulation (English): Albuquerque Journal
- Local circulation (English): Albuquerque Journal – Bernalillo County

Local, state, and federal government agencies, tribal entities, land grant officials and colonias will be notified about the permitting process. A list of the agencies and officials notified can be provided upon request.

Indian Tribes, Pueblos and Nations will be notified about the permitting action through the contacts maintained by the Indian Affairs Department at the following URLs:

- <https://www.iad.state.nm.us/pueblo-tribes-and-nations/pueblos/>
- <https://www.iad.state.nm.us/pueblo-tribes-and-nations/navajo/>
- <https://www.iad.state.nm.us/pueblo-tribes-and-nations/apaches/>

Timelines and methods for submitting public comments are specified in the *Table of Mandated Public Involvement Activities*. Final discharge permit documents will be available from the Bureau's contact identified in Element 2 of this PIP.

Postal Mailing or E-Mailing of Notices to Persons on the Facility-Specific Mailing List

The Bureau solicits the names and contact information of interested parties with all public notices. The Bureau maintains those names on a Facility-Specific Mailing List and provides the individuals with information about regulatory activities for the facility. Individuals, organizations, and other interested parties are added to the mailing list as requested. All public notices will contain a statement directing interested individuals to contact the Bureau contact for this permit if they want to be added to the facility specific mailing list.

Other means of outreach such as fliers announcing public comment periods and/or public meetings or hearings may be posted in locations throughout the community (e.g., local

businesses, schools, libraries) and on the Department’s website, at the Bureau’s discretion after consideration of public interest and input.

PIP Contingency Plan

During a public health emergency or other unforeseen event outside the control of the Department, the Department will make every effort to ensure the public remains involved in and informed of the decision making and permit processes. The purpose of this PIP Contingency Plan is in part to address circumstances when public spaces are closed because of potential human exposure risks. The Department will attempt to identify and utilize alternate methods of document delivery to the public and public viewing when conventional methods and locations are unavailable. When it is unsafe to utilize the physical PIP and document repositories, the Department will consider utilizing electronic delivery methods deemed appropriate for the permitting action. While operating under the PIP Contingency Plan, the PN-2 will include a statement specifying that the PIP Contingency Plan is in effect and that, “instead of placing a copy of the PIP for this permitting action in a public location, NMED will make the PIP available to the community by sending the PIP by email or US mail to any community member requesting a copy. An individual may request a copy of the PIP utilizing the Bureau contact information in this public notice. When making such a request, please specify how you would like the document delivered. If you request a copy of a PIP, you will receive a revised PIP should the PIP be updated in the future.” During the times of potential human exposure risks and the resultant implementation of this PIP Contingency Plan, public meetings and hearings will only be held when or through means by which the Department can ensure the public’s health and safety and this PIP can be fully adhered to.

Attachments

- A copy of the EJSCREEN Community Report, and a map showing the area evaluated.

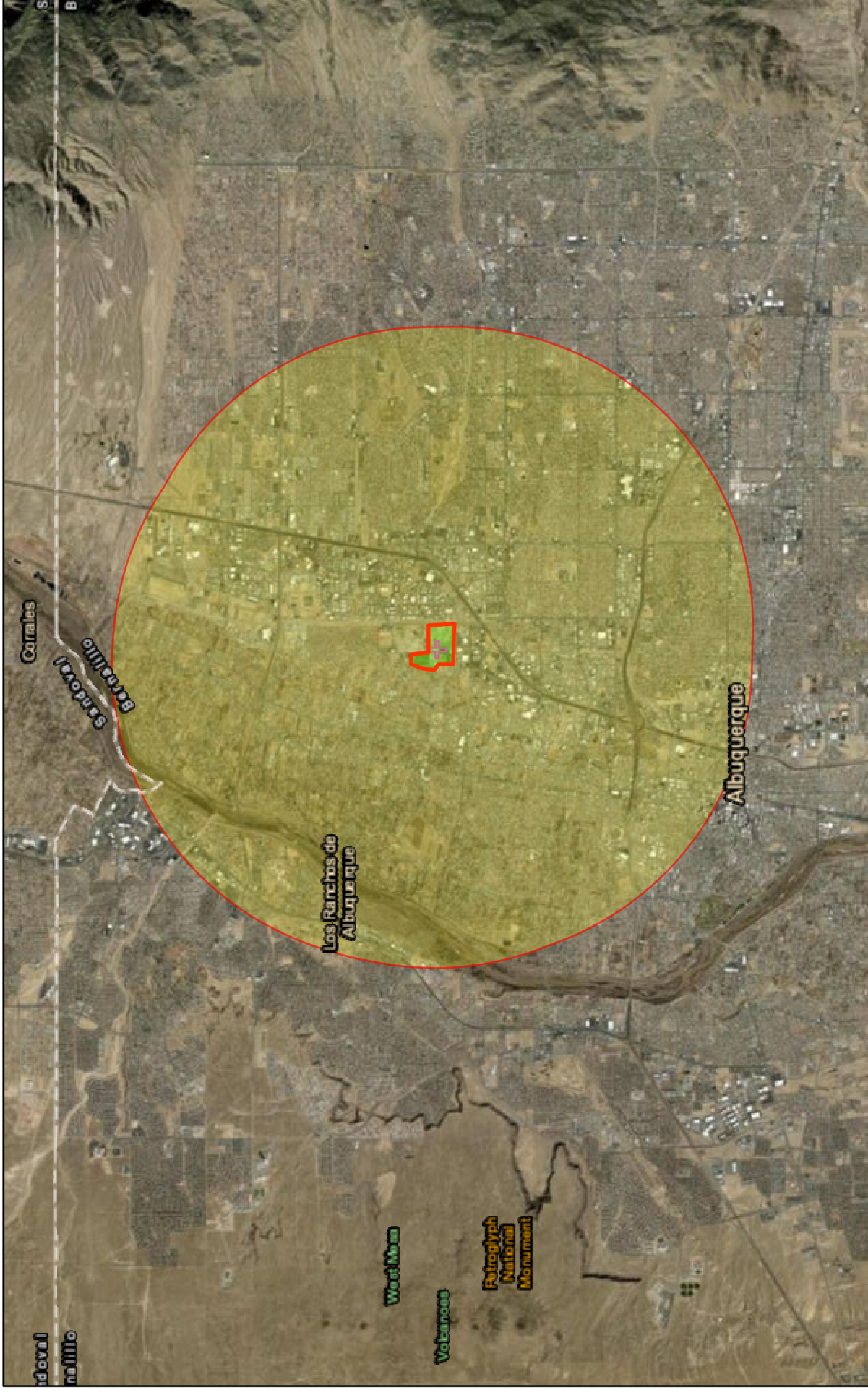
Table of Mandated Public Involvement Activities

Activity	Dates
<p>Application Notice (PN-1): The first notice of the Bureau’s receipt of the permit application – applicant’s obligations at 20.6.2.3108.B and C NMAC – Bureau’s obligations at 20.6.2.3108.E NMAC</p> <ul style="list-style-type: none"> • Signs (PN-1 synopsis¹ in English and Spanish) - Applicant obligation • Mailings to owners of nearby properties - Applicant obligation • Posting a flyer in a location conspicuous to the public – Applicant obligation • Newspaper display ads (PN-1 synopsis² in English and Spanish)- Applicant obligation • NMED website https://www.env.nm.gov/public-notices/ • Notice to government agencies • Notice to interested parties 	<p>Within 30 days of the department deeming the application administratively complete</p>
<p>Permit Notice (PN-2): Notice to the public of the availability of a draft permit for a 30-day review and comment period – the notice will outline the process for requesting a public hearing – obligation at 20.6.2.3108.H through J NMAC</p> <ul style="list-style-type: none"> • NMED website https://www.env.nm.gov/public-notices/ • Newspaper legal ads • Notification of interested parties • Notice to government agencies • Notice to Indian Tribes, Pueblos and Nations 	<p>Within 60 days of the department determining the application is technically complete and drafting a permit.</p>

¹ Suitable for display, the abbreviated format of the PN-1 synopsis does not contain all the information provided by a full public notice, e.g., language assistance or non-discrimination information.

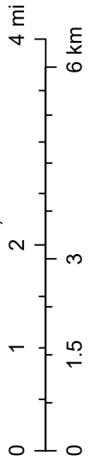
² Suitable for display, the abbreviated format of the PN-1 synopsis does not contain all the information provided by a full public notice, e.g., language assistance or non-discrimination information.

DP-1887 ABCWUA Large-Scale Recharge



10/30/2024

1:144,448



 DP-1887 ABC Water Utility Authority Large-Scale Recharge Project

 Search Result (point)

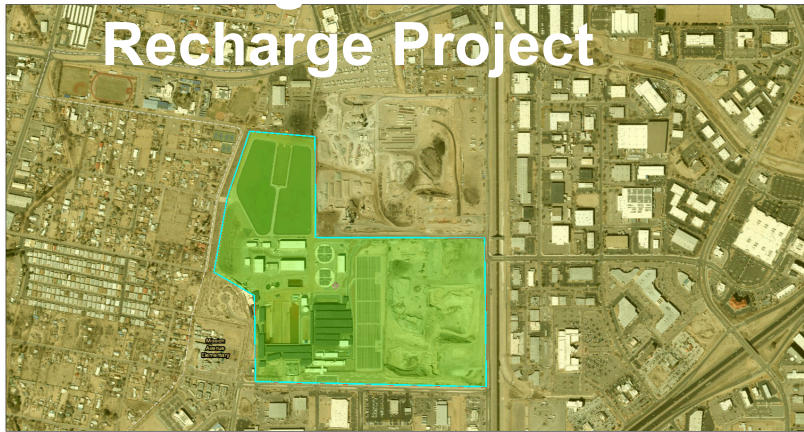


EJScreen Community Report

This report provides environmental and socioeconomic information for user-defined areas, and combines that data into environmental justice and supplemental indexes.

DP-1887 ABC Water Utility Authority

4 miles Ring around the Area
 Population: 171,229
 Area in square miles: 58.79

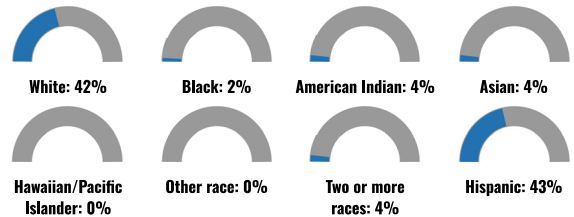


October 30, 2024
 DP-1887 ABC Water Utility Authority Large-Scale Recharge Project
 Search Result (point)
 City of Albuquerque, Env. HEPL, Demco, PC, SBCCO, 190, Behavioral Health, Moor

COMMUNITY INFORMATION



BREAKDOWN BY RACE



BREAKDOWN BY AGE



LIMITED ENGLISH SPEAKING BREAKDOWN



LANGUAGES SPOKEN AT HOME

LANGUAGE	PERCENT
English	78%
Spanish	16%
German or other West Germanic	1%
Other Indo-European	1%
Chinese (including Mandarin, Cantonese)	1%
Vietnamese	1%
Other and Unspecified	2%
Total Non-English	22%

Notes: Numbers may not sum to totals due to rounding. Hispanic population can be of any race. Source: U.S. Census Bureau, American Community Survey (ACS) 2018-2022. Life expectancy data comes from the Centers for Disease Control.

Report for 4 miles Ring around the Area
 Report produced October 30, 2024 using EJScreen Version 2.3

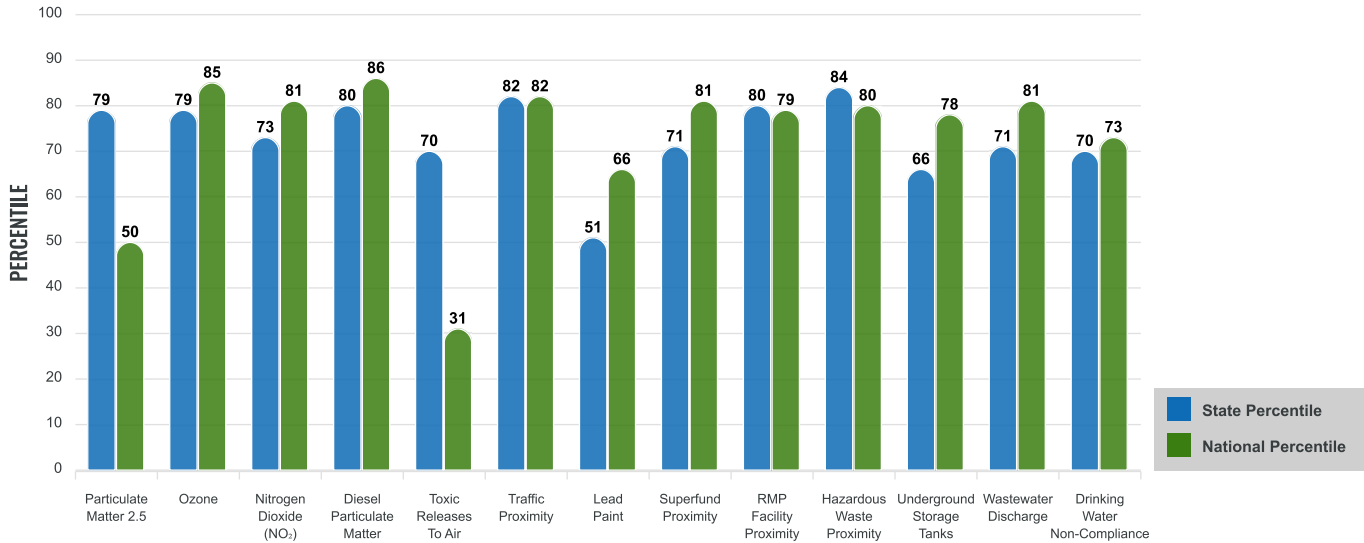
Environmental Justice & Supplemental Indexes

The environmental justice and supplemental indexes are a combination of environmental and socioeconomic information. There are thirteen EJ indexes and supplemental indexes in EJScreen reflecting the 13 environmental indicators. The indexes for a selected area are compared to those for all other locations in the state or nation. For more information and calculation details on the EJ and supplemental indexes, please visit the [EJScreen website](#).

EJ INDEXES

The EJ indexes help users screen for potential EJ concerns. To do this, the EJ index combines data on low income and people of color populations with a single environmental indicator.

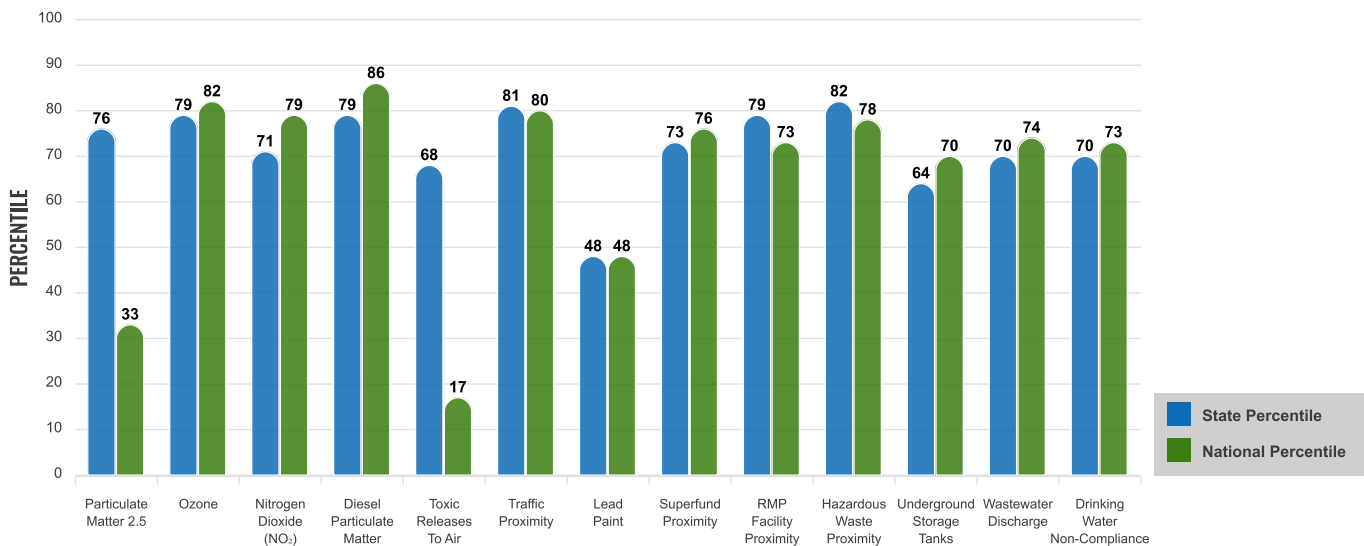
EJ INDEXES FOR THE SELECTED LOCATION



SUPPLEMENTAL INDEXES

The supplemental indexes offer a different perspective on community-level vulnerability. They combine data on percent low income, percent persons with disabilities, percent less than high school education, percent limited English speaking, and percent low life expectancy with a single environmental indicator.

SUPPLEMENTAL INDEXES FOR THE SELECTED LOCATION



Report for 4 miles Ring around the Area

Report produced October 30, 2024 using EJScreen Version 2.3

EJScreen Environmental and Socioeconomic Indicators Data

SELECTED VARIABLES	VALUE	STATE AVERAGE	PERCENTILE IN STATE	USA AVERAGE	PERCENTILE IN USA
ENVIRONMENTAL BURDEN INDICATORS					
Particulate Matter 2.5 (µg/m ³)	7.41	6.11	84	8.45	27
Ozone (ppb)	68.1	65.3	85	61.8	81
Nitrogen Dioxide (NO ₂) (ppbv)	11	8.1	81	7.8	82
Diesel Particulate Matter (µg/m ³)	0.553	0.187	92	0.191	96
Toxic Releases to Air (toxicity-weighted concentration)	36	29	71	4,600	15
Traffic Proximity (daily traffic count/distance to road)	3,100,000	730,000	93	1,700,000	83
Lead Paint (% Pre-1960 Housing)	0.26	0.19	70	0.3	54
Superfund Proximity (site count/km distance)	0.43	0.34	83	0.39	81
RMP Facility Proximity (facility count/km distance)	0.74	0.2	92	0.57	73
Hazardous Waste Proximity (facility count/km distance)	4.7	1.2	93	3.5	77
Underground Storage Tanks (count/km ²)	4.2	2.8	80	3.6	76
Wastewater Discharge (toxicity-weighted concentration/m distance)	2800	990000	81	700000	81
Drinking Water Non-Compliance (points)	0.017	5.6	70	2.2	73
SOCIOECONOMIC INDICATORS					
Demographic Index USA	1.71	N/A	N/A	1.34	70
Supplemental Demographic Index USA	1.6	N/A	N/A	1.64	53
Demographic Index State	1.95	2.16	42	N/A	N/A
Supplemental Demographic Index State	1.35	1.62	37	N/A	N/A
People of Color	58%	62%	42	40%	71
Low Income	34%	39%	42	30%	61
Unemployment Rate	6%	6%	60	6%	66
Limited English Speaking Households	3%	6%	55	5%	68
Less Than High School Education	7%	14%	39	11%	47
Under Age 5	5%	5%	59	5%	53
Over Age 64	19%	20%	57	18%	62

*Diesel particulate matter index is from the EPA's Air Toxics Data Update, which is the Agency's ongoing, comprehensive evaluation of air toxics in the United States. This effort aims to prioritize air toxics, emission sources, and locations of interest for further study. It is important to remember that the air toxics data presented here provide broad estimates of health risks over geographic areas of the country, not definitive risks to specific individuals or locations. More information on the Air Toxics Data Update can be found at: <https://www.epa.gov/haps/air-toxics-data-update>.

Sites reporting to EPA within defined area:

Superfund	1
Hazardous Waste, Treatment, Storage, and Disposal Facilities	16
Water Dischargers	857
Air Pollution	604
Brownfields	6
Toxic Release Inventory	44

Other community features within defined area:

Schools	66
Hospitals	15
Places of Worship	242

Other environmental data:

Air Non-attainment	No
Impaired Waters	Yes

Selected location contains American Indian Reservation Lands*	Yes
Selected location contains a "Justice40 (CEJST)" disadvantaged community	Yes
Selected location contains an EPA IRA disadvantaged community	Yes

Report for 4 miles Ring around the Area

Report produced October 30, 2024 using EJScreen Version 2.3

EJScreen Environmental and Socioeconomic Indicators Data

HEALTH INDICATORS

INDICATOR	VALUE	STATE AVERAGE	STATE PERCENTILE	US AVERAGE	US PERCENTILE
Low Life Expectancy	19%	19%	45	20%	45
Heart Disease	5.1	5.9	27	5.8	37
Asthma	11	11.2	55	10.3	72
Cancer	6.3	6.1	59	6.4	47
Persons with Disabilities	15.4%	17.1%	46	13.7%	66

CLIMATE INDICATORS

INDICATOR	VALUE	STATE AVERAGE	STATE PERCENTILE	US AVERAGE	US PERCENTILE
Flood Risk	6%	9%	55	12%	50
Wildfire Risk	17%	58%	33	14%	82

CRITICAL SERVICE GAPS

INDICATOR	VALUE	STATE AVERAGE	STATE PERCENTILE	US AVERAGE	US PERCENTILE
Broadband Internet	13%	20%	42	13%	61
Lack of Health Insurance	7%	10%	41	9%	51
Housing Burden	Yes	N/A	N/A	N/A	N/A
Transportation Access Burden	Yes	N/A	N/A	N/A	N/A
Food Desert	Yes	N/A	N/A	N/A	N/A

Report for 4 miles Ring around the Area

Report produced October 30, 2024 using EJScreen Version 2.3