

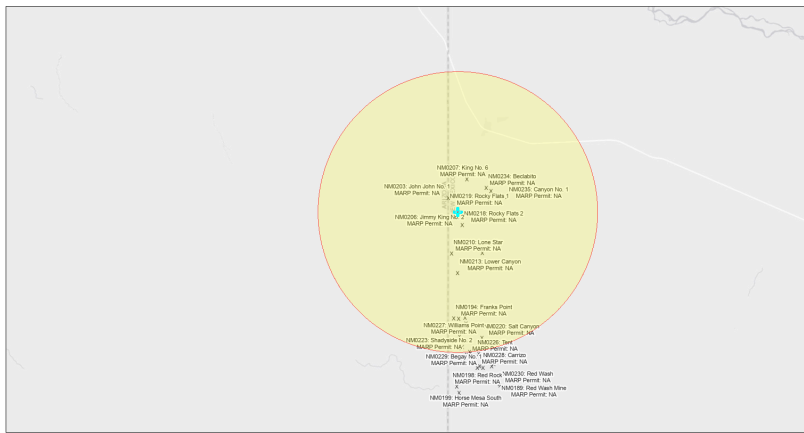


# EJScreen Community Report

This report provides environmental and socioeconomic information for user-defined areas, and combines that data into environmental justice and supplemental indexes.

## Jimmy King No. 2 NM0206

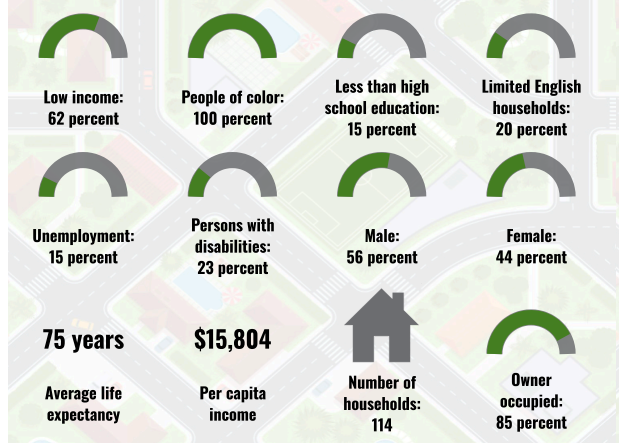
5 miles Ring Centered at 36.789891,-109.039025  
Population: 408  
Area in square miles: 78.53



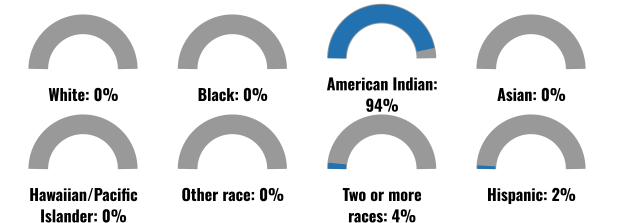
September 25, 2024  
Jimmy King No. 2 NM0206  
\* Abandoned Uranium Mines

0 1.5 3 4.5 6 mi  
0 2.25 4.5 9 km  
Bureau of Land Management, Esri, HERE, Garmin, IGCN, IGN, IPFS, New Mexico Energy, Storage and Natural Resources Department, Esri, HERE, IGP

### COMMUNITY INFORMATION



### BREAKDOWN BY RACE



### BREAKDOWN BY AGE



### LIMITED ENGLISH SPEAKING BREAKDOWN



Notes: Numbers may not sum to totals due to rounding. Hispanic population can be of any race. Source: U.S. Census Bureau American Community Survey (ACS) 2018-2022. Life expectancy data comes from the Centers for Disease Control.

### LANGUAGES SPOKEN AT HOME

LANGUAGE	PERCENT
No language data available.	

Report for 5 miles Ring Centered at 36.789891,-109.039025  
Report produced September 25, 2024 using EJScreen Version 2.3

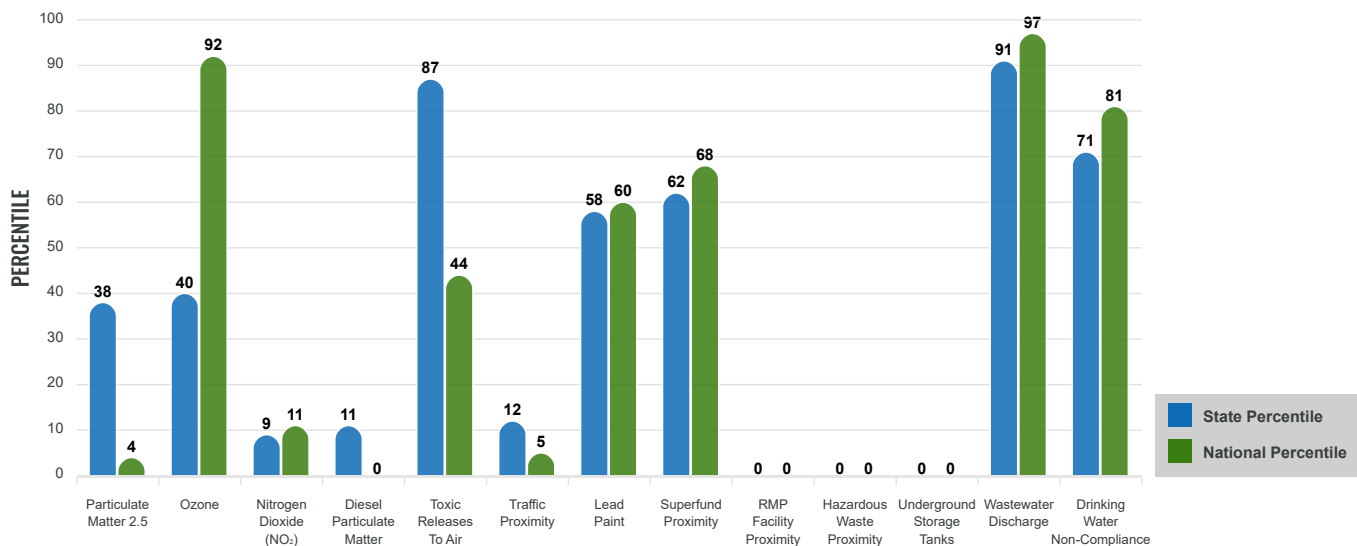
# Environmental Justice & Supplemental Indexes

The environmental justice and supplemental indexes are a combination of environmental and socioeconomic information. There are thirteen EJ indexes and supplemental indexes in EJScreen reflecting the 13 environmental indicators. The indexes for a selected area are compared to those for all other locations in the state or nation. For more information and calculation details on the EJ and supplemental indexes, please visit the [EJScreen website](#).

## EJ INDEXES

The EJ indexes help users screen for potential EJ concerns. To do this, the EJ index combines data on low income and people of color populations with a single environmental indicator.

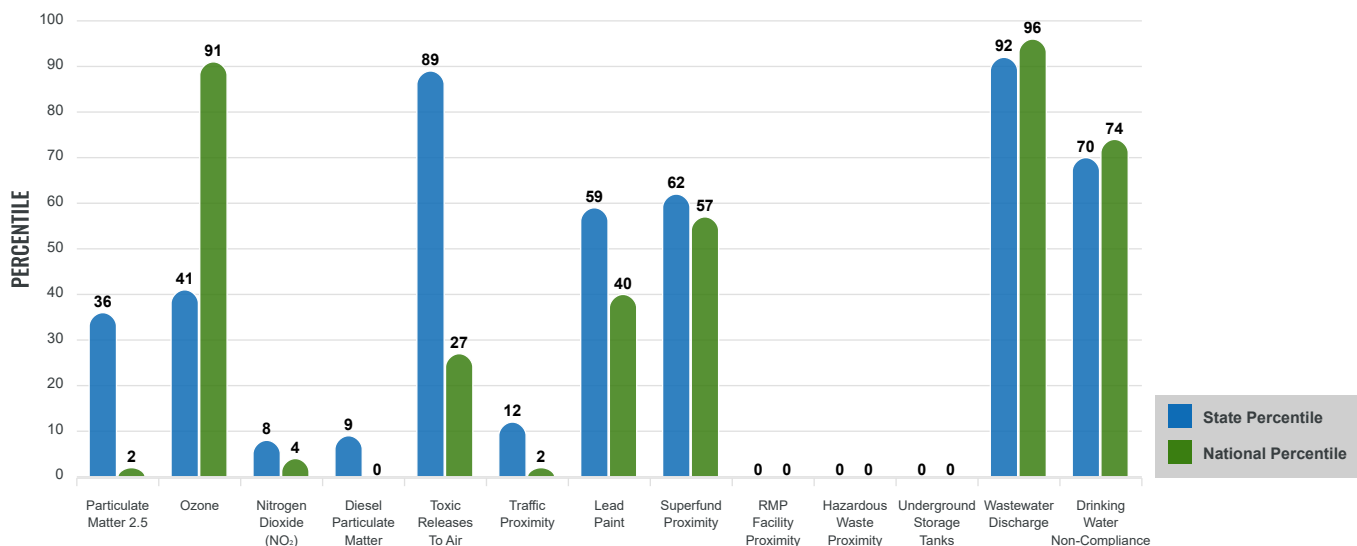
### EJ INDEXES FOR THE SELECTED LOCATION



## SUPPLEMENTAL INDEXES

The supplemental indexes offer a different perspective on community-level vulnerability. They combine data on percent low income, percent persons with disabilities, percent less than high school education, percent limited English speaking, and percent low life expectancy with a single environmental indicator.

### SUPPLEMENTAL INDEXES FOR THE SELECTED LOCATION



Report for 5 miles Ring Centered at 36.789891,-109.039025

Report produced September 25, 2024 using EJScreen Version 2.3

# EJScreen Environmental and Socioeconomic Indicators Data

SELECTED VARIABLES	VALUE	STATE AVERAGE	PERCENTILE IN STATE	USA AVERAGE	PERCENTILE IN USA
<b>ENVIRONMENTAL BURDEN INDICATORS</b>					
Particulate Matter 2.5 (µg/m <sup>3</sup> )	5.04	6.11	17	8.45	1
Ozone (ppb)	62.8	65.3	17	61.8	61
Nitrogen Dioxide (NO <sub>2</sub> ) (ppbv)	2.1	8.1	4	7.8	2
Diesel Particulate Matter (µg/m <sup>3</sup> )	0.0151	0.187	6	0.191	0
Toxic Releases to Air (toxicity-weighted concentration)	39	29	77	4,600	15
Traffic Proximity (daily traffic count/distance to road)	370	730,000	8	1,700,000	1
Lead Paint (% Pre-1960 Housing)	0.028	0.19	30	0.3	21
Superfund Proximity (site count/km distance)	0.051	0.34	61	0.39	56
RMP Facility Proximity (facility count/km distance)	0	0.2	0	0.57	0
Hazardous Waste Proximity (facility count/km distance)	0	1.2	0	3.5	0
Underground Storage Tanks (count/km <sup>2</sup> )	0	2.8	0	3.6	0
Wastewater Discharge (toxicity-weighted concentration/m distance)	13000	990000	86	700000	89
Drinking Water Non-Compliance (points)	0.3	5.6	72	2.2	75
<b>SOCIOECONOMIC INDICATORS</b>					
Demographic Index USA	3.03	N/A	N/A	1.34	95
Supplemental Demographic Index USA	2.74	N/A	N/A	1.64	93
Demographic Index State	3.38	2.16	91	N/A	N/A
Supplemental Demographic Index State	2.54	1.62	89	N/A	N/A
People of Color	100%	62%	96	40%	96
Low Income	62%	39%	81	30%	90
Unemployment Rate	15%	6%	88	6%	91
Limited English Speaking Households	20%	6%	91	5%	93
Less Than High School Education	15%	14%	64	11%	72
Under Age 5	5%	5%	55	5%	48
Over Age 64	16%	20%	43	18%	49

\*Diesel particulate matter index is from the EPA's Air Toxics Data Update, which is the Agency's ongoing, comprehensive evaluation of air toxics in the United States. This effort aims to prioritize air toxics, emission sources, and locations of interest for further study. It is important to remember that the air toxics data presented here provide broad estimates of health risks over geographic areas of the country, not definitive risks to specific individuals or locations. More information on the Air Toxics Data Update can be found at: <https://www.epa.gov/haps/air-toxics-data-update>.

**Sites reporting to EPA within defined area:**

Superfund .....	0
Hazardous Waste, Treatment, Storage, and Disposal Facilities .....	0
Water Dischargers .....	3
Air Pollution .....	0
Brownfields .....	0
Toxic Release Inventory .....	0

**Other community features within defined area:**

Schools .....	1
Hospitals .....	0
Places of Worship .....	0

**Other environmental data:**

Air Non-attainment .....	No
Impaired Waters .....	No

Selected location contains American Indian Reservation Lands* .....	Yes
Selected location contains a "Justice40 (CEJST)" disadvantaged community .....	Yes
Selected location contains an EPA IRA disadvantaged community .....	Yes

Report for 5 miles Ring Centered at 36.789891,-109.039025  
 Report produced September 25, 2024 using EJScreen Version 2.3

## EJScreen Environmental and Socioeconomic Indicators Data

### HEALTH INDICATORS

INDICATOR	VALUE	STATE AVERAGE	STATE PERCENTILE	US AVERAGE	US PERCENTILE
Low Life Expectancy	23%	19%	83	20%	81
Heart Disease	8.6	5.9	94	5.8	93
Asthma	14.8	11.2	95	10.3	99
Cancer	5.8	6.1	47	6.4	36
Persons with Disabilities	22.9%	17.1%	82	13.7%	92

### CLIMATE INDICATORS

INDICATOR	VALUE	STATE AVERAGE	STATE PERCENTILE	US AVERAGE	US PERCENTILE
Flood Risk	N/A	9%	N/A	12%	N/A
Wildfire Risk	N/A	58%	N/A	14%	N/A

### CRITICAL SERVICE GAPS

INDICATOR	VALUE	STATE AVERAGE	STATE PERCENTILE	US AVERAGE	US PERCENTILE
Broadband Internet	59%	20%	95	13%	99
Lack of Health Insurance	22%	10%	94	9%	94
Housing Burden	No	N/A	N/A	N/A	N/A
Transportation Access Burden	Yes	N/A	N/A	N/A	N/A
Food Desert	Yes	N/A	N/A	N/A	N/A

Report for 5 miles Ring Centered at 36.789891,-109.039025

Report produced September 25, 2024 using EJScreen Version 2.3

Location: User-specified point center at 36.789891, -109.039025  
 Ring (buffer): 5-miles radius  
 Description: Jimmy King No. 2 NM0206

Summary of ACS Estimates		2018 - 2022
Population		408
Population Density (per sq. mile)		5
People of Color Population		406
% People of Color Population		100%
Households		114
Housing Units		164
Housing Units Built Before 1950		1
Per Capita Income		15,804
Land Area (sq. miles) (Source: SF1)		88.20
% Land Area		100%
Water Area (sq. miles) (Source: SF1)		0.08
% Water Area		0%

	2018 - 2022 ACS Estimates	Percent	MOE (±)
<b>Population by Race</b>			
Total	408	100%	269
Population Reporting One Race	390	96%	341
White	2	0%	14
Black	0	0%	14
American Indian	384	94%	268
Asian	0	0%	14
Pacific Islander	1	0%	17
Some Other Race	3	1%	14
Population Reporting Two or More Races	18	4%	83
Total Hispanic Population	6	2%	20
Total Non-Hispanic Population	401		
White Alone	2	0%	14
Black Alone	0	0%	14
American Indian Alone	382	94%	268
Non-Hispanic Asian Alone	0	0%	14
Pacific Islander Alone	1	0%	17
Other Race Alone	0	0%	14
Two or More Races Alone	16	4%	78
<b>Population by Sex</b>			
Male	228	56%	171
Female	180	44%	128
<b>Population by Age</b>			
Age 0-4	18	5%	52
Age 0-17	72	18%	84
Age 18+	336	82%	142
Age 65+	64	16%	69

**Data Note:** Detail may not sum to totals due to rounding. Hispanic population can be of any race.

N/A means not available. **Source:** U.S. Census Bureau, American Community Survey (ACS) 2018 - 2022

Location: User-specified point center at 36.789891, -109.039025  
 Ring (buffer): 5-miles radius  
 Description: Jimmy King No. 2 NM0206

	2018 - 2022 ACS Estimates	Percent	MOE (±)
<b>Population 25+ by Educational Attainment</b>			
Total	301	100%	165
Less than 9th Grade	18	6%	43
9th - 12th Grade, No Diploma	27	9%	39
High School Graduate	97	32%	76
Some College, No Degree	106	35%	77
Associate Degree	34	11%	65
Bachelor's Degree or more	19	6%	40
<b>Population Age 5+ Years by Ability to Speak English</b>			
Total	389	100%	249
Speak only English	128	33%	109
Non-English at Home <sup>1+2+3+4</sup>	261	67%	173
<sup>1</sup> Speak English "very well"	163	42%	160
<sup>2</sup> Speak English "well"	81	21%	91
<sup>3</sup> Speak English "not well"	14	4%	78
<sup>4</sup> Speak English "not at all"	3	1%	48
<sup>3+4</sup> Speak English "less than well"	17	4%	88
<sup>2+3+4</sup> Speak English "less than very well"	98	25%	111
<b>Limited English Speaking Households*</b>			
Total	23	100%	70
Speak Spanish	0	0%	14
Speak Other Indo-European Languages	0	0%	14
Speak Asian-Pacific Island Languages	0	0%	14
Speak Other Languages	23	100%	66
<b>Households by Household Income</b>			
Household Income Base	114	100%	66
< \$15,000	24	21%	42
\$15,000 - \$25,000	19	17%	63
\$25,000 - \$50,000	33	29%	35
\$50,000 - \$75,000	16	14%	29
\$75,000 +	23	20%	30
<b>Occupied Housing Units by Tenure</b>			
Total	114	100%	66
Owner Occupied	96	85%	57
Renter Occupied	17	15%	63
<b>Employed Population Age 16+ Years</b>			
Total	345	100%	224
In Labor Force	143	41%	109
Civilian Unemployed in Labor Force	22	15%	62
Not In Labor Force	202	59%	165

**Data Note:** Detail may not sum to totals due to rounding. Hispanic population can be of anyrace.

N/A means not available. **Source:** U.S. Census Bureau, American Community Survey (ACS)

\*Households in which no one 14 and over speaks English "very well" or speaks English only.

Location: User-specified point center at 36.789891, -109.039025

Ring (buffer): 5-miles radius

Description: Jimmy King No. 2 NM0206

	2018 - 2022 ACS Estimates	Percent	MOE (±)
<b>Population by Language Spoken at Home*</b>			
Total (persons age 5 and above)	N/A	N/A	N/A
English	N/A	N/A	N/A
Spanish	N/A	N/A	N/A
French, Haitian, or Cajun	N/A	N/A	N/A
German or other West Germanic	N/A	N/A	N/A
Russian, Polish, or Other Slavic	N/A	N/A	N/A
Other Indo-European	N/A	N/A	N/A
Korean	N/A	N/A	N/A
Chinese (including Mandarin, Cantonese)	N/A	N/A	N/A
Vietnamese	N/A	N/A	N/A
Tagalog (including Filipino)	N/A	N/A	N/A
Other Asian and Pacific Island	N/A	N/A	N/A
Arabic	N/A	N/A	N/A
Other and Unspecified	N/A	N/A	N/A
Total Non-English	N/A	N/A	N/A

**Data Note:** Detail may not sum to totals due to rounding. Hispanic population can be of any race.  
 N/A means not available. **Source:** U.S. Census Bureau, American Community Survey (ACS) 2018 - 2022.  
 \*Population by Language Spoken at Home is available at the census tract summary level and up.