

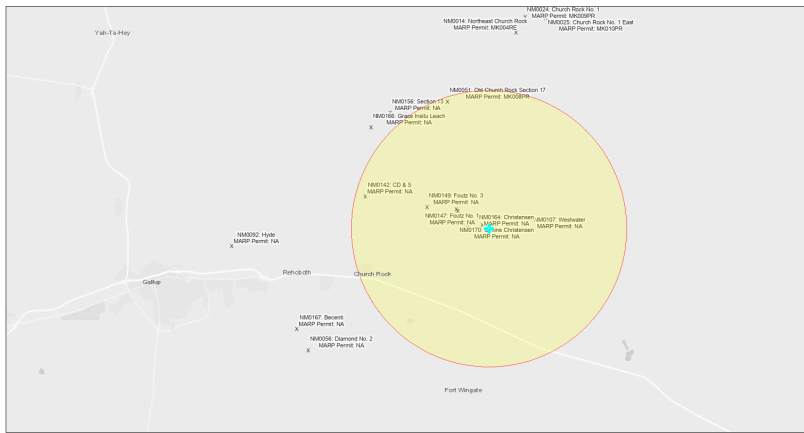


EJScreen Community Report

This report provides environmental and socioeconomic information for user-defined areas, and combines that data into environmental justice and supplemental indexes.

Christensen NM0164

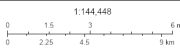
5 miles Ring Centered at 35.555589,-108.525982
 Population: 3,308
 Area in square miles: 78.53



September 24, 2024

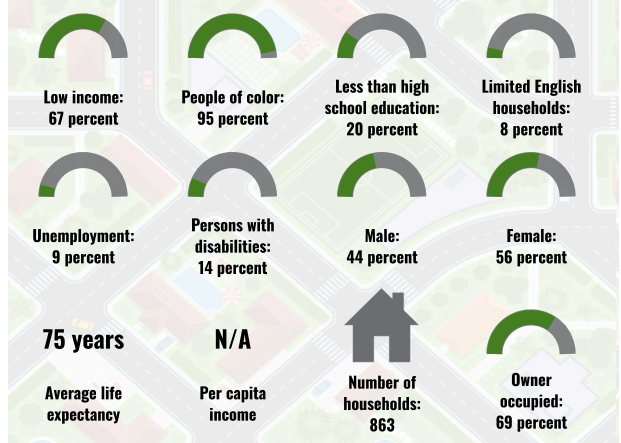
Christensen NM0164

* Abandoned Uranium Mines

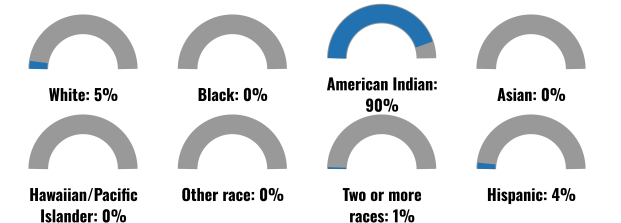


Bureau of Land Management, EPA, HHS, Census, USGS, BIA, IHS, New Mexico Energy, Storage and Natural Resources Department, EIS, HHS, IHS

COMMUNITY INFORMATION



BREAKDOWN BY RACE



BREAKDOWN BY AGE



LIMITED ENGLISH SPEAKING BREAKDOWN



Notes: Numbers may not sum to totals due to rounding. Hispanic population can be of any race. Source: U.S. Census Bureau American Community Survey (ACS) 2018-2022. Life expectancy data comes from the Centers for Disease Control.

LANGUAGES SPOKEN AT HOME

LANGUAGE	PERCENT
English	45%
Other and Unspecified	55%
Total Non-English	55%

Report for 5 miles Ring Centered at 35.555589,-108.525982

Report produced September 24, 2024 using EJScreen Version 2.3

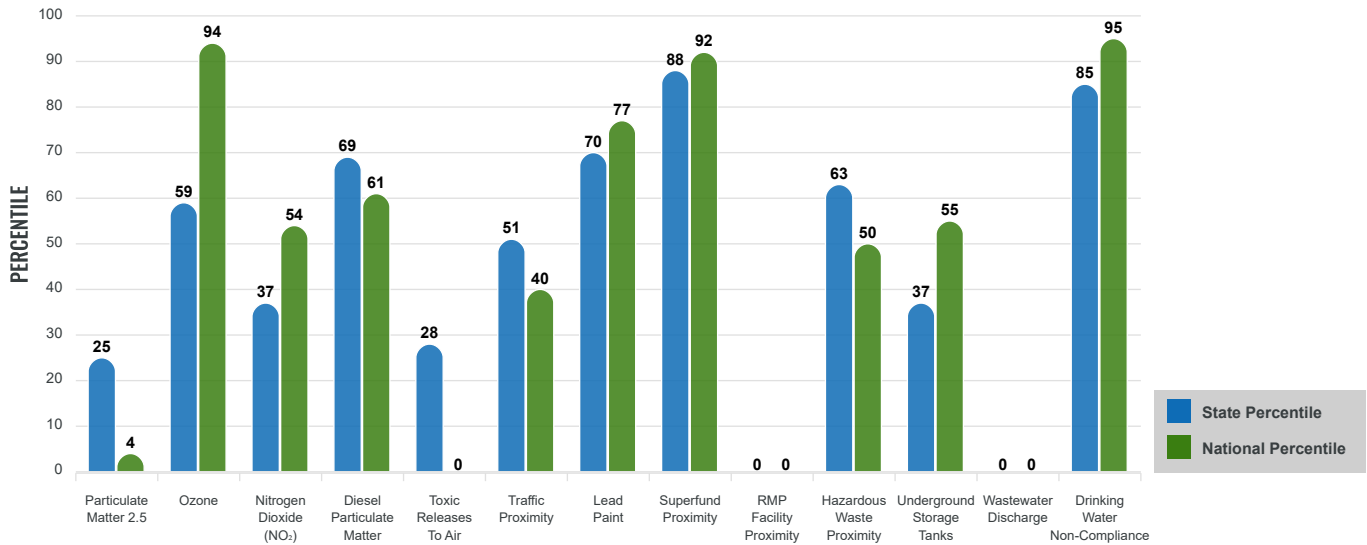
Environmental Justice & Supplemental Indexes

The environmental justice and supplemental indexes are a combination of environmental and socioeconomic information. There are thirteen EJ indexes and supplemental indexes in EJScreen reflecting the 13 environmental indicators. The indexes for a selected area are compared to those for all other locations in the state or nation. For more information and calculation details on the EJ and supplemental indexes, please visit the [EJScreen website](#).

EJ INDEXES

The EJ indexes help users screen for potential EJ concerns. To do this, the EJ index combines data on low income and people of color populations with a single environmental indicator.

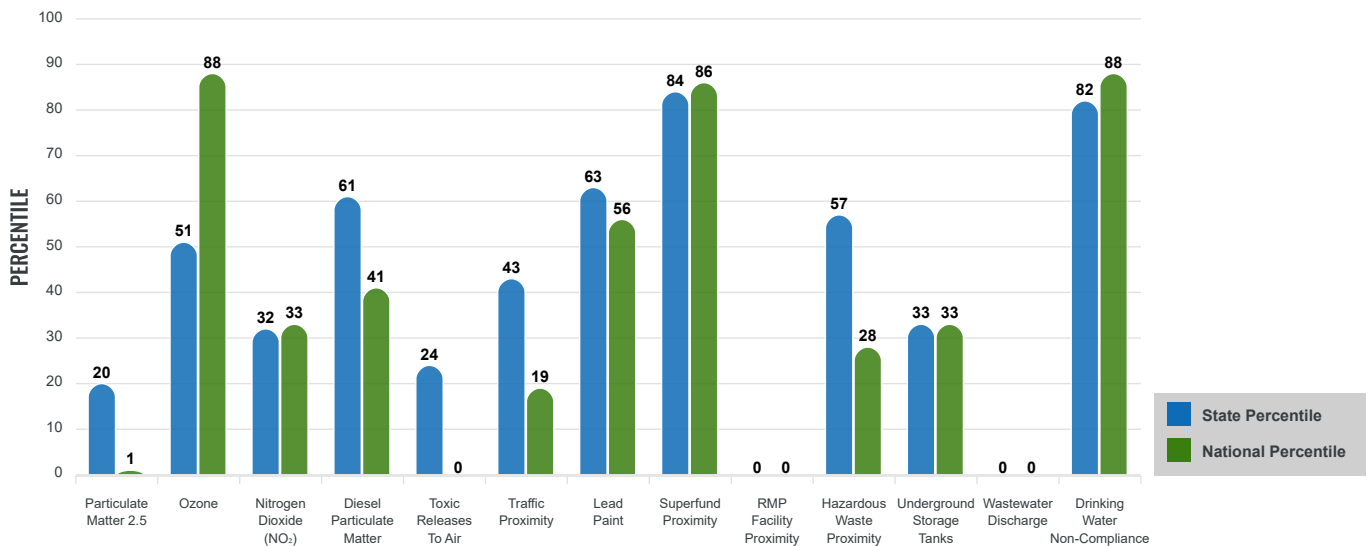
EJ INDEXES FOR THE SELECTED LOCATION



SUPPLEMENTAL INDEXES

The supplemental indexes offer a different perspective on community-level vulnerability. They combine data on percent low income, percent persons with disabilities, percent less than high school education, percent limited English speaking, and percent low life expectancy with a single environmental indicator.

SUPPLEMENTAL INDEXES FOR THE SELECTED LOCATION



Report for 5 miles Ring Centered at 35.555589,-108.525982

Report produced September 24, 2024 using EJScreen Version 2.3

EJScreen Environmental and Socioeconomic Indicators Data

SELECTED VARIABLES	VALUE	STATE AVERAGE	PERCENTILE IN STATE	USA AVERAGE	PERCENTILE IN USA
ENVIRONMENTAL BURDEN INDICATORS					
Particulate Matter 2.5 (µg/m ³)	4.87	6.11	12	8.45	1
Ozone (ppb)	63.8	65.3	32	61.8	66
Nitrogen Dioxide (NO ₂) (ppbv)	4.3	8.1	20	7.8	17
Diesel Particulate Matter (µg/m ³)	0.086	0.187	40	0.191	22
Toxic Releases to Air (toxicity-weighted concentration)	0	29	14	4,600	0
Traffic Proximity (daily traffic count/distance to road)	50,000	730,000	28	1,700,000	12
Lead Paint (% Pre-1960 Housing)	0.14	0.19	57	0.3	40
Superfund Proximity (site count/km distance)	0.12	0.34	68	0.39	62
RMP Facility Proximity (facility count/km distance)	0	0.2	0	0.57	0
Hazardous Waste Proximity (facility count/km distance)	0.097	1.2	38	3.5	17
Underground Storage Tanks (count/km ²)	0.13	2.8	38	3.6	34
Wastewater Discharge (toxicity-weighted concentration/m distance)	0	990000	0	700000	0
Drinking Water Non-Compliance (points)	0.44	5.6	73	2.2	75
SOCIOECONOMIC INDICATORS					
Demographic Index USA	3.07	N/A	N/A	1.34	95
Supplemental Demographic Index USA	2.36	N/A	N/A	1.64	85
Demographic Index State	3.45	2.16	92	N/A	N/A
Supplemental Demographic Index State	2.11	1.62	77	N/A	N/A
People of Color	95%	62%	90	40%	92
Low Income	67%	39%	86	30%	92
Unemployment Rate	10%	6%	75	6%	81
Limited English Speaking Households	7%	6%	73	5%	81
Less Than High School Education	20%	14%	74	11%	81
Under Age 5	6%	5%	68	5%	63
Over Age 64	10%	20%	20	18%	24

*Diesel particulate matter index is from the EPA's Air Toxics Data Update, which is the Agency's ongoing, comprehensive evaluation of air toxics in the United States. This effort aims to prioritize air toxics, emission sources, and locations of interest for further study. It is important to remember that the air toxics data presented here provide broad estimates of health risks over geographic areas of the country, not definitive risks to specific individuals or locations. More information on the Air Toxics Data Update can be found at: <https://www.epa.gov/haps/air-toxics-data-update>.

Sites reporting to EPA within defined area:

Superfund	0
Hazardous Waste, Treatment, Storage, and Disposal Facilities	0
Water Dischargers	44
Air Pollution	1
Brownfields	0
Toxic Release Inventory	0

Other community features within defined area:

Schools	1
Hospitals	0
Places of Worship	1

Other environmental data:

Air Non-attainment	No
Impaired Waters	Yes

Selected location contains American Indian Reservation Lands*	Yes
Selected location contains a "Justice40 (CEJST)" disadvantaged community	Yes
Selected location contains an EPA IRA disadvantaged community	Yes

*Report for 5 miles Ring Centered at 35.555589,-108.525982
Report produced September 24, 2024 using EJScreen Version 2.3*

EJScreen Environmental and Socioeconomic Indicators Data

HEALTH INDICATORS

INDICATOR	VALUE	STATE AVERAGE	STATE PERCENTILE	US AVERAGE	US PERCENTILE
Low Life Expectancy	23%	19%	83	20%	81
Heart Disease	9.4	5.9	97	5.8	96
Asthma	16.3	11.2	99	10.3	99
Cancer	5.2	6.1	27	6.4	25
Persons with Disabilities	13.5%	17.1%	33	13.7%	54

CLIMATE INDICATORS

INDICATOR	VALUE	STATE AVERAGE	STATE PERCENTILE	US AVERAGE	US PERCENTILE
Flood Risk	10%	9%	67	12%	65
Wildfire Risk	3%	58%	30	14%	80

CRITICAL SERVICE GAPS

INDICATOR	VALUE	STATE AVERAGE	STATE PERCENTILE	US AVERAGE	US PERCENTILE
Broadband Internet	53%	20%	93	13%	98
Lack of Health Insurance	18%	10%	89	9%	90
Housing Burden	No	N/A	N/A	N/A	N/A
Transportation Access Burden	Yes	N/A	N/A	N/A	N/A
Food Desert	Yes	N/A	N/A	N/A	N/A

Report for 5 miles Ring Centered at 35.555589,-108.525982

Report produced September 24, 2024 using EJScreen Version 2.3

Location: User-specified point center at 35.555589, -108.525982
 Ring (buffer): 5-miles radius
 Description: Christensen NM0164

Summary of ACS Estimates		2018 - 2022
Population		3,308
Population Density (per sq. mile)		41
People of Color Population		3,151
% People of Color Population		95%
Households		863
Housing Units		1,077
Housing Units Built Before 1950		20
Per Capita Income		N/A
Land Area (sq. miles) (Source: SF1)		80.28
% Land Area		100%
Water Area (sq. miles) (Source: SF1)		0.01
% Water Area		0%

	2018 - 2022 ACS Estimates	Percent	MOE (±)
Population by Race			
Total	3,308	100%	284
Population Reporting One Race	3,267	99%	559
White	157	5%	123
Black	6	0%	13
American Indian	3,104	94%	277
Asian	0	0%	13
Pacific Islander	0	0%	13
Some Other Race	0	0%	120
Population Reporting Two or More Races	41	1%	121
Total Hispanic Population	139	4%	163
Total Non-Hispanic Population	3,170		
White Alone	157	5%	123
Black Alone	6	0%	13
American Indian Alone	2,967	90%	261
Non-Hispanic Asian Alone	0	0%	13
Pacific Islander Alone	0	0%	13
Other Race Alone	0	0%	28
Two or More Races Alone	40	1%	27
Population by Sex			
Male	1,456	44%	168
Female	1,853	56%	201
Population by Age			
Age 0-4	204	6%	87
Age 0-17	882	27%	110
Age 18+	2,426	73%	181
Age 65+	322	10%	107

Data Note: Detail may not sum to totals due to rounding. Hispanic population can be of any race.

N/A means not available. **Source:** U.S. Census Bureau, American Community Survey (ACS) 2018 - 2022

Location: User-specified point center at 35.555589, -108.525982
 Ring (buffer): 5-miles radius
 Description: Christensen NM0164

	2018 - 2022 ACS Estimates	Percent	MOE (±)
Population 25+ by Educational Attainment			
Total	2,038	100%	186
Less than 9th Grade	152	7%	40
9th - 12th Grade, No Diploma	253	12%	73
High School Graduate	717	35%	102
Some College, No Degree	470	23%	74
Associate Degree	164	8%	45
Bachelor's Degree or more	282	14%	109
Population Age 5+ Years by Ability to Speak English			
Total	3,104	100%	268
Speak only English	1,457	47%	172
Non-English at Home ¹⁺²⁺³⁺⁴	1,647	53%	215
¹ Speak English "very well"	1,386	45%	215
² Speak English "well"	181	6%	72
³ Speak English "not well"	59	2%	46
⁴ Speak English "not at all"	22	1%	45
³⁺⁴ Speak English "less than well"	81	3%	64
²⁺³⁺⁴ Speak English "less than very well"	262	8%	96
Limited English Speaking Households*			
Total	65	100%	29
Speak Spanish	0	0%	13
Speak Other Indo-European Languages	0	0%	13
Speak Asian-Pacific Island Languages	0	0%	13
Speak Other Languages	65	100%	19
Households by Household Income			
Household Income Base	863	100%	92
< \$15,000	245	28%	70
\$15,000 - \$25,000	78	9%	23
\$25,000 - \$50,000	154	18%	56
\$50,000 - \$75,000	91	11%	57
\$75,000 +	294	34%	106
Occupied Housing Units by Tenure			
Total	863	100%	92
Owner Occupied	595	69%	70
Renter Occupied	268	31%	94
Employed Population Age 16+ Years			
Total	2,515	100%	229
In Labor Force	1,243	49%	171
Civilian Unemployed in Labor Force	108	9%	44
Not In Labor Force	1,272	51%	133

Data Note: Detail may not sum to totals due to rounding. Hispanic population can be of anyrace.

N/A means not available. **Source:** U.S. Census Bureau, American Community Survey (ACS)

*Households in which no one 14 and over speaks English "very well" or speaks English only.

Location: User-specified point center at 35.555589, -108.525982

Ring (buffer): 5-miles radius

Description: Christensen NM0164

	2018 - 2022 ACS Estimates	Percent	MOE (±)
Population by Language Spoken at Home*			
Total (persons age 5 and above)	1,246	100%	300
English	564	45%	257
Spanish	0	0%	13
French, Haitian, or Cajun	0	0%	13
German or other West Germanic	0	0%	13
Russian, Polish, or Other Slavic	0	0%	13
Other Indo-European	0	0%	13
Korean	0	0%	13
Chinese (including Mandarin, Cantonese)	0	0%	13
Vietnamese	0	0%	13
Tagalog (including Filipino)	0	0%	13
Other Asian and Pacific Island	0	0%	13
Arabic	0	0%	13
Other and Unspecified	682	55%	195
Total Non-English	682	55%	395

Data Note: Detail may not sum to totals due to rounding. Hispanic population can be of any race.
N/A means not available. **Source:** U.S. Census Bureau, American Community Survey (ACS) 2018 - 2022.
*Population by Language Spoken at Home is available at the census tract summary level and up.