

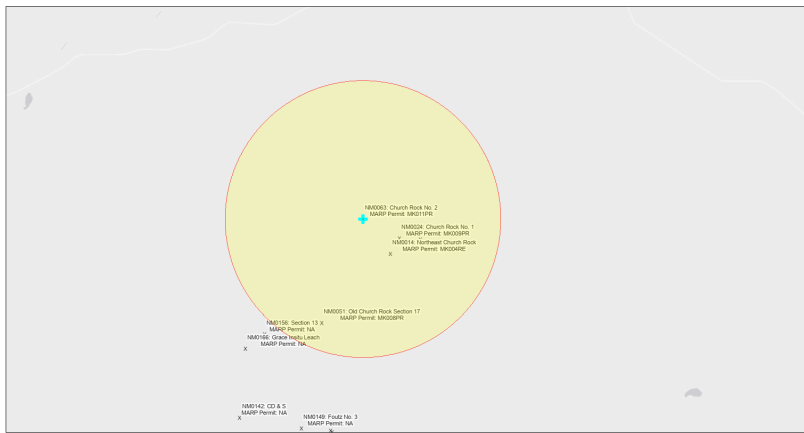


# EJScreen Community Report

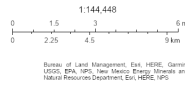
This report provides environmental and socioeconomic information for user-defined areas, and combines that data into environmental justice and supplemental indexes.

## Church Rock No. 2 NM0063

5 miles Ring Centered at 35.676638,-108.526222  
Population: 506  
Area in square miles: 78.53

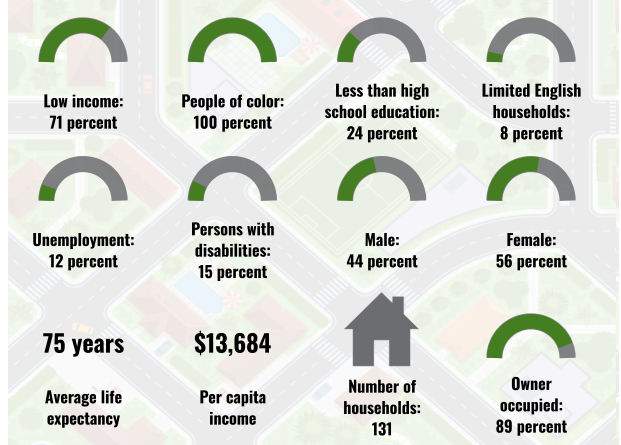


September 18, 2024  
Church Rock No. 2 (NM0063)  
\* Abandoned Uranium Mines

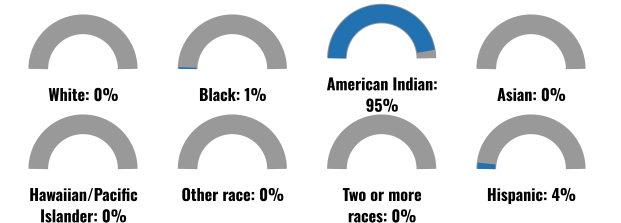


Bureau of Land Management, EPA, HHS, Census, USGS, EPA, USF, New Mexico Energy, Storage and Natural Resources Department, EPA, HHS, USF

### COMMUNITY INFORMATION



### BREAKDOWN BY RACE



### BREAKDOWN BY AGE



### LIMITED ENGLISH SPEAKING BREAKDOWN



### LANGUAGES SPOKEN AT HOME

LANGUAGE	PERCENT
No language data available.	

Notes: Numbers may not sum to totals due to rounding. Hispanic population can be of any race. Source: U.S. Census Bureau, American Community Survey (ACS) 2018-2022. Life expectancy data comes from the Centers for Disease Control.

Report for 5 miles Ring Centered at 35.676638,-108.526222  
Report produced September 18, 2024 using EJScreen Version 2.3

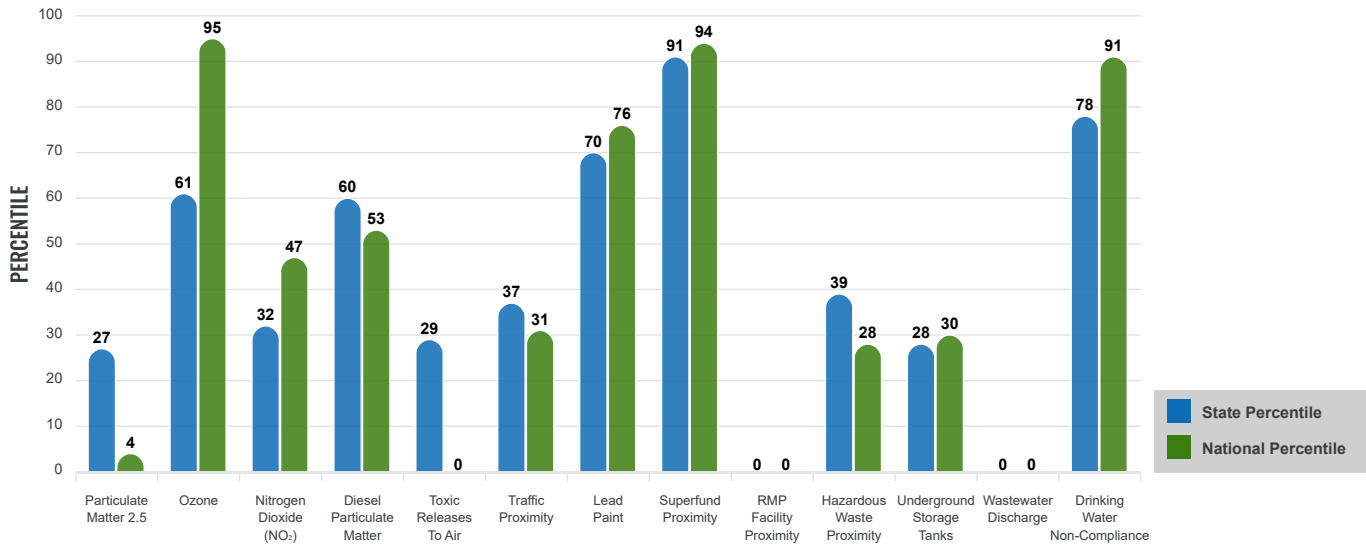
# Environmental Justice & Supplemental Indexes

The environmental justice and supplemental indexes are a combination of environmental and socioeconomic information. There are thirteen EJ indexes and supplemental indexes in EJScreen reflecting the 13 environmental indicators. The indexes for a selected area are compared to those for all other locations in the state or nation. For more information and calculation details on the EJ and supplemental indexes, please visit the [EJScreen website](#).

## EJ INDEXES

The EJ indexes help users screen for potential EJ concerns. To do this, the EJ index combines data on low income and people of color populations with a single environmental indicator.

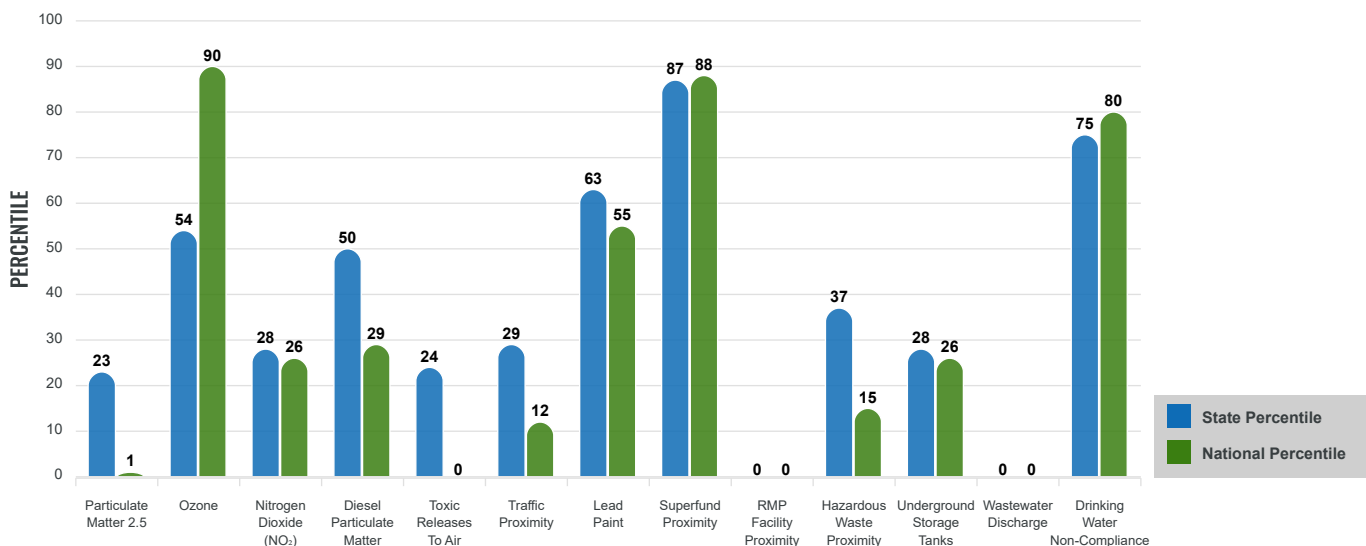
### EJ INDEXES FOR THE SELECTED LOCATION



## SUPPLEMENTAL INDEXES

The supplemental indexes offer a different perspective on community-level vulnerability. They combine data on percent low income, percent persons with disabilities, percent less than high school education, percent limited English speaking, and percent low life expectancy with a single environmental indicator.

### SUPPLEMENTAL INDEXES FOR THE SELECTED LOCATION



Report for 5 miles Ring Centered at 35.676638,-108.526222

Report produced September 18, 2024 using EJScreen Version 2.3

# EJScreen Environmental and Socioeconomic Indicators Data

SELECTED VARIABLES	VALUE	STATE AVERAGE	PERCENTILE IN STATE	USA AVERAGE	PERCENTILE IN USA
<b>ENVIRONMENTAL BURDEN INDICATORS</b>					
Particulate Matter 2.5 (µg/m <sup>3</sup> )	4.9	6.11	13	8.45	1
Ozone (ppb)	63.8	65.3	32	61.8	66
Nitrogen Dioxide (NO <sub>2</sub> ) (ppbv)	3.8	8.1	15	7.8	12
Diesel Particulate Matter (µg/m <sup>3</sup> )	0.0677	0.187	34	0.191	15
Toxic Releases to Air (toxicity-weighted concentration)	0	29	13	4,600	0
Traffic Proximity (daily traffic count/distance to road)	30,000	730,000	23	1,700,000	9
Lead Paint (% Pre-1960 Housing)	0.086	0.19	47	0.3	33
Superfund Proximity (site count/km distance)	0.14	0.34	71	0.39	65
RMP Facility Proximity (facility count/km distance)	0	0.2	0	0.57	0
Hazardous Waste Proximity (facility count/km distance)	0.026	1.2	35	3.5	15
Underground Storage Tanks (count/km <sup>2</sup> )	0.001	2.8	28	3.6	27
Wastewater Discharge (toxicity-weighted concentration/m distance)	0	990000	0	700000	0
Drinking Water Non-Compliance (points)	0.38	5.6	72	2.2	75
<b>SOCIOECONOMIC INDICATORS</b>					
Demographic Index USA	3.24	N/A	N/A	1.34	97
Supplemental Demographic Index USA	2.52	N/A	N/A	1.64	89
Demographic Index State	3.63	2.16	96	N/A	N/A
Supplemental Demographic Index State	2.26	1.62	83	N/A	N/A
People of Color	100%	62%	96	40%	96
Low Income	71%	39%	89	30%	94
Unemployment Rate	12%	6%	82	6%	86
Limited English Speaking Households	8%	6%	75	5%	82
Less Than High School Education	24%	14%	80	11%	87
Under Age 5	6%	5%	64	5%	59
Over Age 64	10%	20%	22	18%	26

\*Diesel particulate matter index is from the EPA's Air Toxics Data Update, which is the Agency's ongoing, comprehensive evaluation of air toxics in the United States. This effort aims to prioritize air toxics, emission sources, and locations of interest for further study. It is important to remember that the air toxics data presented here provide broad estimates of health risks over geographic areas of the country, not definitive risks to specific individuals or locations. More information on the Air Toxics Data Update can be found at: <https://www.epa.gov/haps/air-toxics-data-update>.

**Sites reporting to EPA within defined area:**

Superfund .....	1
Hazardous Waste, Treatment, Storage, and Disposal Facilities .....	0
Water Dischargers .....	8
Air Pollution .....	0
Brownfields .....	0
Toxic Release Inventory .....	0

**Other community features within defined area:**

Schools .....	0
Hospitals .....	0
Places of Worship .....	0

**Other environmental data:**

Air Non-attainment .....	No
Impaired Waters .....	Yes

Selected location contains American Indian Reservation Lands* .....	Yes
Selected location contains a "Justice40 (CEJST)" disadvantaged community .....	Yes
Selected location contains an EPA IRA disadvantaged community .....	Yes

Report for 5 miles Ring Centered at 35.676638,-108.526222  
 Report produced September 18, 2024 using EJScreen Version 2.3

## EJScreen Environmental and Socioeconomic Indicators Data

### HEALTH INDICATORS

INDICATOR	VALUE	STATE AVERAGE	STATE PERCENTILE	US AVERAGE	US PERCENTILE
Low Life Expectancy	23%	19%	83	20%	81
Heart Disease	9.2	5.9	96	5.8	96
Asthma	16	11.2	99	10.3	99
Cancer	5.4	6.1	32	6.4	27
Persons with Disabilities	14.8%	17.1%	42	13.7%	63

### CLIMATE INDICATORS

INDICATOR	VALUE	STATE AVERAGE	STATE PERCENTILE	US AVERAGE	US PERCENTILE
Flood Risk	4%	9%	43	12%	36
Wildfire Risk	0%	58%	0	14%	0

### CRITICAL SERVICE GAPS

INDICATOR	VALUE	STATE AVERAGE	STATE PERCENTILE	US AVERAGE	US PERCENTILE
Broadband Internet	68%	20%	97	13%	99
Lack of Health Insurance	19%	10%	90	9%	91
Housing Burden	No	N/A	N/A	N/A	N/A
Transportation Access Burden	Yes	N/A	N/A	N/A	N/A
Food Desert	Yes	N/A	N/A	N/A	N/A

Report for 5 miles Ring Centered at 35.676638,-108.526222

Report produced September 18, 2024 using EJScreen Version 2.3

Location: User-specified point center at 35.676638, -108.526222  
 Ring (buffer): 5-miles radius  
 Description: Church Rock No. 2 NM0063

Summary of ACS Estimates		2018 - 2022
Population		506
Population Density (per sq. mile)		6
People of Color Population		504
% People of Color Population		100%
Households		131
Housing Units		169
Housing Units Built Before 1950		10
Per Capita Income		13,684
Land Area (sq. miles) (Source: SF1)		83.87
% Land Area		100%
Water Area (sq. miles) (Source: SF1)		0.01
% Water Area		0%

	2018 - 2022 ACS Estimates	Percent	MOE (±)
<b>Population by Race</b>			
Total	506	100%	275
Population Reporting One Race	503	99%	406
White	4	1%	47
Black	7	1%	43
American Indian	493	97%	277
Asian	0	0%	13
Pacific Islander	0	0%	13
Some Other Race	0	0%	13
Population Reporting Two or More Races	3	1%	27
Total Hispanic Population	19	4%	146
Total Non-Hispanic Population	487		
White Alone	2	0%	44
Black Alone	4	1%	38
American Indian Alone	479	95%	261
Non-Hispanic Asian Alone	0	0%	13
Pacific Islander Alone	0	0%	13
Other Race Alone	0	0%	13
Two or More Races Alone	2	0%	27
<b>Population by Sex</b>			
Male	222	44%	144
Female	284	56%	201
<b>Population by Age</b>			
Age 0-4	29	6%	52
Age 0-17	137	27%	110
Age 18+	369	73%	127
Age 65+	52	10%	60

**Data Note:** Detail may not sum to totals due to rounding. Hispanic population can be of any race.

N/A means not available. **Source:** U.S. Census Bureau, American Community Survey (ACS) 2018 - 2022

Location: User-specified point center at 35.676638, -108.526222

Ring (buffer): 5-miles radius

Description: Church Rock No. 2 NM0063

	2018 - 2022 ACS Estimates	Percent	MOE (±)
<b>Population 25+ by Educational Attainment</b>			
Total	312	100%	154
Less than 9th Grade	23	8%	60
9th - 12th Grade, No Diploma	51	16%	41
High School Graduate	119	38%	73
Some College, No Degree	77	25%	63
Associate Degree	24	8%	45
Bachelor's Degree or more	17	5%	52
<b>Population Age 5+ Years by Ability to Speak English</b>			
Total	477	100%	238
Speak only English	215	45%	172
Non-English at Home <sup>1+2+3+4</sup>	262	55%	134
<sup>1</sup> Speak English "very well"	218	46%	119
<sup>2</sup> Speak English "well"	33	7%	72
<sup>3</sup> Speak English "not well"	10	2%	46
<sup>4</sup> Speak English "not at all"	2	0%	45
<sup>3+4</sup> Speak English "less than well"	11	2%	64
<sup>2+3+4</sup> Speak English "less than very well"	44	9%	96
<b>Limited English Speaking Households*</b>			
Total	11	100%	28
Speak Spanish	0	0%	13
Speak Other Indo-European Languages	0	0%	13
Speak Asian-Pacific Island Languages	0	0%	13
Speak Other Languages	11	100%	17
<b>Households by Household Income</b>			
Household Income Base	131	100%	69
< \$15,000	40	31%	70
\$15,000 - \$25,000	19	15%	23
\$25,000 - \$50,000	25	19%	35
\$50,000 - \$75,000	14	11%	38
\$75,000 +	32	25%	39
<b>Occupied Housing Units by Tenure</b>			
Total	131	100%	69
Owner Occupied	116	89%	70
Renter Occupied	14	11%	44
<b>Employed Population Age 16+ Years</b>			
Total	382	100%	182
In Labor Force	175	46%	103
Civilian Unemployed in Labor Force	21	12%	45
Not In Labor Force	207	54%	133

**Data Note:** Detail may not sum to totals due to rounding. Hispanic population can be of anyrace.

N/A means not available. **Source:** U.S. Census Bureau, American Community Survey (ACS)

\*Households in which no one 14 and over speaks English "very well" or speaks English only.

Location: User-specified point center at 35.676638, -108.526222

Ring (buffer): 5-miles radius

Description: Church Rock No. 2 NM0063

	2018 - 2022 ACS Estimates	Percent	MOE (±)
<b>Population by Language Spoken at Home*</b>			
Total (persons age 5 and above)	N/A	N/A	N/A
English	N/A	N/A	N/A
Spanish	N/A	N/A	N/A
French, Haitian, or Cajun	N/A	N/A	N/A
German or other West Germanic	N/A	N/A	N/A
Russian, Polish, or Other Slavic	N/A	N/A	N/A
Other Indo-European	N/A	N/A	N/A
Korean	N/A	N/A	N/A
Chinese (including Mandarin, Cantonese)	N/A	N/A	N/A
Vietnamese	N/A	N/A	N/A
Tagalog (including Filipino)	N/A	N/A	N/A
Other Asian and Pacific Island	N/A	N/A	N/A
Arabic	N/A	N/A	N/A
Other and Unspecified	N/A	N/A	N/A
Total Non-English	N/A	N/A	N/A

**Data Note:** Detail may not sum to totals due to rounding. Hispanic population can be of any race.  
 N/A means not available. **Source:** U.S. Census Bureau, American Community Survey (ACS) 2018 - 2022.  
 \*Population by Language Spoken at Home is available at the census tract summary level and up.