



EJScreen Community Report

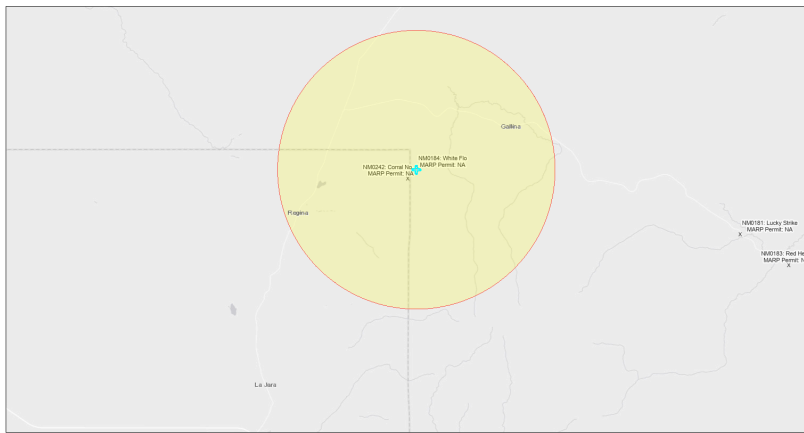
This report provides environmental and socioeconomic information for user-defined areas, and combines that data into environmental justice and supplemental indexes.

White Flo NM0184

5 miles Ring Centered at 36.205836,-106.880954

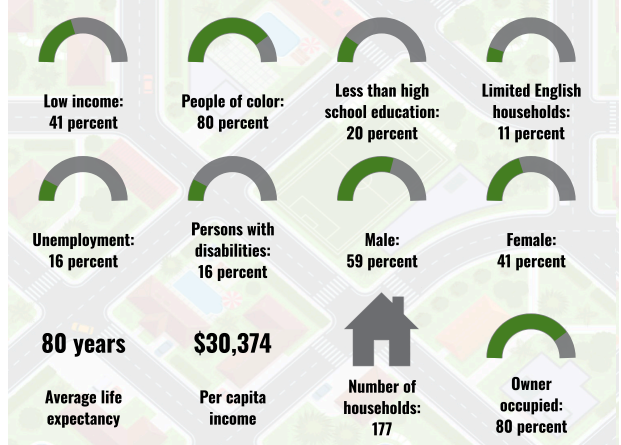
Population: 380

Area in square miles: 78.53

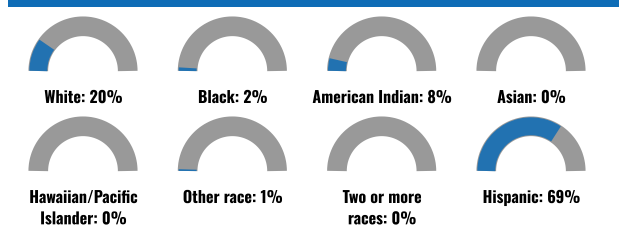


September 24, 2024
 White Flo NM0184
 * Abandoned Uranium Mines
 1:144,448
 0 1.5 3 4.5 6 mi
 0 2.25 4.5 9 km
 Bureau of Land Management, Esri, HERE, Garmin, IGGI, IBM, IPS, Inc, Next Issue, OpenStreetMap contributors, Swatch, and National Resources Department, Esri, HERE, IGS

COMMUNITY INFORMATION



BREAKDOWN BY RACE



BREAKDOWN BY AGE



LIMITED ENGLISH SPEAKING BREAKDOWN



LANGUAGES SPOKEN AT HOME

LANGUAGE	PERCENT
No language data available.	

Notes: Numbers may not sum to totals due to rounding. Hispanic population can be of any race. Source: U.S. Census Bureau, American Community Survey (ACS) 2018-2022. Life expectancy data comes from the Centers for Disease Control.

Report for 5 miles Ring Centered at 36.205836,-106.880954
 Report produced September 24, 2024 using EJScreen Version 2.3

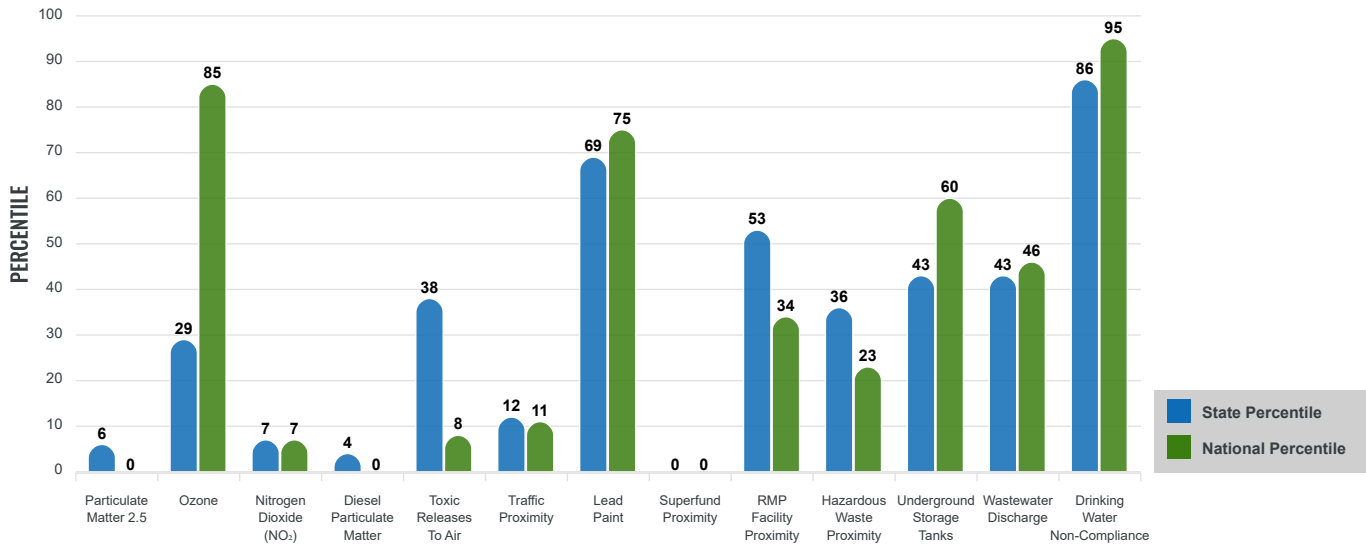
Environmental Justice & Supplemental Indexes

The environmental justice and supplemental indexes are a combination of environmental and socioeconomic information. There are thirteen EJ indexes and supplemental indexes in EJScreen reflecting the 13 environmental indicators. The indexes for a selected area are compared to those for all other locations in the state or nation. For more information and calculation details on the EJ and supplemental indexes, please visit the [EJScreen website](#).

EJ INDEXES

The EJ indexes help users screen for potential EJ concerns. To do this, the EJ index combines data on low income and people of color populations with a single environmental indicator.

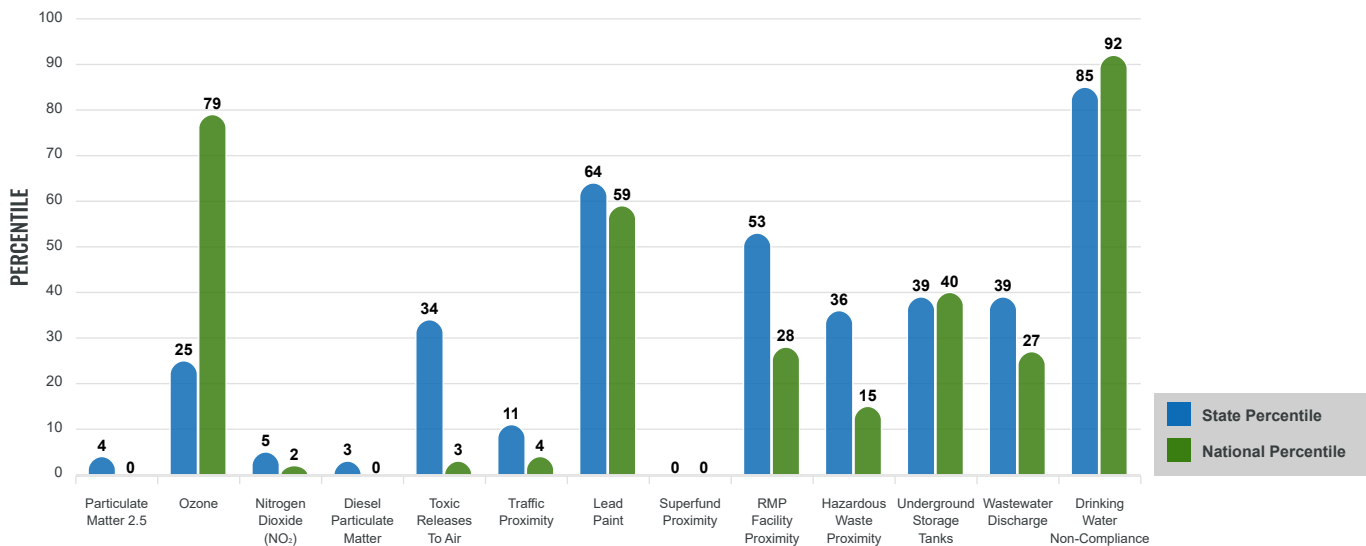
EJ INDEXES FOR THE SELECTED LOCATION



SUPPLEMENTAL INDEXES

The supplemental indexes offer a different perspective on community-level vulnerability. They combine data on percent low income, percent persons with disabilities, percent less than high school education, percent limited English speaking, and percent low life expectancy with a single environmental indicator.

SUPPLEMENTAL INDEXES FOR THE SELECTED LOCATION



Report for 5 miles Ring Centered at 36.205836,-106.880954

Report produced September 24, 2024 using EJScreen Version 2.3

EJScreen Environmental and Socioeconomic Indicators Data

SELECTED VARIABLES	VALUE	STATE AVERAGE	PERCENTILE IN STATE	USA AVERAGE	PERCENTILE IN USA
ENVIRONMENTAL BURDEN INDICATORS					
Particulate Matter 2.5 (µg/m ³)	4.48	6.11	2	8.45	0
Ozone (ppb)	63	65.3	19	61.8	63
Nitrogen Dioxide (NO ₂) (ppbv)	2.2	8.1	4	7.8	2
Diesel Particulate Matter (µg/m ³)	0.0105	0.187	2	0.191	0
Toxic Releases to Air (toxicity-weighted concentration)	1.2	29	43	4,600	4
Traffic Proximity (daily traffic count/distance to road)	12,000	730,000	16	1,700,000	5
Lead Paint (% Pre-1960 Housing)	0.19	0.19	63	0.3	47
Superfund Proximity (site count/km distance)	0	0.34	0	0.39	0
RMP Facility Proximity (facility count/km distance)	0.0095	0.2	53	0.57	28
Hazardous Waste Proximity (facility count/km distance)	0.041	1.2	36	3.5	15
Underground Storage Tanks (count/km ²)	0.0043	2.8	29	3.6	27
Wastewater Discharge (toxicity-weighted concentration/m distance)	6.7	990000	43	700000	33
Drinking Water Non-Compliance (points)	4.2	5.6	85	2.2	89
SOCIOECONOMIC INDICATORS					
Demographic Index USA	2.24	N/A	N/A	1.34	83
Supplemental Demographic Index USA	1.95	N/A	N/A	1.64	71
Demographic Index State	2.57	2.16	65	N/A	N/A
Supplemental Demographic Index State	1.69	1.62	57	N/A	N/A
People of Color	80%	62%	73	40%	83
Low Income	41%	39%	54	30%	72
Unemployment Rate	17%	6%	90	6%	93
Limited English Speaking Households	8%	6%	75	5%	82
Less Than High School Education	20%	14%	74	11%	82
Under Age 5	2%	5%	28	5%	21
Over Age 64	29%	20%	81	18%	86

*Diesel particulate matter index is from the EPA's Air Toxics Data Update, which is the Agency's ongoing, comprehensive evaluation of air toxics in the United States. This effort aims to prioritize air toxics, emission sources, and locations of interest for further study. It is important to remember that the air toxics data presented here provide broad estimates of health risks over geographic areas of the country, not definitive risks to specific individuals or locations. More information on the Air Toxics Data Update can be found at: <https://www.epa.gov/haps/air-toxics-data-update>.

Sites reporting to EPA within defined area:

Superfund	0
Hazardous Waste, Treatment, Storage, and Disposal Facilities	0
Water Dischargers	1
Air Pollution	1
Brownfields	0
Toxic Release Inventory	0

Other community features within defined area:

Schools	3
Hospitals	0
Places of Worship	0

Other environmental data:

Air Non-attainment	No
Impaired Waters	Yes

Selected location contains American Indian Reservation Lands*	No
Selected location contains a "Justice40 (CEJST)" disadvantaged community	Yes
Selected location contains an EPA IRA disadvantaged community	Yes

Report for 5 miles Ring Centered at 36.205836,-106.880954
 Report produced September 24, 2024 using EJScreen Version 2.3

EJScreen Environmental and Socioeconomic Indicators Data

HEALTH INDICATORS

INDICATOR	VALUE	STATE AVERAGE	STATE PERCENTILE	US AVERAGE	US PERCENTILE
Low Life Expectancy	18%	19%	33	20%	37
Heart Disease	7.4	5.9	85	5.8	82
Asthma	10.4	11.2	24	10.3	55
Cancer	6.5	6.1	62	6.4	49
Persons with Disabilities	15.8%	17.1%	48	13.7%	68

CLIMATE INDICATORS

INDICATOR	VALUE	STATE AVERAGE	STATE PERCENTILE	US AVERAGE	US PERCENTILE
Flood Risk	13%	9%	79	12%	76
Wildfire Risk	74%	58%	45	14%	88

CRITICAL SERVICE GAPS

INDICATOR	VALUE	STATE AVERAGE	STATE PERCENTILE	US AVERAGE	US PERCENTILE
Broadband Internet	51%	20%	92	13%	98
Lack of Health Insurance	10%	10%	59	9%	67
Housing Burden	No	N/A	N/A	N/A	N/A
Transportation Access Burden	Yes	N/A	N/A	N/A	N/A
Food Desert	No	N/A	N/A	N/A	N/A

Report for 5 miles Ring Centered at 36.205836,-106.880954

Report produced September 24, 2024 using EJScreen Version 2.3

Location: User-specified point center at 36.205836, -106.880954
 Ring (buffer): 5-miles radius
 Description: White Flo NM0184

Summary of ACS Estimates		2018 - 2022
Population		380
Population Density (per sq. mile)		5
People of Color Population		303
% People of Color Population		80%
Households		177
Housing Units		290
Housing Units Built Before 1950		35
Per Capita Income		30,374
Land Area (sq. miles) (Source: SF1)		72.51
% Land Area		100%
Water Area (sq. miles) (Source: SF1)		0.11
% Water Area		0%

	2018 - 2022 ACS Estimates	Percent	MOE (±)
Population by Race			
Total	380	100%	380
Population Reporting One Race	302	80%	775
White	124	33%	202
Black	7	2%	61
American Indian	33	9%	242
Asian	0	0%	13
Pacific Islander	0	0%	13
Some Other Race	138	36%	244
Population Reporting Two or More Races	77	20%	191
Total Hispanic Population	264	69%	367
Total Non-Hispanic Population	116		
White Alone	76	20%	160
Black Alone	7	2%	61
American Indian Alone	29	8%	225
Non-Hispanic Asian Alone	0	0%	13
Pacific Islander Alone	0	0%	13
Other Race Alone	2	1%	41
Two or More Races Alone	2	0%	28
Population by Sex			
Male	224	59%	242
Female	156	41%	187
Population by Age			
Age 0-4	7	2%	57
Age 0-17	39	10%	107
Age 18+	341	90%	233
Age 65+	109	29%	142

Data Note: Detail may not sum to totals due to rounding. Hispanic population can be of any race.

N/A means not available. **Source:** U.S. Census Bureau, American Community Survey (ACS) 2018 - 2022

Location: User-specified point center at 36.205836, -106.880954
 Ring (buffer): 5-miles radius
 Description: White Flo NM0184

	2018 - 2022 ACS Estimates	Percent	MOE (±)
Population 25+ by Educational Attainment			
Total	318	100%	352
Less than 9th Grade	19	6%	86
9th - 12th Grade, No Diploma	44	14%	86
High School Graduate	139	44%	160
Some College, No Degree	48	15%	81
Associate Degree	13	4%	48
Bachelor's Degree or more	54	17%	137
Population Age 5+ Years by Ability to Speak English			
Total	373	100%	380
Speak only English	141	38%	208
Non-English at Home ¹⁺²⁺³⁺⁴	232	62%	285
¹ Speak English "very well"	202	54%	282
² Speak English "well"	24	7%	129
³ Speak English "not well"	5	1%	65
⁴ Speak English "not at all"	1	0%	47
³⁺⁴ Speak English "less than well"	6	1%	79
²⁺³⁺⁴ Speak English "less than very well"	30	8%	151
Limited English Speaking Households*			
Total	20	100%	74
Speak Spanish	20	100%	71
Speak Other Indo-European Languages	0	0%	13
Speak Asian-Pacific Island Languages	0	0%	13
Speak Other Languages	0	0%	13
Households by Household Income			
Household Income Base	177	100%	149
< \$15,000	30	17%	83
\$15,000 - \$25,000	17	10%	47
\$25,000 - \$50,000	36	20%	96
\$50,000 - \$75,000	23	13%	75
\$75,000 +	71	40%	108
Occupied Housing Units by Tenure			
Total	177	100%	149
Owner Occupied	141	80%	155
Renter Occupied	36	20%	84
Employed Population Age 16+ Years			
Total	343	100%	369
In Labor Force	176	51%	237
Civilian Unemployed in Labor Force	28	16%	102
Not In Labor Force	167	49%	191

Data Note: Detail may not sum to totals due to rounding. Hispanic population can be of anyrace.

N/A means not available. **Source:** U.S. Census Bureau, American Community Survey (ACS)

*Households in which no one 14 and over speaks English "very well" or speaks English only.



Location: User-specified point center at 36.205836, -106.880954

Ring (buffer): 5-miles radius

Description: White Flo NM0184

	2018 - 2022 ACS Estimates	Percent	MOE (±)
Population by Language Spoken at Home*			
Total (persons age 5 and above)	N/A	N/A	N/A
English	N/A	N/A	N/A
Spanish	N/A	N/A	N/A
French, Haitian, or Cajun	N/A	N/A	N/A
German or other West Germanic	N/A	N/A	N/A
Russian, Polish, or Other Slavic	N/A	N/A	N/A
Other Indo-European	N/A	N/A	N/A
Korean	N/A	N/A	N/A
Chinese (including Mandarin, Cantonese)	N/A	N/A	N/A
Vietnamese	N/A	N/A	N/A
Tagalog (including Filipino)	N/A	N/A	N/A
Other Asian and Pacific Island	N/A	N/A	N/A
Arabic	N/A	N/A	N/A
Other and Unspecified	N/A	N/A	N/A
Total Non-English	N/A	N/A	N/A

Data Note: Detail may not sum to totals due to rounding. Hispanic population can be of any race.
 N/A means not available. **Source:** U.S. Census Bureau, American Community Survey (ACS) 2018 - 2022.
 *Population by Language Spoken at Home is available at the census tract summary level and up.