

Location: User-specified point center at 35.549589, -106.208115  
 Ring (buffer): 5-miles radius  
 Description: La Bajada NM0108

Summary of ACS Estimates		2018 - 2022
Population		626
Population Density (per sq. mile)		8
People of Color Population		514
% People of Color Population		82%
Households		219
Housing Units		222
Housing Units Built Before 1950		8
Per Capita Income		50,715
Land Area (sq. miles) (Source: SF1)		76.38
% Land Area		100%
Water Area (sq. miles) (Source: SF1)		0.09
% Water Area		0%

	2018 - 2022 ACS Estimates	Percent	MOE (±)
<b>Population by Race</b>			
Total	626	100%	541
Population Reporting One Race	446	71%	812
White	351	56%	296
Black	0	0%	13
American Indian	1	0%	209
Asian	19	3%	55
Pacific Islander	0	0%	13
Some Other Race	75	12%	226
Population Reporting Two or More Races	180	29%	420
Total Hispanic Population	498	80%	485
Total Non-Hispanic Population	128		
White Alone	112	18%	211
Black Alone	0	0%	13
American Indian Alone	1	0%	209
Non-Hispanic Asian Alone	15	2%	43
Pacific Islander Alone	0	0%	13
Other Race Alone	0	0%	13
Two or More Races Alone	0	0%	56
<b>Population by Sex</b>			
Male	291	47%	243
Female	335	53%	369
<b>Population by Age</b>			
Age 0-4	52	8%	87
Age 0-17	136	22%	182
Age 18+	490	78%	340
Age 65+	64	10%	134

**Data Note:** Detail may not sum to totals due to rounding. Hispanic population can be of any race.

N/A means not available. **Source:** U.S. Census Bureau, American Community Survey (ACS) 2018 - 2022

Location: User-specified point center at 35.549589, -106.208115

Ring (buffer): 5-miles radius

Description: La Bajada NM0108

	2018 - 2022 ACS Estimates	Percent	MOE (±)
<b>Population 25+ by Educational Attainment</b>			
Total	418	100%	343
Less than 9th Grade	43	10%	112
9th - 12th Grade, No Diploma	60	14%	166
High School Graduate	124	30%	142
Some College, No Degree	53	13%	119
Associate Degree	16	4%	46
Bachelor's Degree or more	123	29%	161
<b>Population Age 5+ Years by Ability to Speak English</b>			
Total	574	100%	482
Speak only English	205	36%	227
Non-English at Home <sup>1+2+3+4</sup>	369	64%	372
<sup>1</sup> Speak English "very well"	214	37%	271
<sup>2</sup> Speak English "well"	60	10%	189
<sup>3</sup> Speak English "not well"	58	10%	115
<sup>4</sup> Speak English "not at all"	37	6%	119
<sup>3+4</sup> Speak English "less than well"	94	16%	165
<sup>2+3+4</sup> Speak English "less than very well"	155	27%	251
<b>Limited English Speaking Households*</b>			
Total	32	100%	84
Speak Spanish	32	100%	81
Speak Other Indo-European Languages	0	0%	13
Speak Asian-Pacific Island Languages	0	0%	13
Speak Other Languages	0	0%	18
<b>Households by Household Income</b>			
Household Income Base	219	100%	190
< \$15,000	4	2%	52
\$15,000 - \$25,000	10	4%	48
\$25,000 - \$50,000	41	19%	76
\$50,000 - \$75,000	53	24%	105
\$75,000 +	111	51%	173
<b>Occupied Housing Units by Tenure</b>			
Total	219	100%	190
Owner Occupied	169	77%	173
Renter Occupied	50	23%	101
<b>Employed Population Age 16+ Years</b>			
Total	498	100%	379
In Labor Force	400	80%	368
Civilian Unemployed in Labor Force	34	9%	85
Not In Labor Force	99	20%	186

**Data Note:** Detail may not sum to totals due to rounding. Hispanic population can be of anyrace.

N/A means not available. **Source:** U.S. Census Bureau, American Community Survey (ACS)

\*Households in which no one 14 and over speaks English "very well" or speaks English only.

Location: User-specified point center at 35.549589, -106.208115

Ring (buffer): 5-miles radius

Description: La Bajada NM0108

	2018 - 2022 ACS Estimates	Percent	MOE (±)
<b>Population by Language Spoken at Home*</b>			
Total (persons age 5 and above)	1,938	100%	469
English	1,101	57%	251
Spanish	796	41%	410
French, Haitian, or Cajun	0	0%	13
German or other West Germanic	10	0%	18
Russian, Polish, or Other Slavic	0	0%	13
Other Indo-European	0	0%	13
Korean	14	1%	35
Chinese (including Mandarin, Cantonese)	0	0%	13
Vietnamese	0	0%	13
Tagalog (including Filipino)	9	0%	19
Other Asian and Pacific Island	5	0%	11
Arabic	0	0%	13
Other and Unspecified	4	0%	11
Total Non-English	838	43%	532

**Data Note:** Detail may not sum to totals due to rounding. Hispanic population can be of any race.  
N/A means not available. **Source:** U.S. Census Bureau, American Community Survey (ACS) 2018 - 2022.  
\*Population by Language Spoken at Home is available at the census tract summary level and up.



# EJScreen Community Report

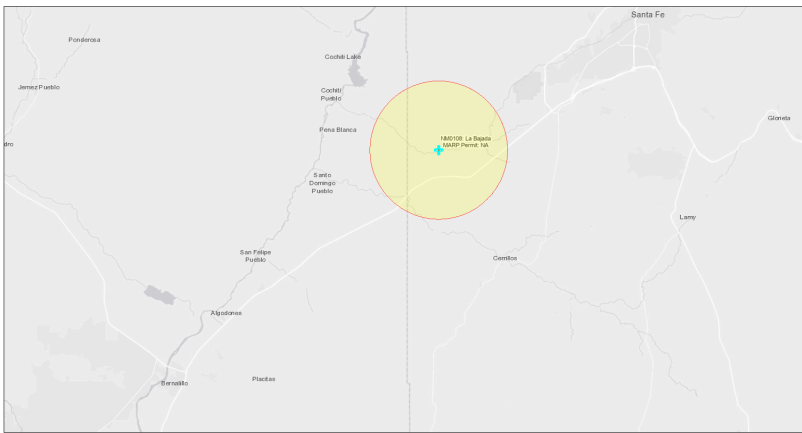
This report provides environmental and socioeconomic information for user-defined areas, and combines that data into environmental justice and supplemental indexes.

## La Bajada NM0108

5 miles Ring Centered at 35.549589,-106.208115

Population: 626

Area in square miles: 78.53

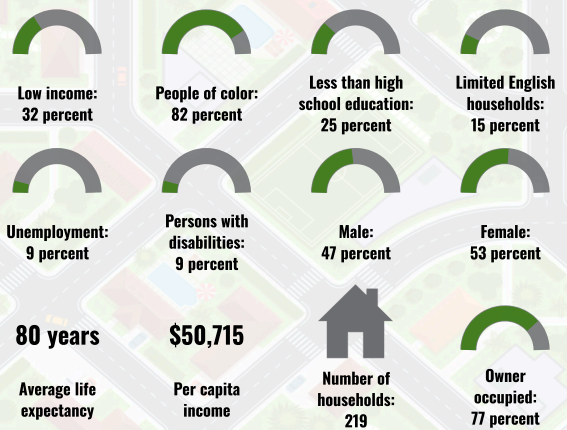


September 9, 2024  
 \* La Bajada NM0108  
 \* Abandoned Uranium Mines

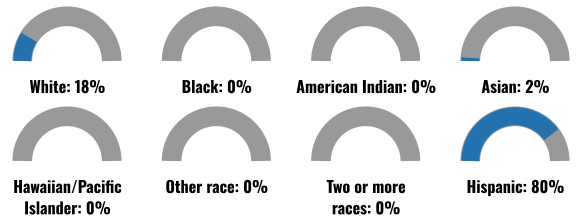


Map: Mexico Energy, Minerals and Natural Resources Department; Bureau of Land Management; Texas Parks & Wildlife; Esri; HERE; DeLorme; USGS; EPA; NOAA; Esri; HERE; DeLorme

### COMMUNITY INFORMATION



### BREAKDOWN BY RACE



### BREAKDOWN BY AGE



### LIMITED ENGLISH SPEAKING BREAKDOWN



### LANGUAGES SPOKEN AT HOME

LANGUAGE	PERCENT
English	57%
Spanish	41%
Korean	1%
Total Non-English	43%

Notes: Numbers may not sum to totals due to rounding. Hispanic population can be of any race. Source: U.S. Census Bureau, American Community Survey (ACS) 2018-2022. Life expectancy data comes from the Centers for Disease Control.

Report for 5 miles Ring Centered at 35.549589,-106.208115  
 Report produced September 9, 2024 using EJScreen Version 2.3

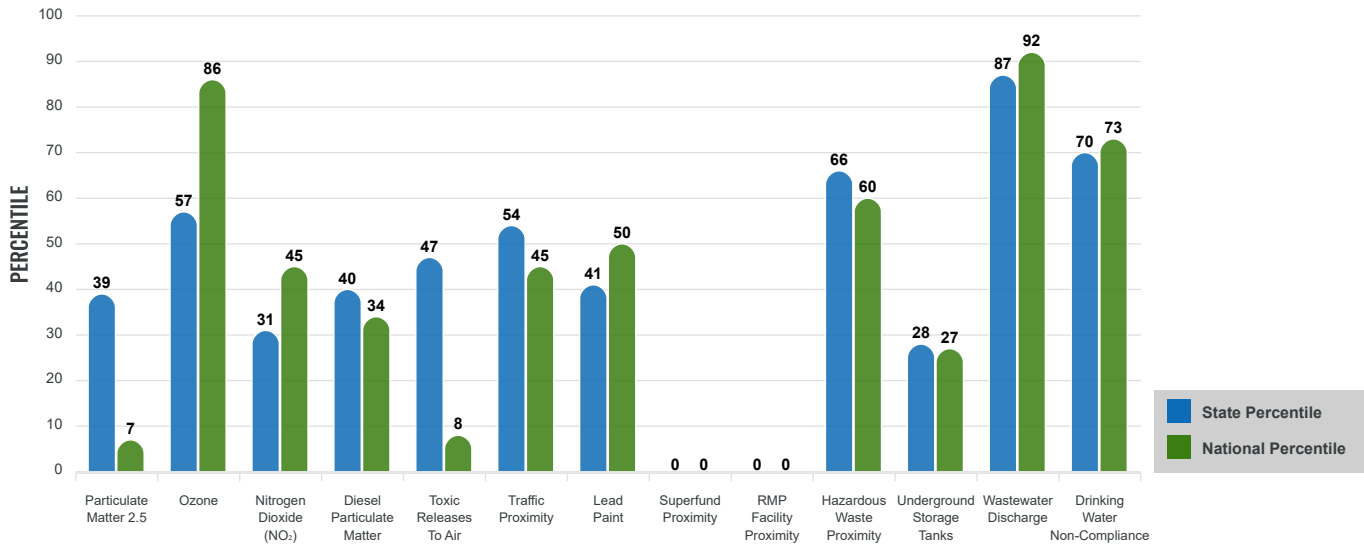
# Environmental Justice & Supplemental Indexes

The environmental justice and supplemental indexes are a combination of environmental and socioeconomic information. There are thirteen EJ indexes and supplemental indexes in EJScreen reflecting the 13 environmental indicators. The indexes for a selected area are compared to those for all other locations in the state or nation. For more information and calculation details on the EJ and supplemental indexes, please visit the [EJScreen website](#).

## EJ INDEXES

The EJ indexes help users screen for potential EJ concerns. To do this, the EJ index combines data on low income and people of color populations with a single environmental indicator.

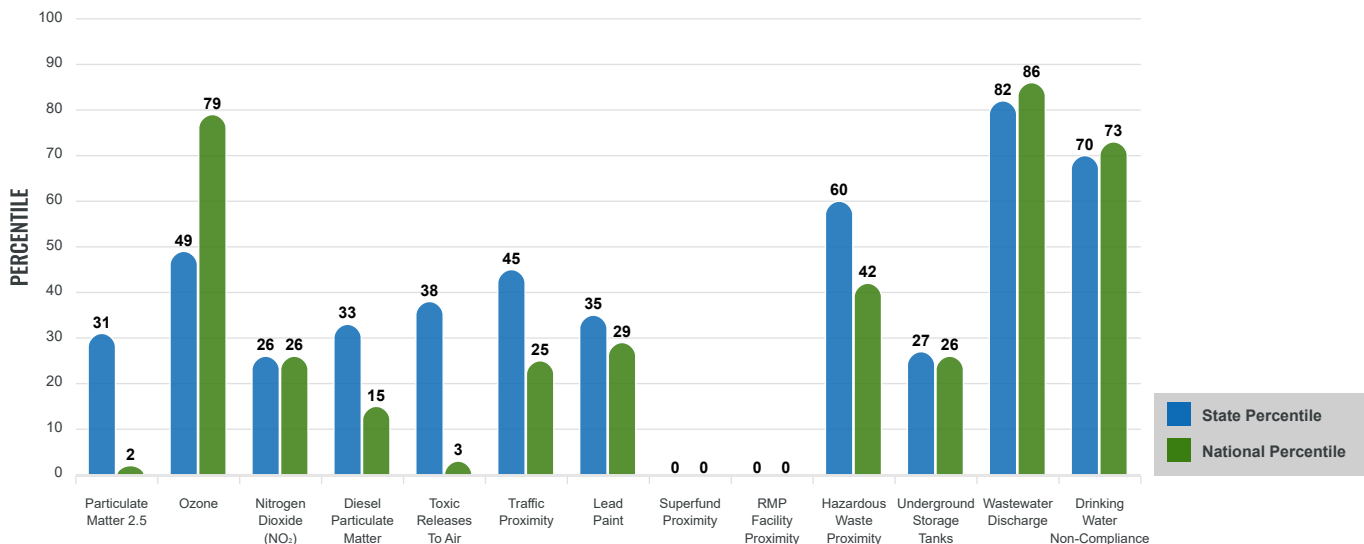
### EJ INDEXES FOR THE SELECTED LOCATION



## SUPPLEMENTAL INDEXES

The supplemental indexes offer a different perspective on community-level vulnerability. They combine data on percent low income, percent persons with disabilities, percent less than high school education, percent limited English speaking, and percent low life expectancy with a single environmental indicator.

### SUPPLEMENTAL INDEXES FOR THE SELECTED LOCATION



Report for 5 miles Ring Centered at 35.549589,-106.208115  
 Report produced September 9, 2024 using EJScreen Version 2.3

# EJScreen Environmental and Socioeconomic Indicators Data

SELECTED VARIABLES	VALUE	STATE AVERAGE	PERCENTILE IN STATE	USA AVERAGE	PERCENTILE IN USA
<b>ENVIRONMENTAL BURDEN INDICATORS</b>					
Particulate Matter 2.5 (µg/m <sup>3</sup> )	5.3	6.11	29	8.45	2
Ozone (ppb)	65.5	65.3	45	61.8	72
Nitrogen Dioxide (NO <sub>2</sub> ) (ppbv)	4.7	8.1	22	7.8	20
Diesel Particulate Matter (µg/m <sup>3</sup> )	0.0618	0.187	30	0.191	12
Toxic Releases to Air (toxicity-weighted concentration)	0.19	29	35	4,600	3
Traffic Proximity (daily traffic count/distance to road)	130,000	730,000	42	1,700,000	20
Lead Paint (% Pre-1960 Housing)	0.036	0.19	33	0.3	23
Superfund Proximity (site count/km distance)	0	0.34	0	0.39	0
RMP Facility Proximity (facility count/km distance)	0	0.2	0	0.57	0
Hazardous Waste Proximity (facility count/km distance)	0.49	1.2	53	3.5	33
Underground Storage Tanks (count/km <sup>2</sup> )	0.0011	2.8	28	3.6	27
Wastewater Discharge (toxicity-weighted concentration/m distance)	18000	990000	87	700000	91
Drinking Water Non-Compliance (points)	0.048	5.6	70	2.2	73
<b>SOCIOECONOMIC INDICATORS</b>					
Demographic Index USA	2.05	N/A	N/A	1.34	79
Supplemental Demographic Index USA	1.7	N/A	N/A	1.64	59
Demographic Index State	2.41	2.16	59	N/A	N/A
Supplemental Demographic Index State	1.46	1.62	44	N/A	N/A
People of Color	82%	62%	75	40%	84
Low Income	32%	39%	39	30%	59
Unemployment Rate	9%	6%	71	6%	77
Limited English Speaking Households	15%	6%	86	5%	90
Less Than High School Education	25%	14%	81	11%	87
Under Age 5	8%	5%	79	5%	78
Over Age 64	10%	20%	22	18%	26

\*Diesel particulate matter index is from the EPA's Air Toxics Data Update, which is the Agency's ongoing, comprehensive evaluation of air toxics in the United States. This effort aims to prioritize air toxics, emission sources, and locations of interest for further study. It is important to remember that the air toxics data presented here provide broad estimates of health risks over geographic areas of the country, not definitive risks to specific individuals or locations. More information on the Air Toxics Data Update can be found at: <https://www.epa.gov/haps/air-toxics-data-update>.

**Sites reporting to EPA within defined area:**

Superfund .....	0
Hazardous Waste, Treatment, Storage, and Disposal Facilities .....	0
Water Dischargers .....	8
Air Pollution .....	2
Brownfields .....	0
Toxic Release Inventory .....	0

**Other community features within defined area:**

Schools .....	0
Hospitals .....	0
Places of Worship .....	1

**Other environmental data:**

Air Non-attainment .....	No
Impaired Waters .....	Yes

Selected location contains American Indian Reservation Lands* .....	Yes
Selected location contains a "Justice40 (CEJST)" disadvantaged community .....	Yes
Selected location contains an EPA IRA disadvantaged community .....	Yes

Report for 5 miles Ring Centered at 35.549589,-106.208115  
 Report produced September 9, 2024 using EJScreen Version 2.3

## EJScreen Environmental and Socioeconomic Indicators Data

### HEALTH INDICATORS

INDICATOR	VALUE	STATE AVERAGE	STATE PERCENTILE	US AVERAGE	US PERCENTILE
Low Life Expectancy	15%	19%	11	20%	12
Heart Disease	5.3	5.9	34	5.8	44
Asthma	9.8	11.2	8	10.3	39
Cancer	6.3	6.1	55	6.4	44
Persons with Disabilities	9.1%	17.1%	8	13.7%	23

### CLIMATE INDICATORS

INDICATOR	VALUE	STATE AVERAGE	STATE PERCENTILE	US AVERAGE	US PERCENTILE
Flood Risk	8%	9%	60	12%	57
Wildfire Risk	97%	58%	69	14%	93

### CRITICAL SERVICE GAPS

INDICATOR	VALUE	STATE AVERAGE	STATE PERCENTILE	US AVERAGE	US PERCENTILE
Broadband Internet	21%	20%	61	13%	80
Lack of Health Insurance	11%	10%	66	9%	73
Housing Burden	No	N/A	N/A	N/A	N/A
Transportation Access Burden	Yes	N/A	N/A	N/A	N/A
Food Desert	Yes	N/A	N/A	N/A	N/A

Report for 5 miles Ring Centered at 35.549589,-106.208115

Report produced September 9, 2024 using EJScreen Version 2.3