

ABANDONED OR INACTIVE URANIUM  
MINES IN NEW MEXICO

A report of investigation carried out  
between August 1979 and May 1980 under  
contract with the New Mexico Energy and  
Minerals Department.

by

Orin J. Anderson

New Mexico Bureau of Mines and  
Mineral Resources  
Open-File Report 148

## INTRODUCTION

During the course of this investigation approximately 200 uranium mine sites were visited. Although these sites are distributed throughout 20 counties the majority are in McKinley, San Juan, and Valencia Counties, along the western and southern margin of the San Juan Basin. Other counties with an appreciable number of sites are Grant, Rio Arriba, Sandoval, Sierra, and Socorro.

Field work commenced in August, 1979 and extended although not continuously, into May, 1980. Information obtained during the on-site visits included location, type and size of mine, condition of mine, host formation, dimensions of remaining structures, proximity to residences or villages, water quality data, and radiation levels, although a gamma ray scintillometer was not obtained for the project until October 20, 1979. An effort was made to contact landowners whenever and wherever possible, however, no systematic attempt was made to determine land and mineral ownership during this phase of the investigation.

Mine operation data has been included where available. This consists of information on ore grades, production history mineralogy, and mine operator. Old publications of the U.S. AEC and the State Mine Inspectors office were helpful in this area.

The mine reports are arranged alphabetically by county with each county having its own index. A NM- or AZ-mine identification number is given with each mine name in the index. It is an AML numbering system devised by Don Baker, Jr. The first part of this

identification number is based on a U.S. Soil Conservation Service numbering system of 15' quadrangles beginning with 1 in the northwest corner of the state to 24 in the northeast corner, then returning to the western border to start a new tier. The second part refers to a 7½' quad within the 15' quad; these are numbered counterclockwise from 1 in the NE quadrant to 4 in the SE. The last part of the number refers to a particular mine within the 7½' quad. An AZ- prefix indicates the 15' quadrangle is an Arizona quad that overlaps the New Mexico state boundary.

Acknowledgments - The writer wishes to thank the following people for their valuable assistance in the field: Lars (Skip) Skotte, Richard Chamberlin, JoAnne Osburn, Mary Ann Anderson, and Cheryl Kyllonen.

A special thanks is extended to Mr. William Chenoweth of the U.S. Department of Energy, both for his time in the field as well as the claim maps and A.E.C. mine production records he provided. Mr. John Blagbrough provided helpful information about the Chuska district. The editorial assistance of Wyatt Brewster and Lars (Skip) Skotte is gratefully acknowledged.

The help and cooperation of the Navajo Tribe Office in Window Rock, Arizona permitted a statewide investigation to be completed; a note of thanks goes to Mr. R. Zaman and Mr. William Armstrong of that office.

SAN JUAN COUNTY

\*Preface to East Carrizo District Reports Page 1

\*Preface to Chuska District Reports Page 138

\*Other San Juan Co. Mine Reports Page 178

Quad: Pastora Peak 15'

1. AZ-20-0-1 Page 2

King #6 (Jimmy King #6)

2. AZ-20-0-2 Page 7

Barton & Begay (Beclabito lease)

3. AZ-20-0-3 Page 12

Rocky Flats #1

4. AZ-20-0-4 Page 15

Canyon #1

5. AZ-20-0-5 Page ~~20~~ 21

John John #1

6. AZ-20-0-6 Page ~~23~~ 24

Jimmy King #2

7. AZ-20-0-7 Page ~~27~~ 28

Rocky Flats #2

8. AZ-20-0-8 Page ~~31~~ 32

Cottonwood Butte Mine (VCA Plot 8)

9. AZ-20-0-9 Page ~~37~~ 38

Lone Star (on VCA Plot #9)

## PREFACE TO EAST CARRIZO DISTRICT REPORTS

The East Carrizo District lies along or within several miles of the Arizona border in townships 29 and 30 N., and ranges 20 and 21 west.

The area is covered on the Pastora Peak and Redrock Valley 15' topographic quadrangles, but is largely unsurveyed. A land net was projected in solely to determine if our locations agreed with those given in other publications such as Hilpert, L., (1969), and does not appear on the East Carrizo District claim maps (after AEC, 1953, Claim Maps, East Carrizo District) that accompany each report.

These claim maps were provided for our use on this project by Mr. William Chenoweth of the U.S. Department of Energy, Grand Junction Office, Grand Junction, Colorado. They show access roads, drainage lines, and the claims in the area as of 1953. The only scale they carry is the mile post markers along the New Mexico/Arizona state line.

*Orin J. Anderson*

*New Mexico Bureau of Mines and Mineral Resources  
Socorro, New Mexico  
June, 1980*

Date Visited 10/31/79

Mine name(s) Rocky Flats #1 (Rocky #1) County San Juan

Section (unsurveyed) Probably 24 Twnsh. 30 N R. 21 W

Quadrangle sheet Pastora Peak 15'

Mining district East Carrizo

Elevation 5800'

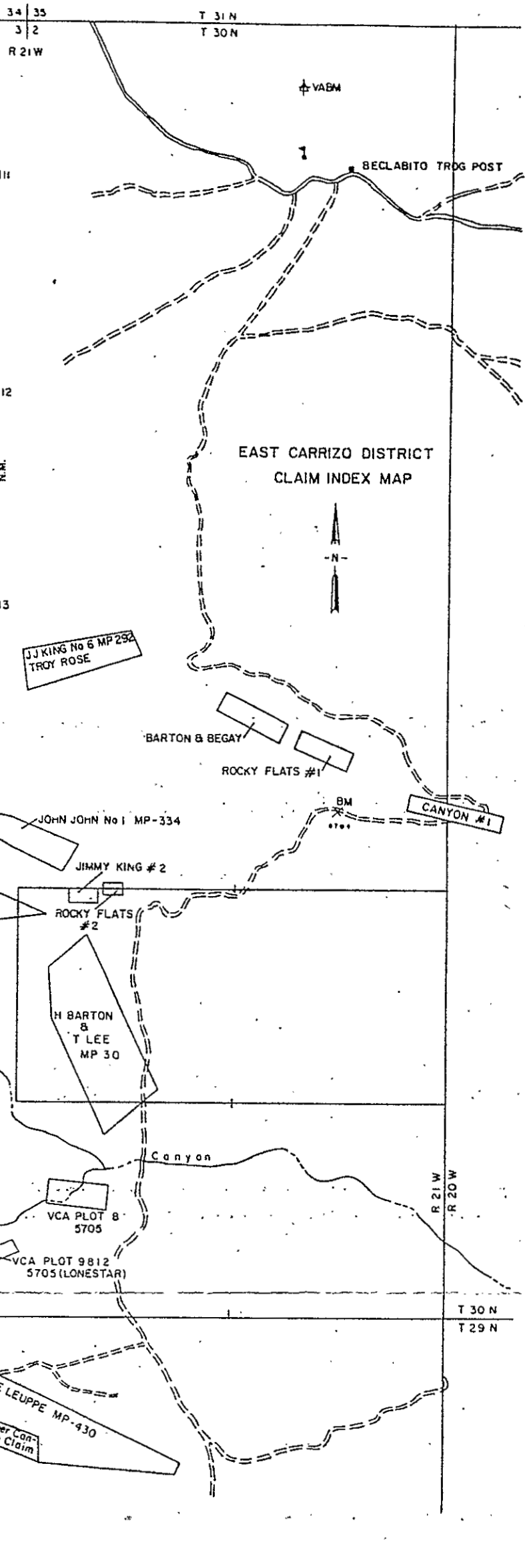
Nearest city and/or dwelling Reclabito; 2½ mi. N

Rocky Flats #1 lies about 600' southeast of the Barton and Begay workings. It produced from a 60' long rim cut with an 8' stub adit on east side of a supporting pillar (see photos a & b); vanadium stained zones on the face give scintillometer readings up to 1200 cps; generally readings in the cut are 300-400 cps. A minor amount of mine tailings are visible down slope from the cut.

Ore was mined in the Salt Wash member of the Morrison fm. Uranium occurs in association with vanadium; u:v ratio in this area is about 1:10. The mine was operated intermittently from 1950 to 1955, initially by Barton & Lee and later by Barrett & Smith Mining Co. Total production (which includes any ore that might have been produced at the Rocky Flats #2) was 698 tons of  $U_3O_8$  and 34,154 lbs. of  $V_2O_5$ .

The mine is located on the claim index map, just southeast of the Barton and Begay claims. Records seem to indicate a Sec. 24 location rather than Sec. 14, as Hilpert, 1969, p. 52 indicated (claim index map is attached).

- References:
- (1) Chenoweth, W.L., 1980, Historical Review of Uranium-Vanadium in The Eastern Carrizo Mountains, San Juan County, New Mexico, U.S. DOE, TM-210.
  - (2) Hilpert, L., 1969, Uranium Resources of Northwest New Mexico; USGS pp. 603, p. 52.
  - (3) East Carrizo District Claim Index Map, 1953.



SJ-13

Upper & Lower Canyon Claims  
CATO SELLS MP-56

Upper Canyon Claims  
PETTIGREW  
MP-337  
(Leroy MP-550)

Lower Canyon Claim

E LEUPPE MP-430



Photo (a) Rocky Flats #1; looking west into rim cut and stub adit.



Photo (b) Rocky Flats #1; close-up of pillar and stub adit shown in center of photo a.