

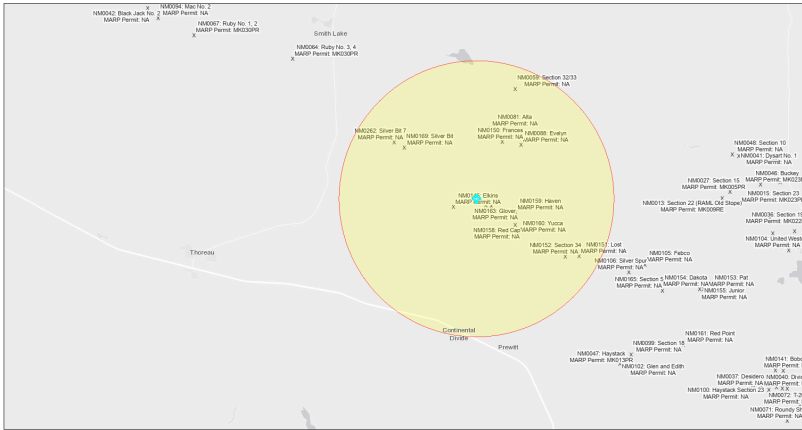


EJScreen Community Report

This report provides environmental and socioeconomic information for user-defined areas, and combines that data into environmental justice and supplemental indexes.

Billy the Kid NM0139

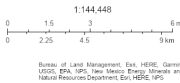
5 miles Ring Centered at 35.432728,-108.041232
 Population: 562
 Area in square miles: 78.53



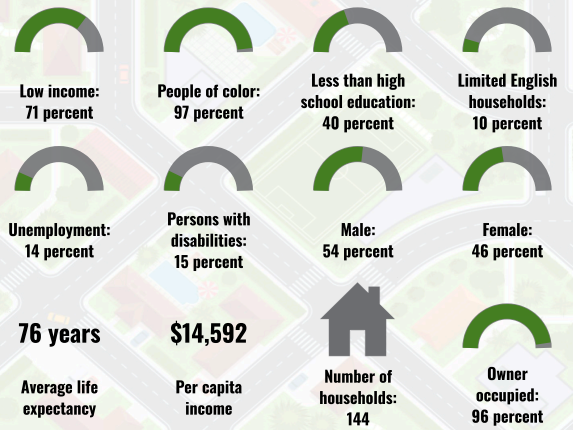
September 23, 2024

Billy the Kid NM0139

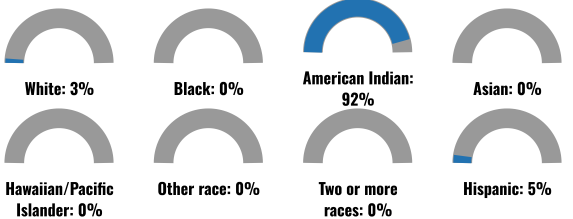
* Abandoned Uranium Mines



COMMUNITY INFORMATION



BREAKDOWN BY RACE



BREAKDOWN BY AGE



LIMITED ENGLISH SPEAKING BREAKDOWN



LANGUAGES SPOKEN AT HOME

LANGUAGE	PERCENT
English	31%
Other and Unspecified	69%
Total Non-English	69%

Notes: Numbers may not sum to totals due to rounding. Hispanic population can be of any race. Source: U.S. Census Bureau American Community Survey (ACS) 2018-2022. Life expectancy data comes from the Centers for Disease Control.

Report for 5 miles Ring Centered at 35.432728,-108.041232
 Report produced September 23, 2024 using EJScreen Version 2.3

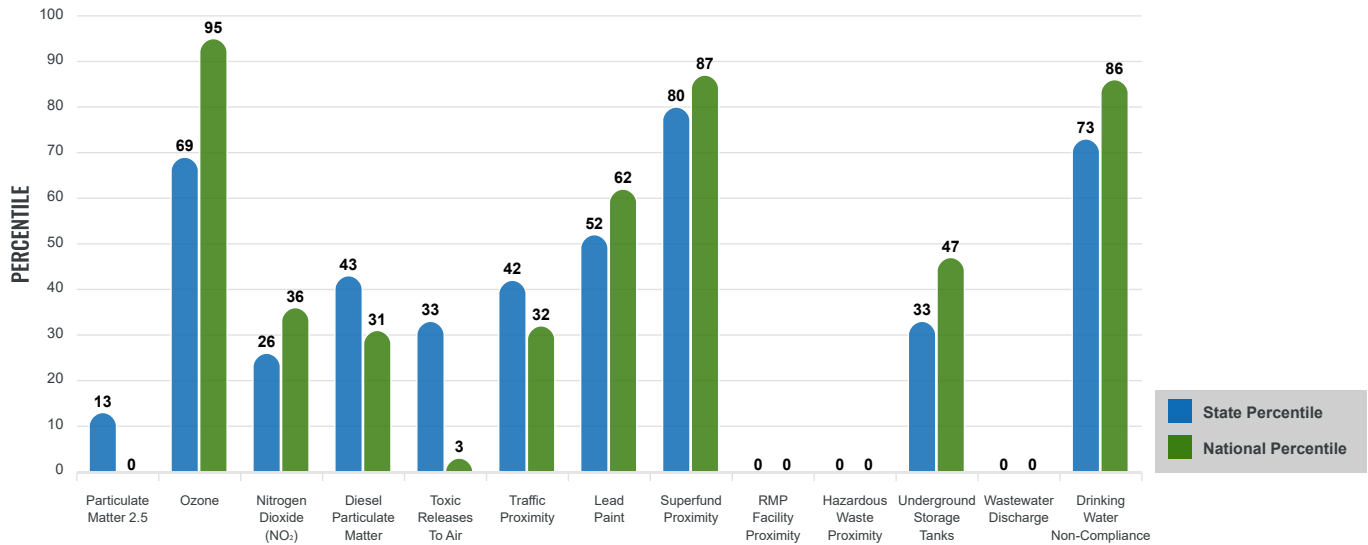
Environmental Justice & Supplemental Indexes

The environmental justice and supplemental indexes are a combination of environmental and socioeconomic information. There are thirteen EJ indexes and supplemental indexes in EJScreen reflecting the 13 environmental indicators. The indexes for a selected area are compared to those for all other locations in the state or nation. For more information and calculation details on the EJ and supplemental indexes, please visit the [EJScreen website](#).

EJ INDEXES

The EJ indexes help users screen for potential EJ concerns. To do this, the EJ index combines data on low income and people of color populations with a single environmental indicator.

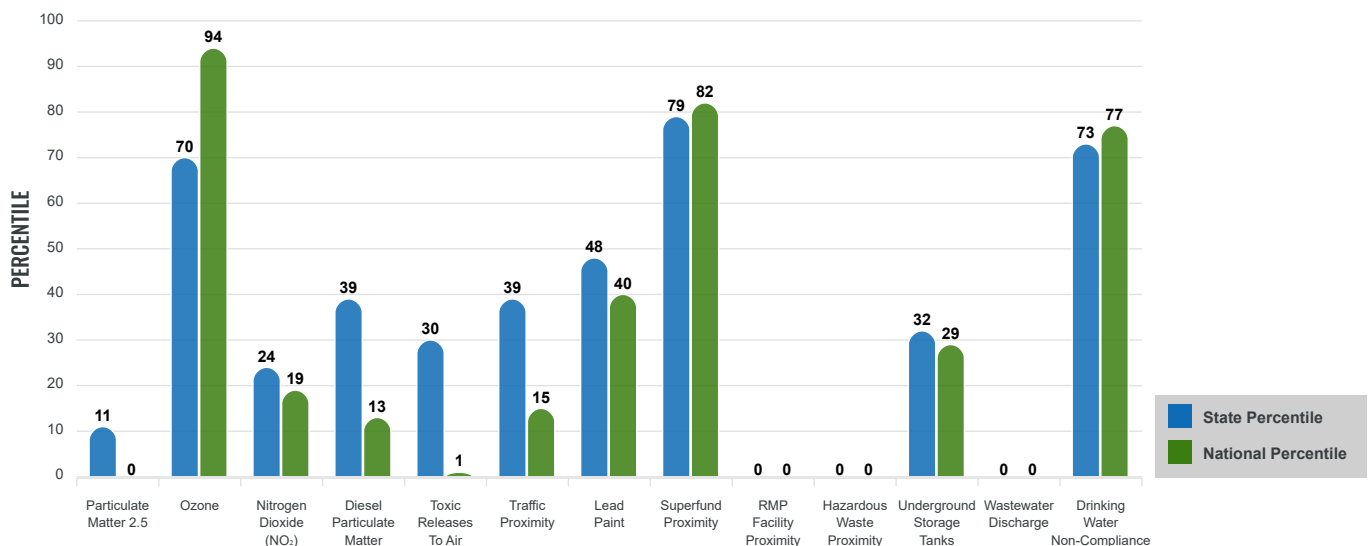
EJ INDEXES FOR THE SELECTED LOCATION



SUPPLEMENTAL INDEXES

The supplemental indexes offer a different perspective on community-level vulnerability. They combine data on percent low income, percent persons with disabilities, percent less than high school education, percent limited English speaking, and percent low life expectancy with a single environmental indicator.

SUPPLEMENTAL INDEXES FOR THE SELECTED LOCATION



Report for 5 miles Ring Centered at 35.432728,-108.041232

Report produced September 23, 2024 using EJScreen Version 2.3

EJScreen Environmental and Socioeconomic Indicators Data

SELECTED VARIABLES	VALUE	STATE AVERAGE	PERCENTILE IN STATE	USA AVERAGE	PERCENTILE IN USA
ENVIRONMENTAL BURDEN INDICATORS					
Particulate Matter 2.5 (µg/m ³)	4.64	6.11	6	8.45	0
Ozone (ppb)	64.7	65.3	37	61.8	69
Nitrogen Dioxide (NO ₂) (ppbv)	3.3	8.1	12	7.8	9
Diesel Particulate Matter (µg/m ³)	0.0468	0.187	24	0.191	7
Toxic Releases to Air (toxicity-weighted concentration)	0.001	29	16	4,600	1
Traffic Proximity (daily traffic count/distance to road)	33,000	730,000	24	1,700,000	9
Lead Paint (% Pre-1960 Housing)	0.027	0.19	30	0.3	21
Superfund Proximity (site count/km distance)	0.26	0.34	76	0.39	74
RMP Facility Proximity (facility count/km distance)	0	0.2	0	0.57	0
Hazardous Waste Proximity (facility count/km distance)	0	1.2	0	3.5	0
Underground Storage Tanks (count/km ²)	0.015	2.8	32	3.6	28
Wastewater Discharge (toxicity-weighted concentration/m distance)	0	990000	0	700000	0
Drinking Water Non-Compliance (points)	0.36	5.6	72	2.2	75
SOCIOECONOMIC INDICATORS					
Demographic Index USA	3.2	N/A	N/A	1.34	97
Supplemental Demographic Index USA	2.79	N/A	N/A	1.64	94
Demographic Index State	3.58	2.16	95	N/A	N/A
Supplemental Demographic Index State	2.52	1.62	89	N/A	N/A
People of Color	97%	62%	92	40%	94
Low Income	71%	39%	90	30%	94
Unemployment Rate	15%	6%	89	6%	92
Limited English Speaking Households	10%	6%	79	5%	85
Less Than High School Education	40%	14%	95	11%	96
Under Age 5	4%	5%	52	5%	45
Over Age 64	12%	20%	28	18%	32

*Diesel particulate matter index is from the EPA's Air Toxics Data Update, which is the Agency's ongoing, comprehensive evaluation of air toxics in the United States. This effort aims to prioritize air toxics, emission sources, and locations of interest for further study. It is important to remember that the air toxics data presented here provide broad estimates of health risks over geographic areas of the country, not definitive risks to specific individuals or locations. More information on the Air Toxics Data Update can be found at: <https://www.epa.gov/haps/air-toxics-data-update>.

Sites reporting to EPA within defined area:

Superfund	1
Hazardous Waste, Treatment, Storage, and Disposal Facilities	0
Water Dischargers	12
Air Pollution	4
Brownfields	2
Toxic Release Inventory	2

Other community features within defined area:

Schools	1
Hospitals	0
Places of Worship	1

Other environmental data:

Air Non-attainment	No
Impaired Waters	No

Selected location contains American Indian Reservation Lands*	Yes
Selected location contains a "Justice40 (CEJST)" disadvantaged community	Yes
Selected location contains an EPA IRA disadvantaged community	Yes

*Report for 5 miles Ring Centered at 35.432728,-108.041232
Report produced September 23, 2024 using EJScreen Version 2.3*

EJScreen Environmental and Socioeconomic Indicators Data

HEALTH INDICATORS

INDICATOR	VALUE	STATE AVERAGE	STATE PERCENTILE	US AVERAGE	US PERCENTILE
Low Life Expectancy	23%	19%	79	20%	78
Heart Disease	9.2	5.9	96	5.8	96
Asthma	15.8	11.2	99	10.3	99
Cancer	5.2	6.1	27	6.4	25
Persons with Disabilities	14.5%	17.1%	40	13.7%	61

CLIMATE INDICATORS

INDICATOR	VALUE	STATE AVERAGE	STATE PERCENTILE	US AVERAGE	US PERCENTILE
Flood Risk	10%	9%	70	12%	67
Wildfire Risk	40%	58%	36	14%	85

CRITICAL SERVICE GAPS

INDICATOR	VALUE	STATE AVERAGE	STATE PERCENTILE	US AVERAGE	US PERCENTILE
Broadband Internet	71%	20%	98	13%	99
Lack of Health Insurance	17%	10%	87	9%	89
Housing Burden	No	N/A	N/A	N/A	N/A
Transportation Access Burden	Yes	N/A	N/A	N/A	N/A
Food Desert	Yes	N/A	N/A	N/A	N/A

Report for 5 miles Ring Centered at 35.432728,-108.041232

Report produced September 23, 2024 using EJScreen Version 2.3

Location: User-specified point center at 35.432728, -108.041232
 Ring (buffer): 5-miles radius
 Description: Billy the Kid NM0139

Summary of ACS Estimates		2018 - 2022
Population		562
Population Density (per sq. mile)		7
People of Color Population		546
% People of Color Population		97%
Households		144
Housing Units		178
Housing Units Built Before 1950		3
Per Capita Income		14,592
Land Area (sq. miles) (Source: SF1)		81.86
% Land Area		100%
Water Area (sq. miles) (Source: SF1)		0.18
% Water Area		0%

	2018 - 2022 ACS Estimates	Percent	MOE (±)
Population by Race			
Total	562	100%	427
Population Reporting One Race	554	99%	632
White	34	6%	153
Black	0	0%	13
American Indian	520	92%	427
Asian	0	0%	13
Pacific Islander	0	0%	13
Some Other Race	0	0%	13
Population Reporting Two or More Races	8	1%	49
Total Hispanic Population	26	5%	132
Total Non-Hispanic Population	536		
White Alone	17	3%	90
Black Alone	0	0%	13
American Indian Alone	519	92%	428
Non-Hispanic Asian Alone	0	0%	13
Pacific Islander Alone	0	0%	13
Other Race Alone	0	0%	13
Two or More Races Alone	0	0%	13
Population by Sex			
Male	302	54%	368
Female	260	46%	149
Population by Age			
Age 0-4	24	4%	69
Age 0-17	175	31%	232
Age 18+	388	69%	249
Age 65+	66	12%	93

Data Note: Detail may not sum to totals due to rounding. Hispanic population can be of any race.

N/A means not available. **Source:** U.S. Census Bureau, American Community Survey (ACS) 2018 - 2022

Location: User-specified point center at 35.432728, -108.041232
 Ring (buffer): 5-miles radius
 Description: Billy the Kid NM0139

	2018 - 2022 ACS Estimates	Percent	MOE (±)
Population 25+ by Educational Attainment			
Total	343	100%	225
Less than 9th Grade	50	15%	111
9th - 12th Grade, No Diploma	86	25%	148
High School Graduate	109	32%	132
Some College, No Degree	64	19%	123
Associate Degree	9	3%	16
Bachelor's Degree or more	24	7%	68
Population Age 5+ Years by Ability to Speak English			
Total	539	100%	388
Speak only English	218	40%	374
Non-English at Home ¹⁺²⁺³⁺⁴	321	60%	236
¹ Speak English "very well"	253	47%	237
² Speak English "well"	43	8%	108
³ Speak English "not well"	24	4%	73
⁴ Speak English "not at all"	1	0%	43
³⁺⁴ Speak English "less than well"	25	5%	85
²⁺³⁺⁴ Speak English "less than very well"	68	13%	137
Limited English Speaking Households*			
Total	14	100%	44
Speak Spanish	0	0%	13
Speak Other Indo-European Languages	0	0%	13
Speak Asian-Pacific Island Languages	0	0%	13
Speak Other Languages	14	100%	38
Households by Household Income			
Household Income Base	144	100%	96
< \$15,000	47	33%	88
\$15,000 - \$25,000	19	13%	64
\$25,000 - \$50,000	29	20%	63
\$50,000 - \$75,000	18	12%	41
\$75,000 +	32	22%	108
Occupied Housing Units by Tenure			
Total	144	100%	96
Owner Occupied	139	96%	97
Renter Occupied	5	4%	12
Employed Population Age 16+ Years			
Total	413	100%	237
In Labor Force	181	44%	212
Civilian Unemployed in Labor Force	26	14%	55
Not In Labor Force	232	56%	163

Data Note: Detail may not sum to totals due to rounding. Hispanic population can be of anyrace.

N/A means not available. **Source:** U.S. Census Bureau, American Community Survey (ACS)

*Households in which no one 14 and over speaks English "very well" or speaks English only.

Location: User-specified point center at 35.432728, -108.041232

Ring (buffer): 5-miles radius

Description: Billy the Kid NM0139

	2018 - 2022 ACS Estimates	Percent	MOE (±)
Population by Language Spoken at Home*			
Total (persons age 5 and above)	669	100%	328
English	204	31%	133
Spanish	0	0%	13
French, Haitian, or Cajun	0	0%	13
German or other West Germanic	0	0%	13
Russian, Polish, or Other Slavic	0	0%	13
Other Indo-European	0	0%	13
Korean	0	0%	13
Chinese (including Mandarin, Cantonese)	0	0%	13
Vietnamese	0	0%	13
Tagalog (including Filipino)	0	0%	13
Other Asian and Pacific Island	0	0%	13
Arabic	0	0%	13
Other and Unspecified	465	69%	266
Total Non-English	465	69%	354

Data Note: Detail may not sum to totals due to rounding. Hispanic population can be of any race.
N/A means not available. **Source:** U.S. Census Bureau, American Community Survey (ACS) 2018 - 2022.
*Population by Language Spoken at Home is available at the census tract summary level and up.