

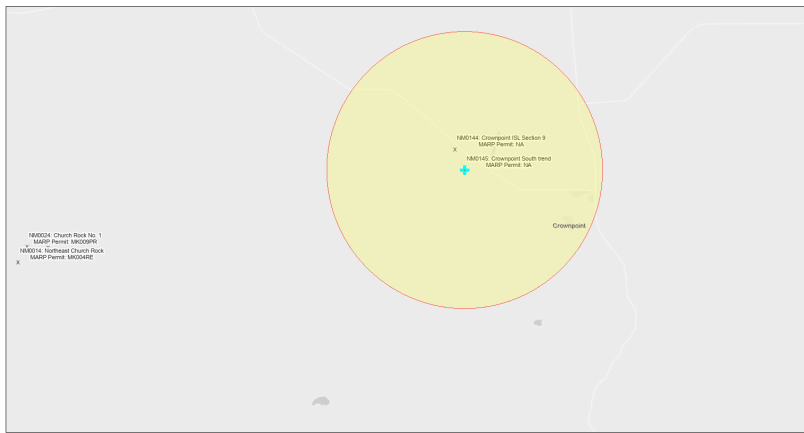


EJScreen Community Report

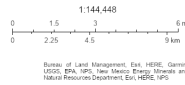
This report provides environmental and socioeconomic information for user-defined areas, and combines that data into environmental justice and supplemental indexes.

Crownpoint South Trend NM0145

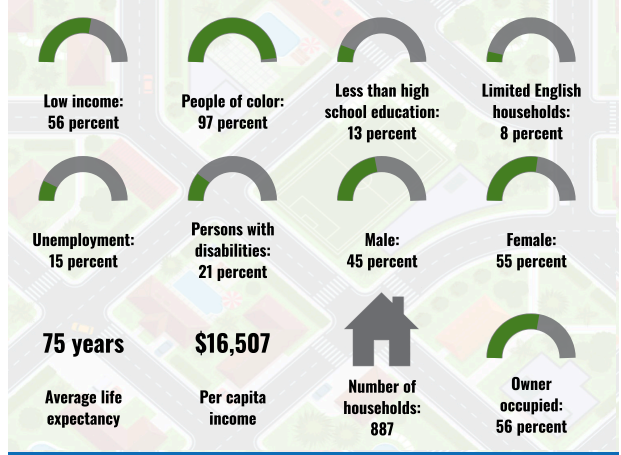
5 miles Ring Centered at 35.706684,-108.220530
 Population: 2,922
 Area in square miles: 78.53



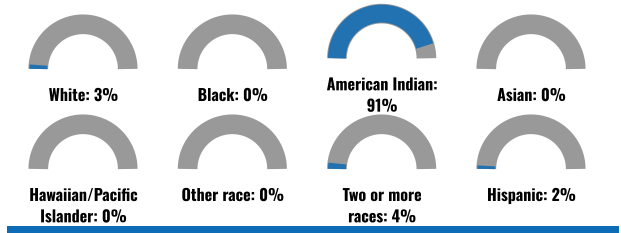
September 24, 2024
 Crownpoint South Trend NM0145
 Abandoned Uranium Mines



COMMUNITY INFORMATION



BREAKDOWN BY RACE



BREAKDOWN BY AGE



LIMITED ENGLISH SPEAKING BREAKDOWN



LANGUAGES SPOKEN AT HOME

LANGUAGE	PERCENT
English	40%
Other and Unspecified	60%
Total Non-English	60%

Notes: Numbers may not sum to totals due to rounding. Hispanic population can be of any race. Source: U.S. Census Bureau, American Community Survey (ACS) 2018-2022. Life expectancy data comes from the Centers for Disease Control.

Report for 5 miles Ring Centered at 35.706684,-108.220530
 Report produced September 24, 2024 using EJScreen Version 2.3

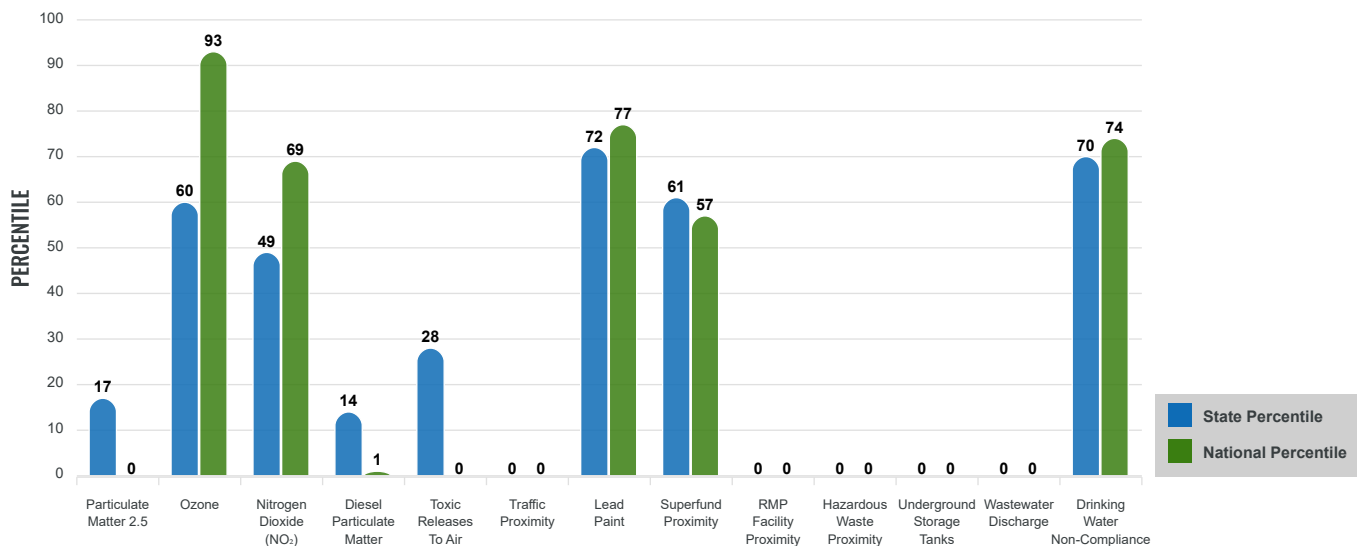
Environmental Justice & Supplemental Indexes

The environmental justice and supplemental indexes are a combination of environmental and socioeconomic information. There are thirteen EJ indexes and supplemental indexes in EJScreen reflecting the 13 environmental indicators. The indexes for a selected area are compared to those for all other locations in the state or nation. For more information and calculation details on the EJ and supplemental indexes, please visit the [EJScreen website](#).

EJ INDEXES

The EJ indexes help users screen for potential EJ concerns. To do this, the EJ index combines data on low income and people of color populations with a single environmental indicator.

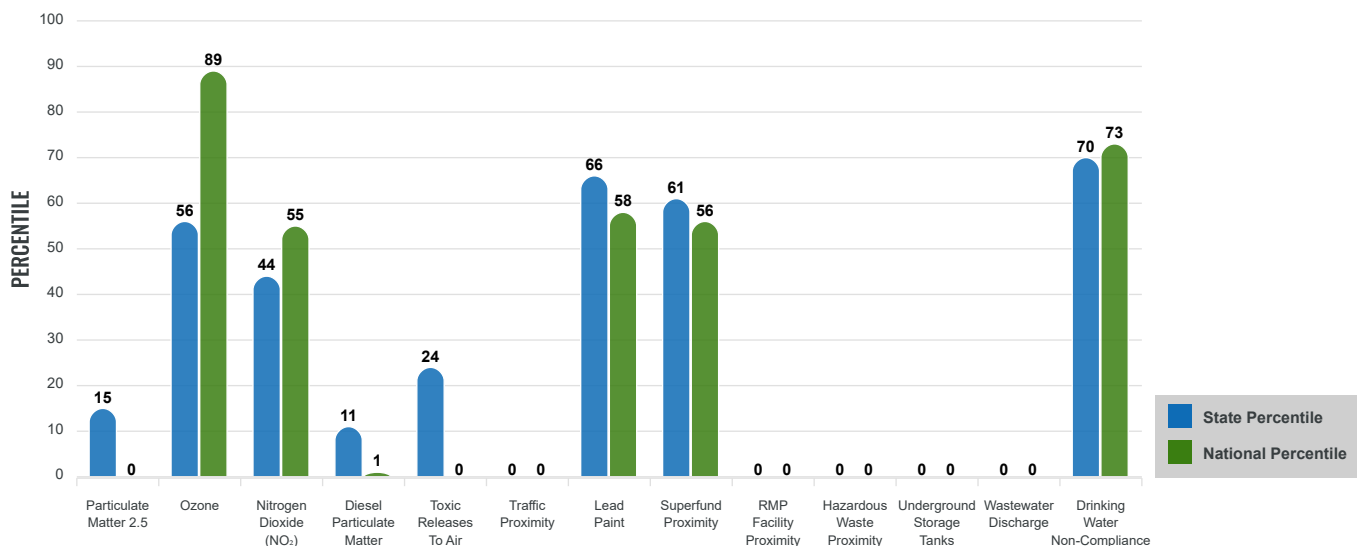
EJ INDEXES FOR THE SELECTED LOCATION



SUPPLEMENTAL INDEXES

The supplemental indexes offer a different perspective on community-level vulnerability. They combine data on percent low income, percent persons with disabilities, percent less than high school education, percent limited English speaking, and percent low life expectancy with a single environmental indicator.

SUPPLEMENTAL INDEXES FOR THE SELECTED LOCATION



Report for 5 miles Ring Centered at 35.706684,-108.220530

Report produced September 24, 2024 using EJScreen Version 2.3

EJScreen Environmental and Socioeconomic Indicators Data

SELECTED VARIABLES	VALUE	STATE AVERAGE	PERCENTILE IN STATE	USA AVERAGE	PERCENTILE IN USA
ENVIRONMENTAL BURDEN INDICATORS					
Particulate Matter 2.5 (µg/m ³)	4.77	6.11	9	8.45	0
Ozone (ppb)	64.1	65.3	35	61.8	67
Nitrogen Dioxide (NO ₂) (ppbv)	5.8	8.1	28	7.8	31
Diesel Particulate Matter (µg/m ³)	0.0177	0.187	7	0.191	0
Toxic Releases to Air (toxicity-weighted concentration)	0	29	14	4,600	0
Traffic Proximity (daily traffic count/distance to road)	0	730,000	0	1,700,000	0
Lead Paint (% Pre-1960 Housing)	0.13	0.19	56	0.3	39
Superfund Proximity (site count/km distance)	0.0059	0.34	61	0.39	56
RMP Facility Proximity (facility count/km distance)	0	0.2	0	0.57	0
Hazardous Waste Proximity (facility count/km distance)	0	1.2	0	3.5	0
Underground Storage Tanks (count/km ²)	0	2.8	0	3.6	0
Wastewater Discharge (toxicity-weighted concentration/m distance)	0	990000	0	700000	0
Drinking Water Non-Compliance (points)	0.17	5.6	72	2.2	74
SOCIOECONOMIC INDICATORS					
Demographic Index USA	2.85	N/A	N/A	1.34	93
Supplemental Demographic Index USA	2.37	N/A	N/A	1.64	86
Demographic Index State	3.25	2.16	88	N/A	N/A
Supplemental Demographic Index State	2.11	1.62	77	N/A	N/A
People of Color	97%	62%	93	40%	94
Low Income	56%	39%	74	30%	86
Unemployment Rate	15%	6%	88	6%	91
Limited English Speaking Households	8%	6%	75	5%	82
Less Than High School Education	13%	14%	59	11%	68
Under Age 5	2%	5%	33	5%	27
Over Age 64	11%	20%	25	18%	30

*Diesel particulate matter index is from the EPA's Air Toxics Data Update, which is the Agency's ongoing, comprehensive evaluation of air toxics in the United States. This effort aims to prioritize air toxics, emission sources, and locations of interest for further study. It is important to remember that the air toxics data presented here provide broad estimates of health risks over geographic areas of the country, not definitive risks to specific individuals or locations. More information on the Air Toxics Data Update can be found at: <https://www.epa.gov/haps/air-toxics-data-update>.

Sites reporting to EPA within defined area:

Superfund	0
Hazardous Waste, Treatment, Storage, and Disposal Facilities	0
Water Dischargers	52
Air Pollution	2
Brownfields	0
Toxic Release Inventory	0

Other community features within defined area:

Schools	4
Hospitals	1
Places of Worship	1

Other environmental data:

Air Non-attainment	No
Impaired Waters	No

Selected location contains American Indian Reservation Lands*	Yes
Selected location contains a "Justice40 (CEJST)" disadvantaged community	Yes
Selected location contains an EPA IRA disadvantaged community	Yes

Report for 5 miles Ring Centered at 35.706684,-108.220530
 Report produced September 24, 2024 using EJScreen Version 2.3

EJScreen Environmental and Socioeconomic Indicators Data

HEALTH INDICATORS

INDICATOR	VALUE	STATE AVERAGE	STATE PERCENTILE	US AVERAGE	US PERCENTILE
Low Life Expectancy	23%	19%	83	20%	80
Heart Disease	7.5	5.9	86	5.8	83
Asthma	15.1	11.2	96	10.3	99
Cancer	5.2	6.1	30	6.4	25
Persons with Disabilities	21.2%	17.1%	75	13.7%	88

CLIMATE INDICATORS

INDICATOR	VALUE	STATE AVERAGE	STATE PERCENTILE	US AVERAGE	US PERCENTILE
Flood Risk	3%	9%	38	12%	31
Wildfire Risk	0%	58%	0	14%	0

CRITICAL SERVICE GAPS

INDICATOR	VALUE	STATE AVERAGE	STATE PERCENTILE	US AVERAGE	US PERCENTILE
Broadband Internet	62%	20%	96	13%	99
Lack of Health Insurance	22%	10%	94	9%	94
Housing Burden	No	N/A	N/A	N/A	N/A
Transportation Access Burden	Yes	N/A	N/A	N/A	N/A
Food Desert	Yes	N/A	N/A	N/A	N/A

Report for 5 miles Ring Centered at 35.706684,-108.220530

Report produced September 24, 2024 using EJScreen Version 2.3

Location: User-specified point center at 35.706684, -108.220530
 Ring (buffer): 5-miles radius
 Description: Crownpoint South Trend NM0145

Summary of ACS Estimates		2018 - 2022
Population		2,922
Population Density (per sq. mile)		39
People of Color Population		2,842
% People of Color Population		97%
Households		887
Housing Units		1,112
Housing Units Built Before 1950		16
Per Capita Income		16,507
Land Area (sq. miles) (Source: SF1)		74.94
% Land Area		100%
Water Area (sq. miles) (Source: SF1)		0.01
% Water Area		0%

	2018 - 2022 ACS Estimates	Percent	MOE (±)
Population by Race			
Total	2,922	100%	387
Population Reporting One Race	2,808	96%	508
White	88	3%	56
Black	9	0%	20
American Indian	2,694	92%	386
Asian	13	0%	20
Pacific Islander	0	0%	13
Some Other Race	3	0%	13
Population Reporting Two or More Races	115	4%	134
Total Hispanic Population	64	2%	42
Total Non-Hispanic Population	2,858		
White Alone	81	3%	56
Black Alone	0	0%	13
American Indian Alone	2,657	91%	386
Non-Hispanic Asian Alone	13	0%	20
Pacific Islander Alone	0	0%	13
Other Race Alone	0	0%	13
Two or More Races Alone	107	4%	132
Population by Sex			
Male	1,308	45%	174
Female	1,614	55%	295
Population by Age			
Age 0-4	70	2%	25
Age 0-17	679	23%	176
Age 18+	2,244	77%	247
Age 65+	331	11%	70

Data Note: Detail may not sum to totals due to rounding. Hispanic population can be of any race.

N/A means not available. **Source:** U.S. Census Bureau, American Community Survey (ACS) 2018 - 2022

Location: User-specified point center at 35.706684, -108.220530

Ring (buffer): 5-miles radius

Description: Crownpoint South Trend NM0145

	2018 - 2022 ACS Estimates	Percent	MOE (±)
Population 25+ by Educational Attainment			
Total	2,018	100%	346
Less than 9th Grade	120	6%	60
9th - 12th Grade, No Diploma	142	7%	63
High School Graduate	887	44%	208
Some College, No Degree	446	22%	86
Associate Degree	214	11%	119
Bachelor's Degree or more	209	10%	65
Population Age 5+ Years by Ability to Speak English			
Total	2,852	100%	382
Speak only English	1,161	41%	236
Non-English at Home ¹⁺²⁺³⁺⁴	1,691	59%	329
¹ Speak English "very well"	1,463	51%	325
² Speak English "well"	195	7%	69
³ Speak English "not well"	22	1%	75
⁴ Speak English "not at all"	11	0%	46
³⁺⁴ Speak English "less than well"	33	1%	87
²⁺³⁺⁴ Speak English "less than very well"	228	8%	111
Limited English Speaking Households*			
Total	70	100%	36
Speak Spanish	0	0%	13
Speak Other Indo-European Languages	0	0%	13
Speak Asian-Pacific Island Languages	0	0%	13
Speak Other Languages	70	100%	28
Households by Household Income			
Household Income Base	887	100%	160
< \$15,000	330	37%	156
\$15,000 - \$25,000	78	9%	62
\$25,000 - \$50,000	163	18%	38
\$50,000 - \$75,000	60	7%	25
\$75,000 +	255	29%	81
Occupied Housing Units by Tenure			
Total	887	100%	160
Owner Occupied	493	56%	73
Renter Occupied	394	44%	163
Employed Population Age 16+ Years			
Total	2,371	100%	360
In Labor Force	1,106	47%	220
Civilian Unemployed in Labor Force	162	15%	53
Not In Labor Force	1,265	53%	194

Data Note: Detail may not sum to totals due to rounding. Hispanic population can be of anyrace.

N/A means not available. **Source:** U.S. Census Bureau, American Community Survey (ACS)

*Households in which no one 14 and over speaks English "very well" or speaks English only.

Location: User-specified point center at 35.706684, -108.220530

Ring (buffer): 5-miles radius

Description: Crownpoint South Trend NM0145

	2018 - 2022 ACS Estimates	Percent	MOE (±)
Population by Language Spoken at Home*			
Total (persons age 5 and above)	1,247	100%	508
English	495	40%	297
Spanish	6	0%	7
French, Haitian, or Cajun	0	0%	13
German or other West Germanic	0	0%	13
Russian, Polish, or Other Slavic	0	0%	13
Other Indo-European	0	0%	13
Korean	0	0%	13
Chinese (including Mandarin, Cantonese)	0	0%	13
Vietnamese	0	0%	13
Tagalog (including Filipino)	2	0%	7
Other Asian and Pacific Island	0	0%	13
Arabic	0	0%	13
Other and Unspecified	745	60%	377
Total Non-English	752	60%	588

Data Note: Detail may not sum to totals due to rounding. Hispanic population can be of any race.
 N/A means not available. **Source:** U.S. Census Bureau, American Community Survey (ACS) 2018 - 2022.
 *Population by Language Spoken at Home is available at the census tract summary level and up.