



EJScreen Community Report

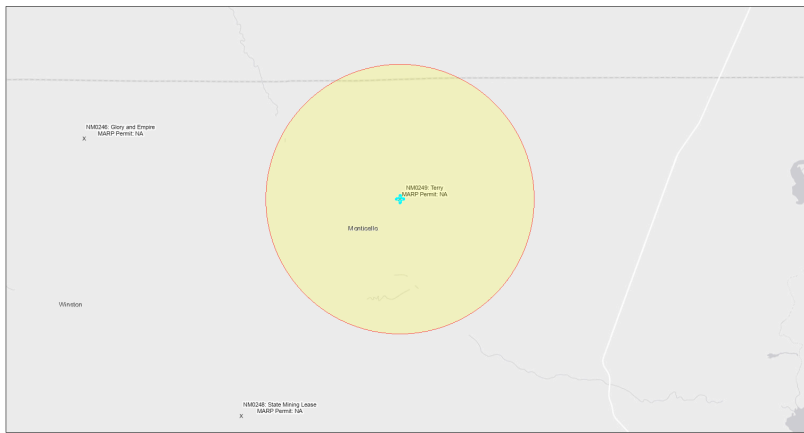
This report provides environmental and socioeconomic information for user-defined areas, and combines that data into environmental justice and supplemental indexes.

Terry NM0249

5 miles Ring Centered at 33.412409,-107.426515

Population: 13

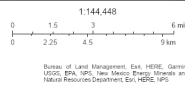
Area in square miles: 78.53



September 25, 2024

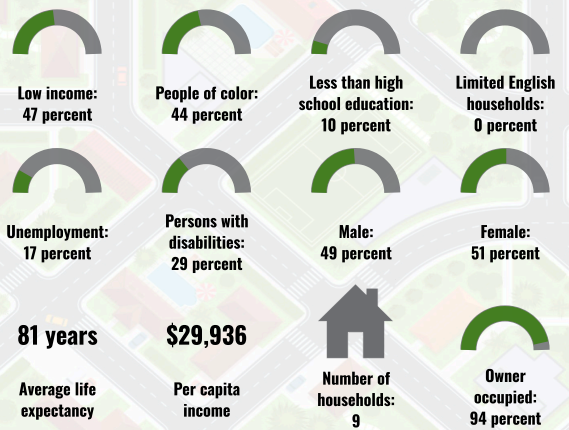
Terry NM0249

* Abandoned Uranium Mines

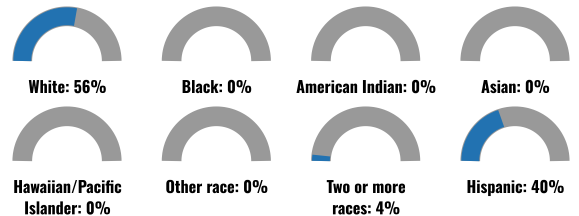


Bureau of Land Management, EPA, HHS, Census, USGS, BIA, IHS, New Mexico Energy, Storage and Natural Resources Department, EIS, HHS, IHS

COMMUNITY INFORMATION



BREAKDOWN BY RACE



BREAKDOWN BY AGE



LIMITED ENGLISH SPEAKING BREAKDOWN



LANGUAGES SPOKEN AT HOME

LANGUAGE	PERCENT
No language data available.	

Notes: Numbers may not sum to totals due to rounding. Hispanic population can be of any race. Source: U.S. Census Bureau, American Community Survey (ACS) 2018-2022. Life expectancy data comes from the Centers for Disease Control.

Report for 5 miles Ring Centered at 33.412409,-107.426515

Report produced September 25, 2024 using EJScreen Version 2.3

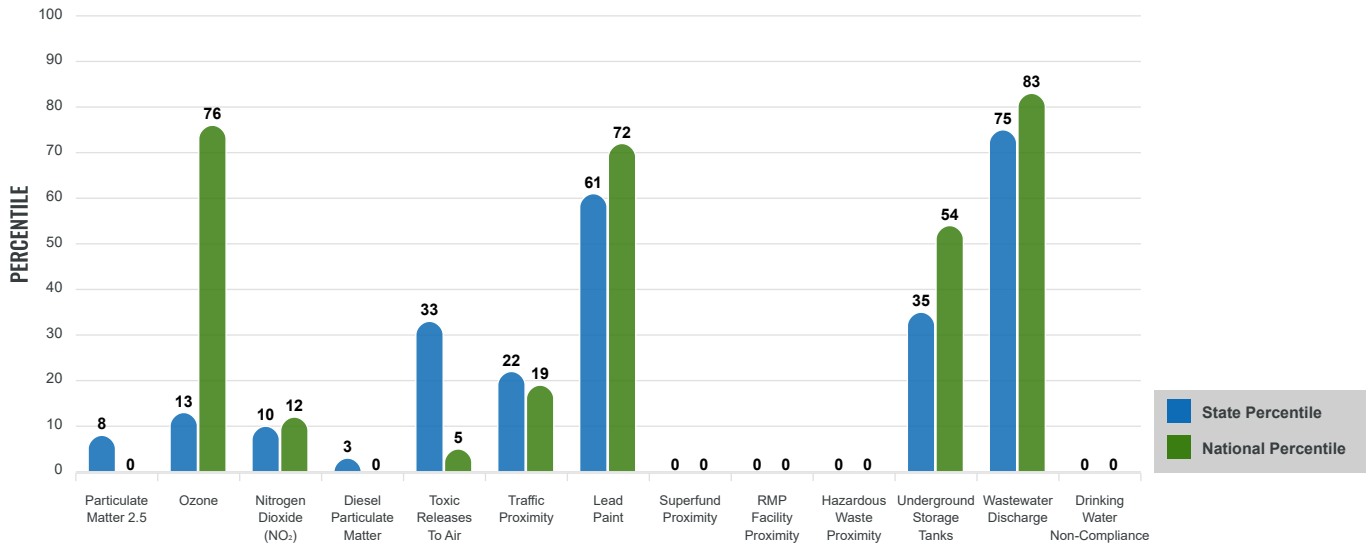
Environmental Justice & Supplemental Indexes

The environmental justice and supplemental indexes are a combination of environmental and socioeconomic information. There are thirteen EJ indexes and supplemental indexes in EJScreen reflecting the 13 environmental indicators. The indexes for a selected area are compared to those for all other locations in the state or nation. For more information and calculation details on the EJ and supplemental indexes, please visit the [EJScreen website](#).

EJ INDEXES

The EJ indexes help users screen for potential EJ concerns. To do this, the EJ index combines data on low income and people of color populations with a single environmental indicator.

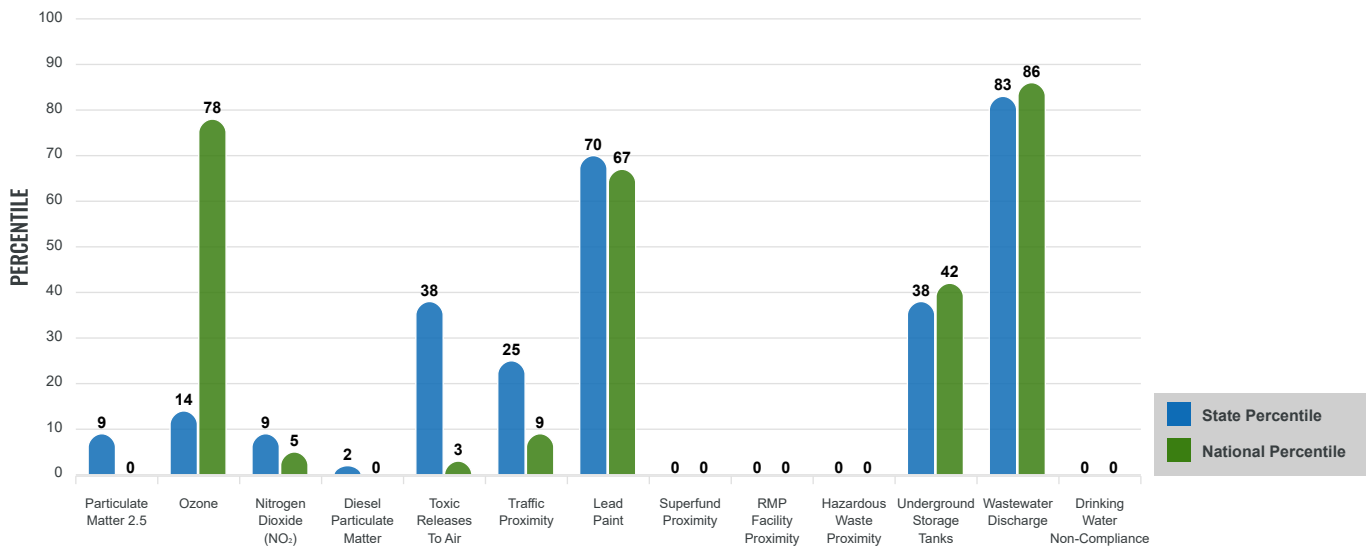
EJ INDEXES FOR THE SELECTED LOCATION



SUPPLEMENTAL INDEXES

The supplemental indexes offer a different perspective on community-level vulnerability. They combine data on percent low income, percent persons with disabilities, percent less than high school education, percent limited English speaking, and percent low life expectancy with a single environmental indicator.

SUPPLEMENTAL INDEXES FOR THE SELECTED LOCATION



Report for 5 miles Ring Centered at 33.412409,-107.426515
 Report produced September 25, 2024 using EJScreen Version 2.3

EJScreen Environmental and Socioeconomic Indicators Data

SELECTED VARIABLES	VALUE	STATE AVERAGE	PERCENTILE IN STATE	USA AVERAGE	PERCENTILE IN USA
ENVIRONMENTAL BURDEN INDICATORS					
Particulate Matter 2.5 (µg/m ³)	4.68	6.11	7	8.45	0
Ozone (ppb)	62	65.3	11	61.8	58
Nitrogen Dioxide (NO ₂) (ppbv)	2.7	8.1	8	7.8	4
Diesel Particulate Matter (µg/m ³)	0.0101	0.187	2	0.191	0
Toxic Releases to Air (toxicity-weighted concentration)	0.055	29	29	4,600	2
Traffic Proximity (daily traffic count/distance to road)	23,000	730,000	20	1,700,000	7
Lead Paint (% Pre-1960 Housing)	0.23	0.19	68	0.3	51
Superfund Proximity (site count/km distance)	0	0.34	0	0.39	0
RMP Facility Proximity (facility count/km distance)	0	0.2	0	0.57	0
Hazardous Waste Proximity (facility count/km distance)	0	1.2	0	3.5	0
Underground Storage Tanks (count/km ²)	0.00096	2.8	28	3.6	27
Wastewater Discharge (toxicity-weighted concentration/m distance)	1100	990000	77	700000	74
Drinking Water Non-Compliance (points)	0	5.6	0	2.2	0
SOCIOECONOMIC INDICATORS					
Demographic Index USA	1.8	N/A	N/A	1.34	72
Supplemental Demographic Index USA	2.05	N/A	N/A	1.64	75
Demographic Index State	1.95	2.16	42	N/A	N/A
Supplemental Demographic Index State	1.71	1.62	58	N/A	N/A
People of Color	44%	62%	24	40%	61
Low Income	47%	39%	63	30%	78
Unemployment Rate	17%	6%	91	6%	93
Limited English Speaking Households	0%	6%	0	5%	0
Less Than High School Education	10%	14%	48	11%	58
Under Age 5	8%	5%	77	5%	76
Over Age 64	36%	20%	90	18%	93

*Diesel particulate matter index is from the EPA's Air Toxics Data Update, which is the Agency's ongoing, comprehensive evaluation of air toxics in the United States. This effort aims to prioritize air toxics, emission sources, and locations of interest for further study. It is important to remember that the air toxics data presented here provide broad estimates of health risks over geographic areas of the country, not definitive risks to specific individuals or locations. More information on the Air Toxics Data Update can be found at: <https://www.epa.gov/haps/air-toxics-data-update>.

Sites reporting to EPA within defined area:

Superfund	0
Hazardous Waste, Treatment, Storage, and Disposal Facilities	0
Water Dischargers	3
Air Pollution	0
Brownfields	0
Toxic Release Inventory	0

Other community features within defined area:

Schools	0
Hospitals	0
Places of Worship	2

Other environmental data:

Air Non-attainment	No
Impaired Waters	No

Selected location contains American Indian Reservation Lands*	No
Selected location contains a "Justice40 (CEJST)" disadvantaged community	Yes
Selected location contains an EPA IRA disadvantaged community	Yes

Report for 5 miles Ring Centered at 33.412409,-107.426515
 Report produced September 25, 2024 using EJScreen Version 2.3

EJScreen Environmental and Socioeconomic Indicators Data

HEALTH INDICATORS

INDICATOR	VALUE	STATE AVERAGE	STATE PERCENTILE	US AVERAGE	US PERCENTILE
Low Life Expectancy	17%	19%	25	20%	26
Heart Disease	9.4	5.9	97	5.8	96
Asthma	10.5	11.2	31	10.3	59
Cancer	9	6.1	96	6.4	94
Persons with Disabilities	29.2%	17.1%	95	13.7%	98

CLIMATE INDICATORS

INDICATOR	VALUE	STATE AVERAGE	STATE PERCENTILE	US AVERAGE	US PERCENTILE
Flood Risk	17%	9%	85	12%	81
Wildfire Risk	49%	58%	38	14%	85

CRITICAL SERVICE GAPS

INDICATOR	VALUE	STATE AVERAGE	STATE PERCENTILE	US AVERAGE	US PERCENTILE
Broadband Internet	22%	20%	61	13%	80
Lack of Health Insurance	3%	10%	10	9%	18
Housing Burden	No	N/A	N/A	N/A	N/A
Transportation Access Burden	Yes	N/A	N/A	N/A	N/A
Food Desert	Yes	N/A	N/A	N/A	N/A

Report for 5 miles Ring Centered at 33.412409,-107.426515

Report produced September 25, 2024 using EJScreen Version 2.3

Location: User-specified point center at 33.412409, -107.426515
 Ring (buffer): 5-miles radius
 Description: Terry NM0249

Summary of ACS Estimates		2018 - 2022
Population		13
Population Density (per sq. mile)		0
People of Color Population		6
% People of Color Population		44%
Households		9
Housing Units		13
Housing Units Built Before 1950		3
Per Capita Income		29,936
Land Area (sq. miles) (Source: SF1)		34.74
% Land Area		99%
Water Area (sq. miles) (Source: SF1)		0.20
% Water Area		1%

	2018 - 2022 ACS Estimates	Percent	MOE (±)
Population by Race			
Total	13	100%	456
Population Reporting One Race	12	93%	649
White	11	82%	420
Black	0	0%	13
American Indian	0	0%	13
Asian	0	0%	13
Pacific Islander	0	0%	13
Some Other Race	1	10%	177
Population Reporting Two or More Races	1	7%	119
Total Hispanic Population	5	40%	404
Total Non-Hispanic Population	8		
White Alone	7	56%	265
Black Alone	0	0%	13
American Indian Alone	0	0%	13
Non-Hispanic Asian Alone	0	0%	13
Pacific Islander Alone	0	0%	13
Other Race Alone	0	0%	13
Two or More Races Alone	1	4%	89
Population by Sex			
Male	7	49%	210
Female	7	51%	296
Population by Age			
Age 0-4	1	8%	94
Age 0-17	2	18%	160
Age 18+	11	82%	352
Age 65+	5	36%	229

Data Note: Detail may not sum to totals due to rounding. Hispanic population can be of any race.

N/A means not available. **Source:** U.S. Census Bureau, American Community Survey (ACS) 2018 - 2022

Location: User-specified point center at 33.412409, -107.426515
 Ring (buffer): 5-miles radius
 Description: Terry NM0249

	2018 - 2022 ACS Estimates	Percent	MOE (±)
Population 25+ by Educational Attainment			
Total	11	100%	367
Less than 9th Grade	0	0%	37
9th - 12th Grade, No Diploma	1	10%	125
High School Graduate	4	39%	252
Some College, No Degree	3	28%	188
Associate Degree	1	10%	107
Bachelor's Degree or more	2	14%	131
Population Age 5+ Years by Ability to Speak English			
Total	12	100%	431
Speak only English	8	69%	334
Non-English at Home ¹⁺²⁺³⁺⁴	4	31%	292
¹ Speak English "very well"	4	31%	292
² Speak English "well"	0	0%	45
³ Speak English "not well"	0	0%	45
⁴ Speak English "not at all"	0	0%	45
³⁺⁴ Speak English "less than well"	0	0%	64
²⁺³⁺⁴ Speak English "less than very well"	0	0%	78
Limited English Speaking Households*			
Total	0	0%	26
Speak Spanish	0	0%	13
Speak Other Indo-European Languages	0	0%	13
Speak Asian-Pacific Island Languages	0	0%	13
Speak Other Languages	0	0%	13
Households by Household Income			
Household Income Base	9	100%	178
< \$15,000	1	16%	116
\$15,000 - \$25,000	2	23%	128
\$25,000 - \$50,000	2	21%	91
\$50,000 - \$75,000	1	8%	90
\$75,000 +	3	31%	135
Occupied Housing Units by Tenure			
Total	9	100%	178
Owner Occupied	8	94%	176
Renter Occupied	1	6%	69
Employed Population Age 16+ Years			
Total	11	100%	367
In Labor Force	3	31%	249
Civilian Unemployed in Labor Force	1	17%	118
Not In Labor Force	8	69%	284

Data Note: Detail may not sum to totals due to rounding. Hispanic population can be of anyrace.

N/A means not available. **Source:** U.S. Census Bureau, American Community Survey (ACS)

*Households in which no one 14 and over speaks English "very well" or speaks English only.

Location: User-specified point center at 33.412409, -107.426515

Ring (buffer): 5-miles radius

Description: Terry NM0249

	2018 - 2022 ACS Estimates	Percent	MOE (±)
Population by Language Spoken at Home*			
Total (persons age 5 and above)	N/A	N/A	N/A
English	N/A	N/A	N/A
Spanish	N/A	N/A	N/A
French, Haitian, or Cajun	N/A	N/A	N/A
German or other West Germanic	N/A	N/A	N/A
Russian, Polish, or Other Slavic	N/A	N/A	N/A
Other Indo-European	N/A	N/A	N/A
Korean	N/A	N/A	N/A
Chinese (including Mandarin, Cantonese)	N/A	N/A	N/A
Vietnamese	N/A	N/A	N/A
Tagalog (including Filipino)	N/A	N/A	N/A
Other Asian and Pacific Island	N/A	N/A	N/A
Arabic	N/A	N/A	N/A
Other and Unspecified	N/A	N/A	N/A
Total Non-English	N/A	N/A	N/A

Data Note: Detail may not sum to totals due to rounding. Hispanic population can be of any race.
 N/A means not available. **Source:** U.S. Census Bureau, American Community Survey (ACS) 2018 - 2022.
 *Population by Language Spoken at Home is available at the census tract summary level and up.