



EJScreen Community Report

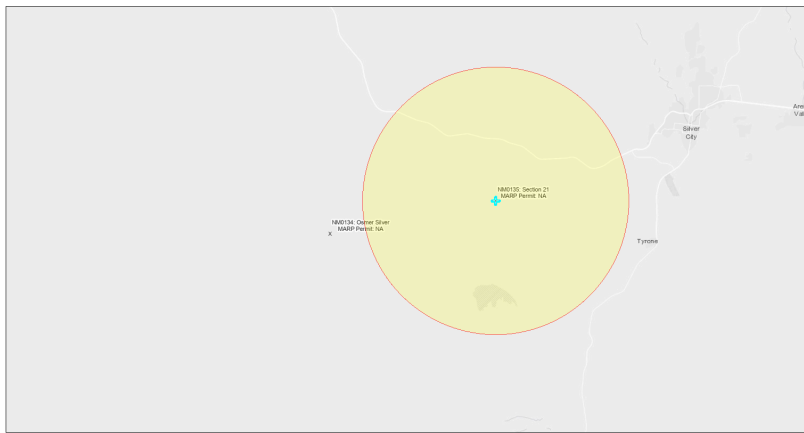
This report provides environmental and socioeconomic information for user-defined areas, and combines that data into environmental justice and supplemental indexes.

Section 21 NM0135

5 miles Ring Centered at 32.733005,-108.400538

Population: 277

Area in square miles: 78.53

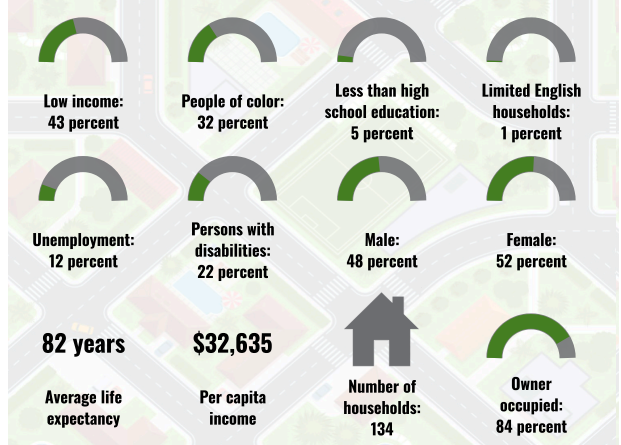


September 23, 2024

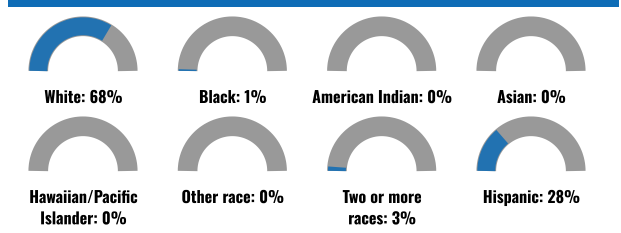
Section 21 NM0135
* Abandoned Uranium Mines

1:144,448
0 1.5 3 4.5 6 mi
0 2.25 4.5 9 km
Bureau of Land Management, EPA, HHS, Census, USGS, EPA, USF, New Mexico Energy, Storage and Natural Resources Department, EPA, HHS, USF

COMMUNITY INFORMATION



BREAKDOWN BY RACE



BREAKDOWN BY AGE



LIMITED ENGLISH SPEAKING BREAKDOWN



LANGUAGES SPOKEN AT HOME

LANGUAGE	PERCENT
No language data available.	

Notes: Numbers may not sum to totals due to rounding. Hispanic population can be of any race. Source: U.S. Census Bureau, American Community Survey (ACS) 2018-2022. Life expectancy data comes from the Centers for Disease Control.

Report for 5 miles Ring Centered at 32.733005,-108.400538
Report produced September 23, 2024 using EJScreen Version 2.3

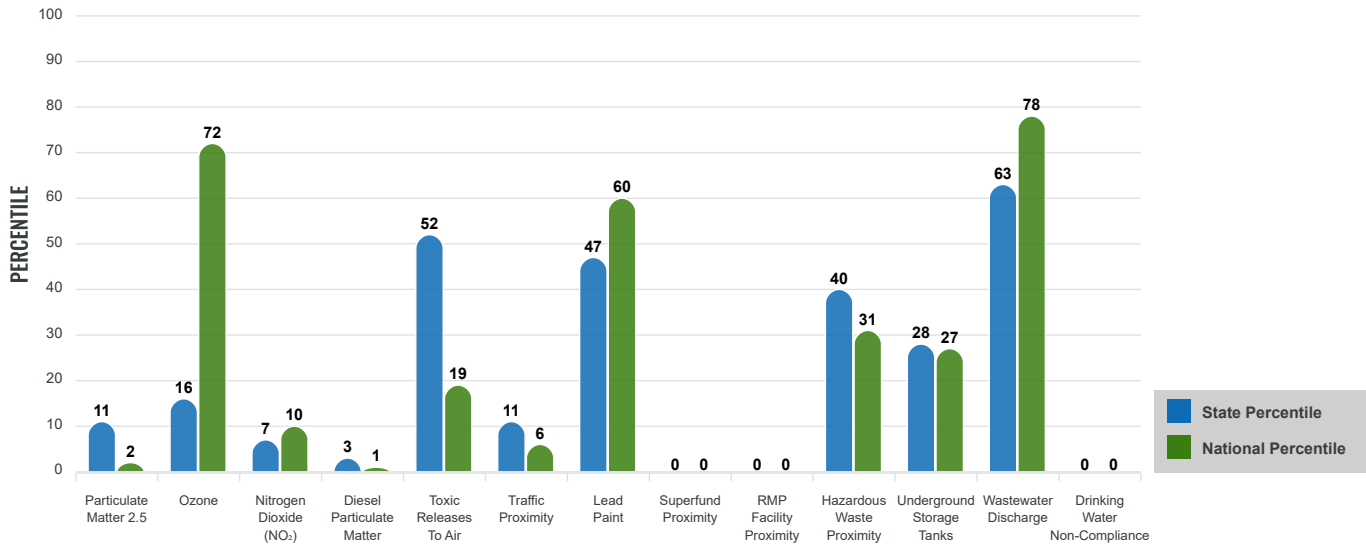
Environmental Justice & Supplemental Indexes

The environmental justice and supplemental indexes are a combination of environmental and socioeconomic information. There are thirteen EJ indexes and supplemental indexes in EJScreen reflecting the 13 environmental indicators. The indexes for a selected area are compared to those for all other locations in the state or nation. For more information and calculation details on the EJ and supplemental indexes, please visit the [EJScreen website](#).

EJ INDEXES

The EJ indexes help users screen for potential EJ concerns. To do this, the EJ index combines data on low income and people of color populations with a single environmental indicator.

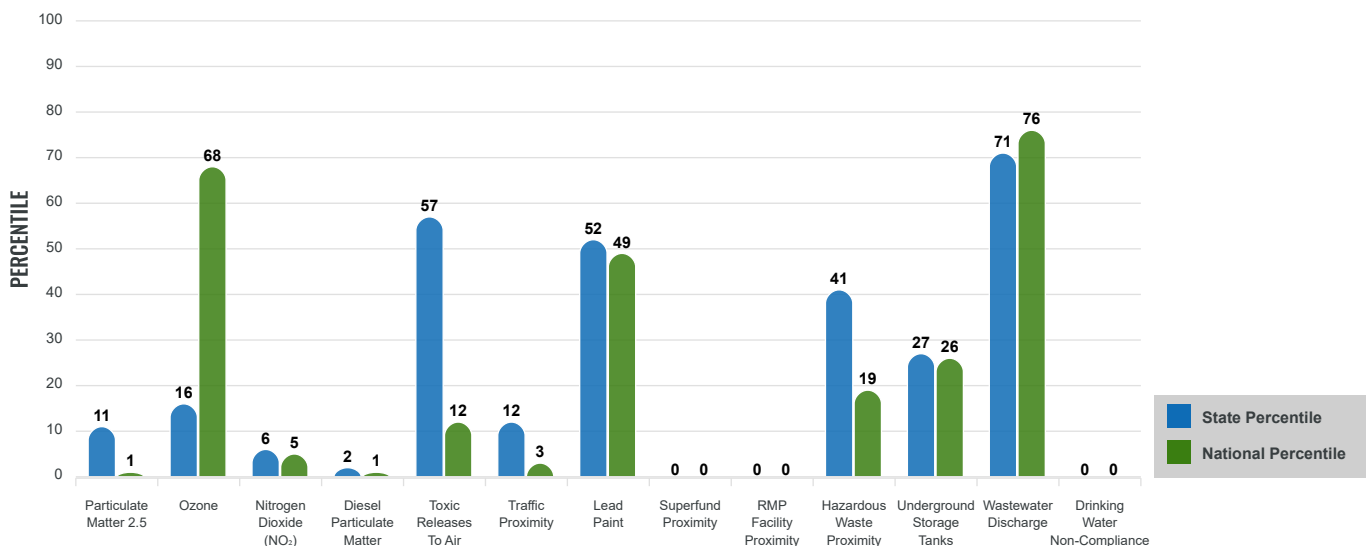
EJ INDEXES FOR THE SELECTED LOCATION



SUPPLEMENTAL INDEXES

The supplemental indexes offer a different perspective on community-level vulnerability. They combine data on percent low income, percent persons with disabilities, percent less than high school education, percent limited English speaking, and percent low life expectancy with a single environmental indicator.

SUPPLEMENTAL INDEXES FOR THE SELECTED LOCATION



Report for 5 miles Ring Centered at 32.733005,-108.400538

Report produced September 23, 2024 using EJScreen Version 2.3

EJScreen Environmental and Socioeconomic Indicators Data

SELECTED VARIABLES	VALUE	STATE AVERAGE	PERCENTILE IN STATE	USA AVERAGE	PERCENTILE IN USA
ENVIRONMENTAL BURDEN INDICATORS					
Particulate Matter 2.5 (µg/m ³)	4.82	6.11	11	8.45	0
Ozone (ppb)	62.4	65.3	13	61.8	59
Nitrogen Dioxide (NO ₂) (ppbv)	2.5	8.1	7	7.8	4
Diesel Particulate Matter (µg/m ³)	0.0111	0.187	3	0.191	0
Toxic Releases to Air (toxicity-weighted concentration)	22	29	57	4,600	12
Traffic Proximity (daily traffic count/distance to road)	5,400	730,000	13	1,700,000	3
Lead Paint (% Pre-1960 Housing)	0.17	0.19	62	0.3	45
Superfund Proximity (site count/km distance)	0	0.34	0	0.39	0
RMP Facility Proximity (facility count/km distance)	0	0.2	0	0.57	0
Hazardous Waste Proximity (facility count/km distance)	0.083	1.2	37	3.5	16
Underground Storage Tanks (count/km ²)	0.0058	2.8	30	3.6	27
Wastewater Discharge (toxicity-weighted concentration/m distance)	1400	990000	79	700000	76
Drinking Water Non-Compliance (points)	0	5.6	0	2.2	0
SOCIOECONOMIC INDICATORS					
Demographic Index USA	1.51	N/A	N/A	1.34	63
Supplemental Demographic Index USA	1.65	N/A	N/A	1.64	56
Demographic Index State	1.61	2.16	28	N/A	N/A
Supplemental Demographic Index State	1.34	1.62	37	N/A	N/A
People of Color	32%	62%	12	40%	50
Low Income	43%	39%	57	30%	73
Unemployment Rate	13%	6%	84	6%	88
Limited English Speaking Households	1%	6%	44	5%	58
Less Than High School Education	5%	14%	30	11%	35
Under Age 5	4%	5%	51	5%	45
Over Age 64	35%	20%	88	18%	92

*Diesel particulate matter index is from the EPA's Air Toxics Data Update, which is the Agency's ongoing, comprehensive evaluation of air toxics in the United States. This effort aims to prioritize air toxics, emission sources, and locations of interest for further study. It is important to remember that the air toxics data presented here provide broad estimates of health risks over geographic areas of the country, not definitive risks to specific individuals or locations. More information on the Air Toxics Data Update can be found at: <https://www.epa.gov/haps/air-toxics-data-update>.

Sites reporting to EPA within defined area:

Superfund	0
Hazardous Waste, Treatment, Storage, and Disposal Facilities	0
Water Dischargers	2
Air Pollution	0
Brownfields	0
Toxic Release Inventory	0

Other community features within defined area:

Schools	0
Hospitals	0
Places of Worship	0

Other environmental data:

Air Non-attainment	No
Impaired Waters	Yes

Selected location contains American Indian Reservation Lands*	No
Selected location contains a "Justice40 (CEJST)" disadvantaged community	Yes
Selected location contains an EPA IRA disadvantaged community	Yes

Report for 5 miles Ring Centered at 32.733005,-108.400538
 Report produced September 23, 2024 using EJScreen Version 2.3

EJScreen Environmental and Socioeconomic Indicators Data

HEALTH INDICATORS

INDICATOR	VALUE	STATE AVERAGE	STATE PERCENTILE	US AVERAGE	US PERCENTILE
Low Life Expectancy	16%	19%	16	20%	16
Heart Disease	8.1	5.9	92	5.8	89
Asthma	10.2	11.2	19	10.3	52
Cancer	9.3	6.1	97	6.4	95
Persons with Disabilities	22.1%	17.1%	79	13.7%	90

CLIMATE INDICATORS

INDICATOR	VALUE	STATE AVERAGE	STATE PERCENTILE	US AVERAGE	US PERCENTILE
Flood Risk	15%	9%	82	12%	79
Wildfire Risk	90%	58%	54	14%	90

CRITICAL SERVICE GAPS

INDICATOR	VALUE	STATE AVERAGE	STATE PERCENTILE	US AVERAGE	US PERCENTILE
Broadband Internet	15%	20%	47	13%	68
Lack of Health Insurance	8%	10%	52	9%	60
Housing Burden	No	N/A	N/A	N/A	N/A
Transportation Access Burden	Yes	N/A	N/A	N/A	N/A
Food Desert	Yes	N/A	N/A	N/A	N/A

Report for 5 miles Ring Centered at 32.733005,-108.400538

Report produced September 23, 2024 using EJScreen Version 2.3

Location: User-specified point center at 32.733005, -108.400538
 Ring (buffer): 5-miles radius
 Description: Section 21 NM0135

Summary of ACS Estimates		2018 - 2022
Population		277
Population Density (per sq. mile)		4
People of Color Population		88
% People of Color Population		32%
Households		134
Housing Units		181
Housing Units Built Before 1950		23
Per Capita Income		32,635
Land Area (sq. miles) (Source: SF1)		69.77
% Land Area		100%
Water Area (sq. miles) (Source: SF1)		0.21
% Water Area		0%

	2018 - 2022 ACS Estimates	Percent	MOE (±)
Population by Race			
Total	277	100%	383
Population Reporting One Race	232	84%	468
White	228	82%	323
Black	2	1%	59
American Indian	1	0%	47
Asian	0	0%	13
Pacific Islander	0	0%	13
Some Other Race	1	0%	13
Population Reporting Two or More Races	45	16%	213
Total Hispanic Population	78	28%	294
Total Non-Hispanic Population	199		
White Alone	189	68%	286
Black Alone	2	1%	59
American Indian Alone	0	0%	47
Non-Hispanic Asian Alone	0	0%	13
Pacific Islander Alone	0	0%	13
Other Race Alone	0	0%	13
Two or More Races Alone	8	3%	62
Population by Sex			
Male	133	48%	232
Female	144	52%	237
Population by Age			
Age 0-4	11	4%	120
Age 0-17	37	13%	161
Age 18+	240	87%	284
Age 65+	96	35%	188

Data Note: Detail may not sum to totals due to rounding. Hispanic population can be of any race.

N/A means not available. **Source:** U.S. Census Bureau, American Community Survey (ACS) 2018 - 2022

Location: User-specified point center at 32.733005, -108.400538

Ring (buffer): 5-miles radius

Description: Section 21 NM0135

	2018 - 2022 ACS Estimates	Percent	MOE (±)
Population 25+ by Educational Attainment			
Total	225	100%	330
Less than 9th Grade	3	2%	58
9th - 12th Grade, No Diploma	7	3%	122
High School Graduate	54	24%	196
Some College, No Degree	60	27%	141
Associate Degree	18	8%	61
Bachelor's Degree or more	82	37%	139
Population Age 5+ Years by Ability to Speak English			
Total	266	100%	340
Speak only English	219	82%	296
Non-English at Home ¹⁺²⁺³⁺⁴	47	18%	174
¹ Speak English "very well"	42	16%	174
² Speak English "well"	3	1%	55
³ Speak English "not well"	2	1%	54
⁴ Speak English "not at all"	0	0%	45
³⁺⁴ Speak English "less than well"	2	1%	71
²⁺³⁺⁴ Speak English "less than very well"	5	2%	84
Limited English Speaking Households*			
Total	1	100%	39
Speak Spanish	1	100%	32
Speak Other Indo-European Languages	0	0%	13
Speak Asian-Pacific Island Languages	0	0%	13
Speak Other Languages	0	0%	13
Households by Household Income			
Household Income Base	134	100%	151
< \$15,000	30	22%	93
\$15,000 - \$25,000	14	10%	55
\$25,000 - \$50,000	32	24%	94
\$50,000 - \$75,000	21	16%	103
\$75,000 +	37	28%	125
Occupied Housing Units by Tenure			
Total	134	100%	151
Owner Occupied	113	84%	148
Renter Occupied	21	16%	83
Employed Population Age 16+ Years			
Total	241	100%	330
In Labor Force	84	35%	211
Civilian Unemployed in Labor Force	10	12%	61
Not In Labor Force	156	65%	240

Data Note: Detail may not sum to totals due to rounding. Hispanic population can be of anyrace.

N/A means not available. **Source:** U.S. Census Bureau, American Community Survey (ACS)

*Households in which no one 14 and over speaks English "very well" or speaks English only.

Location: User-specified point center at 32.733005, -108.400538

Ring (buffer): 5-miles radius

Description: Section 21 NM0135

	2018 - 2022 ACS Estimates	Percent	MOE (±)
Population by Language Spoken at Home*			
Total (persons age 5 and above)	N/A	N/A	N/A
English	N/A	N/A	N/A
Spanish	N/A	N/A	N/A
French, Haitian, or Cajun	N/A	N/A	N/A
German or other West Germanic	N/A	N/A	N/A
Russian, Polish, or Other Slavic	N/A	N/A	N/A
Other Indo-European	N/A	N/A	N/A
Korean	N/A	N/A	N/A
Chinese (including Mandarin, Cantonese)	N/A	N/A	N/A
Vietnamese	N/A	N/A	N/A
Tagalog (including Filipino)	N/A	N/A	N/A
Other Asian and Pacific Island	N/A	N/A	N/A
Arabic	N/A	N/A	N/A
Other and Unspecified	N/A	N/A	N/A
Total Non-English	N/A	N/A	N/A

Data Note: Detail may not sum to totals due to rounding. Hispanic population can be of any race.
 N/A means not available. **Source:** U.S. Census Bureau, American Community Survey (ACS) 2018 - 2022.
 *Population by Language Spoken at Home is available at the census tract summary level and up.