



EJScreen Community Report

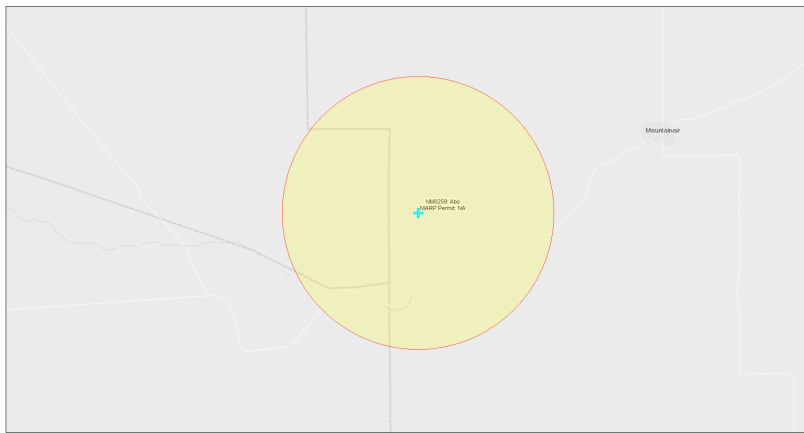
This report provides environmental and socioeconomic information for user-defined areas, and combines that data into environmental justice and supplemental indexes.

Abo NM0259

5 miles Ring Centered at 34.476696,-106.398399

Population: 122

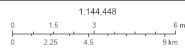
Area in square miles: 78.53



September 25, 2024

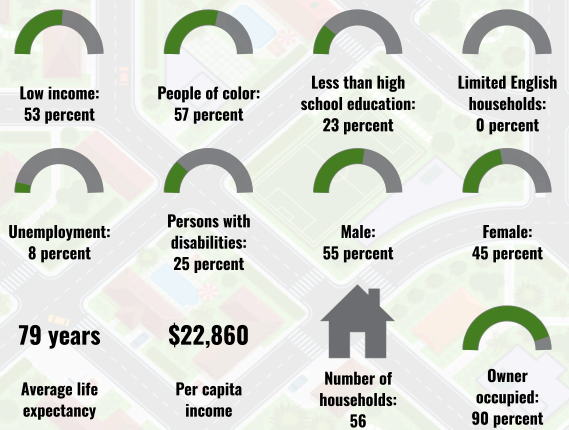
Abo NM0259

* Abandoned Uranium Mines

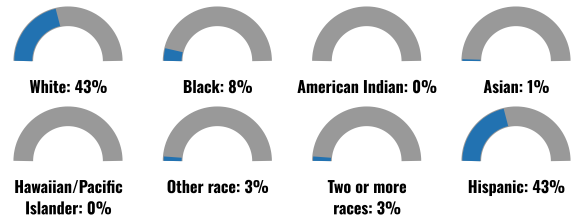


Map: Mexico Energy, Minerals and Natural Resources Department; Bureau of Land Management; Texas Parks & Wildlife; Esri; HERE; DeLorme; USGS; EPA; NOAA; Esri; HERE; DeLorme

COMMUNITY INFORMATION



BREAKDOWN BY RACE



BREAKDOWN BY AGE



LIMITED ENGLISH SPEAKING BREAKDOWN



Notes: Numbers may not sum to totals due to rounding. Hispanic population can be of any race. Source: U.S. Census Bureau, American Community Survey (ACS) 2018-2022. Life expectancy data comes from the Centers for Disease Control.

LANGUAGES SPOKEN AT HOME

LANGUAGE	PERCENT
No language data available.	

Report for 5 miles Ring Centered at 34.476696,-106.398399

Report produced September 25, 2024 using EJScreen Version 2.3

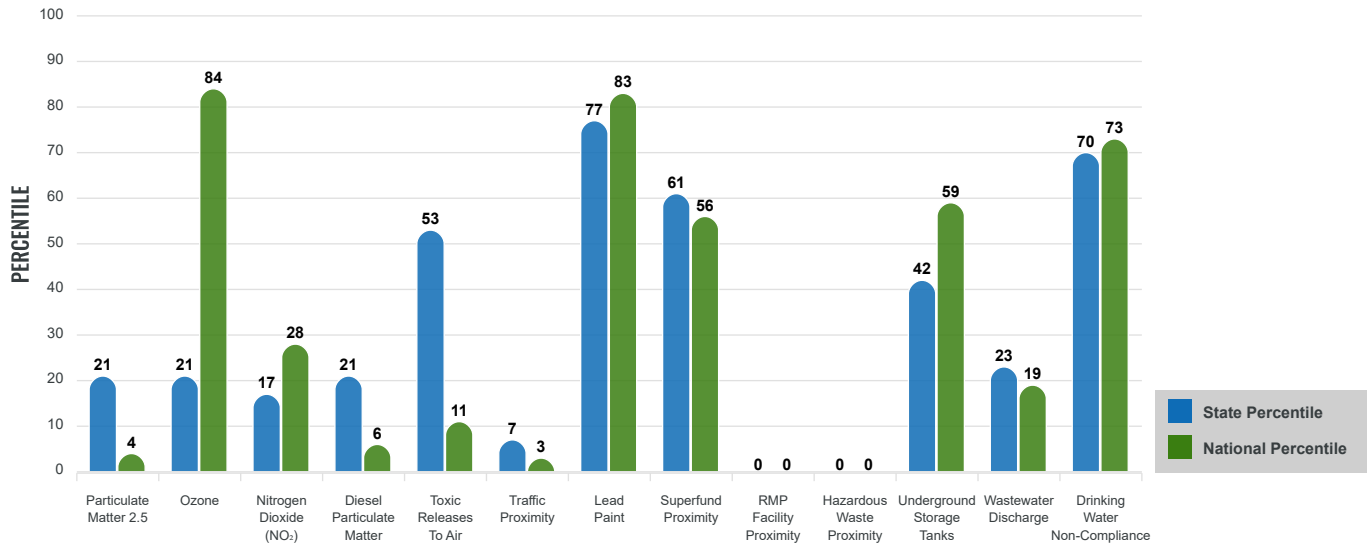
Environmental Justice & Supplemental Indexes

The environmental justice and supplemental indexes are a combination of environmental and socioeconomic information. There are thirteen EJ indexes and supplemental indexes in EJScreen reflecting the 13 environmental indicators. The indexes for a selected area are compared to those for all other locations in the state or nation. For more information and calculation details on the EJ and supplemental indexes, please visit the [EJScreen website](#).

EJ INDEXES

The EJ indexes help users screen for potential EJ concerns. To do this, the EJ index combines data on low income and people of color populations with a single environmental indicator.

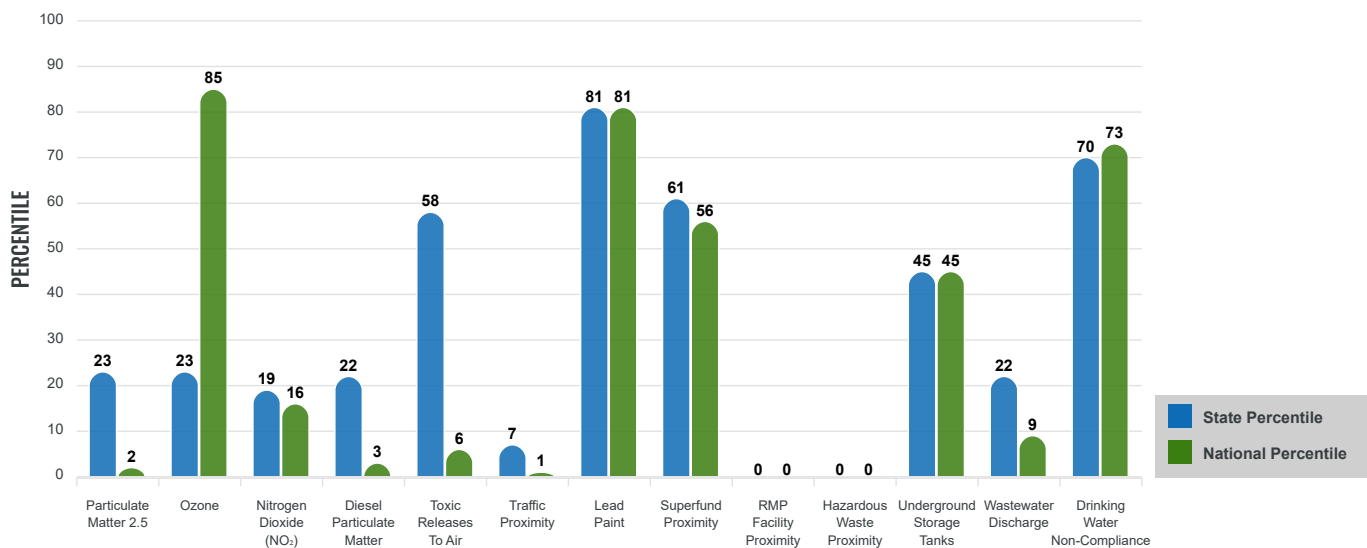
EJ INDEXES FOR THE SELECTED LOCATION



SUPPLEMENTAL INDEXES

The supplemental indexes offer a different perspective on community-level vulnerability. They combine data on percent low income, percent persons with disabilities, percent less than high school education, percent limited English speaking, and percent low life expectancy with a single environmental indicator.

SUPPLEMENTAL INDEXES FOR THE SELECTED LOCATION



Report for 5 miles Ring Centered at 34.476696,-106.398399

Report produced September 25, 2024 using EJScreen Version 2.3

EJScreen Environmental and Socioeconomic Indicators Data

SELECTED VARIABLES	VALUE	STATE AVERAGE	PERCENTILE IN STATE	USA AVERAGE	PERCENTILE IN USA
ENVIRONMENTAL BURDEN INDICATORS					
Particulate Matter 2.5 (µg/m ³)	4.99	6.11	16	8.45	1
Ozone (ppb)	62.8	65.3	17	61.8	62
Nitrogen Dioxide (NO ₂) (ppbv)	3.4	8.1	13	7.8	9
Diesel Particulate Matter (µg/m ³)	0.0316	0.187	15	0.191	2
Toxic Releases to Air (toxicity-weighted concentration)	0.47	29	41	4,600	3
Traffic Proximity (daily traffic count/distance to road)	2,300	730,000	11	1,700,000	2
Lead Paint (% Pre-1960 Housing)	0.34	0.19	76	0.3	62
Superfund Proximity (site count/km distance)	0.0068	0.34	61	0.39	56
RMP Facility Proximity (facility count/km distance)	0	0.2	0	0.57	0
Hazardous Waste Proximity (facility count/km distance)	0	1.2	0	3.5	0
Underground Storage Tanks (count/km ²)	0.0082	2.8	31	3.6	27
Wastewater Discharge (toxicity-weighted concentration/m distance)	170	990000	59	700000	60
Drinking Water Non-Compliance (points)	0.061	5.6	71	2.2	74
SOCIOECONOMIC INDICATORS					
Demographic Index USA	2.16	N/A	N/A	1.34	81
Supplemental Demographic Index USA	2.25	N/A	N/A	1.64	82
Demographic Index State	2.37	2.16	58	N/A	N/A
Supplemental Demographic Index State	1.91	1.62	68	N/A	N/A
People of Color	57%	62%	40	40%	70
Low Income	53%	39%	72	30%	84
Unemployment Rate	8%	6%	67	6%	73
Limited English Speaking Households	0%	6%	42	5%	56
Less Than High School Education	23%	14%	79	11%	86
Under Age 5	1%	5%	25	5%	18
Over Age 64	38%	20%	91	18%	94

*Diesel particulate matter index is from the EPA's Air Toxics Data Update, which is the Agency's ongoing, comprehensive evaluation of air toxics in the United States. This effort aims to prioritize air toxics, emission sources, and locations of interest for further study. It is important to remember that the air toxics data presented here provide broad estimates of health risks over geographic areas of the country, not definitive risks to specific individuals or locations. More information on the Air Toxics Data Update can be found at: <https://www.epa.gov/haps/air-toxics-data-update>.

Sites reporting to EPA within defined area:

Superfund	0
Hazardous Waste, Treatment, Storage, and Disposal Facilities	0
Water Dischargers	2
Air Pollution	0
Brownfields	0
Toxic Release Inventory	0

Other community features within defined area:

Schools	0
Hospitals	0
Places of Worship	0

Other environmental data:

Air Non-attainment	No
Impaired Waters	Yes

Selected location contains American Indian Reservation Lands*	No
Selected location contains a "Justice40 (CEJST)" disadvantaged community	Yes
Selected location contains an EPA IRA disadvantaged community	Yes

Report for 5 miles Ring Centered at 34.476696,-106.398399
 Report produced September 25, 2024 using EJScreen Version 2.3

EJScreen Environmental and Socioeconomic Indicators Data

HEALTH INDICATORS

INDICATOR	VALUE	STATE AVERAGE	STATE PERCENTILE	US AVERAGE	US PERCENTILE
Low Life Expectancy	18%	19%	31	20%	35
Heart Disease	8.2	5.9	92	5.8	90
Asthma	10.4	11.2	30	10.3	58
Cancer	7.9	6.1	86	6.4	80
Persons with Disabilities	24.8%	17.1%	88	13.7%	94

CLIMATE INDICATORS

INDICATOR	VALUE	STATE AVERAGE	STATE PERCENTILE	US AVERAGE	US PERCENTILE
Flood Risk	8%	9%	59	12%	56
Wildfire Risk	97%	58%	67	14%	93

CRITICAL SERVICE GAPS

INDICATOR	VALUE	STATE AVERAGE	STATE PERCENTILE	US AVERAGE	US PERCENTILE
Broadband Internet	30%	20%	75	13%	90
Lack of Health Insurance	9%	10%	57	9%	64
Housing Burden	No	N/A	N/A	N/A	N/A
Transportation Access Burden	Yes	N/A	N/A	N/A	N/A
Food Desert	Yes	N/A	N/A	N/A	N/A

Report for 5 miles Ring Centered at 34.476696,-106.398399

Report produced September 25, 2024 using EJScreen Version 2.3

Location: User-specified point center at 34.476696, -106.398399
 Ring (buffer): 5-miles radius
 Description: Abo NM0259

Summary of ACS Estimates		2018 - 2022
Population		122
Population Density (per sq. mile)		2
People of Color Population		70
% People of Color Population		57%
Households		56
Housing Units		76
Housing Units Built Before 1950		20
Per Capita Income		22,860
Land Area (sq. miles) (Source: SF1)		61.56
% Land Area		100%
Water Area (sq. miles) (Source: SF1)		0.03
% Water Area		0%

	2018 - 2022 ACS Estimates	Percent	MOE (±)
Population by Race			
Total	122	100%	630
Population Reporting One Race	102	83%	942
White	75	62%	600
Black	15	13%	165
American Indian	0	0%	13
Asian	1	1%	43
Pacific Islander	0	0%	13
Some Other Race	10	8%	108
Population Reporting Two or More Races	20	17%	358
Total Hispanic Population	53	43%	563
Total Non-Hispanic Population	70		
White Alone	53	43%	274
Black Alone	9	8%	76
American Indian Alone	0	0%	13
Non-Hispanic Asian Alone	1	1%	43
Pacific Islander Alone	0	0%	13
Other Race Alone	3	3%	68
Two or More Races Alone	3	3%	50
Population by Sex			
Male	67	55%	375
Female	56	45%	347
Population by Age			
Age 0-4	2	1%	104
Age 0-17	26	21%	240
Age 18+	97	79%	424
Age 65+	46	38%	188

Data Note: Detail may not sum to totals due to rounding. Hispanic population can be of any race.

N/A means not available. **Source:** U.S. Census Bureau, American Community Survey (ACS) 2018 - 2022

Location: User-specified point center at 34.476696, -106.398399
 Ring (buffer): 5-miles radius
 Description: Abo NM0259

	2018 - 2022 ACS Estimates	Percent	MOE (±)
Population 25+ by Educational Attainment			
Total	86	100%	424
Less than 9th Grade	12	13%	111
9th - 12th Grade, No Diploma	9	10%	115
High School Graduate	25	29%	362
Some College, No Degree	17	19%	89
Associate Degree	1	1%	62
Bachelor's Degree or more	24	28%	128
Population Age 5+ Years by Ability to Speak English			
Total	121	100%	584
Speak only English	93	77%	348
Non-English at Home ¹⁺²⁺³⁺⁴	28	23%	393
¹ Speak English "very well"	23	19%	325
² Speak English "well"	3	3%	224
³ Speak English "not well"	2	2%	72
⁴ Speak English "not at all"	0	0%	82
³⁺⁴ Speak English "less than well"	2	2%	94
²⁺³⁺⁴ Speak English "less than very well"	5	4%	236
Limited English Speaking Households*			
Total	0	100%	62
Speak Spanish	0	100%	58
Speak Other Indo-European Languages	0	0%	13
Speak Asian-Pacific Island Languages	0	0%	24
Speak Other Languages	0	0%	13
Households by Household Income			
Household Income Base	56	100%	171
< \$15,000	3	5%	89
\$15,000 - \$25,000	8	14%	117
\$25,000 - \$50,000	15	26%	102
\$50,000 - \$75,000	13	22%	73
\$75,000 +	18	33%	112
Occupied Housing Units by Tenure			
Total	56	100%	171
Owner Occupied	51	90%	170
Renter Occupied	5	10%	67
Employed Population Age 16+ Years			
Total	101	100%	452
In Labor Force	43	43%	198
Civilian Unemployed in Labor Force	3	8%	51
Not In Labor Force	58	57%	437

Data Note: Detail may not sum to totals due to rounding. Hispanic population can be of anyrace.

N/A means not available. **Source:** U.S. Census Bureau, American Community Survey (ACS)

*Households in which no one 14 and over speaks English "very well" or speaks English only.

Location: User-specified point center at 34.476696, -106.398399
 Ring (buffer): 5-miles radius
 Description: Abo NM0259

	2018 - 2022 ACS Estimates	Percent	MOE (±)
Population by Language Spoken at Home*			
Total (persons age 5 and above)	N/A	N/A	N/A
English	N/A	N/A	N/A
Spanish	N/A	N/A	N/A
French, Haitian, or Cajun	N/A	N/A	N/A
German or other West Germanic	N/A	N/A	N/A
Russian, Polish, or Other Slavic	N/A	N/A	N/A
Other Indo-European	N/A	N/A	N/A
Korean	N/A	N/A	N/A
Chinese (including Mandarin, Cantonese)	N/A	N/A	N/A
Vietnamese	N/A	N/A	N/A
Tagalog (including Filipino)	N/A	N/A	N/A
Other Asian and Pacific Island	N/A	N/A	N/A
Arabic	N/A	N/A	N/A
Other and Unspecified	N/A	N/A	N/A
Total Non-English	N/A	N/A	N/A

Data Note: Detail may not sum to totals due to rounding. Hispanic population can be of any race.
 N/A means not available. **Source:** U.S. Census Bureau, American Community Survey (ACS) 2018 - 2022.
 *Population by Language Spoken at Home is available at the census tract summary level and up.