

ABANDONED OR INACTIVE URANIUM

MINES IN NEW MEXICO

A report of investigation carried out between August 1979 and May 1980 under contract with the New Mexico Energy and Minerals Department.

by

Orin J. Anderson

New Mexico Bureau of Mines and  
Mineral Resources  
Open-File Report 148

## INTRODUCTION

During the course of this investigation approximately 200 uranium mine sites were visited. Although these sites are distributed throughout 20 counties the majority are in McKinley, San Juan, and Valencia Counties, along the western and southern margin of the San Juan Basin. Other counties with an appreciable number of sites are Grant, Rio Arriba, Sandoval, Sierra, and Socorro.

Field work commenced in August, 1979 and extended although not continuously, into May, 1980. Information obtained during the on-site visits included location, type and size of mine, condition of mine, host formation, dimensions of remaining structures, proximity to residences or villages, water quality data, and radiation levels, although a gamma ray scintillometer was not obtained for the project until October 20, 1979. An effort was made to contact landowners whenever and wherever possible, however, no systematic attempt was made to determine land and mineral ownership during this phase of the investigation.

Mine operation data has been included where available. This consists of information on ore grades, production history mineralogy, and mine operator. Old publications of the U.S. AEC and the State Mine Inspectors office were helpful in this area.

The mine reports are arranged alphabetically by county with each county having its own index. A NM- or AZ-mine identification number is given with each mine name in the index. It is an AML numbering system devised by Don Baker, Jr. The first part of this

identification number is based on a U.S. Soil Conservation Service numbering system of 15' quadrangles beginning with 1 in the northwest corner of the state to 24 in the northeast corner, then returning to the western border to start a new tier. The second part refers to a 7½' quad within the 15' quad; these are numbered counterclockwise from 1 in the NE quadrant to 4 in the SE. The last part of the number refers to a particular mine within the 7½' quad. An AZ- prefix indicates the 15' quadrangle is an Arizona quad that overlaps the New Mexico state boundary.

Acknowledgments - The writer wishes to thank the following people for their valuable assistance in the field: Lars (Skip) Skotte, Richard Chamberlin, JoAnne Osburn, Mary Ann Anderson, and Cheryl Kyllonen.

A special thanks is extended to Mr. William Chenoweth of the U.S. Department of Energy, both for his time in the field as well as the claim maps and A.E.C. mine production records he provided. Mr. John Blagbrough provided helpful information about the Chuska district. The editorial assistance of Wyatt Brewster and Lars (Skip) Skotte is gratefully acknowledged.

The help and cooperation of the Navajo Tribe Office in Window Rock, Arizona permitted a statewide investigation to be completed; a note of thanks goes to Mr. R. Zaman and Mr. William Armstrong of that office.

Quad: Grants 7½'

1. NM-173-1-1 Page 58  
Anaconda F-33 (F-33)
2. NM-173-1-2 Page 66  
Tom 13 (Tom)
3. NM-173-1-3 Page 68  
Lone Pine 3 (Lone Pine)
4. NM-173-1-4 Page 74  
Cedar 1 (Yucca) (Falcon?)

Quad: Mesa Gigante 7½'

1. NM-176-3-1 Page 78  
Chavez (Canoncito)

Quad: Moquino 7½'

1. NM-175-1-1 Page 80  
Woodrow (Woodrow Breccia Pipe)

Quad: San Mateo 7½'

1. NM-150-3-1 Found under McKinley Co; Quad: San Mateo  
Rialto (Chill Wills)
2. NM-150-3-2 Page 83  
San Mateo

Quad: South Butte 7½'

1. NM-199-2-1 Page 92  
Crackpot Mine

Date visited 3/21/80

Mine name(s) Cedar 1 (Yucca) (Falcon?) County Valencia

Section SE $\frac{1}{4}$  20 Twنش. 11 N R. 9 W

Quadrangle sheet Grants 7 $\frac{1}{2}$ '

Mining district Grants

Elevation 6,580'

Nearest city and/or dwellings Grants is 1 $\frac{1}{2}$  mi. to the southwest

The Cedar 1 deposit is located in the SE $\frac{1}{4}$  of sec. 20, approximately 1 mile northeast of the trailer park at the east edge of Grants. The deposit was mined from an open pit which is located several hundred feet north, north east of an abandoned Todilto limestone aggregate pit which is presently being closed and regraded by Benny Griegos Trucking, of Grants.

The open pit measures 300' N-S, by 200' E-W, and is 25' deep at maximum (see photo a); pit entrances are located at the northwest and south ends. The deposit is associated with a series of east trending intraformational folds in Todilto limestone (see photos b & c). Scintillometer response in the areas of the exposed folds was 700 cps, or 10 x background. Yellow uranium vanadates are present, but sparingly.

The main waste pile lies immediately west of the main pit (photo a), however, mine waste piles lie to the north and east as well; some ore may have been stockpiled in the north and east areas as scintillometer responses were stronger there.

Linear prospecting trenches extend eastward toward the sec. 21 line (see photos d & e), but no prospecting or mine workings were recognized in sec. 21; an AEC mine listing noted the Falcon 1 and 2 claims in sec. 21. The name "Falcon" was mentioned as an alternate to the Cedar at the top of this page because the State Mine Inspector's Office has used "Falcon" for this mine on the Cedar claims; they however, also listed the location as being 4 miles southeast of Grants.

The name Yucca is an alternative to Cedar (Hilpert, 1969) and the State Mine Inspector's Office records noted that what they called the "Falcon" adjoined the Yucca Mine. They may have started out as two separate pits and coalesced later. At present the pit appears as one working.

The mine was worked from 1952-1957 by Falcon Uranium and Oil Corporation; last registration was February, 1957.

- References:
- (1) Hilpert, L., 1969, Uranium Resources of NW New Mexico, U.S.G.S., Prof. Paper 603.
  - (2) State Mine Inspector's Office, inactive uranium mine file.
  - (3) U.S. AEC, uranium mine records, GJO/AEC.
  - (4) Field notes 3/21/80.

V-75



Photo (a) Looking generally southwest at open pit mine on Cedar 1 Claims; overburden pile at center behind the pit, Grants at right in background. At upper left is the remnants of an abandoned aggregate pit operation.

703



Photo (b) Looking westward into intraformational fold exposed in north end of open pit.



Photo (c) Looking westward into intraformational fold parallel to and 50' south of the fold in Photo (b). Scintillometer response was moderate, but visible mineralization scant.

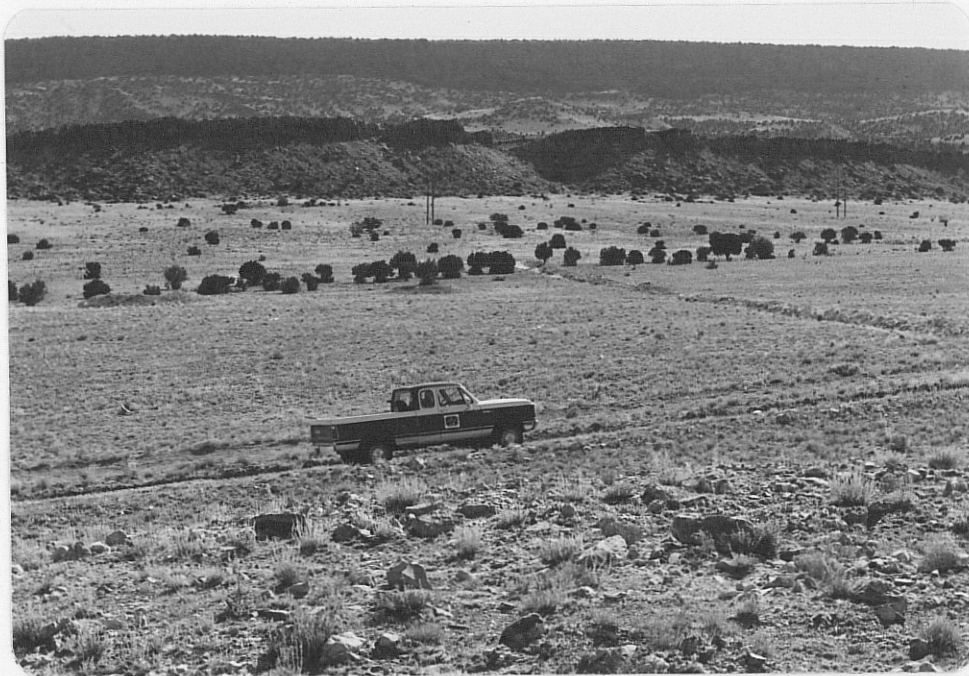


Photo (d) Linear prospecting trench extending eastward (upper right) from Cedar 1 open pit.



Photo (e) Looking westward at linear prospecting trench near southeast corner of sec. 20.

765 V-77