

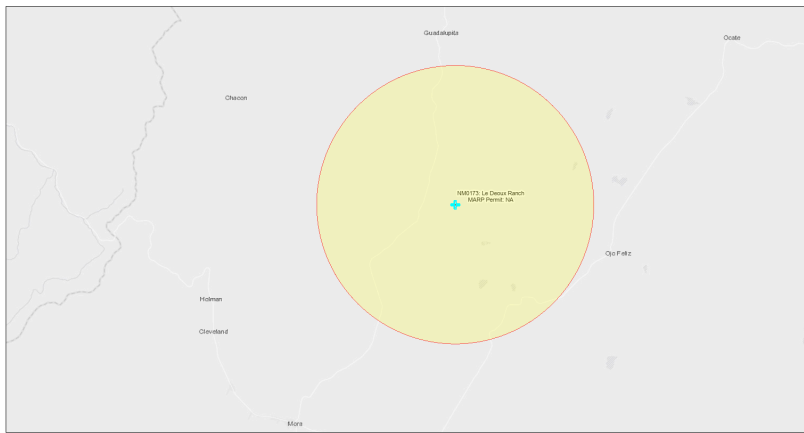


EJScreen Community Report

This report provides environmental and socioeconomic information for user-defined areas, and combines that data into environmental justice and supplemental indexes.

Le Deoux Ranch NM0173

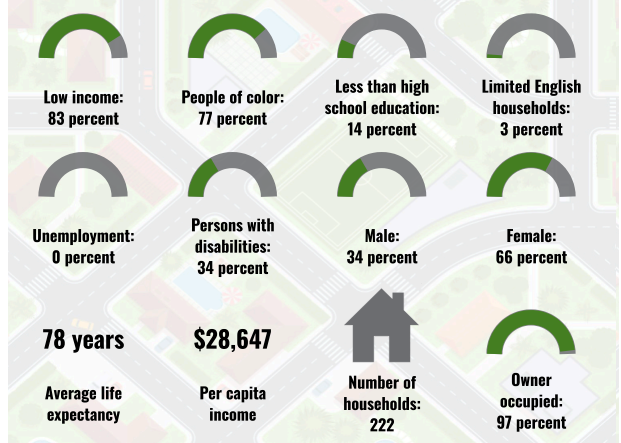
5 miles Ring Centered at 36.088196,-105.226454
Population: 483
Area in square miles: 78.53



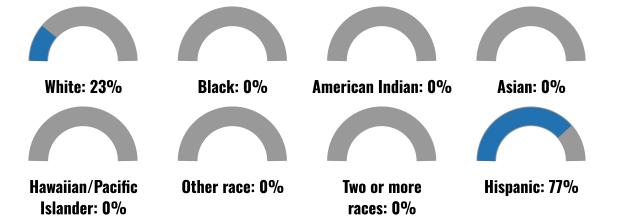
September 24, 2024
Le Deoux Ranch NM0173
Abandoned Uranium Mines

Map: Mexico Energy, Minerals and Natural Resources Department; Bureau of Land Management; Texas Parks & Wildlife; Esri; HERE; DeLorme; USGS; EPA; NOAA; Esri; HERE; DeLorme

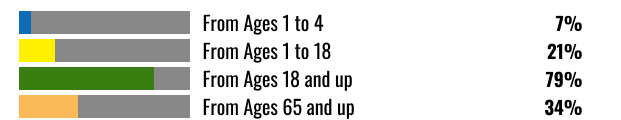
COMMUNITY INFORMATION



BREAKDOWN BY RACE



BREAKDOWN BY AGE



LIMITED ENGLISH SPEAKING BREAKDOWN



Notes: Numbers may not sum to totals due to rounding. Hispanic population can be of any race. Source: U.S. Census Bureau, American Community Survey (ACS) 2018-2022. Life expectancy data comes from the Centers for Disease Control.

LANGUAGES SPOKEN AT HOME

LANGUAGE	PERCENT
English	42%
Spanish	56%
French, Haitian, or Cajun	2%
Total Non-English	58%

Report for 5 miles Ring Centered at 36.088196,-105.226454
Report produced September 24, 2024 using EJScreen Version 2.3

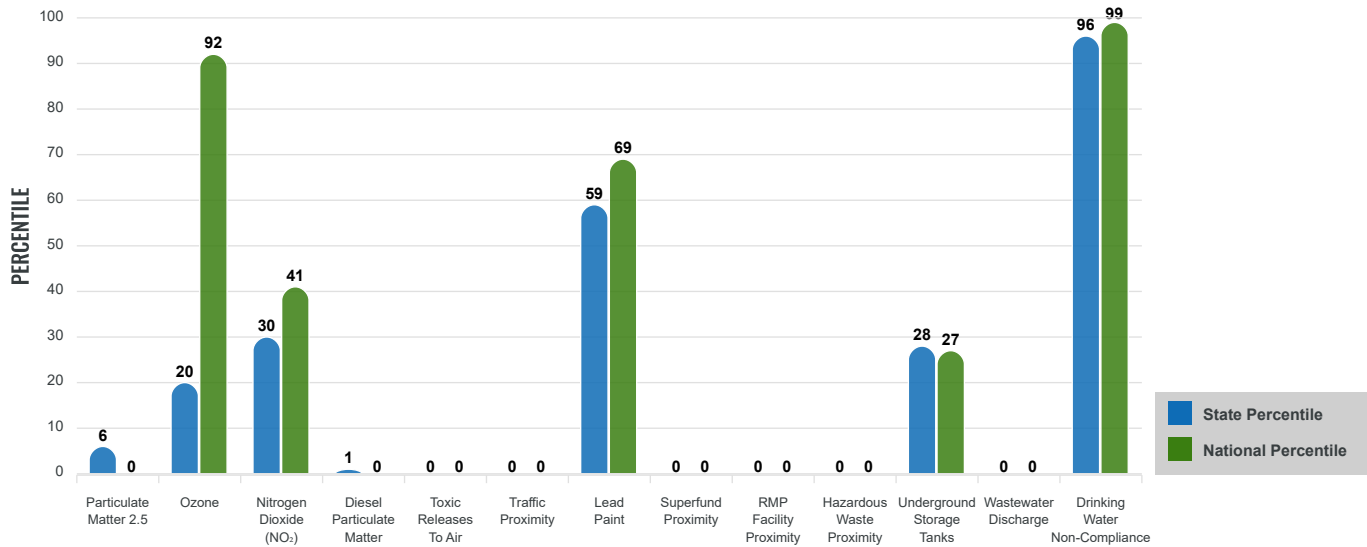
Environmental Justice & Supplemental Indexes

The environmental justice and supplemental indexes are a combination of environmental and socioeconomic information. There are thirteen EJ indexes and supplemental indexes in EJScreen reflecting the 13 environmental indicators. The indexes for a selected area are compared to those for all other locations in the state or nation. For more information and calculation details on the EJ and supplemental indexes, please visit the [EJScreen website](#).

EJ INDEXES

The EJ indexes help users screen for potential EJ concerns. To do this, the EJ index combines data on low income and people of color populations with a single environmental indicator.

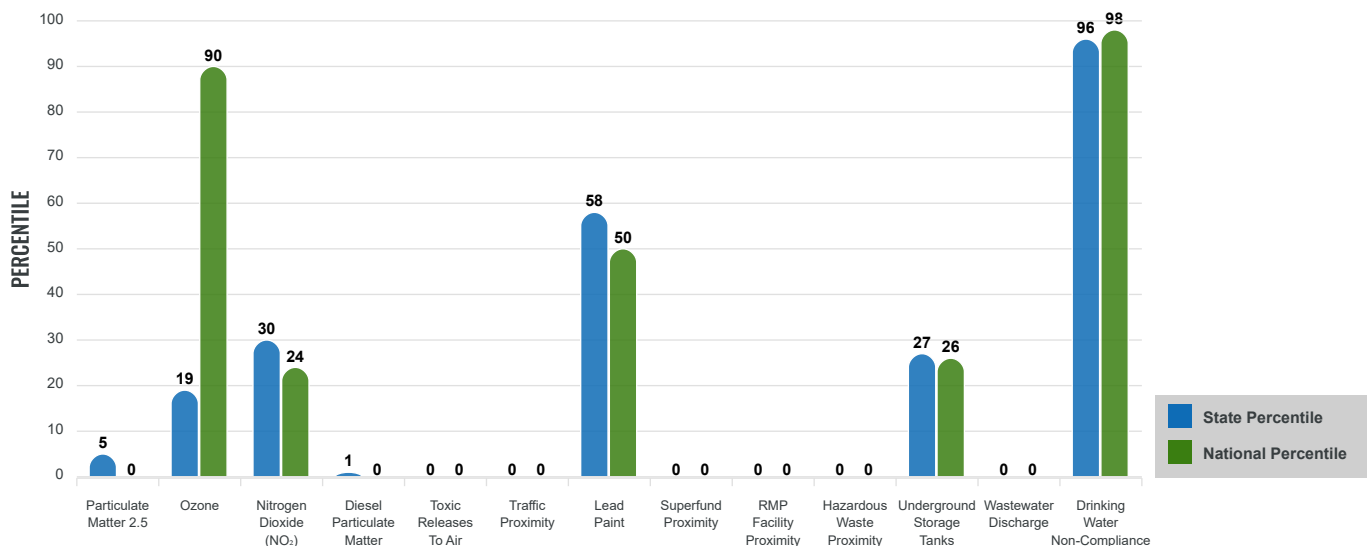
EJ INDEXES FOR THE SELECTED LOCATION



SUPPLEMENTAL INDEXES

The supplemental indexes offer a different perspective on community-level vulnerability. They combine data on percent low income, percent persons with disabilities, percent less than high school education, percent limited English speaking, and percent low life expectancy with a single environmental indicator.

SUPPLEMENTAL INDEXES FOR THE SELECTED LOCATION



Report for 5 miles Ring Centered at 36.088196,-105.226454

Report produced September 24, 2024 using EJScreen Version 2.3

EJScreen Environmental and Socioeconomic Indicators Data

SELECTED VARIABLES	VALUE	STATE AVERAGE	PERCENTILE IN STATE	USA AVERAGE	PERCENTILE IN USA
ENVIRONMENTAL BURDEN INDICATORS					
Particulate Matter 2.5 (µg/m ³)	4.54	6.11	3	8.45	0
Ozone (ppb)	62	65.3	11	61.8	58
Nitrogen Dioxide (NO ₂) (ppbv)	3.6	8.1	15	7.8	11
Diesel Particulate Matter (µg/m ³)	0.00768	0.187	0	0.191	0
Toxic Releases to Air (toxicity-weighted concentration)	0	29	0	4,600	0
Traffic Proximity (daily traffic count/distance to road)	0	730,000	0	1,700,000	0
Lead Paint (% Pre-1960 Housing)	0.049	0.19	37	0.3	26
Superfund Proximity (site count/km distance)	0	0.34	0	0.39	0
RMP Facility Proximity (facility count/km distance)	0	0.2	0	0.57	0
Hazardous Waste Proximity (facility count/km distance)	0	1.2	0	3.5	0
Underground Storage Tanks (count/km ²)	0.00022	2.8	27	3.6	26
Wastewater Discharge (toxicity-weighted concentration/m distance)	0	990000	0	700000	0
Drinking Water Non-Compliance (points)	3.7	5.6	84	2.2	89
SOCIOECONOMIC INDICATORS					
Demographic Index USA	3.18	N/A	N/A	1.34	96
Supplemental Demographic Index USA	2.83	N/A	N/A	1.64	94
Demographic Index State	3.45	2.16	92	N/A	N/A
Supplemental Demographic Index State	2.48	1.62	88	N/A	N/A
People of Color	77%	62%	69	40%	81
Low Income	83%	39%	97	30%	98
Unemployment Rate	0%	6%	0	6%	0
Limited English Speaking Households	3%	6%	58	5%	69
Less Than High School Education	14%	14%	60	11%	69
Under Age 5	7%	5%	73	5%	70
Over Age 64	34%	20%	87	18%	92

*Diesel particulate matter index is from the EPA's Air Toxics Data Update, which is the Agency's ongoing, comprehensive evaluation of air toxics in the United States. This effort aims to prioritize air toxics, emission sources, and locations of interest for further study. It is important to remember that the air toxics data presented here provide broad estimates of health risks over geographic areas of the country, not definitive risks to specific individuals or locations. More information on the Air Toxics Data Update can be found at: <https://www.epa.gov/haps/air-toxics-data-update>.

Sites reporting to EPA within defined area:

Superfund	0
Hazardous Waste, Treatment, Storage, and Disposal Facilities	0
Water Dischargers	0
Air Pollution	0
Brownfields	0
Toxic Release Inventory	0

Other community features within defined area:

Schools	0
Hospitals	0
Places of Worship	1

Other environmental data:

Air Non-attainment	No
Impaired Waters	Yes

Selected location contains American Indian Reservation Lands*	No
Selected location contains a "Justice40 (CEJST)" disadvantaged community	Yes
Selected location contains an EPA IRA disadvantaged community	Yes

Report for 5 miles Ring Centered at 36.088196,-105.226454
 Report produced September 24, 2024 using EJScreen Version 2.3

EJScreen Environmental and Socioeconomic Indicators Data

HEALTH INDICATORS

INDICATOR	VALUE	STATE AVERAGE	STATE PERCENTILE	US AVERAGE	US PERCENTILE
Low Life Expectancy	20%	19%	60	20%	59
Heart Disease	7.6	5.9	87	5.8	84
Asthma	10	11.2	11	10.3	45
Cancer	6.6	6.1	66	6.4	51
Persons with Disabilities	33.9%	17.1%	97	13.7%	99

CLIMATE INDICATORS

INDICATOR	VALUE	STATE AVERAGE	STATE PERCENTILE	US AVERAGE	US PERCENTILE
Flood Risk	N/A	9%	N/A	12%	N/A
Wildfire Risk	N/A	58%	N/A	14%	N/A

CRITICAL SERVICE GAPS

INDICATOR	VALUE	STATE AVERAGE	STATE PERCENTILE	US AVERAGE	US PERCENTILE
Broadband Internet	63%	20%	96	13%	99
Lack of Health Insurance	2%	10%	8	9%	15
Housing Burden	No	N/A	N/A	N/A	N/A
Transportation Access Burden	Yes	N/A	N/A	N/A	N/A
Food Desert	Yes	N/A	N/A	N/A	N/A

Report for 5 miles Ring Centered at 36.088196,-105.226454

Report produced September 24, 2024 using EJScreen Version 2.3

Location: User-specified point center at 36.088196, -105.226454
 Ring (buffer): 5-miles radius
 Description: Le Deoux Ranch NM0173

Summary of ACS Estimates		2018 - 2022
Population		483
Population Density (per sq. mile)		6
People of Color Population		374
% People of Color Population		77%
Households		222
Housing Units		311
Housing Units Built Before 1950		14
Per Capita Income		28,647
Land Area (sq. miles) (Source: SF1)		83.56
% Land Area		100%
Water Area (sq. miles) (Source: SF1)		0.05
% Water Area		0%

	2018 - 2022 ACS Estimates	Percent	MOE (±)
Population by Race			
Total	483	100%	310
Population Reporting One Race	306	63%	497
White	199	41%	315
Black	0	0%	13
American Indian	0	0%	13
Asian	0	0%	13
Pacific Islander	0	0%	13
Some Other Race	107	22%	130
Population Reporting Two or More Races	177	37%	250
Total Hispanic Population	374	77%	289
Total Non-Hispanic Population	109		
White Alone	109	23%	116
Black Alone	0	0%	13
American Indian Alone	0	0%	13
Non-Hispanic Asian Alone	0	0%	13
Pacific Islander Alone	0	0%	13
Other Race Alone	0	0%	13
Two or More Races Alone	0	0%	13
Population by Sex			
Male	166	34%	151
Female	317	66%	216
Population by Age			
Age 0-4	34	7%	66
Age 0-17	101	21%	120
Age 18+	382	79%	209
Age 65+	164	34%	127

Data Note: Detail may not sum to totals due to rounding. Hispanic population can be of any race.

N/A means not available. **Source:** U.S. Census Bureau, American Community Survey (ACS) 2018 - 2022

Location: User-specified point center at 36.088196, -105.226454

Ring (buffer): 5-miles radius

Description: Le Deoux Ranch NM0173

	2018 - 2022 ACS Estimates	Percent	MOE (±)
Population 25+ by Educational Attainment			
Total	382	100%	223
Less than 9th Grade	52	14%	78
9th - 12th Grade, No Diploma	0	0%	37
High School Graduate	145	38%	140
Some College, No Degree	48	13%	120
Associate Degree	1	0%	76
Bachelor's Degree or more	137	36%	104
Population Age 5+ Years by Ability to Speak English			
Total	449	100%	304
Speak only English	258	57%	171
Non-English at Home ¹⁺²⁺³⁺⁴	192	43%	211
¹ Speak English "very well"	150	33%	211
² Speak English "well"	9	2%	46
³ Speak English "not well"	18	4%	63
⁴ Speak English "not at all"	15	3%	56
³⁺⁴ Speak English "less than well"	33	7%	84
²⁺³⁺⁴ Speak English "less than very well"	42	9%	96
Limited English Speaking Households*			
Total	7	100%	28
Speak Spanish	7	100%	17
Speak Other Indo-European Languages	0	0%	13
Speak Asian-Pacific Island Languages	0	0%	13
Speak Other Languages	0	0%	13
Households by Household Income			
Household Income Base	222	100%	147
< \$15,000	40	18%	107
\$15,000 - \$25,000	50	23%	76
\$25,000 - \$50,000	28	13%	80
\$50,000 - \$75,000	94	42%	88
\$75,000 +	9	4%	91
Occupied Housing Units by Tenure			
Total	222	100%	147
Owner Occupied	215	97%	148
Renter Occupied	6	3%	24
Employed Population Age 16+ Years			
Total	382	100%	223
In Labor Force	141	37%	157
Civilian Unemployed in Labor Force	0	0%	13
Not In Labor Force	241	63%	205

Data Note: Detail may not sum to totals due to rounding. Hispanic population can be of anyrace.

N/A means not available. **Source:** U.S. Census Bureau, American Community Survey (ACS)

*Households in which no one 14 and over speaks English "very well" or speaks English only.

Location: User-specified point center at 36.088196, -105.226454

Ring (buffer): 5-miles radius

Description: Le Deoux Ranch NM0173

	2018 - 2022 ACS Estimates	Percent	MOE (±)
Population by Language Spoken at Home*			
Total (persons age 5 and above)	594	100%	323
English	249	42%	221
Spanish	333	56%	274
French, Haitian, or Cajun	12	2%	65
German or other West Germanic	0	0%	13
Russian, Polish, or Other Slavic	0	0%	13
Other Indo-European	0	0%	13
Korean	0	0%	13
Chinese (including Mandarin, Cantonese)	0	0%	13
Vietnamese	0	0%	13
Tagalog (including Filipino)	0	0%	13
Other Asian and Pacific Island	0	0%	13
Arabic	1	0%	7
Other and Unspecified	0	0%	13
Total Non-English	346	58%	391

Data Note: Detail may not sum to totals due to rounding. Hispanic population can be of any race.
N/A means not available. **Source:** U.S. Census Bureau, American Community Survey (ACS) 2018 - 2022.
*Population by Language Spoken at Home is available at the census tract summary level and up.