

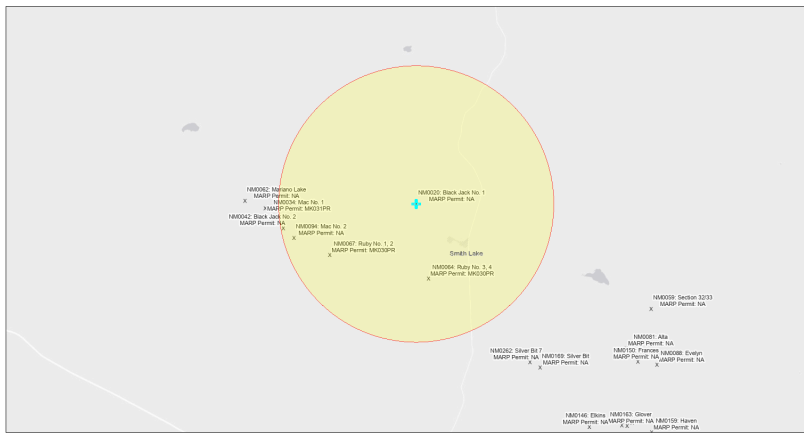


EJScreen Community Report

This report provides environmental and socioeconomic information for user-defined areas, and combines that data into environmental justice and supplemental indexes.

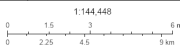
Black Jack No. 1 NM0020

5 miles Ring Centered at 35.545450,-108.167677
Population: 651
Area in square miles: 78.53



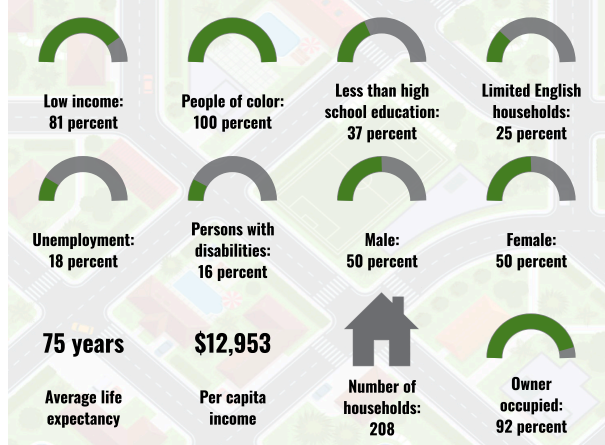
September 12, 2024

Black Jack No. 1 NM0020
Abandoned Uranium Mines

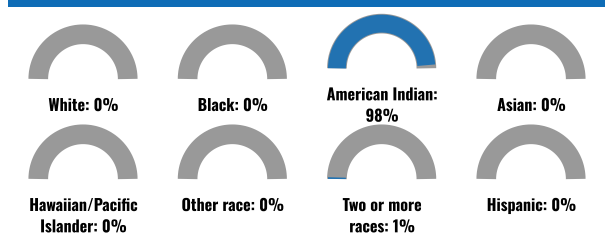


Bureau of Land Management, EPA, HHS, Census, USGS, EPA, USF, New Mexico Energy, Storage and Natural Resources Department, EPA, HHS, USF

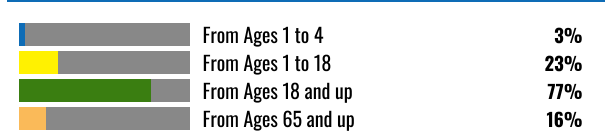
COMMUNITY INFORMATION



BREAKDOWN BY RACE



BREAKDOWN BY AGE



LIMITED ENGLISH SPEAKING BREAKDOWN



Notes: Numbers may not sum to totals due to rounding. Hispanic population can be of any race. Source: U.S. Census Bureau American Community Survey (ACS) 2018-2022. Life expectancy data comes from the Centers for Disease Control.

LANGUAGES SPOKEN AT HOME

LANGUAGE	PERCENT
English	31%
Other and Unspecified	69%
Total Non-English	69%

Report for 5 miles Ring Centered at 35.545450,-108.167677
Report produced September 12, 2024 using EJScreen Version 2.3

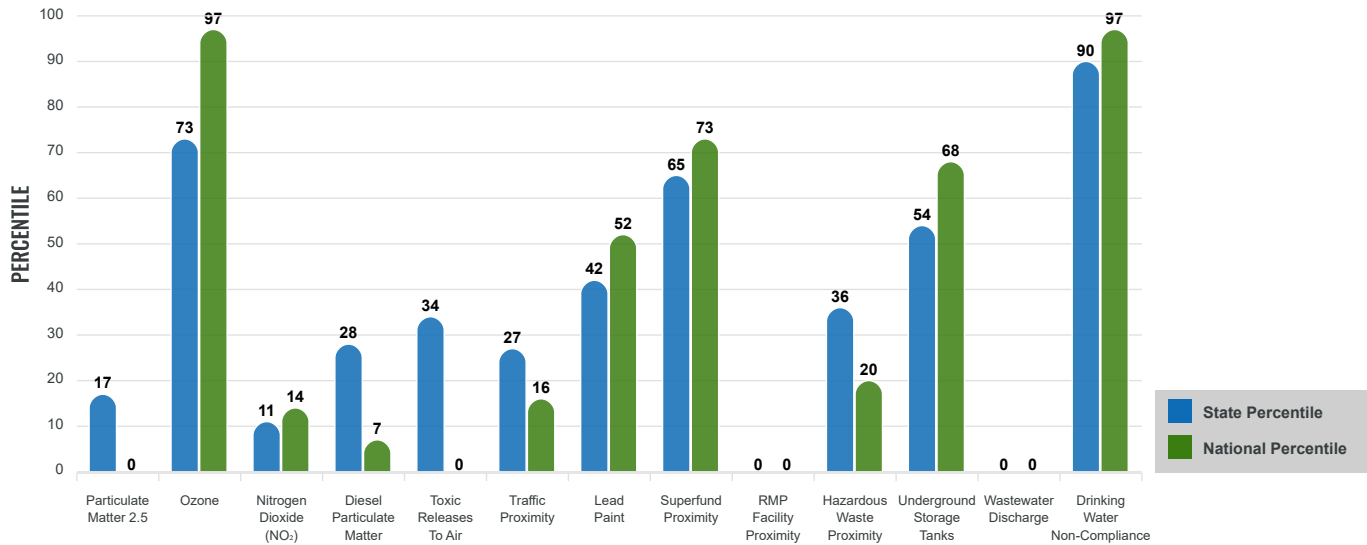
Environmental Justice & Supplemental Indexes

The environmental justice and supplemental indexes are a combination of environmental and socioeconomic information. There are thirteen EJ indexes and supplemental indexes in EJScreen reflecting the 13 environmental indicators. The indexes for a selected area are compared to those for all other locations in the state or nation. For more information and calculation details on the EJ and supplemental indexes, please visit the [EJScreen website](#).

EJ INDEXES

The EJ indexes help users screen for potential EJ concerns. To do this, the EJ index combines data on low income and people of color populations with a single environmental indicator.

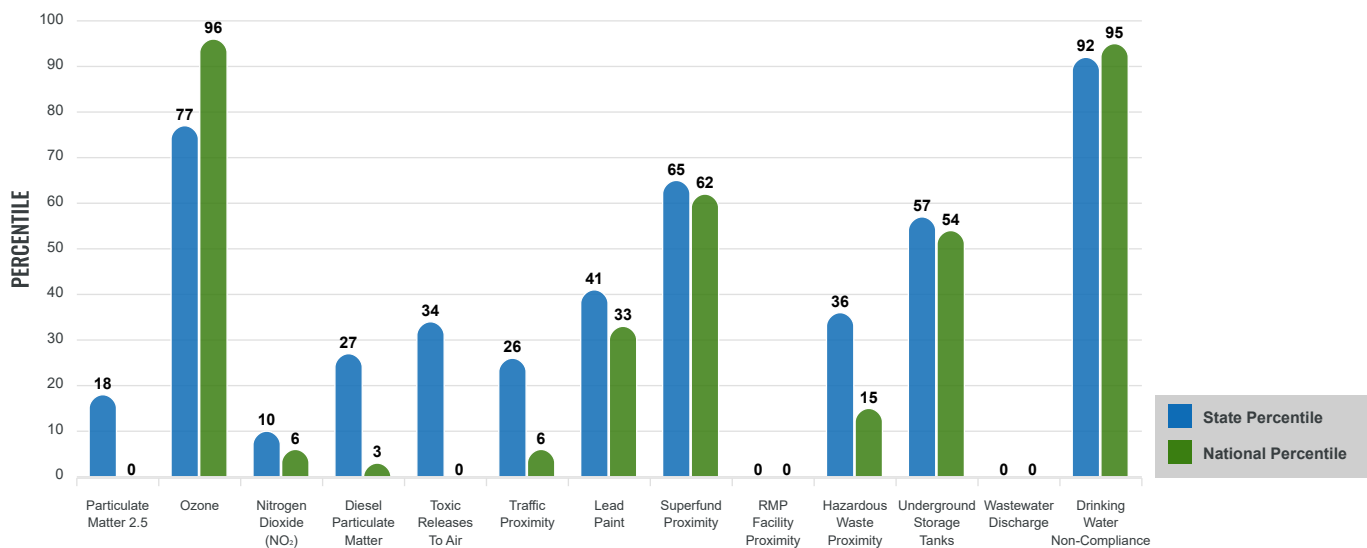
EJ INDEXES FOR THE SELECTED LOCATION



SUPPLEMENTAL INDEXES

The supplemental indexes offer a different perspective on community-level vulnerability. They combine data on percent low income, percent persons with disabilities, percent less than high school education, percent limited English speaking, and percent low life expectancy with a single environmental indicator.

SUPPLEMENTAL INDEXES FOR THE SELECTED LOCATION



Report for 5 miles Ring Centered at 35.545450,-108.167677

Report produced September 12, 2024 using EJScreen Version 2.3

EJScreen Environmental and Socioeconomic Indicators Data

SELECTED VARIABLES	VALUE	STATE AVERAGE	PERCENTILE IN STATE	USA AVERAGE	PERCENTILE IN USA
ENVIRONMENTAL BURDEN INDICATORS					
Particulate Matter 2.5 (µg/m ³)	4.71	6.11	8	8.45	0
Ozone (ppb)	64.5	65.3	36	61.8	68
Nitrogen Dioxide (NO ₂) (ppbv)	2.1	8.1	4	7.8	2
Diesel Particulate Matter (µg/m ³)	0.0263	0.187	13	0.191	2
Toxic Releases to Air (toxicity-weighted concentration)	0	29	15	4,600	0
Traffic Proximity (daily traffic count/distance to road)	8,300	730,000	14	1,700,000	4
Lead Paint (% Pre-1960 Housing)	0.02	0.19	28	0.3	19
Superfund Proximity (site count/km distance)	0.021	0.34	61	0.39	56
RMP Facility Proximity (facility count/km distance)	0	0.2	0	0.57	0
Hazardous Waste Proximity (facility count/km distance)	0.015	1.2	35	3.5	15
Underground Storage Tanks (count/km ²)	0.027	2.8	33	3.6	29
Wastewater Discharge (toxicity-weighted concentration/m distance)	0	990000	0	700000	0
Drinking Water Non-Compliance (points)	0.99	5.6	75	2.2	77
SOCIOECONOMIC INDICATORS					
Demographic Index USA	3.48	N/A	N/A	1.34	98
Supplemental Demographic Index USA	3.14	N/A	N/A	1.64	97
Demographic Index State	3.86	2.16	98	N/A	N/A
Supplemental Demographic Index State	2.91	1.62	96	N/A	N/A
People of Color	100%	62%	97	40%	97
Low Income	81%	39%	96	30%	97
Unemployment Rate	18%	6%	92	6%	94
Limited English Speaking Households	25%	6%	95	5%	95
Less Than High School Education	37%	14%	94	11%	95
Under Age 5	3%	5%	42	5%	35
Over Age 64	16%	20%	43	18%	48

*Diesel particulate matter index is from the EPA's Air Toxics Data Update, which is the Agency's ongoing, comprehensive evaluation of air toxics in the United States. This effort aims to prioritize air toxics, emission sources, and locations of interest for further study. It is important to remember that the air toxics data presented here provide broad estimates of health risks over geographic areas of the country, not definitive risks to specific individuals or locations. More information on the Air Toxics Data Update can be found at: <https://www.epa.gov/haps/air-toxics-data-update>.

Sites reporting to EPA within defined area:

Superfund	0
Hazardous Waste, Treatment, Storage, and Disposal Facilities	0
Water Dischargers	1
Air Pollution	1
Brownfields	0
Toxic Release Inventory	0

Other community features within defined area:

Schools	0
Hospitals	0
Places of Worship	1

Other environmental data:

Air Non-attainment	No
Impaired Waters	Yes

Selected location contains American Indian Reservation Lands*	Yes
Selected location contains a "Justice40 (CEJST)" disadvantaged community	Yes
Selected location contains an EPA IRA disadvantaged community	Yes

Report for 5 miles Ring Centered at 35.545450,-108.167677
 Report produced September 12, 2024 using EJScreen Version 2.3

EJScreen Environmental and Socioeconomic Indicators Data

HEALTH INDICATORS

INDICATOR	VALUE	STATE AVERAGE	STATE PERCENTILE	US AVERAGE	US PERCENTILE
Low Life Expectancy	23%	19%	81	20%	79
Heart Disease	9.3	5.9	96	5.8	96
Asthma	16	11.2	99	10.3	99
Cancer	5.2	6.1	27	6.4	25
Persons with Disabilities	15.6%	17.1%	47	13.7%	67

CLIMATE INDICATORS

INDICATOR	VALUE	STATE AVERAGE	STATE PERCENTILE	US AVERAGE	US PERCENTILE
Flood Risk	5%	9%	49	12%	42
Wildfire Risk	0%	58%	0	14%	0

CRITICAL SERVICE GAPS

INDICATOR	VALUE	STATE AVERAGE	STATE PERCENTILE	US AVERAGE	US PERCENTILE
Broadband Internet	79%	20%	99	13%	99
Lack of Health Insurance	20%	10%	91	9%	92
Housing Burden	No	N/A	N/A	N/A	N/A
Transportation Access Burden	Yes	N/A	N/A	N/A	N/A
Food Desert	Yes	N/A	N/A	N/A	N/A

Report for 5 miles Ring Centered at 35.545450,-108.167677

Report produced September 12, 2024 using EJScreen Version 2.3

Location: User-specified point center at 35.545450, -108.167677
 Ring (buffer): 5-miles radius
 Description: Black Jack No. 1 NM0020

Summary of ACS Estimates		2018 - 2022
Population		651
Population Density (per sq. mile)		8
People of Color Population		650
% People of Color Population		100%
Households		208
Housing Units		271
Housing Units Built Before 1950		4
Per Capita Income		12,953
Land Area (sq. miles) (Source: SF1)		78.38
% Land Area		100%
Water Area (sq. miles) (Source: SF1)		0.12
% Water Area		0%

	2018 - 2022 ACS Estimates	Percent	MOE (±)
Population by Race			
Total	651	100%	383
Population Reporting One Race	645	99%	435
White	3	0%	25
Black	0	0%	20
American Indian	641	98%	344
Asian	0	0%	20
Pacific Islander	1	0%	13
Some Other Race	0	0%	13
Population Reporting Two or More Races	7	1%	134
Total Hispanic Population	2	0%	42
Total Non-Hispanic Population	649		
White Alone	1	0%	25
Black Alone	0	0%	13
American Indian Alone	641	98%	337
Non-Hispanic Asian Alone	0	0%	20
Pacific Islander Alone	1	0%	13
Other Race Alone	0	0%	13
Two or More Races Alone	7	1%	132
Population by Sex			
Male	329	50%	175
Female	323	50%	295
Population by Age			
Age 0-4	21	3%	24
Age 0-17	148	23%	176
Age 18+	504	77%	247
Age 65+	102	16%	55

Data Note: Detail may not sum to totals due to rounding. Hispanic population can be of any race.

N/A means not available. **Source:** U.S. Census Bureau, American Community Survey (ACS) 2018 - 2022

Location: User-specified point center at 35.545450, -108.167677
 Ring (buffer): 5-miles radius
 Description: Black Jack No. 1 NM0020

	2018 - 2022 ACS Estimates	Percent	MOE (±)
Population 25+ by Educational Attainment			
Total	439	100%	230
Less than 9th Grade	65	15%	48
9th - 12th Grade, No Diploma	99	23%	57
High School Graduate	155	35%	173
Some College, No Degree	79	18%	86
Associate Degree	19	4%	119
Bachelor's Degree or more	21	5%	48
Population Age 5+ Years by Ability to Speak English			
Total	630	100%	376
Speak only English	147	23%	236
Non-English at Home ¹⁺²⁺³⁺⁴	483	77%	203
¹ Speak English "very well"	327	52%	194
² Speak English "well"	98	16%	108
³ Speak English "not well"	53	8%	73
⁴ Speak English "not at all"	5	1%	45
³⁺⁴ Speak English "less than well"	58	9%	85
²⁺³⁺⁴ Speak English "less than very well"	156	25%	137
Limited English Speaking Households*			
Total	51	100%	44
Speak Spanish	0	0%	13
Speak Other Indo-European Languages	0	0%	13
Speak Asian-Pacific Island Languages	0	0%	13
Speak Other Languages	51	100%	38
Households by Household Income			
Household Income Base	208	100%	160
< \$15,000	72	34%	156
\$15,000 - \$25,000	43	21%	25
\$25,000 - \$50,000	43	21%	38
\$50,000 - \$75,000	29	14%	36
\$75,000 +	21	10%	67
Occupied Housing Units by Tenure			
Total	208	100%	160
Owner Occupied	191	92%	64
Renter Occupied	17	8%	163
Employed Population Age 16+ Years			
Total	525	100%	271
In Labor Force	183	35%	180
Civilian Unemployed in Labor Force	33	18%	53
Not In Labor Force	343	65%	194

Data Note: Detail may not sum to totals due to rounding. Hispanic population can be of anyrace.

N/A means not available. **Source:** U.S. Census Bureau, American Community Survey (ACS)

*Households in which no one 14 and over speaks English "very well" or speaks English only.

Location: User-specified point center at 35.545450, -108.167677

Ring (buffer): 5-miles radius

Description: Black Jack No. 1 NM0020

	2018 - 2022 ACS Estimates	Percent	MOE (±)
Population by Language Spoken at Home*			
Total (persons age 5 and above)	908	100%	328
English	277	31%	133
Spanish	0	0%	13
French, Haitian, or Cajun	0	0%	13
German or other West Germanic	0	0%	13
Russian, Polish, or Other Slavic	0	0%	13
Other Indo-European	0	0%	13
Korean	0	0%	13
Chinese (including Mandarin, Cantonese)	0	0%	13
Vietnamese	0	0%	13
Tagalog (including Filipino)	0	0%	13
Other Asian and Pacific Island	0	0%	13
Arabic	0	0%	13
Other and Unspecified	631	69%	266
Total Non-English	631	69%	354

Data Note: Detail may not sum to totals due to rounding. Hispanic population can be of any race.
 N/A means not available. **Source:** U.S. Census Bureau, American Community Survey (ACS) 2018 - 2022.
 *Population by Language Spoken at Home is available at the census tract summary level and up.