



NEW MEXICO ENVIRONMENT DEPARTMENT
GROUND WATER QUALITY BUREAU
PUBLIC INVOLVEMENT PLAN
(PIP)



Facility Name: Former General Crude Processing

Facility Location: 8201 East Main
Farmington, NM
Section 21, Township 30N, Range 12W

County: San Juan

Responsible Party: Morris Young, President
Desert Sun Investments
5796 US Highway 64
Farmington, NM 87401

Agency: Ground Water Quality Bureau
Pollution Prevention Section

GWQB Action: Permitting - New
DP-1903

Bureau Contact: Melanie Sandoval, Team Lead
(505) 827-2936
melanie.sandoval2@state.nm.us

Main bureau telephone number:
(505) 827-2900

EFFECTIVE DATE: February 28, 2020

REVISION DATE: N/A

/S/ Melanie Sandoval for Steve Pullen

Michelle Hunter
Chief, Ground Water Quality Bureau

Element 1 – Public Involvement Plan (PIP) Overview

The New Mexico Environment Department (NMED or Department), Ground Water Quality Bureau (Bureau) has developed this PIP for the application for a Ground Water Discharge Permit for the Former General Crude Processing facility. The permit for this facility is referred to as DP-1903.

The purpose of this PIP is to plan for providing public participation opportunities and information that may be needed for the community to participate in the permitting process for this facility. This PIP identifies information about the community and resources needed by the Bureau to incorporate community participation activities into the decision-making process. This PIP is developed in accordance with the Department's *Public Participation Policy* (Policy 07-13 or Policy), and incorporates the requirements of the Policy, as well as applicable regulatory and statutory public participation requirements.

This PIP implements the “elements” set forth in the Policy. Those elements include:

1. An overview of the Public Involvement Plan for the community affected by the activity
2. Bureau contact names and contact information, specifically for Limited English Proficiency (LEP) language assistance services (e.g., translation, interpreters) or for disability accommodations
3. A summary of the regulatory public participation framework associated with discharge permits
4. A description of community/stakeholder groups based on results of a preliminary environmental justice (EJ) screening
5. Details about planned public outreach activities

In developing this PIP, community participation needs were assessed to ensure appropriate public outreach. This was accomplished by identifying whether there is a combination of environmental and demographic factors that may impact public participation (e.g., low income community, minority community, LEP individuals, linguistically isolated households).

Public involvement associated with discharge permits occurs at different stages and in different forms. Public involvement activities required by statute or regulation are mandatory and subject to statutory or regulatory deadlines. Mandatory public involvement activities and associated time requirements relevant to this PIP are noted in the *Table of Mandated Public Involvement Activities* at the end of this PIP.

The Bureau plans to conduct the public involvement activities related to the permitting process outlined in the *Table of Public Involvement Activities* below. The activity timeline and dates are tentative and subject to change.

Table of Public Involvement Activities

Activity	Date
<p>Application Notice (PN-1) See <i>Table of Mandated Public Involvement Activities</i> at the end of this PIP for details.</p>	<p align="center">January 2020</p>
<p>Placement of a hardcopy of the PIP in the local NMED office: Farmington 1800 E. 30th St. Suite B Farmington, NM 87401 (505) 566-9741</p>	<p align="center">March 2020</p>
<p>Notice of availability of draft permit (PN-2) See <i>Table of Mandated Public Involvement Activities</i>.</p>	<p align="center">Within 60 days of determining the application is technically complete. Date to be determined.</p>

All notices for upcoming meetings or hearings will include a statement that any person who requires assistance, an interpreter, or an auxiliary aid to participate in the process may contact a specifically identified Department person to request those services. Requested interpretation services during the meeting and accommodations or services for persons with disabilities will be arranged to the extent possible.

This PIP is a “living” document that may be amended for numerous reasons, including the consideration of public comments and feedback.

Element 2 – Bureau Contact Information

PIP Specific Contacts

The Bureau contact for this discharge permit is:
 Melanie Sandoval, Team Leader
 NMED Ground Water Quality Bureau
 P.O. Box 5469, Santa Fe, NM 87502-5469
 505-827-2936 / melanie.sandoval2@state.nm.us

Non-English Language Speaker Assistance

All public notices will contain a statement that non-English speakers may call the Bureau contact listed above and request language assistance in order to learn more about this permit or the permitting process. Arrangements may be made for document translation or interpretation related to the permitting process as necessary and as resources allow.

Individuals with Disabilities Assistance

All public notices will contain a statement that disabled individuals may call the Bureau contact listed above and request assistance needed to participate in activities associated with the permitting process.

The following information will be provided in public notices so that hearing-impaired callers can contact the Bureau and ask questions about the activity or proceeding: Toll-free numbers are available for TDD or TTY users to access the New Mexico Relay network (for deaf or hearing-impaired callers), 1-800-659-1779; TTY users: 1-800-659-8331.

Websites

Outreach materials and notices will include links to the following website, where the Bureau's public notices and PIP information are posted:

Ground Water Quality Bureau – <https://www.env.nm.gov/gwqb/public-notice/>

Element 3 – Regulatory Framework for Public Participation Related to the Permitting Process

The public participation regulatory framework associated with the permitting process is identified in the *Table of Mandated Public Involvement Activities* at the end of this PIP. The Table identifies activities subject to statutory or regulatory deadlines, the associated regulatory requirements, and the associated dates or time periods.

Element 4 – Description of Community/Stakeholder Groups Based on the EJSCREEN

EJSCREEN Summary

To provide for adequate public participation opportunities and meaningful involvement of persons in the permitting process, the affected communities must first be identified, informed about proposed environmental actions affecting the community, and invited to share their comments and concerns. The EJSCREEN tool developed by the U.S. Environmental Protection Agency (EPA) helps identify communities that are low income, have minority populations, and have limited English proficiency that may benefit from a variety of approaches for notification and

outreach communication. This information is used to help plan for the community’s involvement in the public process for environmental activities or actions. In addition to the EJSCREEN results, the Bureau may consider additional information such as the U.S. Census Bureau website or NMED’s EJ Mapping Tool.

The Bureau considers the affected community to be those persons living within a 4-mile radius of the discharge site. The results of the EJSCREEN American Community Survey (ACS) Summary Report (attached to this PIP) are summarized in the table below.

EJSCREEN Results for the Affected Community

Total population	16,882
Total number of households	5,934
Percentage minority population	34%
Percentage Hispanic population	20%
Percentage of the population by race	Population reporting one race: White: 81% Black: 1% American Indian: 9% Asian: 1% Pacific Islander: 0% Some Other Race: 4%
Total number of persons greater than the age of five who speak English “less than very well”	478
Percentage of persons greater than the age of five who speak English “less than very well”	3%
Total number of linguistically isolated households	132
Percentage of linguistically isolated households (Total number of linguistically isolated households ÷ total number of households) X 100	2.2%
Languages by percentage in linguistically isolated households	Spanish: 69% Other Indo-European languages:0% Asian-Pacific Island languages:.. 9% Other languages: 22%
Percent linguistically isolated population, New Mexico*:	5.4%
Per capita income	\$30,119
Per capita income, USA**	\$29,979

* U.S. Census Bureau. 2011-2015 American Community Survey 5-Year Estimates, Table S1602. Limited English-Speaking Households. https://factfinder.census.gov/bkmk/table/1.0/en/ACS/15_5YR/S1602/0400000US35 (date of access: 7/26/2018).

** U.S. Census Bureau. 2015 American Community Survey 1-Year Estimates, Table S0201. Selected Population Profile in the United States. https://factfinder.census.gov/bkmk/table/1.0/en/ACS/15_1YR/S0201/0100000US (date of access: 7/26/2018).

Based on the EJSCREEN results regarding language proficiencies, the Bureau plans to conduct public outreach in accordance with the *Table of Mandated Public Involvement Activities* at the end of this PIP.

Element 5 – Detailed Actions and Outreach Activities with the Affected Public

Public involvement activities required by statute or regulation for this permitting action are listed in the *Table of Mandated Public Involvement Activities* at the end of this document.

Public Participation – Outreach Activities

The Bureau will conduct the following outreach activities during this permitting process:

- Placement of this PIP on the Bureau website and in nearby NMED field office
- Postal mailing and email notices
- Newspaper notices
- Notice posted on NMED website

Newspapers to be utilized in the notification process include:

- Statewide circulation (English): Albuquerque Journal
- Local circulation (English): Farmington Daily Times – San Juan County

Local, state, and federal government agencies, tribal entities, and land grant officials will be notified about the permitting process. A list of the agencies and officials notified can be provided upon request.

Indian Tribes, Pueblos and Nations will be notified about the permitting action through the contacts maintained by the Indian Affairs Department at the following URLs:

<http://www.iad.state.nm.us/apaches.html>

<http://www.iad.state.nm.us/navajo.html>

<http://www.iad.state.nm.us/pueblos.html>

Timelines and methods for submitting public comments are specified in the *Table of Mandated Public Involvement Activities*. Final discharge permit documents will be available from the Bureau's contact identified in Element 2 of this PIP.

Postal Mailing or E-Mailing of Notices to Persons on the Facility-Specific Mailing List

The Bureau solicits the names and contact information of interested parties with all public notices. The Bureau maintains those names on a Facility-Specific Mailing List and provides the individuals

with information about regulatory activities for the facility. Individuals, organizations, and other interested parties are added to the mailing list as requested. All public notices will contain a statement directing interested individuals to contact the Bureau contact for this permit if they want to be added to the facility specific mailing list.

Other means of outreach such as fliers announcing public comment periods and/or public meetings or hearings may be posted in locations throughout the community (e.g., local businesses, schools, libraries) and on the Department's website, at the Bureau's discretion after consideration of public interest and input.

Attachments

- A copy of the EJSCREEN ACS Summary Report, and a map showing the area evaluated

Table of Mandated Public Involvement Activities

Activity	Dates
<p>Application Notice (PN-1): The first notice of the Bureau’s receipt of the permit application – applicant’s obligations at 20.6.2.3108.B and C NMAC – Bureau’s obligations at 20.6.2.3108.E NMAC</p> <ul style="list-style-type: none"> • Signs (PN-1 synopsis¹ in English and Spanish) - Applicant obligation • Mailings to owners of nearby properties - Applicant obligation • Newspaper display ads (PN-1 synopsis in English and Spanish)- Applicant obligation • NMED website https://www.env.nm.gov/gwqb/public-notice/ • Notice to government agencies • Notice to interested parties 	<p>Within 30 days of the department deeming the application administratively complete</p>
<p>Permit Notice (PN-2): Notice to the public of the availability of a draft permit for a 30-day review and comment period – the notice will outline the process for requesting a public hearing – obligation at 20.6.2.3108.H through J NMAC</p> <ul style="list-style-type: none"> • NMED website https://www.env.nm.gov/gwqb/public-notice/ • Newspaper legal ads • Notification of interested parties • Notice to government agencies • Notice to Indian Tribes, Pueblos and Nations 	<p>Within 60 days of the department determining the application is technically complete and drafting a permit.</p>
<p>Public Hearing Notice (if required): Upon the Department’s determination that there is substantial public interest in the permit – obligation at 20.6.2.3108.M NMAC. Notice includes information on how to participate in the hearing, and how to request an interpreter or auxiliary aid if needed.</p> <ul style="list-style-type: none"> • NMED website https://www.env.nm.gov/gwqb/public-notice/ • Newspapers • Notice to interested parties • Notice to government agencies • Notice to Indian Tribes, Pueblos and Nations 	<p>Notice of the hearing shall occur at least 30 days prior to the hearing.</p>

¹ Suitable for display, the abbreviated format of the PN-1 synopsis does not contain all the information provided by a full public notice, e.g., language assistance or non-discrimination information.

Location: User-specified polygonal location
 Ring (buffer): 4-miles radius
 Description: DP-1903 Former General Crude Processing

Summary of ACS Estimates		2013 - 2017
Population		16,882
Population Density (per sq. mile)		315
Minority Population		5,768
% Minority		34%
Households		5,934
Housing Units		6,684
Housing Units Built Before 1950		108
Per Capita Income		30,119
Land Area (sq. miles) (Source: SF1)		53.57
% Land Area		99%
Water Area (sq. miles) (Source: SF1)		0.70
% Water Area		1%

	2013 - 2017 ACS Estimates	Percent	MOE (±)
Population by Race			
Total	16,882	100%	801
Population Reporting One Race	16,281	96%	1,610
White	13,692	81%	720
Black	170	1%	127
American Indian	1,601	9%	433
Asian	113	1%	75
Pacific Islander	50	0%	47
Some Other Race	654	4%	208
Population Reporting Two or More Races	601	4%	139
Total Hispanic Population	3,454	20%	326
Total Non-Hispanic Population	13,428		
White Alone	11,114	66%	717
Black Alone	144	1%	120
American Indian Alone	1,590	9%	392
Non-Hispanic Asian Alone	113	1%	75
Pacific Islander Alone	50	0%	47
Other Race Alone	28	0%	31
Two or More Races Alone	389	2%	138
Population by Sex			
Male	8,503	50%	398
Female	8,378	50%	475
Population by Age			
Age 0-4	1,108	7%	176
Age 0-17	4,634	27%	283
Age 18+	12,248	73%	478
Age 65+	2,344	14%	197

Data Note: Detail may not sum to totals due to rounding. Hispanic population can be of any race.

N/A means not available. **Source:** U.S. Census Bureau, American Community Survey (ACS) 2013 - 2017

Location: User-specified polygonal location
 Ring (buffer): 4-miles radius
 Description: DP-1903 Former General Crude Processing

	2013 - 2017 ACS Estimates	Percent	MOE (±)
Population 25+ by Educational Attainment			
Total	11,201	100%	411
Less than 9th Grade	439	4%	118
9th - 12th Grade, No Diploma	777	7%	119
High School Graduate	3,221	29%	227
Some College, No Degree	4,649	42%	282
Associate Degree	1,264	11%	126
Bachelor's Degree or more	2,115	19%	150
Population Age 5+ Years by Ability to Speak English			
Total	15,774	100%	754
Speak only English	13,693	87%	601
Non-English at Home ¹⁺²⁺³⁺⁴	2,081	13%	308
¹ Speak English "very well"	1,604	10%	265
² Speak English "well"	265	2%	74
³ Speak English "not well"	210	1%	143
⁴ Speak English "not at all"	3	0%	73
³⁺⁴ Speak English "less than well"	213	1%	143
²⁺³⁺⁴ Speak English "less than very well"	478	3%	146
Linguistically Isolated Households*			
Total	132	100%	75
Speak Spanish	91	69%	74
Speak Other Indo-European Languages	0	0%	12
Speak Asian-Pacific Island Languages	12	9%	12
Speak Other Languages	29	22%	52
Households by Household Income			
Household Income Base	5,934	100%	185
< \$15,000	417	7%	118
\$15,000 - \$25,000	453	8%	75
\$25,000 - \$50,000	1,250	21%	131
\$50,000 - \$75,000	1,169	20%	107
\$75,000 +	2,645	45%	206
Occupied Housing Units by Tenure			
Total	5,934	100%	185
Owner Occupied	5,044	85%	188
Renter Occupied	891	15%	97
Employed Population Age 16+ Years			
Total	12,798	100%	538
In Labor Force	7,873	62%	416
Civilian Unemployed in Labor Force	563	4%	144
Not In Labor Force	4,926	38%	255

Data Note: Detail may not sum to totals due to rounding. Hispanic population can be of anyrace.

N/A means not available. **Source:** U.S. Census Bureau, American Community Survey (ACS)

*Households in which no one 14 and over speaks English "very well" or speaks English only.

Location: User-specified polygonal location

Ring (buffer): 4-miles radius

Description: DP-1903 Former General Crude Processing

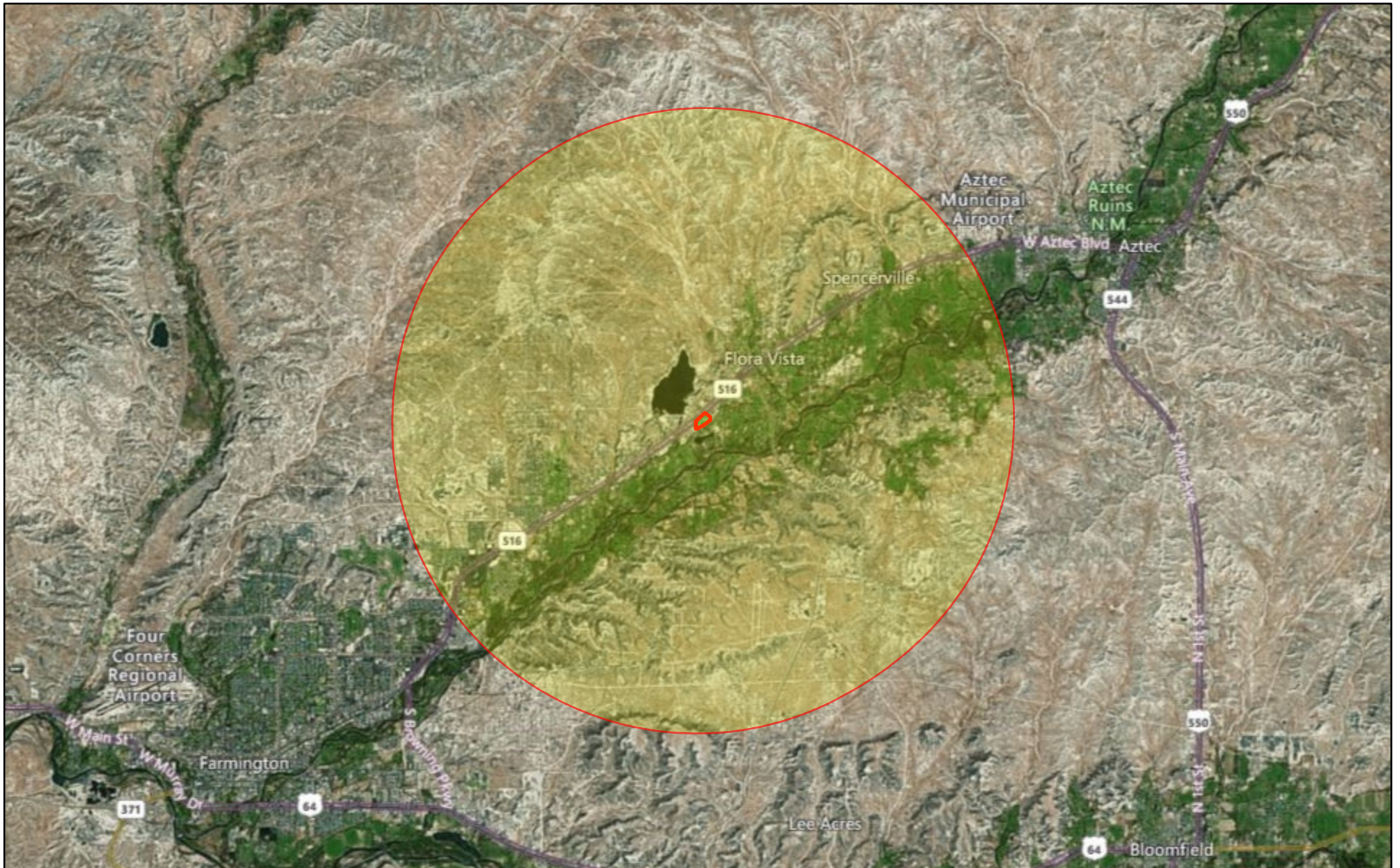
	2013 - 2017 ACS Estimates	Percent	MOE (±)
Population by Language Spoken at Home*			
Total (persons age 5 and above)	15,658	100%	661
English	13,714	88%	718
Spanish	1,347	9%	351
French	24	0%	17
French Creole	N/A	N/A	N/A
Italian	N/A	N/A	N/A
Portuguese	N/A	N/A	N/A
German	23	0%	33
Yiddish	N/A	N/A	N/A
Other West Germanic	N/A	N/A	N/A
Scandinavian	N/A	N/A	N/A
Greek	N/A	N/A	N/A
Russian	N/A	N/A	N/A
Polish	N/A	N/A	N/A
Serbo-Croatian	N/A	N/A	N/A
Other Slavic	N/A	N/A	N/A
Armenian	N/A	N/A	N/A
Persian	N/A	N/A	N/A
Gujarathi	N/A	N/A	N/A
Hindi	N/A	N/A	N/A
Urdu	N/A	N/A	N/A
Other Indic	N/A	N/A	N/A
Other Indo-European	0	0%	17
Chinese	16	0%	27
Japanese	N/A	N/A	N/A
Korean	0	0%	17
Mon-Khmer, Cambodian	N/A	N/A	N/A
Hmong	N/A	N/A	N/A
Thai	N/A	N/A	N/A
Laotian	N/A	N/A	N/A
Vietnamese	17	0%	75
Other Asian	5	0%	17
Tagalog	17	0%	21
Other Pacific Island	N/A	N/A	N/A
Navajo	N/A	N/A	N/A
Other Native American	N/A	N/A	N/A
Hungarian	N/A	N/A	N/A
Arabic	0	0%	17
Hebrew	N/A	N/A	N/A
African	N/A	N/A	N/A
Other and non-specified	480	3%	204
Total Non-English	1,944	12%	976

Data Note: Detail may not sum to totals due to rounding. Hispanic population can be of any race.

N/A means not available. **Source:** U.S. Census Bureau, American Community Survey (ACS) 2013 - 2017.

*Population by Language Spoken at Home is available at the census tract summary level and up.

DP-1903 Former General Crude Processing



February 10, 2020

 DP-1903 Former General Crude Processing

