



DIVISION OUTSTANDING WATERS HEARING

Joanna Hatt

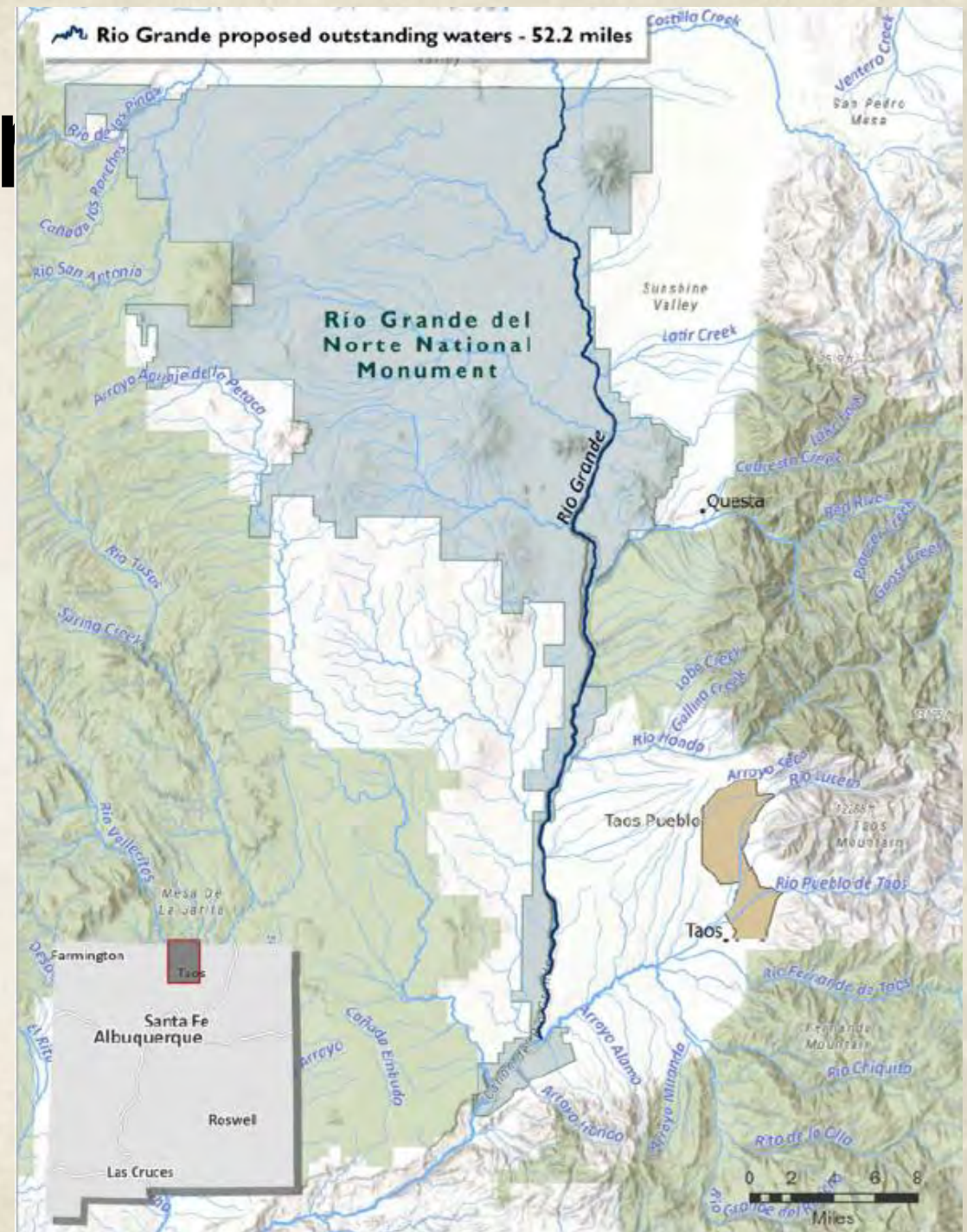
New Mexico Department of Game and Fish

Direct Testimony

June 2022

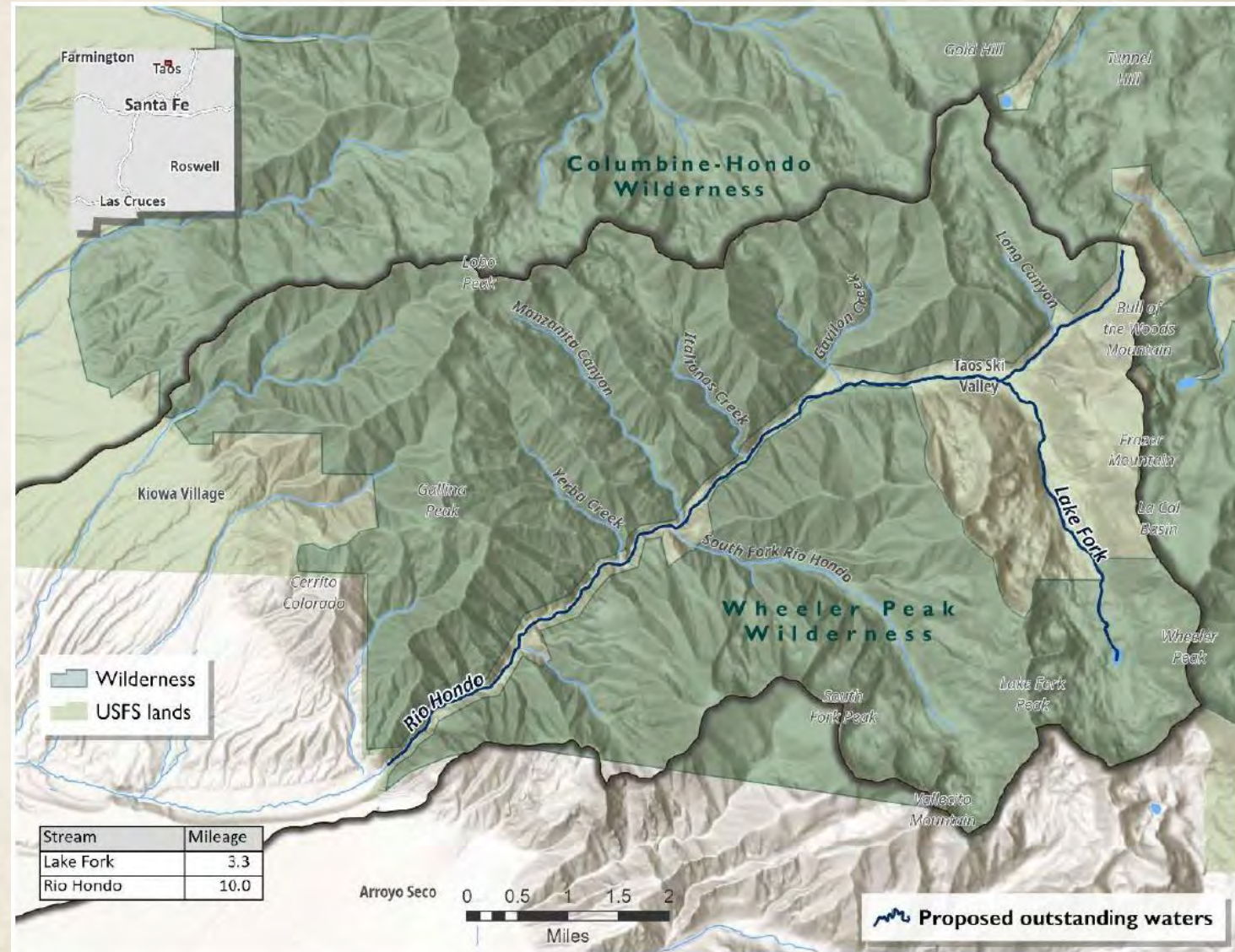
Nominated water

Upper Rio Grande



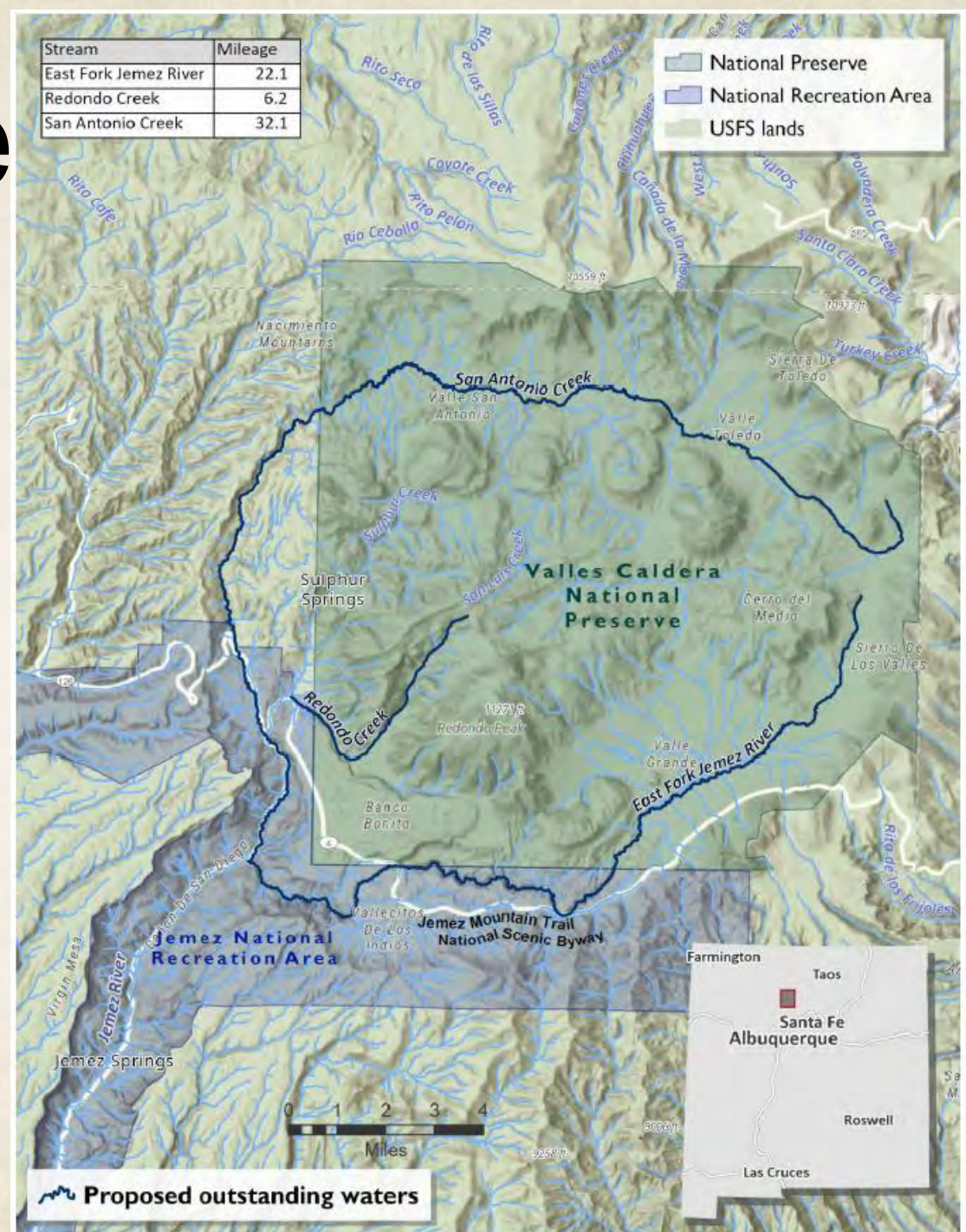
Nominated waters

Rio Hondo and Lake Fork



Nominated wate

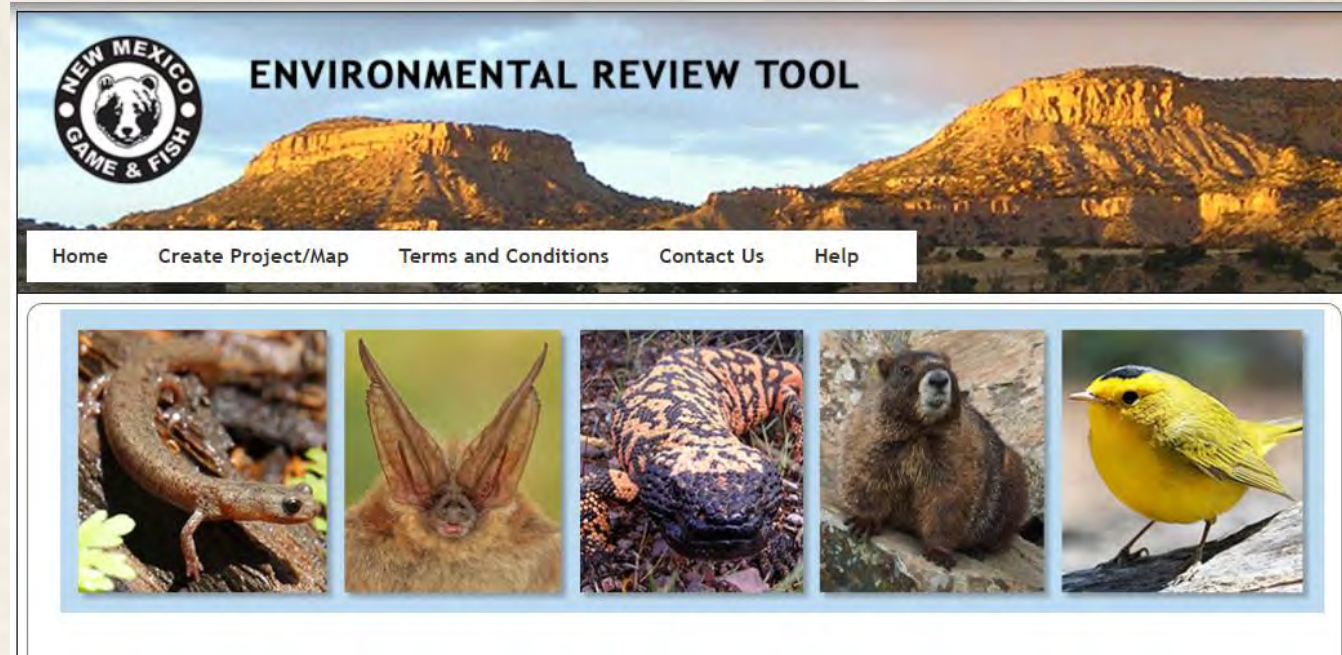
East Fork Jemez
San Antonio Creek
Redondo Creek



NM Environmental Review Tool (ERT)

Conservation planning tool informed by:

- ✓ Occurrence data from Natural Heritage NM
- ✓ Predicted distributions based on modeled habitat from Gap Analysis Project and NHNM



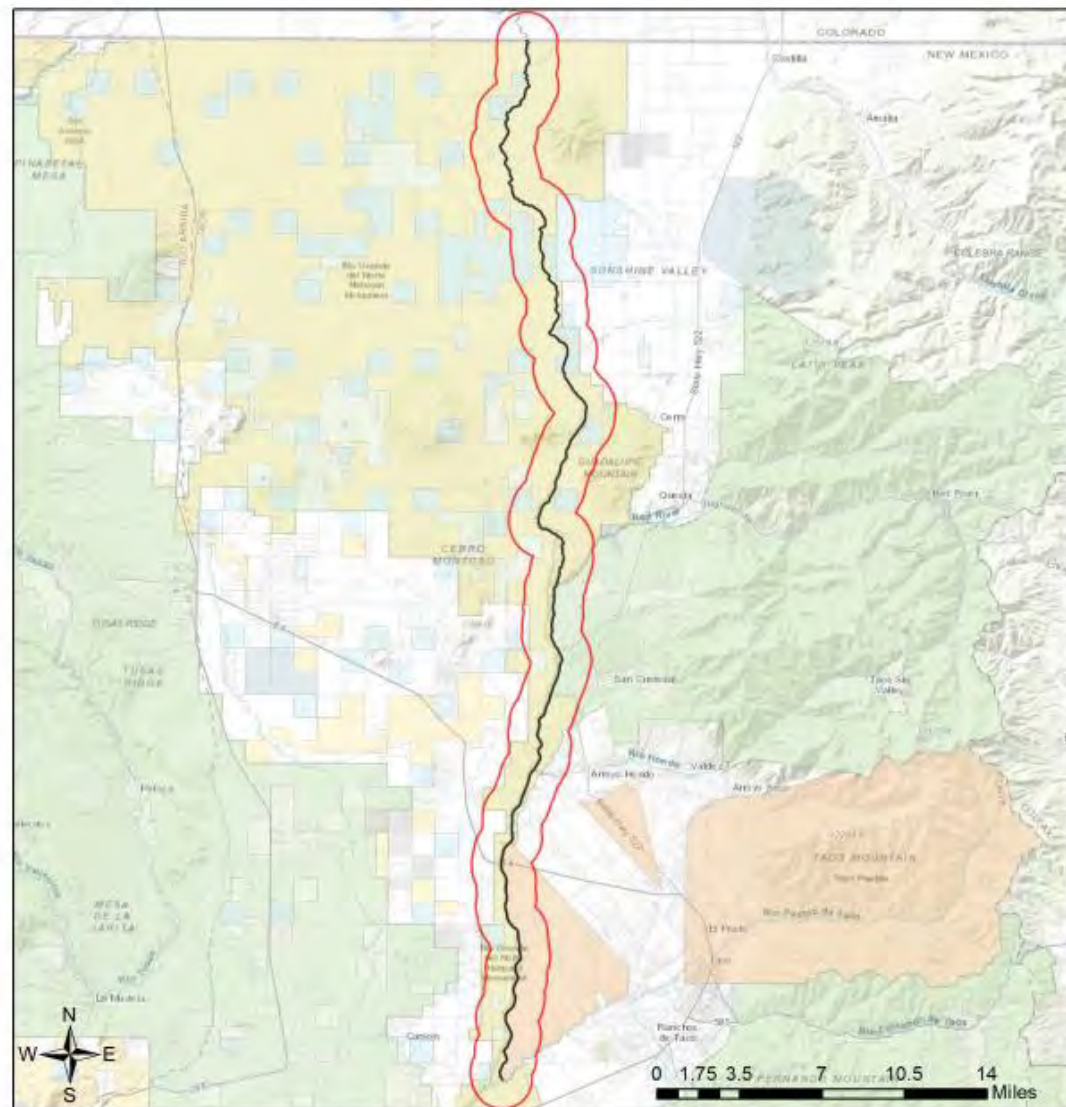
<https://nmert.org/>

NM Environmental Review Tool (ERT)

Identifies special status species:

- ✓ Species of Economic or Recreational Importance (SERI)
- ✓ Federally listed under Endangered Species Act
- ✓ State listed under NM Wildlife Conservation Act
- ✓ Species of Greatest Conservation Need (SGCN)
- ✓ Special Status Plants (listed or rare)





Project Boundary	Military	Private
Buffered Project Boundary	Dept. of Energy	State Land Office
NM_SurfaceOwnership_2016		
Bureau of Land Management	US Forest Service	NM Game & Fish Dept.
Bureau of Reclamation	Wildlife Area/Refuge	State Park
US Dept. of Agriculture	Tribal	National Park/Mon.

Common Name	Scientific Name	USFWS (ESA)	NMDGF (WCA)	NMDGF SGCN/SERI
Jemez Mountains Salamander	Plethodon neomexicanus	Endangered	E	SGCN
Northern Leopard Frog	Lithobates pipiens			SGCN
Fared Grebe	Podiceps nigricollis			SGCN
American Bittern	Botaurus lentiginosus			SGCN
Peregrine Falcon	Falco peregrinus		T	SGCN
Blue Grouse	Dendragapus obscurus			SGCN
Mountain Plover	Charadrius montanus			SGCN
Mexican Spotted Owl	Strix occidentalis lucida	LT		SGCN
Black Swift	Cypseloides niger			SGCN
Lewis's Woodpecker	Melanerpes lewis			SGCN
Red-Headed Woodpecker	Melanerpes erythrocephalus			SGCN
Williamson's Sapsucker	Sphyrapicus thyroideus			SGCN
Olive-Sided Flycatcher	Contopus cooperi			SGCN
Bank Swallow	Riparia riparia			SGCN
Pinyon Jay	Gymnorhinus cyanocephalus			SGCN
Clark's Nutcracker	Nucifraga columbiana			SGCN
Juniper Titmouse	Baeolophus ridgwayi			SGCN
Pygmy Nuthatch	Sitta pygmaea			SGCN
Western Bluebird	Sialia mexicana			SGCN
Loggerhead Shrike	Lanius ludovicianus			SGCN
Gray Vireo	Vireo vicinior		T	SGCN
Brown-Capped Rosy-Finch	Leucosticte australis			SGCN
Rio Grande Sucker	Catostomus plebeius			SGCN
Spotted Bat	Euderma maculatum		T	SGCN
American Pika	Ochotona princeps			SGCN
American Pika	Ochotona princeps			SGCN
Gunnison's Prairie Dog	Cynomys gunnisoni			SGCN
New Mexican Meadow Jumping Mouse	Zapus hudsonius luteus	Endangered	E	SGCN
Black Bear	Ursus americanus			SERI
Cougar	Puma concolor			SERI
Elk	Cervus canadensis nelsoni			SERI
Mule Deer	Odocoileus hemionus			SERI
				SERI

ESA = Endangered Species Act, WCA = Wildlife Conservation Act, SGCN = Species of Greatest Conservation Need, SERI = Species of Economic and Recreational Importance

Recreational Significance

All nominated waters have multiple Species of Economic or Recreational Importance (SERI; Exhibits 19 & 20-25, Table 3).



Species of Economic or Recreational Importance (SERI)

	Bighorn Sheep	Black Bear	Brown Trout	Cougar	Cutthroat Trout	Elk	Mule Deer	Pronghorn	Rio Grande Cutthroat Trout
Upper Rio Grande	X	X	X	X	X	X	X	X	X
Rio Hondo/Lake Fork	X	X		X	X	X	X		X
East Fork Jemez		X	X	X		X	X		X
San Antonio Creek		X	X	X		X	X		
Redondo Creek		X		X		X	X		

Ecological Significance

All nominated waters have many species that are endangered, threatened, or Species of Greatest Conservation Need (SGCN; Exhibits 19 and 20-25, Tables 4, 5, and 6).



Endangered and Threatened

Upper Rio Grande

	Endangered under ESA	Threatened under ESA	Endangered under NMWCA	Threatened under NMWCA
Southwestern Flycatcher	X		X	
Bald Eagle				X
Boreal Owl				X
Peregrine Falcon				X
Spotted Bat				X

Species of Greatest Conservation Need (SGCN)

Upper Rio Grande

Birds		Fishes	Herptiles	Mammals
American Bittern	Loggerhead Shrike	Rio Grande Chub	Northern Leopard Frog	American Pika
Bald Eagle	Mountain Plover			Gunnison's Prairie Dog
Bank Swallow	Olive-sided Flycatcher			Spotted Bat
Black Swift	Peregrine Falcon			
Boreal Owl	Pinyon Jay			
Brown-capped Rosy-finch	Pygmy Nuthatch			
Clark's Nutcracker	Red-headed Woodpecker			
Eared Grebe	Southwestern Willow Flycatcher			
Juniper Titmouse	Western Bluebird			
Lewis's Woodpecker	Williamson's Sapsucker			

Endangered and Threatened

Rio Hondo & Lake Fork

	Endangered under ESA	Threatened under ESA	Endangered under NMWCA	Threatened under NMWCA
White-tailed Ptarmigan			X	
Boreal Owl				X
Pacific Marten				X
Peregrine Falcon				X
Spotted Bat				X

Species of Greatest Conservation Need (SGCN)

Rio Hondo

Birds		Herptiles	Mammals
American Bittern	Mountain Plover	Northern Leopard Frog	American Pika
Bank Swallow	Olive-sided Flycatcher		Gunnison’s Prairie Dog
Black Swift	Peregrine Falcon		Pacific Marten
Boreal Owl	Pinyon Jay		Spotted Bat
Brown-capped Rosy-finch	Pygmy Nuthatch		
Clark’s Nutcracker	Red-headed Woodpecker		
Eared Grebe	Western Bluebird		
Juniper Titmouse	White-tailed Ptarmigan		
Lewis’s Woodpecker	Williamson’s Sapsucker		
Loggerhead Shrike			

Species of Greatest Conservation Need (SGCN)

Lake Fork

Birds		Herptiles	Mammals
American Bittern	Western Bluebird	Northern Leopard Frog	American Pika
Boreal Owl	White-tailed Ptarmigan		Pacific Marten
Brown-capped Rosy-finch	White-winged Crossbill		Spotted Bat
Clark’s Nutcracker	Williamson’s Sapsucker		
Lewis’s Woodpecker			
Olive-sided Flycatcher			
Peregrine Falcon			
Pinyon Jay			
Pygmy Nuthatch			
Red-headed Woodpecker			

Endangered and Threatened

East Fork Jemez

	Endangered under ESA	Threatened under ESA	Endangered under NMWCA	Threatened under NMWCA
Jemez Mountains Salamander	X		X	
Mexican Spotted Owl		X		
Wrinkled Marshsnail			X	
Boreal Owl				X
Gray Vireo				X
Peregrine Falcon				X
Spotted Bat				X

Species of Greatest Conservation Need (SGCN)

East Fork Jemez River

Birds		Fishes	Herptiles	Invertebrates	Mammals
American Bittern	Loggerhead Shrike	Rio Grande Chub	Jemez Mountains Salamander	Wrinkled Marshsnail	American Pika
Bank Swallow	Mexican Spotted Owl	Rio Grande Sucker	Northern Leopard Frog		Gunnison’s Prairie Dog
Black Swift	Mountain Plover				Long-legged Myotis
Boreal Owl	Olive-sided Flycatcher				Preble’s Shrew
Brown-capped Rosy-finch	Peregrine Falcon				Spotted Bat
Clark’s Nutcracker	Pinyon Jay				
Eared Grebe	Pygmy Nuthatch				
Flammulated Owl	Red-headed Woodpecker				
Gray Vireo	Western Bluebird				
Juniper Titmouse	Williamson’s Sapsucker				
Lewis’s Woodpecker					

Endangered and Threatened

San Antonio Creek

	Endangered under ESA	Threatened under ESA	Endangered under NMWCA	Threatened under NMWCA
Jemez Mountains Salamander	X		X	
New Mexico Meadow Jumping Mouse	X		X	
Mexican Spotted Owl		X		
Boreal Owl				X
Gray Vireo				X
Peregrine Falcon				X
Spotted Bat				X

Species of Greatest Conservation Need (SGCN)

San Antonio Creek

Birds		Fishes	Herptiles	Mammals
American Bittern	Loggerhead Shrike	Rio Grande Chub	Jemez Mountains Salamander	American Pika
Bank Swallow	Mexican Spotted Owl	Rio Grande Sucker	Northern Leopard Frog	Gunnison’s Prairie Dog
Black Swift	Mountain Plover			New Mexico Meadow Jumping Mouse
Blue Grouse	Northern Goshawk			Spotted Bat
Boreal Owl	Olive-sided Flycatcher			
Brown-capped Rosy-finch	Peregrine Falcon			
Clark’s Nutcracker	Pinyon Jay			
Eared Grebe	Pygmy Nuthatch			
Flammulated Owl	Red-headed Woodpecker			
Gray Vireo	Western Bluebird			
Juniper Titmouse	Williamson’s Sapsucker			
Lewis’s Woodpecker				

Endangered and Threatened

Redondo Creek

	Endangered under ESA	Threatened under ESA	Endangered under NMWCA	Threatened under NMWCA
Jemez Mountains Salamander	X		X	
New Mexico Meadow Jumping Mouse	X		X	
Mexican Spotted Owl		X		
Wrinkled Marshsnail			X	
Gray Vireo				X
Peregrine Falcon				X
Spotted Bat				X

Species of Greatest Conservation Need (SGCN)

Redondo Creek

Birds		Herptiles	Invertebrates	Mammals
American Bittern	Loggerhead Shrike	Jemez Mountains Salamander	Wrinkled Marshsnail	American Pika
Bank Swallow	Mexican Spotted Owl	Northern Leopard Frog		Gunnison’s Prairie Dog
Black Swift	Mountain Plover			New Mexico Meadow Jumping Mouse
Blue Grouse	Olive-sided Flycatcher			Spotted Bat
Brown-capped Rosy-finch	Peregrine Falcon			
Clark’s Nutcracker	Pinyon Jay			
Eared Grebe	Pygmy Nuthatch			
Gray Vireo	Red-headed Woodpecker			
Juniper Titmouse	Western Bluebird			
Lewis’s Woodpecker	Williamson’s Sapsucker			

Special Status Plants

STREAM	SPECIAL PLANT STATUS SPECIES
Rio Grande	Taos springsparsley, Ripley's milkvetch, clipped wild buckwheat
Rio Hondo	Taos springsparsley
Lake Fork	alpine larkspur
East Fork Jemez River	Sapello Canyon larkspur, hooded ladies'-tresses, giant helleborine orchid
San Antonio Creek	Sapello Canyon larkspur, hooded ladies'-tresses, giant helleborine orchid



Photo: David Conklin 2006



Photo: Robert Sivinski 2000

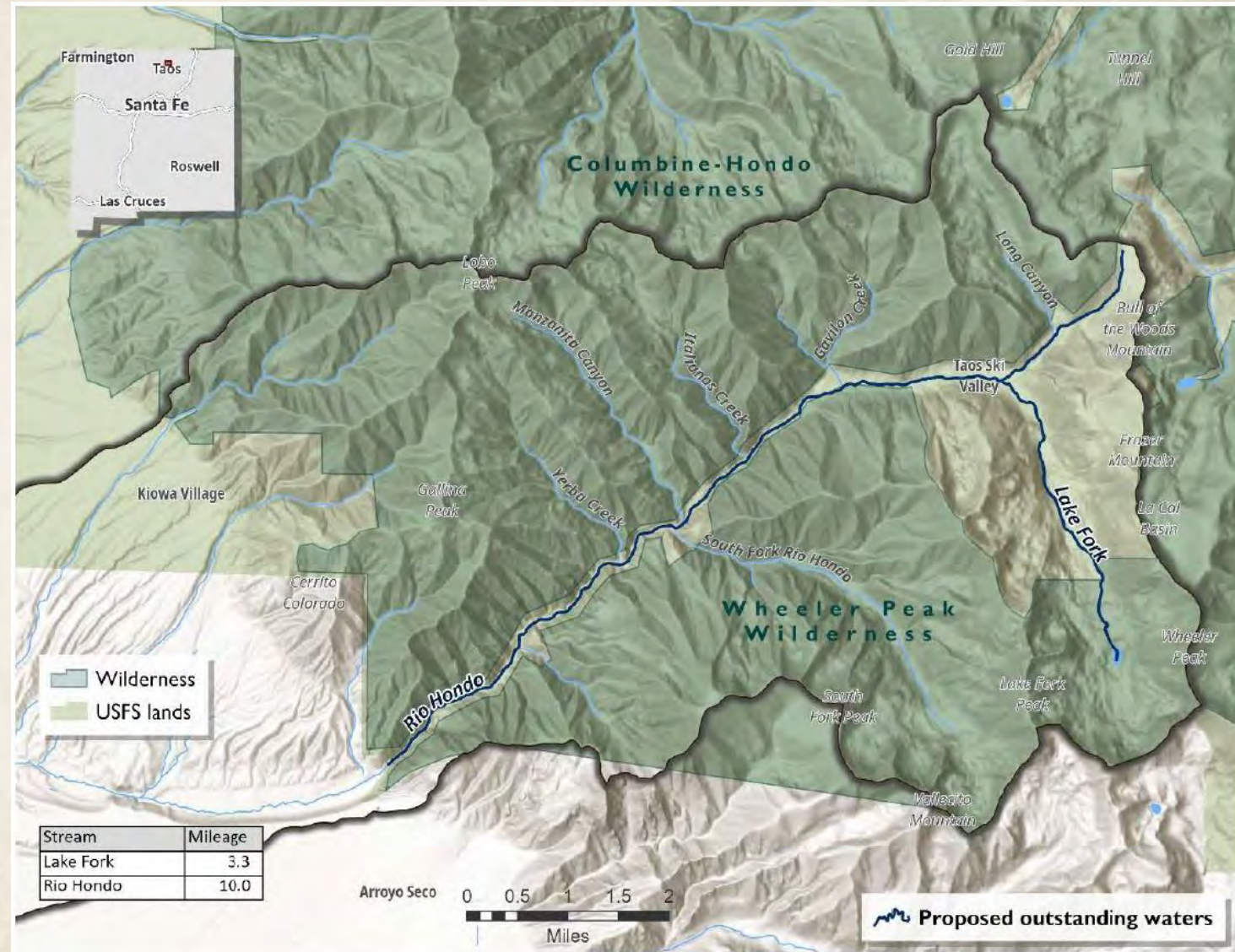


Photo: Russ Kleinman and Allan Campbell 2008

Nominated waters

Rio Hondo and Lake Fork

- High diversity
- Thriving trout fishery
- Important Plant Area



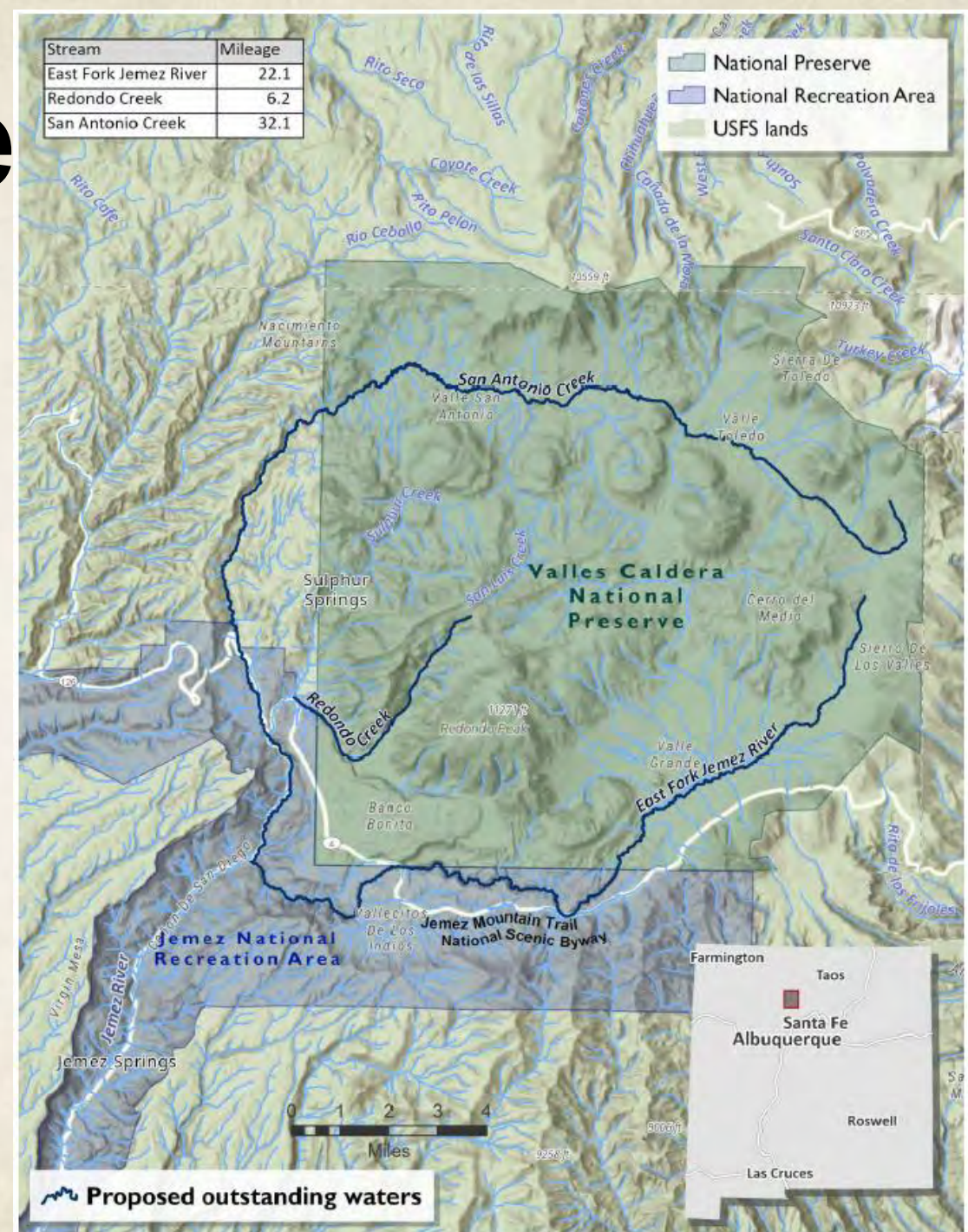
Nominated water

East Fork Jemez

San Antonio Creek

Redondo Creek

- Conservation Opportunity Area
- Important Bird Area
- Many range-restricted species
- Important Plant Area



Nominated waters

All waters qualify for designation because of both their exceptional recreational and ecological significance.



Photo: Karl Moffatt