



**NEW MEXICO ENVIRONMENT DEPARTMENT
GROUND WATER QUALITY BUREAU**



**PUBLIC INVOLVEMENT PLAN
(PIP)**

Facility Name: Tablazon Subdivision Wastewater Treatment Facility

Facility Location: Forest Road 11, ~2 miles northeast of Tijeras
Section 7, Township 10N, Range 6E

County: Bernalillo

Responsible Party: Joe Boyden
11896 N. Hwy 14, Tijeras, NM 87059

Agency: Ground Water Quality Bureau
Pollution Prevention Section

GWQB Action: Permitting - Renewal
DP-959

Bureau Contact: Andrew Romero, Environmental Scientist
(505) 827-0076
andrewc.romero@state.nm.us

EFFECTIVE DATE: September 27, 2018

REVISION DATE: N/A

/s/ Michelle Hunter

Michelle Hunter
Chief, Ground Water Quality Bureau

Element 1 – Public Involvement Plan (PIP) Overview

The New Mexico Environment Department (NMED or Department), Ground Water Quality Bureau (Bureau) has developed this PIP for the application for discharge permit renewal for the Tablazon Subdivision Wastewater Treatment Facility. The groundwater discharge permit for this facility is referred to as DP-959.

The purpose of this PIP is to plan for providing public participation opportunities and information that may be needed for the community to participate in the permitting process for this facility. This PIP identifies information about the community and resources needed by the Bureau to incorporate community participation activities into the decision-making process. This PIP is developed in accordance with the Department's *Public Participation Policy* (Policy 07-13 or Policy), and incorporates the requirements of the Policy, as well as applicable regulatory and statutory public participation requirements.

This PIP implements the “elements” set forth in the Policy. Those elements include:

1. An overview of the Public Involvement Plan for the community affected by the activity
2. Bureau contact names and contact information, specifically for Limited English Proficiency (LEP) language assistance services (e.g., translation, interpreters) or for disability accommodations
3. A summary of the regulatory public participation framework associated with discharge permits
4. A description of community/stakeholder groups based on results of a preliminary environmental justice (EJ) screening
5. Details about planned public outreach activities

In developing this PIP, community participation needs were assessed to ensure appropriate public outreach. This was accomplished by identifying whether there is a combination of environmental and demographic factors that may impact public participation (e.g., low income community, minority community, LEP individuals, linguistically isolated households).

Public involvement associated with discharge permits occurs at different stages and in different forms. Public involvement activities required by statute or regulation are mandatory and subject to statutory or regulatory deadlines. Mandatory public involvement activities and associated time requirements relevant to this PIP are noted in the *Table of Mandated Public Involvement Activities* at the end of this PIP.

The Bureau plans to conduct the public involvement activities related to the permitting process outlined in the *Table of Public Involvement Activities* below. The activity timeline and dates are tentative and subject to change.

Table of Public Involvement Activities

Activity	Date
Public Notice One (PN-1) See <i>Table of Mandated Public Involvement Activities</i> at the end of this PIP for details. All materials are being provided in English and Spanish, beyond regulatory requirement.	June, 2018
Placement of a hardcopy of the PIP in the local field office: NMED District 1 Office 121 Tijeras Ave. NE Albuquerque, NM 87102-3400 (505) 222-9500	September 2018
Notice of availability of draft permit (PN-2) See <i>Table of Mandated Public Involvement Activities</i> .	To be determined

All notices for upcoming meetings or hearings will include a statement that any person who requires assistance, an interpreter, or an auxiliary aid to participate in the process may contact a specifically identified Department person to request those services. Requested interpretation services during the meeting and accommodations or services for persons with disabilities will be arranged to the extent possible.

This PIP is a “living” document that may be amended for numerous reasons, including the consideration of public comments and feedback.

Element 2 – Bureau Contact Information

PIP Specific Contacts

The Bureau contact for this discharge permit is:

Andrew Romero, Environmental Scientist & Specialist
NMED Ground Water Quality Bureau
P.O. Box 5469
Santa Fe, New Mexico 87502-5469
(505) 827-0076
andrewc.romero@state.nm.us

Non-English Language Speaker Assistance

All public notices will contain a statement that non-English speakers may call the Bureau contact listed above and request language assistance in order to learn more about this permit or the permitting process. Arrangements may be made for document translation or interpretation related to the permitting process as necessary and as resources allow.

Individuals with Disabilities Assistance

All public notices will contain a statement that disabled individuals may call the Bureau contact listed above and request assistance needed to participate in activities associated with the permitting process.

The following numbers will be provided in public notices so that hearing-impaired callers can contact the Bureau and ask questions about the activity or proceeding: Toll-free numbers are available for TDD or TTY users to access the New Mexico Relay network (for deaf or hearing-impaired callers), 1-800-659-1779; TTY users: 1-800-659-8331.

Websites

Outreach materials and notices will include links to the following websites:

Ground Water Quality Bureau – <https://www.env.nm.gov/gwqb/>

New Mexico Environment Department - <https://www.env.nm.gov/>

Element 3 – Regulatory Framework for Public Participation Related to the Permitting Process

The public participation regulatory framework associated with the permitting process is identified in the *Table of Mandated Public Involvement Activities* at the end of this PIP. The Table identifies activities subject to statutory or regulatory deadlines, the associated regulatory requirements, and the associated dates or time periods.

Element 4 – Description of Community/Stakeholder Groups Based on the EJSCREEN

EJSCREEN Summary

To provide for adequate public participation opportunities and meaningful involvement of persons in the permitting process, the affected communities must first be identified, informed about proposed environmental actions affecting the community, and invited to share their comments and concerns. The EJSCREEN tool developed by the U.S. Environmental Protection Agency (EPA) helps identify communities that are low income, have minority populations, and have limited English proficiency that may benefit from a variety of approaches for notification and outreach communication. This information is used to help plan for the community's involvement in the public process for environmental activities or actions. In addition to the EJSCREEN results, the

Bureau may consider additional information such as the U.S. Census Bureau website or NMED's EJ Mapping Tool.

The Bureau considers the affected community to be those persons living within the geographic area depicted on the attached EJSCREEN document that includes the discharge site. The results of the EJSCREEN American Community Survey (ACS) Summary Report (attached to this PIP) are summarized in the table below.

EJSCREEN Results for the Affected Community

Total population	7,645
Total number of households	3,019
Percentage minority population	30%
Percentage Hispanic population	23%
Percentage of the population by race	Population reporting one race: Whites: 89% Asian: 1% Other Race: 2%
Total number of persons greater than the age of five who speak English "less than very well"	76
Percentage of persons greater than the age of five who speak English "less than very well"	1%
Total number of linguistically isolated households	28
Percentage of linguistically isolated households (Total number of linguistically isolated households ÷ total number of households X 100)	0.9%
Languages by percentage in linguistically isolated households	Spanish: 100%
Percent linguistically isolated population, New Mexico*:	5.4%
Per capita income	\$36,845
Per capita income, USA**	\$29,979

* U.S. Census Bureau. 2011-2015 American Community Survey 5-Year Estimates, Table S1602. Limited English Speaking Households. https://factfinder.census.gov/bkmk/table/1.0/en/ACS/15_5YR/S1602/0400000US35 (date of access: 7/26/2018).

** U.S. Census Bureau. 2015 American Community Survey 1-Year Estimates, Table S0201. Selected Population Profile in the United States. https://factfinder.census.gov/bkmk/table/1.0/en/ACS/15_1YR/S0201/0100000US (date of access: 7/26/2018).

The EJSCREEN results indicate that for the affected community the proportion of the population over the age of five that speaks English "less than very well" is less than five percent. Public

outreach will be conducted in accordance with the *Table of Mandated Public Involvement Activities* at the end of this PIP.

Element 5 – Detailed Actions and Outreach Activities with the Affected Public

Public involvement activities required by statute or regulation for this permitting action are listed in the *Table of Mandated Public Involvement Activities* at the end of this document.

Public Participation – Outreach Activities

The Bureau will conduct the following outreach activities during this permitting process:

- Placement of this PIP on the Bureau website and in nearby NMED field office
- Postal mailing and email notices
- Newspaper notices
- Notice posted on NMED website

Newspapers utilized in the notification process include:

- Statewide circulation: Albuquerque Journal
- Local circulation: Albuquerque Journal - Bernalillo County

Local, state, and federal government agencies, tribal entities, and land grant officials will be notified about the permitting process. A list of the agencies and officials notified can be provided upon request.

Indian Tribes, Pueblos and Nations will be notified about the permitting action through the contacts maintained by the Indian Affairs Department at the following URLs:

<http://www.iad.state.nm.us/apaches.html>

<http://www.iad.state.nm.us/navajo.html>

<http://www.iad.state.nm.us/pueblos.html>

Timelines and methods for submitting public comments are specified in the *Table of Mandated Public Involvement Activities*. Final discharge permit documents will be available from the Bureau's contact identified in Element 2 of this PIP.

Postal Mailing or E-Mailing of Notices to Persons on the Facility-Specific Mailing List

The Bureau solicits the names and contact information of interested parties with all public notices. The Bureau maintains those names on a Facility-Specific Mailing List and provides the individuals with information about regulatory activities for the facility. Individuals, organizations, and other interested parties are added to the mailing list as requested. All public notices will contain a statement directing interested individuals to contact the Bureau contact for this permit if they want to be added to the facility specific mailing list. The Department also maintains a more comprehensive list of persons requesting copies of all notices issued by the agency. Public notices will also contain a statement informing interested individuals that they can subscribe to this list by visiting <https://www.env.nm.gov/email-update-bulletins/>.

Other means of outreach such as fliers announcing public comment periods and/or public meetings or hearings may be posted in locations throughout the community (e.g., local businesses, schools, libraries) and on the Department's website, at the Bureau's discretion after consideration of public interest and input.

Attachments

The following documents are attached to this PIP:

- A copy of the EJSCREEN ACS Summary Report, and a map showing the area evaluated
- A copy of the public notice with facility and permit specific information in all published languages

Table of Mandated Public Involvement Activities

Activity	Dates
<p>Application Notice (PN-1): The first notice of the Bureau's receipt of the permit application – applicant's obligations at 20.6.2.3108.B – Bureau's obligations at 20.6.2.3108.E NMAC</p> <ul style="list-style-type: none"> • Newspaper ads (English and Spanish)- Applicant obligation • NMED website https://www.env.nm.gov/gwqb/public-notice/ • Notice to government agencies • Notice to interested parties 	<p>Within 30 days of the department deeming the application administratively complete</p>
<p>Permit Notice (PN-2): Notice to the public of the availability of a draft permit for a 30-day review and comment period – the notice will outline the process for requesting a public hearing – obligation at 20.6.2.3108.H NMAC</p> <ul style="list-style-type: none"> • NMED website https://www.env.nm.gov/gwqb/public-notice/ • Newspaper ads • Notification of interested parties • Notice to government agencies • Notice to Indian Tribes, Pueblos and Nations 	<p>Within 60 days of the department determining the application is technically complete and drafting a permit.</p>
<p>Public Hearing Notice (if required): Upon the Department's determination that there is substantial public interest in the permit – obligation at 20.6.2.3108.L NMAC. Notice includes information on how to participate in the hearing, and how to request an interpreter or auxiliary aid if needed.</p> <ul style="list-style-type: none"> • NMED website https://www.env.nm.gov/gwqb/public-notice/ • Newspapers • Notice to interested parties • Notice to government agencies • Notice to Indian Tribes, Pueblos and Nations 	<p>Notice of the hearing shall occur at least 30 days prior to the hearing.</p>

Location: User-specified point center at 35.100803, -106.336812

Ring (buffer): 4-mile radius

Description:

Summary of ACS Estimates		2011 - 2015	
Population		7,645	
Population Density (per sq. mile)		160	
Minority Population		2,272	
% Minority		30%	
Households		3,019	
Housing Units		3,449	
Housing Units Built Before 1950		116	
Per Capita Income		36,845	
Land Area (sq. miles) (Source: SF1)		47.75	
% Land Area		100%	
Water Area (sq. miles) (Source: SF1)		0.01	
% Water Area		0%	
	2011 - 2015 ACS Estimates	Percent	MOE (±)
Population by Race			
Total	7,645	100%	594
Population Reporting One Race	7,088	93%	900
White	6,796	89%	592
Black	37	0%	47
American Indian	9	0%	74
Asian	70	1%	55
Pacific Islander	0	0%	11
Some Other Race	175	2%	121
Population Reporting Two or More Races	557	7%	204
Total Hispanic Population	1,753	23%	331
Total Non-Hispanic Population	5,892		
White Alone	5,373	70%	508
Black Alone	33	0%	47
American Indian Alone	9	0%	74
Non-Hispanic Asian Alone	70	1%	55
Pacific Islander Alone	0	0%	11
Other Race Alone	31	0%	46
Two or More Races Alone	376	5%	160
Population by Sex			
Male	3,914	51%	423
Female	3,732	49%	321
Population by Age			
Age 0-4	292	4%	99
Age 0-17	1,394	18%	196
Age 18+	6,252	82%	380
Age 65+	1,299	17%	185

Data Note: Detail may not sum to totals due to rounding. Hispanic population can be of any race. N/A means not available.

Source: U.S. Census Bureau, American Community Survey (ACS) 2011 - 2015.

Location: User-specified point center at 35.100803, -106.336812

Ring (buffer): 4-mile radius

Description:

	2011 - 2015 ACS Estimates	Percent	MOE (±)
Population 25+ by Educational Attainment			
Total	5,765	100%	434
Less than 9th Grade	15	0%	25
9th - 12th Grade, No Diploma	136	2%	53
High School Graduate	1,049	18%	241
Some College, No Degree	1,839	32%	212
Associate Degree	486	8%	80
Bachelor's Degree or more	2,726	47%	226
Population Age 5+ Years by Ability to Speak English			
Total	7,353	100%	564
Speak only English	6,491	88%	495
Non-English at Home ¹⁺²⁺³⁺⁴	862	12%	161
¹ Speak English "very well"	787	11%	162
² Speak English "well"	76	1%	39
³ Speak English "not well"	0	0%	11
⁴ Speak English "not at all"	0	0%	11
³⁺⁴ Speak English "less than well"	0	0%	11
²⁺³⁺⁴ Speak English "less than very well"	76	1%	39
Linguistically Isolated Households*			
Total	28	100%	25
Speak Spanish	28	100%	23
Speak Other Indo-European Languages	0	0%	11
Speak Asian-Pacific Island Languages	0	0%	11
Speak Other Languages	0	0%	11
Households by Household Income			
Household Income Base	3,019	100%	171
< \$15,000	138	5%	85
\$15,000 - \$25,000	142	5%	69
\$25,000 - \$50,000	589	20%	120
\$50,000 - \$75,000	579	19%	135
\$75,000 +	1,570	52%	208
Occupied Housing Units by Tenure			
Total	3,019	100%	171
Owner Occupied	2,767	92%	169
Renter Occupied	252	8%	78
Employed Population Age 16+ Years			
Total	6,509	100%	529
In Labor Force	4,323	66%	408
Civilian Unemployed in Labor Force	248	4%	138
Not In Labor Force	2,186	34%	301

Data Note: Detail may not sum to totals due to rounding. Hispanic population can be of any race. N/A means not available. **Source:** U.S. Census Bureau, American Community Survey (ACS) 2011 - 2015.

*Households in which no one 14 and over speaks English "very well" or speaks English only.

EJSCREEN ACS Summary Report



Location: User-specified point center at 35.100803, -106.336812

Ring (buffer): 4-mile radius

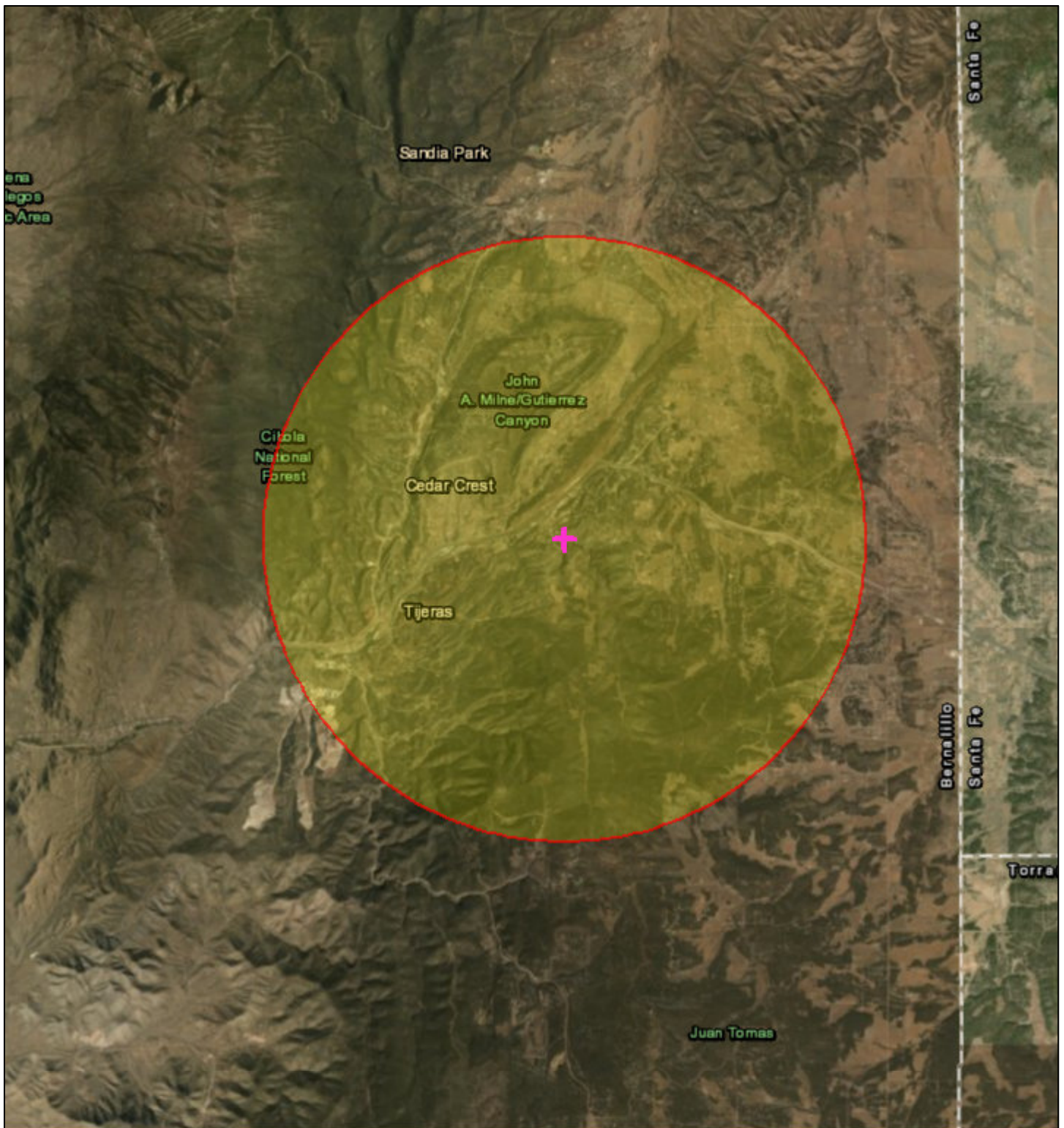
Description:

	2011 - 2015 ACS Estimates	Percent	MOE (±)
Population by Language Spoken at Home*			
Total (persons age 5 and above)	7,353	100%	564
English	N/A	N/A	N/A
Spanish	N/A	N/A	N/A
French	N/A	N/A	N/A
French Creole	N/A	N/A	N/A
Italian	N/A	N/A	N/A
Portuguese	N/A	N/A	N/A
German	N/A	N/A	N/A
Yiddish	N/A	N/A	N/A
Other West Germanic	N/A	N/A	N/A
Scandinavian	N/A	N/A	N/A
Greek	N/A	N/A	N/A
Russian	N/A	N/A	N/A
Polish	N/A	N/A	N/A
Serbo-Croatian	N/A	N/A	N/A
Other Slavic	N/A	N/A	N/A
Armenian	N/A	N/A	N/A
Persian	N/A	N/A	N/A
Gujarathi	N/A	N/A	N/A
Hindi	N/A	N/A	N/A
Urdu	N/A	N/A	N/A
Other Indic	N/A	N/A	N/A
Other Indo-European	N/A	N/A	N/A
Chinese	N/A	N/A	N/A
Japanese	N/A	N/A	N/A
Korean	N/A	N/A	N/A
Mon-Khmer, Cambodian	N/A	N/A	N/A
Hmong	N/A	N/A	N/A
Thai	N/A	N/A	N/A
Laotian	N/A	N/A	N/A
Vietnamese	N/A	N/A	N/A
Other Asian	N/A	N/A	N/A
Tagalog	N/A	N/A	N/A
Other Pacific Island	N/A	N/A	N/A
Navajo	N/A	N/A	N/A
Other Native American	N/A	N/A	N/A
Hungarian	N/A	N/A	N/A
Arabic	N/A	N/A	N/A
Hebrew	N/A	N/A	N/A
African	N/A	N/A	N/A
Other and non-specified	N/A	N/A	N/A
Total Non-English	N/A	N/A	N/A

Data Note: Detail may not sum to totals due to rounding. Hispanic population can be of any race. N/A means not available. **Source:** U.S. Census Bureau, American Community Survey (ACS) 2011 - 2015.



*Population by Language Spoken at Home is available at the census tract summary level and up.

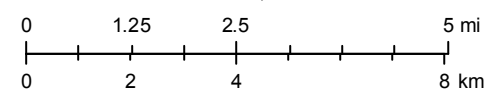
Tablazon Subdivision Wastewater Treatment Facility (DP-959)



July 12, 2018

1:144,448

-  Buffer Area
-  Digitized Point



Esri, HERE, Garmin, © OpenStreetMap contributors, and the GIS user community
Source: Esri, DigitalGlobe, GeoEye, Earthstar Geographics, CNES/Airbus DS, USDA, USGS, AeroGRID, IGN, and the GIS User Community



SUSANA MARTINEZ
Governor

JOHN A. SANCHEZ
Lieutenant Governor

**NEW MEXICO
ENVIRONMENT DEPARTMENT**

Ground Water Quality Bureau

**1190 South St. Francis Drive (87505)
P.O. Box 5469, Santa Fe, New Mexico 87502-5469**

Phone (505) 827-2900 Fax (505) 827-2965

www.env.nm.gov



BUTCH TONGATE
Cabinet Secretary

J.C. BORREGO
Deputy Secretary

June 22, 2018

Re: Discharge Permit Applications Submitted for Review

Notice is hereby given pursuant to 20.6.2.3108 NMAC, the following Groundwater Discharge Permit applications have been submitted to the New Mexico Environment Department (NMED) for review.

Provided the applicant has met applicable requirements, the New Mexico Environment Department (NMED) will propose for approval a Discharge Permit containing limitations, monitoring requirements, and other conditions intended to protect groundwater quality for present and potential future use. Information in this public notice was provided by the applicants and will be verified by NMED during the permit application review process. NMED will accept comments and statements of interest regarding applications and will create facility-specific mailing lists for persons who wish to receive future notices. Questions, comments or statements of interest should be directed to the NMED permit contact at (505) 827-2900 or at the following address: Ground Water Quality Bureau, PO Box 5469, Santa Fe, NM 87502-5469.

NMED does not discriminate on the basis of race, color, national origin, disability, age or sex in the administration of its programs or activities, as required by applicable laws and regulations. NMED is responsible for coordination of compliance efforts and receipt of inquiries concerning non-discrimination requirements implemented by 40 C.F.R. Part 7, including Title VI of the Civil Rights Act of 1964, as amended; Section 504 of the Rehabilitation Act of 1973; the Age Discrimination Act of 1975, Title IX of the Education Amendments of 1972, and Section 13 of the Federal Water Pollution Control Act Amendments of 1972. If you have any questions about this notice or any of NMED's non-discrimination programs, policies or procedures, you may contact: Kristine Pintado, Non-Discrimination Coordinator, New Mexico Environment Department, 1190 St. Francis Dr., Suite N4050, P.O. Box 5469, Santa Fe, NM 87502, (505) 827-2855, nd.coordinator@state.nm.us. If you believe that you have been discriminated against with respect to a NMED program or activity, you may contact the Non-Discrimination Coordinator identified above or visit our website at <https://www.env.nm.gov/non-employee-discrimination-complaint-page/> to learn how and where to file a complaint of discrimination.

Sincerely,

Lochlin Farrell
Ground Water Quality Bureau



<u>Discharge Permit #</u> 959	<u>Facility</u> Tablazon Subdivision Wastewater Treatment Facility		<u>Applicant</u> Joe Boyden President Tablazon Wetlands HOA 11896 N. Hwy 14 Tijeras, NM 87059	<u>NMED Permit Contact</u> Andrew Romero AndrewC.Romero@state.nm.us 505-827-0076
	<u>Closest City</u> Tijeras	<u>County</u> Bernalillo		
Notice: DP-959, Tablazon Subdivision Wastewater Treatment Facility: Tablazon Wetlands Home Owners Association proposes to renew the Discharge Permit for the discharge of up to 9,000 gallons per day of domestic wastewater to a package treatment plant and constructed subsurface flow wetland cells with disposal to a leachfield. Potential contaminants from this type of discharge include nitrogen compounds. The facility is located approximately two miles northeast of Tijeras on Forest Rd., in Section 7, T10N, R06E, Bernalillo County. Groundwater most likely to be affected is at a depth of approximately 53 feet and has a total dissolved solids concentration of approximately 370 milligrams per liter.				

<u>Discharge Permit #</u> 683	<u>Facility</u> Sideline Dairy		<u>Applicant</u> David Hoekstra Sideline Dairy 185 East Calusa Rd. Dexter, NM 88230	<u>NMED Permit Contact</u> Marc Bonem Marc.Bonem@state.nm.us 505-827-2791
	<u>Closest City</u> Lake Arthur	<u>County</u> Chaves		
Notice: Sideline Dairy proposes to renew the Discharge Permit for the discharge of up to 450,000 gallons per day from the production area of a dairy facility. Potential contaminants associated with this type of discharge include nitrogen compounds. The facility is located at 160 E. Jackson Road, approximately 3 miles north southwest of Lake Arthur, in Sections 25, 26, 35, and 36, T15S, R25E, and Section 31, T15S, R26E, Chaves County. Groundwater most likely to be affected is at a depth of approximately 18-41 feet and had a pre-discharge total dissolved solids concentration of 3,000 milligrams per liter.				

<u>Discharge Permit #</u> 695	<u>Facility</u> City of Grants Wastewater Treatment Plant		<u>Applicant</u> Laura Jaramillo City Manager City of Grants 600 W. Santa Fe Ave. Grants, NM 87020	<u>NMED Permit Contact</u> Brian Schall Brian.Schall@state.nm.us 505-476-3648
	<u>Closest City</u> Grants	<u>County</u> Cibola		
Notice: DP-695, City of Grants Wastewater Treatment Plant: The City of Grants proposes to modify the Discharge Permit for the discharge of up to 1,500,000 gallons per day of domestic wastewater from a municipality to a treatment, reuse, and disposal system. The modification consists of the replacement of a previous biosolid plan to allow a one-time application of biosolids to alfalfa fields located on private land. Potential contaminants from this type of discharge include nitrogen compounds. The facility is located at 5001 George Hanosh Blvd, Grants, in Sections 32 and 33, T11N, R09W, Cibola County. The land application area is located in Sections 23, 25, and 26, T12N, R11W, Cibola County. Groundwater most likely to be affected is at a depth of approximately 8 feet below ground surface (BGS) that has a total dissolved solids concentration ranging from approximately 448 to 10,000 milligrams per liter and a deeper aquifer at a depth of approximately 94 feet BGS that has a total dissolved solids concentration of approximately 450 milligrams per liter.				



SUSANA MARTINEZ
Governor

JOHN A. SANCHEZ
Lieutenant Governor

**NEW MEXICO
ENVIRONMENT DEPARTMENT**

Ground Water Quality Bureau

**1190 South St. Francis Drive (87505)
P.O. Box 5469, Santa Fe, New Mexico 87502-5469**

Phone (505) 827-2900 Fax (505) 827-2965

www.env.nm.gov



BUTCH TONGATE
Cabinet Secretary

J.C. BORREGO
Deputy Secretary

22 de junio de 2018

Solicitudes de Permiso de Descarga Enviadas para Revisión

Por la presente se da aviso de conformidad con 20.6.2.3108 NMAC, las siguientes solicitudes de Permiso de Descarga de Aguas Subterráneas han sido enviadas al Departamento de Medio Ambiente de Nuevo México (NMED, por su sigla en inglés) para su revisión.

Siempre que el solicitante cumpla con los requisitos aplicables, el Departamento de Medio Ambiente de Nuevo México (NMED) propondrá para su aprobación un Permiso de Descarga que contiene limitaciones, requisitos de monitoreo, y otras condiciones destinadas a proteger la calidad del agua subterránea para su uso actual y potencial uso en el futuro. La información en esta notificación pública fue provista por los solicitantes y será verificada por NMED durante el proceso de revisión de solicitudes de permiso. El NMED aceptará comentarios y declaraciones de interés con respecto a las solicitudes y creará listas de correo específicas de las instalaciones para las personas que deseen recibir avisos en el futuro. Las preguntas, comentarios o declaraciones de interés deben dirigirse a la persona de contacto para permisos de NMED, llamando al (505) 827-2900 o a la siguiente dirección: Ground Water Quality Bureau, PO Box 5469, Santa Fe, NM 87502-5469.

El Departamento del Medio Ambiente de Nuevo México (NMED, por su sigla en inglés) no discrimina por motivos de raza, color, origen nacional, discapacidad, edad o sexo en la administración de sus programas o actividades, según lo exigido por las leyes y los reglamentos correspondientes. El NMED es responsable de la coordinación de esfuerzos para el cumplimiento de las reglas y la recepción de indagaciones relativas a los requisitos de no discriminación implementados por 40 C.F.R. Parte 7, que incluye el Título VI de la Ley de Derechos Civiles de 1964, como fuera enmendado; la Sección 504 de la Ley de Rehabilitación de 1973; la Ley de Discriminación por Edad de 1975; el Título IX de las Enmiendas de Educación de 1972; y la Sección 13 de las Enmiendas a la Ley Federal de Control de la Contaminación del Agua de 1972. Si tiene preguntas sobre este aviso o sobre cualquier programa de no discriminación, norma o procedimiento de NMED, puede comunicarse con la Coordinadora de No Discriminación: Kristine Pintado, Non-Discrimination Coordinator, New Mexico Environment Department, 1190 St. Francis Dr., Suite N4050, P.O. Box 5469, Santa Fe, NM 87502, (505) 827-2855, nd.coordinator@state.nm.us. Si piensa que ha sido discriminado con respecto a un programa o actividad de NMED, puede comunicarse con la Coordinadora de No Discriminación antes indicada o visitar nuestro sitio web en <https://www.env.nm.gov/non-employee-discrimination-complaint-page/> para saber cómo y dónde presentar una queja por discriminación.

Sinceramente,

Lochlin Farrell
Oficina para el Control de la Calidad de las Aguas Subterráneas



<u>Permiso de Descarga #</u> 959	<u>Instalaciones</u> Tablazon Subdivision Wastewater Treatment Facility		<u>Solicitante</u> Joe Boyden President Tablazon Wetlands HOA 11896 N. Hwy 14 Tijeras, NM 87059	<u>Contacto para el permiso del NMED</u> Andrew Romero AndrewC.Romero@state.nm.us 505-827-0076
	<u>Ciudad más cercana</u> Tijeras	<u>Condado</u> Bernalillo		

Aviso: DP-959, Planta de Tratamiento de Aguas Residuales de la Subdivisión Tablazón: Tablazon Wetlands Home Owners Association propone renovar el Permiso de Descarga para la descarga de hasta 9.000 galones por día de aguas residuales domésticas a una planta paquete de tratamiento y células de humedales construidas de flujo subsuperficial con eliminación a un leachfield. Los contaminantes potenciales de este tipo de descarga incluyen compuestos de nitrógeno. La planta está ubicada aproximadamente a dos millas al noreste de Tijeras en Forest Rd., en la Sección 7, T10N, R06E, condado de Bernalillo. El agua subterránea que tiene más probabilidad de verse afectada se encuentra a una profundidad de aproximadamente 53 pies y tiene una concentración total de sólidos disueltos de 370 miligramos por litro.

<u>Permiso de Descarga #</u> 683	<u>Instalaciones</u> Sideline Dairy		<u>Solicitante</u> David Hoekstra Sideline Dairy 185 East Calusa Rd. Dexter, NM 88230	<u>Contacto para el permiso del NMED</u> Marc Bonem Marc.Bonem@state.nm.us 505-827-2791
	<u>Ciudad más cercana</u> Lake Arthur	<u>Condado</u> Chaves		

Aviso: Sideline Dairy propone renovar el Permiso de Descarga para la descarga de hasta 450,000 galones por día desde el área de producción de una instalación lechera. Los posibles contaminantes asociados con este tipo de descarga incluyen compuestos de nitrógeno. La instalación está ubicada en 160 E. Jackson Road, aproximadamente a 3 millas al norte sur oeste de Lake Arthur, en la sección 25, 26, 35, 36, T15S, R25E, e sección 31, T15S, R26E del condado de Chaves. El agua subterránea que tiene más probabilidad de verse afectada se encuentra a una profundidad de aproximadamente 18-41 pies y tenía una concentración de sólidos disueltos totales antes del vertido de 3,000 miligramos por litro.

<u>Permiso de Descarga #</u> 695	<u>Instalaciones</u> City of Grants Wastewater Treatment Plant		<u>Solicitante</u> Laura Jaramillo City Manager City of Grants 600 W. Santa Fe Ave. Grants, NM 87020	<u>Contacto para el permiso del NMED</u> Brian Schall Brian.Schall@state.nm.us 505-476-3648
	<u>Ciudad más cercana</u> Grants	<u>Condado</u> Cibola		

Aviso: DP-695, Planta de Tratamiento de Aguas Residuales de la ciudad de Grants: la ciudad de Grants propone modificar el Permiso de Descarga para la descarga de hasta 1.500.000 galones por día de aguas residuales domésticas de un municipio a un sistema de tratamiento, reutilización y eliminación. La modificación consiste en la sustitución de un plan biosólido anterior para permitir una aplicación única de biosólidos a campos de alfalfa localizados en terrenos privados. Los contaminantes potenciales de este tipo de descarga incluyen compuestos de nitrógeno. La planta está ubicada en 5001 George Hanosh Blvd, Grants, en las Secciones 32 y 33, T11N, R09W, condado de Cibola. El área de solicitud de tierras se encuentra en las Secciones 23, 25 y 26, T12N, R11W, condado de Cibola. El agua subterránea que tiene más probabilidad de verse afectada se encuentra a una profundidad de aproximadamente 8 pies bajo la superficie del suelo (BGS) que tiene una concentración total de sólidos disueltos aproximadamente entre 448 y 10.000 miligramos por litro y un acuífero más profundo a una profundidad de aproximadamente 94 pies BGS que tiene una concentración total de sólidos disueltos 450 miligramos por litro.