



**NEW MEXICO ENVIRONMENT DEPARTMENT
GROUND WATER QUALITY BUREAU**



**PUBLIC INVOLVEMENT PLAN
(PIP)**

Facility Name: Mountain View Groundwater Restoration Nitrate Plume

Facility Location: South Valley. The facility is bound to the north by Murry Road SE (extended east to I-25 and west to 2nd Street SW), to the west by 2nd Street SW, to the south by Desert Road and Bobby Foster Road, and to the east by Broadway Blvd. SE and I-25.
Sections 17, 18, 19, 20, Township 9N, Range 3E

County: Bernalillo County

Responsible Party: INTERA Incorporated, Agent
NM Office of the Natural Resources Trustee
6000 Uptown Blvd NE, Suite 220
Albuquerque, NM 87110

Agency: Ground Water Quality Bureau
Pollution Prevention Section

GWQB Action: Permitting - Renewal
DP-1179

Bureau Contact: Avery Olshefski, Geoscientist
(505) 827-2909
Avery.Olshefski@state.nm.us

EFFECTIVE DATE: October 2, 2018

REVISION DATE: N/A

/s/ Michelle Hunter

Michelle Hunter
Chief, Ground Water Quality Bureau

Element 1 – Public Involvement Plan (PIP) Overview

The New Mexico Environment Department (NMED or Department), Ground Water Quality Bureau (Bureau) has developed this PIP for the application for discharge permit renewal for the Mountain View Groundwater Restoration Nitrate Plume. The groundwater discharge permit for this facility is referred to as DP-1179.

The purpose of this PIP is to plan for providing public participation opportunities and information that may be needed for the community to participate in the permitting process for this facility. This PIP identifies information about the community and resources needed by the Bureau to incorporate community participation activities into the decision-making process. This PIP is developed in accordance with the Department's *Public Participation Policy* (Policy 07-13 or Policy), and incorporates the requirements of the Policy, as well as applicable regulatory and statutory public participation requirements.

This PIP implements the “elements” set forth in the Policy. Those elements include:

1. An overview of the Public Involvement Plan for the community affected by the activity
2. Bureau contact names and contact information, specifically for Limited English Proficiency (LEP) language assistance services (e.g., translation, interpreters) or for disability accommodations
3. A summary of the regulatory public participation framework associated with discharge permits
4. A description of community/stakeholder groups based on results of a preliminary environmental justice (EJ) screening
5. Details about planned public outreach activities

In developing this PIP, community participation needs were assessed to ensure appropriate public outreach. This was accomplished by identifying whether there is a combination of environmental and demographic factors that may impact public participation (e.g., low income community, minority community, LEP individuals, linguistically isolated households). Because the community located near the Mountain View Groundwater Restoration Nitrate Plume includes a significant percentage of Spanish speakers, the Bureau will provide appropriate information in both English and Spanish.

Public involvement associated with discharge permits occurs at different stages and in different forms. Public involvement activities required by statute or regulation are mandatory and subject to statutory or regulatory deadlines. Mandatory public involvement activities and associated time requirements relevant to this PIP are noted in the *Table of Mandated Public Involvement Activities* at the end of this PIP.

The Bureau plans to conduct the public involvement activities related to the permitting process outlined in the *Table of Public Involvement Activities* below. The activity timeline and dates are tentative and subject to change.

Table of Public Involvement Activities

Activity	Date
Public Notice One (PN-1) <i>See Table of Mandated Public Involvement Activities at the end of this PIP for details.</i>	August 2018
Placement of a hardcopy of the PIP in the local field office: NMED District 1 Office 121 Tijeras Ave. NE STE 1000 Albuquerque, NM 87102-3400 Phone (505) 222-9500 Fax (505) 222-9510	October 2018
Notice of availability of draft permit (PN-2) <i>See Table of Mandated Public Involvement Activities.</i>	Within 60 days of determining the application is technically complete. Date to be determined.

All notices for upcoming meetings or hearings will include a statement that any person who requires assistance, an interpreter, or an auxiliary aid to participate in the process may contact a specifically identified Department person to request those services. Requested interpretation services during the meeting and accommodations or services for persons with disabilities will be arranged to the extent possible.

This PIP is a “living” document that may be amended for numerous reasons, including the consideration of public comments and feedback.

Element 2 – Bureau Contact Information

PIP Specific Contacts

The Bureau contact for this discharge permit is:

Avery Olshefski, Geoscientist
 NMED Ground Water Quality Bureau
 P.O. Box 5469
 Santa Fe, New Mexico 87502-5469
 (505) 827-2909
 Avery.Olshefski@state.nm.us

Non-English Language Speaker Assistance

All public notices will contain a statement that non-English speakers may call the Bureau contact listed above and request language assistance in order to learn more about this permit or the permitting process. Arrangements may be made for document translation or interpretation related to the permitting process as necessary and as resources allow.

Individuals with Disabilities Assistance

All public notices will contain a statement that disabled individuals may call the Bureau contact listed above and request assistance needed to participate in activities associated with the permitting process.

The following numbers will be provided in public notices so that hearing-impaired callers can contact the Bureau and ask questions about the activity or proceeding: Toll-free numbers are available for TDD or TTY users to access the New Mexico Relay network (for deaf or hearing-impaired callers), 1-800-659-1779; TTY users: 1-800-659-8331.

Websites

Outreach materials and notices will include links to the following websites:

Ground Water Quality Bureau – <https://www.env.nm.gov/gwqb/>

New Mexico Environment Department - <https://www.env.nm.gov/>

Element 3 – Regulatory Framework for Public Participation Related to the Permitting Process

The public participation regulatory framework associated with the permitting process is identified in the *Table of Mandated Public Involvement Activities* at the end of this PIP. The Table identifies activities subject to statutory or regulatory deadlines, the associated regulatory requirements, and the associated dates or time periods.

Element 4 – Description of Community/Stakeholder Groups Based on the EJSCREEN

EJSCREEN Summary

To provide for adequate public participation opportunities and meaningful involvement of persons in the permitting process, the affected communities must first be identified, informed about proposed environmental actions affecting the community, and invited to share their comments and concerns. The EJSCREEN tool developed by the U.S. Environmental Protection Agency (EPA) helps identify communities that are low income, have minority populations, and have limited English proficiency that may benefit from a variety of approaches for notification and outreach communication. This information is used to help plan for the community's involvement in the

public process for environmental activities or actions. In addition to the EJSCREEN results, the Bureau may consider additional information such as the U.S. Census Bureau website or NMED's EJ Mapping Tool.

The Bureau considers the affected community to be those persons living within a 1-mile radius of the discharge site. The results of the EJSCREEN American Community Survey (ACS) Summary Report (attached to this PIP) are summarized in the table below.

EJSCREEN Results for the Affected Community

Total population	3,586
Total number of households	1,081
Percentage minority population	82%
Percentage Hispanic population	78%
Percentage of the population by race	Population reporting one race: White: 74% Black: 2% American Indian: 1% Asian: 0% Pacific Islander: 0% Some Other Race: 20%
Total number of persons greater than the age of five who speak English "less than very well"	764
Percentage of persons greater than the age of five who speak English "less than very well"	23%
Total number of linguistically isolated households	138
Percentage of linguistically isolated households (Total number of linguistically isolated households ÷ total number of households X 100)	13%
Languages by percentage in linguistically isolated households	Spanish:95% Other Indo-European languages:5%
Percent linguistically isolated population, New Mexico*:	5.4%
Per capita income	\$18,850
Per capita income, USA**	\$29,979

* U.S. Census Bureau. 2011-2015 American Community Survey 5-Year Estimates, Table S1602. Limited English Speaking Households. https://factfinder.census.gov/bkmk/table/1.0/en/ACS/15_5YR/S1602/0400000US35 (date of access: 7/26/2018).

** U.S. Census Bureau. 2015 American Community Survey 1-Year Estimates, Table S0201. Selected Population Profile in the United States. https://factfinder.census.gov/bkmk/table/1.0/en/ACS/15_1YR/S0201/0100000US (date of access: 7/26/2018).

The EJSCREEN results indicate that for the affected community the proportion of the population with limited English proficiency (LEP) is significant. The Bureau has therefore performed a LEP assessment for the community and attaches that assessment to this PIP.

Because the affected community has a significant percentage of persons with difficulties communicating in English, the Bureau will consider the language and communication needs of this community when conducting public outreach and participation activities. To accomplish this the Bureau will provide the same information in Spanish as in English in public comment notices, public meeting notices, and other announcements (e.g., radio broadcasts, brochures, signs, postcards) and will strive to make public participation efforts as inclusive as possible within the Bureau's budget and time limitations. See Element 5 for more specifics on the public outreach and participation activities.

Element 5 – Detailed Actions and Outreach Activities with the Affected Public

Public involvement activities required by statute or regulation for this permitting action are listed in the *Table of Mandated Public Involvement Activities* at the end of this document.

Public Participation – Outreach Activities

The Bureau will conduct the following outreach activities during this permitting process:

- Placement of this PIP on the Bureau website and in nearby NMED field office
- Postal mailing and email notices
- Newspaper notices
- Notice posted on NMED website

Newspapers utilized in the notification process include:

- Statewide circulation (English): Albuquerque Journal
- Local circulation (English and Spanish): Albuquerque Journal

Local, state, and federal government agencies, tribal entities, and land grant officials will be notified about the permitting process. A list of the agencies and officials notified can be provided upon request.

Indian Tribes, Pueblos and Nations will be notified about the permitting action through the contacts maintained by the Indian Affairs Department at the following URLs:

<http://www.iad.state.nm.us/apaches.html>

<http://www.iad.state.nm.us/navajo.html>

<http://www.iad.state.nm.us/pueblos.html>

In addition, contacts at Isleta Pueblo will receive notification about the permitting action due to their interest in this permit and their close proximity to the affected community.

Timelines and methods for submitting public comments are specified in the *Table of Mandated Public Involvement Activities*. Final discharge permit documents will be available from the Bureau's contact identified in Element 2 of this PIP.

Postal Mailing or E-Mailing of Notices to Persons on the Facility-Specific Mailing List

The Bureau solicits the names and contact information of interested parties with all public notices. The Bureau maintains those names on a Facility-Specific Mailing List and provides the individuals with information about regulatory activities for the facility. Individuals, organizations, and other interested parties are added to the mailing list as requested. All public notices will contain a statement directing interested individuals to contact the Bureau contact for this permit if they want to be added to the facility specific mailing list. The Department also maintains a more comprehensive list of persons requesting copies of all notices issued by the agency. Public notices will also contain a statement informing interested individuals that they can subscribe to this list by visiting <https://www.env.nm.gov/email-update-bulletins/>.

Other means of outreach such as fliers announcing public comment periods and/or public meetings or hearings may be posted in locations throughout the community (e.g., local businesses, schools, libraries) and on the Department's website, at the Bureau's discretion after consideration of public interest and input.

Attachments

The following documents are attached to this PIP:

- LEP Assessment
- A copy of the EJSCREEN ACS Summary Report, and a map showing the area evaluated

Table of Mandated Public Involvement Activities

Activity	Dates
<p>Application Notice (PN-1): The first notice of the Bureau's receipt of the permit application – applicant's obligations at 20.6.2.3108.B – Bureau's obligations at 20.6.2.3108.E NMAC</p> <ul style="list-style-type: none"> • Newspaper ads (English and Spanish)- Applicant obligation • NMED website https://www.env.nm.gov/gwqb/public-notice/ • Notice to government agencies • Notice to interested parties 	<p>Within 30 days of the department deeming the application administratively complete</p>
<p>Permit Notice (PN-2): Notice to the public of the availability of a draft permit for a 30-day review and comment period – the notice will outline the process for requesting a public hearing – obligation at 20.6.2.3108.H NMAC</p> <ul style="list-style-type: none"> • NMED website https://www.env.nm.gov/gwqb/public-notice/ • Newspaper ads • Notification of interested parties • Notice to government agencies • Notice to Indian Tribes, Pueblos and Nations 	<p>Within 60 days of the department determining the application is technically complete and drafting a permit.</p>
<p>Public Hearing Notice (if required): Upon the Department's determination that there is substantial public interest in the permit – obligation at 20.6.2.3108.L NMAC. Notice includes information on how to participate in the hearing, and how to request an interpreter or auxiliary aid if needed.</p> <ul style="list-style-type: none"> • NMED website https://www.env.nm.gov/gwqb/public-notice/ • Newspapers • Notice to interested parties • Notice to government agencies • Notice to Indian Tribes, Pueblos and Nations 	<p>Notice of the hearing shall occur at least 30 days prior to the hearing.</p>

Limited English Proficiency (LEP) Assessment

Facility: Mountain View Groundwater Restoration Nitrate Plume, DP-1179

Factor 1: The Number and Proportion of LEP Individuals Eligible to be Served or Likely to be Encountered in Community of Concern

See Public Involvement Plan (PIP), Table of EJSCREEN Results for the Affected Community.

Conclusions:

1. The number of LEP individuals (persons over the age of 5 who speak English “less than very well” in the affected community) is 764.
2. The percentage of LEP individuals in the affected community is 23%.
3. The percentage of linguistically isolated households is 13%, which is significantly greater than the statewide average of 5.4%.
4. Spanish is the predominant non-English language spoken by LEP persons.
5. Historical participation: The Bureau maintains a facility-specific mailing list. The current mailing list for the facility includes 4 persons or entities, including Isleta Pueblo. A review of the administrative record for this facility indicates limited public interest/participation overall during the past 10 years. The review found no record of participation by the LEP community.

Factor 2: Frequency with which LEP Individuals Might Come in Contact with the Program

Contact with the discharge permitting process primarily occurs when a permit application is under review. The GWQB provides notice to the public and encourages participation. Individuals may participate by requesting information, submitting comments on draft permits, requesting hearings, and taking part in hearings. Some permits generate considerable public interest, but participation is low for most permits. Historical participation in permitting activities for this facility is summarized under Factor 1.

Conclusion:

Although LEP participation has been limited, given the demographics of the area and the considerable overall public interest in this facility, the Bureau considers the potential for LEP contact with the permitting process to be “occasional”.

Factor 3: Nature and Importance of the Activity or Service Provided by the Program

The permitting activity is deemed by the GWQB to be “important” to NMED, the impacted community, and the State of New Mexico. The permitting activity is important to NMED because the permit establishes site-specific requirements that must be met to ensure protection of public health and groundwater quality and provides a means to enforce those requirements. The permitting activity is important to the impacted community because poorly-operated waste treatment facilities have the potential to pose a public nuisance and adversely affect the quality of life of people living in the vicinity of the facility. The permitting activity is important to the State of New Mexico because establishment of effective permits ensures that discharges will not impact the State's limited

groundwater resources and that waste disposal is conducted in a consistent manner throughout the State.

Conclusion:

The GWQB considers the permitting activity “important” to NMED, to the state as a whole, and to the impacted community.

Factor 4: Resources Available to NMED for LEP Services and Associated Costs

For outreach to LEP communities associated with this permit action, NMED employs an in-house Spanish translator/interpreter: NMED contracts with a certified translator and utilizes a phone interpretation service to assist during direct communication between LEP individuals and NMED staff. The costs of newspaper publication of public notice in Spanish and of interpretive services for a public meeting or hearing are being incorporated into the Bureau’s budget, to the extent possible. Fees collected from the permittee in accordance with the schedule at 20.6.2.3114 NMAC are not sufficient to cover these costs.

Conclusion:

The Bureau can accommodate the costs of the LEP services identified in this plan. If additional services are requested, the budgetary implications will be reviewed.

LEP Services Plan:

The Bureau plans to:

1. Translate the Public Notice Two and any subsequent public notices into Spanish and publish in a paper serving the local community..
2. Provide interpretive services at any public meeting or public hearing, if requested.
3. Interact with members of the LEP community using certified interpreters, when needed.

The Bureau will consider requests from members of the affected community for additional LEP services.

Location: User-specified polygonal location
 Ring (buffer): 1-mile radius
 Description: Mountain View Remediation Project

Summary of ACS Estimates		2011 - 2015	
Population		3,586	
Population Density (per sq. mile)		462	
Minority Population		2,931	
% Minority		82%	
Households		1,081	
Housing Units		1,186	
Housing Units Built Before 1950		51	
Per Capita Income		18,850	
Land Area (sq. miles) (Source: SF1)		7.75	
% Land Area		97%	
Water Area (sq. miles) (Source: SF1)		0.22	
% Water Area		3%	
	2011 - 2015 ACS Estimates	Percent	MOE (±)
Population by Race			
Total	3,586	100%	478
Population Reporting One Race	3,510	98%	958
White	2,644	74%	392
Black	88	2%	76
American Indian	46	1%	53
Asian	11	0%	52
Pacific Islander	0	0%	11
Some Other Race	721	20%	374
Population Reporting Two or More Races	75	2%	50
Total Hispanic Population	2,794	78%	450
Total Non-Hispanic Population	792		
White Alone	654	18%	199
Black Alone	78	2%	76
American Indian Alone	20	1%	36
Non-Hispanic Asian Alone	11	0%	52
Pacific Islander Alone	0	0%	11
Other Race Alone	0	0%	11
Two or More Races Alone	29	1%	32
Population by Sex			
Male	1,837	51%	296
Female	1,748	49%	300
Population by Age			
Age 0-4	242	7%	103
Age 0-17	921	26%	190
Age 18+	2,665	74%	297
Age 65+	420	12%	144

Data Note: Detail may not sum to totals due to rounding. Hispanic population can be of any race. N/A means not available.

Source: U.S. Census Bureau, American Community Survey (ACS) 2011 - 2015.

Location: User-specified polygonal location

Ring (buffer): 1-mile radius

Description: Mountain View Remediation Project

	2011 - 2015 ACS Estimates	Percent	MOE (±)
Population 25+ by Educational Attainment			
Total	2,410	100%	324
Less than 9th Grade	508	21%	165
9th - 12th Grade, No Diploma	385	16%	128
High School Graduate	659	27%	137
Some College, No Degree	531	22%	141
Associate Degree	167	7%	81
Bachelor's Degree or more	326	14%	104
Population Age 5+ Years by Ability to Speak English			
Total	3,343	100%	433
Speak only English	1,309	39%	247
Non-English at Home ¹⁺²⁺³⁺⁴	2,034	61%	364
¹ Speak English "very well"	1,270	38%	278
² Speak English "well"	144	4%	80
³ Speak English "not well"	285	9%	130
⁴ Speak English "not at all"	335	10%	223
³⁺⁴ Speak English "less than well"	620	19%	257
²⁺³⁺⁴ Speak English "less than very well"	764	23%	269
Linguistically Isolated Households*			
Total	138	100%	88
Speak Spanish	131	95%	87
Speak Other Indo-European Languages	7	5%	14
Speak Asian-Pacific Island Languages	0	0%	12
Speak Other Languages	0	0%	11
Households by Household Income			
Household Income Base	1,081	100%	127
< \$15,000	204	19%	81
\$15,000 - \$25,000	183	17%	93
\$25,000 - \$50,000	307	28%	109
\$50,000 - \$75,000	169	16%	65
\$75,000 +	217	20%	95
Occupied Housing Units by Tenure			
Total	1,081	100%	127
Owner Occupied	841	78%	112
Renter Occupied	240	22%	93
Employed Population Age 16+ Years			
Total	2,808	100%	350
In Labor Force	1,640	58%	253
Civilian Unemployed in Labor Force	272	10%	116
Not In Labor Force	1,168	42%	237

Data Note: Detail may not sum to totals due to rounding. Hispanic population can be of any race. N/A means not available. **Source:** U.S. Census Bureau, American Community Survey (ACS) 2011 - 2015.

*Households in which no one 14 and over speaks English "very well" or speaks English only.

Location: User-specified polygonal location

Ring (buffer): 1-mile radius

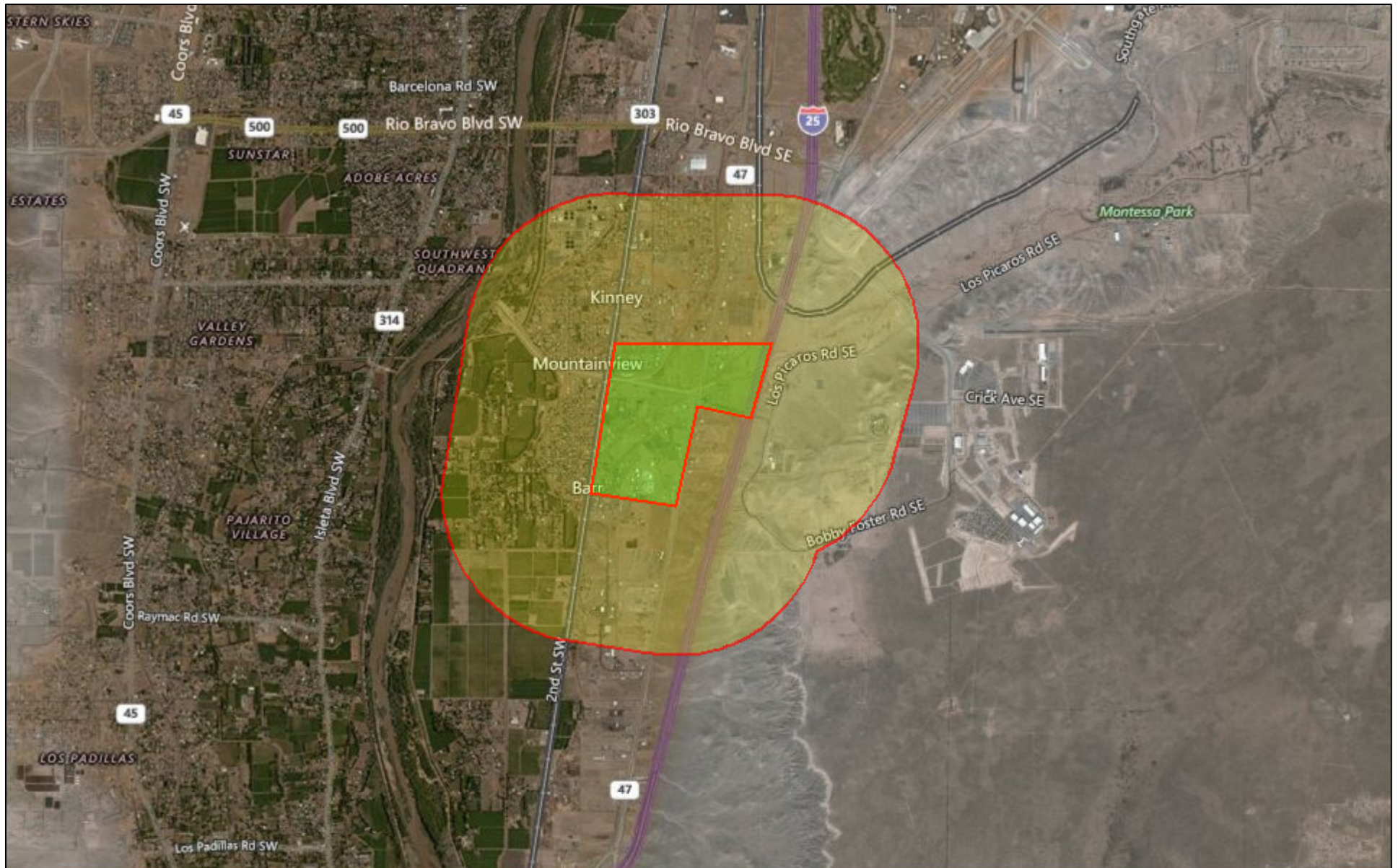
Description: Mountain View Remediation Project

	2011 - 2015 ACS Estimates	Percent	MOE (±)
Population by Language Spoken at Home*			
Total (persons age 5 and above)	3,343	100%	433
English	N/A	N/A	N/A
Spanish	N/A	N/A	N/A
French	N/A	N/A	N/A
French Creole	N/A	N/A	N/A
Italian	N/A	N/A	N/A
Portuguese	N/A	N/A	N/A
German	N/A	N/A	N/A
Yiddish	N/A	N/A	N/A
Other West Germanic	N/A	N/A	N/A
Scandinavian	N/A	N/A	N/A
Greek	N/A	N/A	N/A
Russian	N/A	N/A	N/A
Polish	N/A	N/A	N/A
Serbo-Croatian	N/A	N/A	N/A
Other Slavic	N/A	N/A	N/A
Armenian	N/A	N/A	N/A
Persian	N/A	N/A	N/A
Gujarathi	N/A	N/A	N/A
Hindi	N/A	N/A	N/A
Urdu	N/A	N/A	N/A
Other Indic	N/A	N/A	N/A
Other Indo-European	N/A	N/A	N/A
Chinese	N/A	N/A	N/A
Japanese	N/A	N/A	N/A
Korean	N/A	N/A	N/A
Mon-Khmer, Cambodian	N/A	N/A	N/A
Hmong	N/A	N/A	N/A
Thai	N/A	N/A	N/A
Laotian	N/A	N/A	N/A
Vietnamese	N/A	N/A	N/A
Other Asian	N/A	N/A	N/A
Tagalog	N/A	N/A	N/A
Other Pacific Island	N/A	N/A	N/A
Navajo	N/A	N/A	N/A
Other Native American	N/A	N/A	N/A
Hungarian	N/A	N/A	N/A
Arabic	N/A	N/A	N/A
Hebrew	N/A	N/A	N/A
African	N/A	N/A	N/A
Other and non-specified	N/A	N/A	N/A
Total Non-English	N/A	N/A	N/A

Data Note: Detail may not sum to totals due to rounding. Hispanic population can be of any race. N/A means not available. **Source:** U.S. Census Bureau, American Community Survey (ACS) 2011 - 2015.

*Population by Language Spoken at Home is available at the census tract summary level and up.

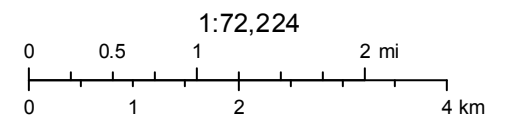
Mountain View Remediation Project



August 22, 2018

 Buffer Area

 Digitized Polygon



© 2018 Microsoft Corporation © 2018 DigitalGlobe ©CNES (2018)
Distribution Airbus DS © 2018 HERE